

RAPID CHANGEOVERS



£595

T75100
5 AXIS CENTRING DOVETAIL VICE

Size: 75mm x 100mm x 56mm
Forward Clamping Range: 0-40mm
Reverse Clamping Range: 38-76mm
Clamping Force: 13.5kn @ 60mm
Material: HT 4140 Steel
Weight: 2.5kg



52

£695

T75150
5 AXIS CENTRING DOVETAIL VICE

Size: 75mm x 150mm x 56mm
Forward Clamping Range: 0-90mm
Reverse Clamping Range: 38-126mm
Clamping Force: 13.5kn @ 60mm
Material: HT 4140 Steel
Weight: 3kg



52

£795

T125150
5 AXIS CENTRING DOVETAIL VICE

Size: 125mm x 150mm x 73.5mm
Forward Clamping Range: 0-82mm
Reverse Clamping Range: 78-150mm
Clamping Force: 20kn @ 100mm
Material: HT 4140 Steel
Weight: 7kg



52
96

£1095

T125250
5 AXIS CENTRING DOVETAIL VICE

Size: 125mm x 250mm x 73.5mm
Forward Clamping Range: 0-180mm
Reverse Clamping Range: 78-254mm
Clamping Force: 20kn @ 100mm
Material: HT 4140 Steel
Weight: 16kg



52
96

£1395

TDV125250
DOUBLE-STATION DOVETAIL VICE

Size: 125mm x 250mm x 73.5mm
Forward Clamping Range: 0-63mm
Reverse Clamping Range: 32-99mm
Clamping Force: 20kn @ 100mm
Material: HT 4140 Steel
Weight: 16kg



52
96

£1295

TDV125155
DOUBLE-STATION DOVETAIL VICE

Size: 125mm x 155mm x 73.5mm
Forward Clamping Range: 0-28.5mm
Reverse Clamping Range: 32-62mm
Clamping Force: 20kn @ 100mm
Material: HT 4140 Steel
Weight: 8kg



52
96

£1195

TDV75150
DOUBLE-STATION DOVETAIL VICE

Size: 75mm x 150mm x 56mm
Forward Clamping Range: 0-37mm
Reverse Clamping Range: 17.5-55mm
Clamping Force: 13.5kn @ 60mm
Material: HT 4140 Steel
Weight: 3kg



52

£995

TDV75100
DOUBLE-STATION DOVETAIL VICE

Size: 75mm x 100mm x 56mm
Forward Clamping Range: 0-10mm
Reverse Clamping Range: 17.5-25mm
Clamping Force: 13.5kn @ 60mm
Material: HT 4140 Steel
Weight: 2.5kg



52

£895

T96-T75100
T75100 VICE + 52 ADAPTOR

Vice Size: 75mm x 100mm x 56mm
Forward Clamping Range: 0-40mm
Reverse Clamping Range: 38-76mm
Clamping Force: 13.5kn @ 60mm
Material: HT 4140 Steel
Weight: 2.5kg



4 x FREE STUDS

96

£695

T52-80-3J
3-JAW CHUCK + 52 ADAPTOR

Chuck Size: 80mm dia.
Base Size: 95mm dia.
Overall Height: 102mm
Material: Hardened Steel
Weight: 2.5kg



4 x FREE STUDS

52

£795

T96-125-3J
3-JAW CHUCK + 96 ADAPTOR

Chuck Size: 125mm dia.
Base Size: 125mm x 125mm
Overall Height: 126mm
Material: Hardened Steel
Weight: 8kg



4 x FREE STUDS

96

£495

T52-ER32
ER32 COLLET FIXTURE + 52 ADAPTOR

Size: 75mm x 75mm x 83mm
Clamping Range: 3-25mm
Material: Steel
Weight: 1.4kg



4 x FREE STUDS

52

£495

T52-ER50
ER50 COLLET FIXTURE + 52 ADAPTOR

Size: 75mm x 75mm x 92mm
Clamping Range: 6-40mm
Material: Steel
Weight: 3kg



4 x FREE STUDS

52

£595

T96-ER32
ER32 COLLET FIXTURE + 96 ADAPTOR

Size: 125mm x 125mm x 104mm
Clamping Range: 3-25mm
Material: Steel
Weight: 2.6kg



4 x FREE STUDS

96

£595

T96-ER40
ER40 COLLET FIXTURE + 96 ADAPTOR

Size: 125mm x 125mm x 111mm
Clamping Range: 3-32mm
Material: Steel
Weight: 3kg



4 x FREE STUDS

96

£1695

T52-160-T3
52MM PITCH 3-SIDED TOMBSTONE

Size: 160mm dia. x 167mm
Mounting (Base): 96mm Pitch
Clamping Force: 18kn
Material: Aluminium
Weight: 7kg



4 x FREE STUDS

52
96

£395

T52-T2132
T2132 DOVETAIL FIXTURE + 52 ADAPTOR

Dovetail F. Size: 21mm x 32mm x 19mm
Base Size: 75mm x 75mm



4 x FREE STUDS

52

£495

T52-T3838
T3838 DOVETAIL FIXTURE + 52 ADAPTOR

Dovetail F. Size: 38mm x 38mm x 27mm
Base Size: 75mm x 75mm



4 x FREE STUDS

52

£595

T52-T5050
T5050 DOVETAIL FIXTURE + 52 ADAPTOR

Dovetail F. Size: 50mm x 50mm x 38mm
Base Size: 75mm x 75mm



4 x FREE STUDS

52

£495

T96-T2132
T2132 DOVETAIL FIXTURE + 96 ADAPTOR

Dovetail F. Size: 21mm x 32mm x 19mm
Base Size: 126mm x 126mm



4 x FREE STUDS

96

£595

T96-T3838
T3838 DOVETAIL FIXTURE + 96 ADAPTOR

Dovetail F. Size: 38mm x 38mm x 27mm
Base Size: 126mm x 126mm



4 x FREE STUDS

96

£695

T96-T5050
T5050 DOVETAIL FIXTURE + 96 ADAPTOR

Dovetail F. Size: 50mm x 50mm x 38mm
Base Size: 126mm x 126mm



4 x FREE STUDS

96

£995

T75-126126-T4
96MM PITCH 4-SIDED TOMBSTONE

Size: 126mm x 126mm x 200mm
Mounting (Base): 96mm Pitch
Clamping Force: 18kn
Material: Aluminium
Weight: 7kg



4 x FREE STUDS

96

£1495

T96-155155-T4
4-SIDED TOMBSTONE FOR T125150 VICES

Size: 155mm x 155mm x 200mm
Compatibility: 4 x T125150 / V562X vices
Material: Aluminium



4 x FREE STUDS

96

£695

T52-106106-80
52 ZERO-POINT BASE

Size: 106mm x 106mm x 25mm
Mounting: 2 x M10 @ 180° on 80mm PCD
Clamping Force: 18kn
Repeatability: 5µm
Material: Steel
Weight: 2kg



4 x FREE STUDS

52

£695

T52-106106-82
52 ZERO-POINT BASE

Size: 106mm x 106mm x 25mm
Mounting: 4 x M10 @ 90° on 82mm PCD
Clamping Force: 18kn
Repeatability: 5µm
Material: Steel
Weight: 2kg



4 x FREE STUDS

52

£695

T52-106106-82
52 ZERO-POINT BASE

Size: 106mm x 106mm x 25mm
Mounting: 4 x M10 @ 90° on 82mm PCD
Clamping Force: 18kn
Repeatability: 5µm
Material: Steel
Weight: 2kg



4 x FREE STUDS

52

£795

T52-T96
52 ZERO-POINT ADAPTOR BASE

Size: 121mm x 121mm x 25mm
Mounting: 96mm pitch
Clamping Force: 18kn
Repeatability: 5µm
Material: Steel
Weight: 2.5kg



4 x FREE STUDS

52

£795

T96-150150-66
96 ZERO-POINT BASE

Size: 150mm x 150mm x 30mm
Mounting: 4 x M10 @ 90° on 66mm PCD,
2 x M12 @ 180° on 120mm PCD
Clamping Force: 22kn
Repeatability: 5µm
Material: Steel
Weight: 4kg



4 x FREE STUDS

96

£795

T96-150128
96 ZERO-POINT BASE

Size: 150mm x 128mm x 30mm
Mounting: 4 x M10 @ 90° on 66mm PCD,
2 x M10 @ 180° on 100mm PCD
Clamping Force: 22kn
Repeatability: 5µm
Material: Steel
Weight: 4kg



4 x FREE STUDS

96

£795

T96-168150
96 ZERO-POINT BASE

Size: 168mm x 150mm x 30mm
Mounting: 4 x M10 @ 60° on 159mm PCD
Clamping Force: 22kn
Repeatability: 5µm
Material: Steel
Weight: 4kg



4 x FREE STUDS

96

£795

T96-150150-126
96 ZERO-POINT BASE

Size: 150mm x 150mm x 30mm
Mounting: 4 x M10 @ 90° on 126mm PCD
Clamping Force: 22kn
Repeatability: 5µm
Material: Steel
Weight: 4kg



4 x FREE STUDS

96

£995

T5295-150150-126
52 + 96 ZERO-POINT BASE

Size: 150mm x 150mm x 30mm
Mounting: 4 x M10 @ 90° on 126mm PCD,
2 x M12 @ 180° on 120mm PCD
Clamping Force: 22kn
Repeatability: 5µm
Material: Steel
Weight: 4kg



8 x FREE STUDS

52
96

£1495

T52-208106-D
52 DOUBLE ZERO-POINT BASE

Size: 208mm x 106mm x 25mm
Mounting: 4 x M10 @ 82mm x 208mm
Clamping Force: 18kn
Repeatability: 5µm
Material: Steel
Weight: 4kg



8 x FREE STUDS

52

£1795

T96-350168-D
96 DOUBLE ZERO-POINT BASE

Size: 350mm x 168mm x 30mm
Mounting: 4 x M10 @ 132.50mm x 320mm,
plus others
Clamping Force: 22kn
Repeatability: 5µm
Material: Steel
Weight: 12kg



8 x FREE STUDS

96

£1895

T96-350230-D
96 DOUBLE ZERO-POINT BASE

Size: 350mm x 230mm x 30mm
Mounting: 4 x M10 @ 200mm x 300mm,
plus others
Clamping Force: 22kn
Repeatability: 5µm
Material: Steel
Weight: 22kg



8 x FREE STUDS

96

£1295

T96-275100-R
96 RISER ZERO-POINT BASE

Size: 275mm dia. x 100mm
Mounting: Various options
Clamping Force: 22kn
Repeatability: 5µm
Material: Steel + Aluminium
Weight: 20kg



4 x FREE STUDS

96

£995

T96-150130-R
96 RISER ZERO-POINT BASE

Size: 150mm x 130mm x 80mm
Mounting: 96mm pitch
Clamping Force: 22kn
Repeatability: 5µm
Material: Steel
Weight: 8.5kg



4 x FREE STUDS

96

£3495

T96-395-P
96 PYRAMID ZERO-POINT BASE

Size: 395mm dia. x 115mm
Mounting: Various options
Clamping Force: 22kn
Repeatability: 5µm
Material: Steel + Aluminium
Weight: 35kg



12 x FREE STUDS

96

£1195

T96-90DEG
96 ANGLE ZERO-POINT BASE

Size: 150mm x 149mm x 199mm
Mounting: 96mm pitch
Clamping Force: 22kn
Repeatability: 5µm
Material: Steel
Weight: 5.5kg



4 x FREE STUDS

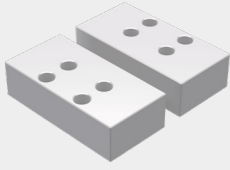
96

£65

T125-ASJ

125 ALUMINIUM SOFT JAWS

Size: 125mm
Material: Aluminium
Compatibility: T125150 / T125250
V562X / V510X vices

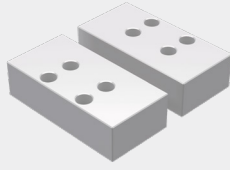


£85

T125-SSJ

125 STEEL SOFT JAWS

Size: 125mm
Material: Steel
Compatibility: T125150 / T125250
V562X / V510X vices

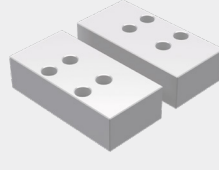


£45

T75-ASJ

75 ALUMINIUM SOFT JAWS

Size: 75mm
Material: Aluminium
Compatibility: T75100 / T75150
V75100X / V75150X vices

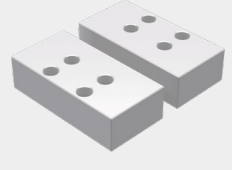


£65

T75-SSJ

75 STEEL SOFT JAWS

Size: 75mm
Material: Steel
Compatibility: T75100 / T75150
V75100X / V75150X vices



£85

T75-HJ

75 SERRATED 45° DOVETAIL JAW

Size: 75mm
Material: Steel
Compatibility: T75100 / T75150
V75100X / V75150X vices



£95

T125-HJ

125 SERRATED 45° DOVETAIL JAW

Size: 125mm
Material: Steel
Compatibility: T125150 / T125250
V562X / V510X vices

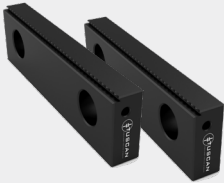


£145

TJ6

150 SERRATED 45° DOVETAIL JAWS

Size: 150mm
Material: Steel
Compatibility: SSV150X



£15

PS16F

52 LOCATION STUD

Compatibility: 52mm System



£15

PS20F

96 LOCATION STUD

Compatibility: 96mm System



£POA

T52-115115-PN

52 PNEUMATIC ZERO-POINT BASE

Size: 115mm x 115mm x 46mm
Mounting: 4 x M10 @ 90° on 89mm PCD
Clamping Force: 18kn
Repeatability: 5µm
Material: Steel
Weight: 4kg



4 x FREE STUDS

52

£POA

T96-153153-PN

96 PNEUMATIC ZERO-POINT BASE

Size: 153mm x 153mm x 50mm
Mounting: 4 x M10 @ 90° on 128mm PCD
Clamping Force: 22kn
Repeatability: 5µm
Material: Steel
Weight: 7kg



4 x FREE STUDS

96




The building blocks
of faster fixturing

£195

DC-45DEG

3 FLUTE 45° DOVETAIL CUTTER

Shank Size: 20mm
Cutting Angle: 45°



3 x FREE INSERTS

£20

DC-45DEG-I

DOVETAIL INSERT

Compatibility: DC-45DEG



£195

TW.20-100

TORQUE WRENCH

Compatibility: Tuscan vices + ZP Bases
Range: 20Nm-100Nm

