





INCREASE EFFICIENCY

OVER 40 YEARS INDUSTRY EXPERIENCE

Founded to supply demand.

Meticulously selected by our own time served engineers in our technical division, our Tuscan products are of exceptional quality, designed to withstand the pressure and force of the modern day CNC machine shop. We are extremely proud of our progressive product range, which features our precision spindle tooling range, where all tool holders are balanced to 25,000RPM @ G2.5 as standard.

Our Tuscan range also features modular vices, which have matched bed heights and anti-lift mechanisms to ensure workpieces are held with optimum security and repeatability. Each and every product has been chosen to guarantee the highest precision, accuracy and repeatability down to microns. We are constantly updating and developing our range so we keep up to date with the latest machining applications.

TUSCAN HOUSE

SPINDLE TOOLING

BRAND NEW SELECTION OF TOOLHOLDERS



ER COLLET CHUCKS

**HIGH-PRECISION,
LOW PRICES**

Balanced to 25,000rpm @ G2.5

The ER collet system has several advantages when using in today's CNC milling machines. The most significant advantage is flexibility to hold any type of round shank tool.

An ER collet can be used in drilling, reaming, and tapping as well as milling applications just by exchanging the collet. Its accuracy also provides greater tool life than older style collet systems like TG or DA.

SHELL MILL ARBORS

**HIGH-PERFORMANCE,
LOW PRICES**

Balanced to 25,000rpm @ G2.5

Shell Mill and Face Mill Holders are conventional arbors capable of holding cutters designed under a variety of international specifications.

Available in numerous gauge lengths, our Tuscan range of Shell Mill holders have been manufactured to withstand heavy duty applications in a CNC machine shop environment.

SHRINK FIT CHUCKS

**TOP QUALITY,
LOW PRICES**

Balanced to 25,000rpm @ G2.5

Shrink technology uses the expansion and contraction properties of metal to provide extremely powerful and accurate tool holding.

With a slender nose construction, shrink toolholding is the perfect advocate for complex machining on 5-Axis machine tools.



PRECISION TOOLHOLDERS

APPLICATIONS	ER TOOLHOLDER	FACE MILL	SHRINK FIT
Light Milling	✓	✓	✓
Medium Milling	✓	✓	✓
Heavy Milling		✓	✓
Drilling	✓		✓
Reaming			✓

SPECIFICATIONS

	ER TOOLHOLDER	FACE MILL	SHRINK FIT
Run-out accuracy (mm)	≤ 0.005mm at bore	≤ 0.005mm at Spigot Dia	≤ 0.003mm at bore
Balancing Grade	G2.5 at 25,000 rpm #	G2.5 at 25,000 rpm #	G2.5 at 25,000 rpm #
Tool change	Spanner	Allen Key	Heat Shrink Machine

BENEFITS

Universal Application	High Rigidity	Good Clamping Force
Economical Price	Double acting Screw	Best Accessibility
	Side & Face Cutter	Better Tool life

ER COLLET CHUCKS

**HIGH-PRECISION,
LOW-PRICES**

Balanced to 25,000rpm @ G2.5

Our new range of precision **TUSCAN ER Collet Chucks** provide outstanding performance at exceptionally low prices. Our collet chucks are balanced to 25,000RPM @ G2.5 as standard, thereby providing you with optimum performance, longevity and accuracy.

ER Collet Chucks

High Quality Tool Holders

ER16 ER20 ER25 ER32

From
£29.00
+ vat

BENEFITS

of using Top-Quality ER Chucks

- + Improved tool life
- + Greater surface finish
- + Save money!



Mini ER Nut Collet Chucks

High Quality Tool Holders

ER11 ER16

From
£49.00
+ vat



BT MAS 403					
Taper	Part No.	Nose Dia	Gauge Length mm	RRP	OUR PRICE
BT30	BT30 ER16 070	32mm	70mm	49.00	39.00
	BT30 ER16 100	32mm	100mm	54.00	39.00
	BT30 ER20 060	35mm	60mm	49.00	39.00
	BT30 ER20 100	35mm	100mm	54.00	39.00
	BT30 ER25 070	42mm	70mm	49.00	39.00
	BT30 ER25 100	42mm	100mm	54.00	39.00
	BT30 ER32 060	50mm	60mm	49.00	39.00
	BT30 ER32 100	50mm	100mm	54.00	39.00
BT40	BT40 ER16 070	32mm	70mm	39.00	29.00
	BT40 ER16 100	32mm	100mm	59.00	44.00
	BT40 ER16 160	32mm	160mm	89.00	64.00
	BT40 ER20 070	35mm	70mm	54.00	39.00
	BT40 ER20 100	35mm	100mm	64.00	49.00
	BT40 ER20 160	35mm	160mm	89.00	64.00
	BT40 ER25 070	42mm	70mm	54.00	39.00
	BT40 ER25 100	42mm	100mm	74.00	54.00
BT50	BT40 ER25 160	42mm	160mm	89.00	64.00
	BT40 ER32 070	50mm	70mm	39.00	29.00
	BT40 ER32 100	50mm	100mm	54.00	39.00
	BT40 ER32 160	50mm	160mm	89.00	64.00
	BT50 ER16 080	32mm	80mm	99.00	74.00
	BT50 ER16 100	32mm	100mm	104.00	74.00
	BT50 ER16 160	32mm	160mm	114.00	84.00
	BT50 ER20 070	35mm	70mm	94.00	69.00
BT50	BT50 ER20 100	35mm	100mm	94.00	69.00
	BT50 ER20 160	35mm	160mm	104.00	74.00
	BT50 ER25 080	42mm	80mm	94.00	69.00
	BT50 ER25 100	42mm	100mm	104.00	74.00
	BT50 ER25 160	42mm	160mm	114.00	84.00
	BT50 ER32 080	50mm	80mm	94.00	69.00
BT50 ER32 100	50mm	100mm	104.00	74.00	
BT50 ER32 160	50mm	160mm	114.00	84.00	

DIN 69871/SK FORM					
Taper	Part No.	Nose Dia	Gauge Length	RRP	OUR PRICE
SK40	SK40 ER16 070	32mm	70mm	39.00	29.00
	SK40 ER16 100	32mm	100mm	59.00	44.00
	SK40 ER16 160	32mm	160mm	99.00	74.00
	SK40 ER20 070	35mm	70mm	54.00	39.00
	SK40 ER20 100	35mm	100mm	59.00	44.00
	SK40 ER20 160	35mm	160mm	99.00	74.00
	SK40 ER25 070	42mm	70mm	54.00	39.00
	SK40 ER25 100	42mm	100mm	69.00	49.00
	SK40 ER25 160	42mm	160mm	99.00	74.00
	SK40 ER32 070	50mm	70mm	39.00	29.00
	SK40 ER32 100	50mm	100mm	69.00	49.00
	SK40 ER32 160	50mm	160mm	104.00	74.00

DIN 69893/HSK FORM A					
Taper	Part No.	Nose Dia	Gauge Length	RRP	OUR PRICE
HSK	HSK63A ER16 070	32mm	70mm	104.00	74.00
	HSK63A ER16 100	32mm	100mm	104.00	84.00
	HSK63A ER16 160	32mm	160mm	139.00	99.00
	HSK63A ER20 070	35mm	70mm	99.00	74.00
	HSK63A ER20 100	35mm	100mm	104.00	84.00
	HSK63A ER20 160	35mm	160mm	139.00	99.00
	HSK63A ER25 070	42mm	70mm	104.00	74.00
	HSK63A ER25 100	42mm	100mm	104.00	84.00
	HSK63A ER25 160	42mm	160mm	139.00	99.00
	HSK63A ER32 075	50mm	75mm	99.00	74.00
	HSK63A ER32 100	50mm	100mm	104.00	84.00
	HSK63A ER32 160	50mm	160mm	139.00	99.00

BT MAS 403					
Taper	Part No.	Nose Dia	Gauge Length	RRP	OUR PRICE
BT30	BT30 ER11M 100	16mm	100mm	69.00	49.00
	BT30 ER16M 100	22mm	100mm	69.00	49.00
	BT40 ER11M 070	16mm	70mm	104.00	74.00
BT40	BT40 ER11M 100	16mm	100mm	124.00	89.00
	BT40 ER11M 160	16mm	160mm	144.00	104.00
	BT40 ER16M 070	22mm	70mm	69.00	49.00
	BT40 ER16M 100	22mm	100mm	54.00	49.00
BT40 ER16M 160	22mm	160mm	129.00	94.00	

DIN 69871/SK FORM					
Taper	Part No.	Nose Dia	Gauge Length	RRP	OUR PRICE
SK40	SK40 ER11M 050	16mm	50mm	99.00	74.00
	SK40 ER11M 100	16mm	100mm	124.00	89.00
	SK40 ER11M 160	16mm	160mm	144.00	104.00
	SK40 ER16M 070	32mm	70mm	89.00	64.00
SK40 ER16M 100	32mm	100mm	114.00	84.00	
SK40 ER16M 160	32mm	160mm	—	74.00	

DIN 69893/HSK FORM A					
Taper	Part No.	Nose Dia	Gauge Length	RRP	OUR PRICE
HSK	HSK63A ER11M 070	16mm	70mm	139.00	99.00
	HSK63A ER11M 100	16mm	100mm	139.00	99.00
	HSK63A ER11M 160	16mm	160mm	184.00	129.00
	HSK63A ER16M 070	22mm	70mm	139.00	99.00
	HSK63A ER16M 100	22mm	100mm	139.00	109.00
	HSK63A ER16M 160	22mm	160mm	184.00	129.00

ER COLLETS AVAILABLE ON REQUEST



SHELL MILL ARBORS

**HIGH-PERFORMANCE,
LOW-PRICES**

Balanced to 25,000rpm @ G2.5

Our new range of precision **TUSCAN Shell Mill Arbors** provide outstanding performance at exceptionally low prices. Our holders are capable of holding cutters designed under a variety of international specifications.

Shell Mill
Arbors
High Quality Toolholders

SM16 SM22 SM27 SM32

From
£44.00
+ vat



BENEFITS
of using High-Performance Shell Mill Chucks
+ Improved tool life
+ Greater surface finish
+ Save money!



BT MAS 403					
Taper	Part No.	Spigot Dia	Gauge Length	RRP	OUR PRICE
BT30	BT30 SM16 035	16mm	35mm	64.00	49.00
	BT30 SM22 040	22mm	40mm	64.00	49.00
	BT30 SM27 040	27mm	40mm	64.00	49.00
BT40	BT40 SM16 045	16mm	45mm	59.00	44.00
	BT40 SM16 100	16mm	100mm	59.00	49.00
	BT40 SM16 160	16mm	160mm	69.00	54.00
	BT40 SM22 045	22mm	45mm	59.00	44.00
	BT40 SM22 100	22mm	100mm	59.00	49.00
	BT40 SM22 160	22mm	160mm	69.00	54.00
	BT40 SM27 045	27mm	45mm	59.00	44.00
	BT40 SM27 100	27mm	100mm	64.00	49.00
	BT40 SM27 160	27mm	160mm	74.00	54.00
	BT40 SM32 050	32mm	50mm	59.00	44.00
BT50	BT40 SM32 100	32mm	100mm	74.00	54.00
	BT40 SM32 160	32mm	160mm	84.00	59.00
	BT50 SM16 100	16mm	100mm	94.00	69.00
	BT50 SM22 100	22mm	100mm	94.00	69.00
	BT50 SM27 100	27mm	100mm	94.00	69.00

DIN 69871/SK FORM					
Taper	Part No.	Spigot Dia	Gauge Length	RRP	OUR PRICE
SK40	SK40 SM16 045	16mm	45mm	59.00	44.00
	SK40 SM16 100	16mm	100mm	64.00	49.00
	SK40 SM16 160	16mm	160mm	74.00	54.00
	SK40 SM22 045	22mm	45mm	59.00	44.00
	SK40 SM22 100	22mm	100mm	64.00	49.00
	SK40 SM22 160	22mm	160mm	79.00	59.00
	SK40 SM27 050	27mm	50mm	59.00	44.00
	SK40 SM27 100	27mm	100mm	64.00	49.00
	SK40 SM27 160	27mm	160mm	79.00	59.00
	SK40 SM32 055	32mm	55mm	59.00	44.00
SK40	SK40 SM32 100	32mm	100mm	74.00	54.00
	SK40 SM32 160	32mm	160mm	84.00	59.00

DIN 69893/HSK FORM A					
Taper	Part No.	Spigot Dia	Gauge Length	RRP	OUR PRICE
HSK	HSK63A SM16 045	16mm	45mm	124.00	89.00
	HSK63A SM16 100	16mm	100mm	149.00	109.00
	HSK63A SM16 160	16mm	160mm	174.00	124.00
	HSK63A SM22 050	22mm	50mm	124.00	89.00
	HSK63A SM22 100	22mm	100mm	149.00	109.00
	HSK63A SM22 160	22mm	160mm	174.00	124.00
	HSK63A SM27 055	27mm	55mm	124.00	89.00
	HSK63A SM27 100	27mm	100mm	149.00	109.00
	HSK63A SM27 160	27mm	160mm	184.00	129.00
	HSK63A SM32 060	32mm	60mm	139.00	99.00
HSK	HSK63A SM32 100	32mm	100mm	164.00	119.00
	HSK63A SM32 160	32mm	160mm	189.00	134.00

**SHELL MILLS &
INSERTS AVAILABLE
ON REQUEST**

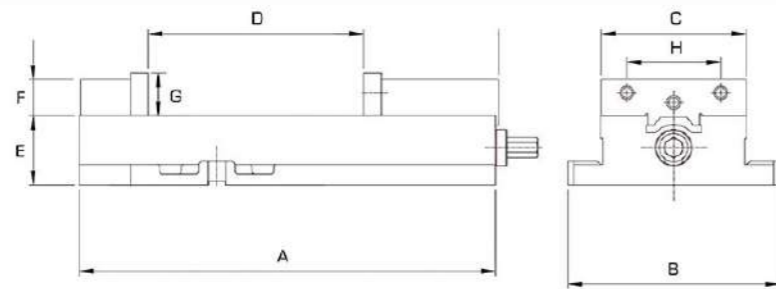
MACHINE VICES



SSV SERIES - SINGLE STATION PRECISION MACHINE VICES

High quality and always improving on industry standards, the Tuscan range of single station machine vices are designed to withstand the pressure and force of CNC machining. With a built in anti-lift mechanism the vice ensures accurate and repeatable machining down to microns.

- + Matched bed heights for multiple vice use
- + Manufactured from FCD-60 ductile iron
- + Machined key ways and alignment rail for quick set ups



From
£369.00
+ vat

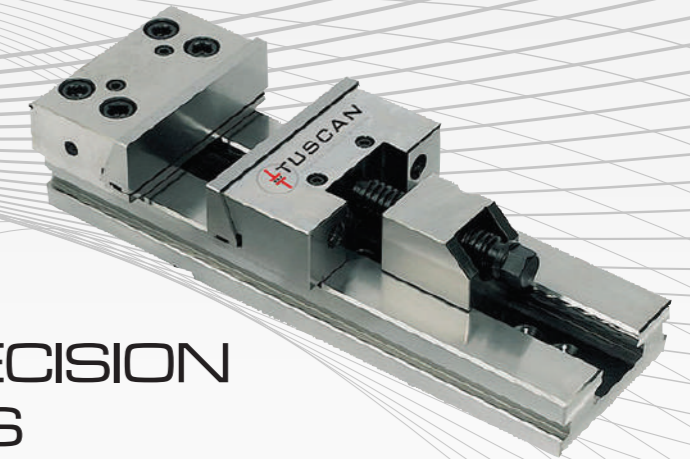
PART NO.	A mm	B mm	C mm	D mm	E mm	F mm	G mm	H mm	Weight kg	OUR PRICE
SSV-100	321	160	106	153	57.15	28.5	35	63.5	14	369.00
SSV-150X	427	186	151	232	73.025	38	44.5	98.4	31	449.00
SSV-200	555	295	206	265	84.074	50	56	120	68	769.00

From
£80.00
+ vat

JAW SETS



PART NO.	Type	Width mm	Height mm	OUR PRICE
SSV100-HJ	Hard Jaw Set	100	35	80.00
SSV100-HSJ	Hard Serrated Jaw Set	100	35	136.00
SSV100-HSTJ	Hard Stepped Jaw Set 4mm x 3.5mm step	100	35	96.00
SSV100-HVJ	Hard Vee Jaw	100	35	96.00
SSV100-SAJ	Aluminium Soft Jaw Set	100	35	80.00
SSV100-SSJ	Soft Steel Jaw Set	100	35	80.00
SSV150-HJ	Hard Jaw Set	150	44.5	96.00
SSV150-HSJ	Hard Serrated Jaw Set	150	44.5	149.00
SSV150-HSTJ	Hard Stepped Jaw Set 3mm x 3mm step	150	44.5	149.00
SSV150-HVJ	Hard Vee Jaw	150	44.5	146.00
SSV150-SAJ	Aluminium Soft Jaw Set	150	44.5	96.00
SSV150-SSJ	Soft Steel Jaw Set	150	44.5	96.00
SSV200-HJ	Hard Jaw Set	200	56	149.00
SSV200-HSJ	Hard Serrated Jaw Set	200	56	175.00
SSV200-HSTJ	Hard Stepped Jaw Set	200	56	175.00
SSV200-HVJ	Hard Vee Jaw	200	56	149.00
SSV200-SAJ	Aluminium Soft Jaw Set	200	56	114.00
SSV200-SSJ	Soft Steel Jaw set	200	56	114.00

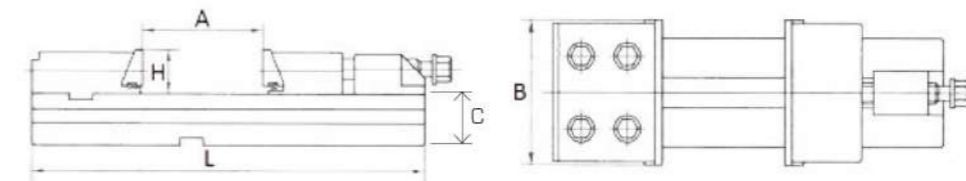


MV SERIES - PRECISION MODULAR VICES

Designed for precision grinding and milling the Tuscan MV range of vices are widely used with CNC and standard milling machines.

The moveable jaw is self adjusting and is made of high grade alloy steel, stabilised and hardened to ensure quality and durability.

- + Parallelism of bed of vice to base: **0.02/100mm**
- + Parallelism of fixed jaws to bolt slots: **0.02/100mm**
- + Perpendicular accuracy of fixed jaws to bed of vice: **0.03/100mm**
- + All MV series vices come complete with a standard accessory pack



From
£339.00
+ vat

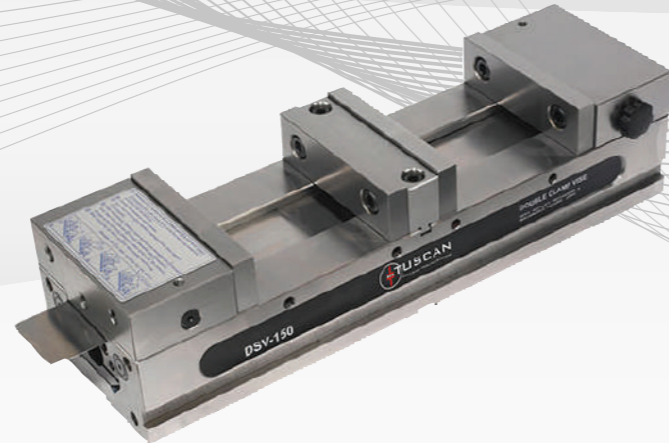
PART NO.	A mm	B mm	C mm	H mm	L mm	Clamping Force	Weight kg	OUR PRICE
MV100	100	100	35	30	270	3000	7	339.00
MV125	150	125	40	40	345	3000	13	379.00
MV150	200	150	50	50	420	5000	26	449.00
MV150B	300	150	50	50	520	5000	30	589.00
MV200	200	200	70	65	495	10000	57	799.00
MV200B	300	200	70	65	595	10000	65	899.00

From
£64.00
+ vat

JAW SETS



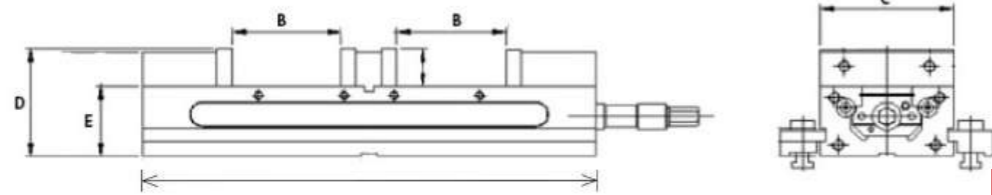
PART NO.	Type	Width mm	Height mm	OUR PRICE
MV100-HJ	Hard Jaw Set	100	30	70.00
MV100-SJ	Steel Soft Jaw Set	100	30	64.00
MV125-HJ	Hard Jaw Set	125	40	75.00
MV125-SJ	Steel Soft Jaw Set	125	40	67.00
MV150-HJ	Hard Jaw Set	150	50	90.00
MV150-SJ	Steel Soft Jaw Set	150	50	70.00
MV200-HJ	Hard Jaw Set	200	65	122.00
MV200-SJ	Steel Soft Jaw Set	200	65	112.00



DSV SERIES - DOUBLE STATION MACHINE VICES

Designed with the combination of fixed and moveable jaws the Tuscan DSV series vice has the ability to hold multiple workpieces with the same clamping force. Hardened and ground, the DSV series ensures high accuracy and rigidity.

- + Capable of clamping different size components in each station
- + Clamping force equalisation
- + Manufactured from FCD-60 ductile iron
- + Repeatability $\pm 0.015\text{mm}$
- + Supplied with 18mm locating tenons



From
£899.00
+ vat

PART NO.	A mm	B mm	C mm	D mm	E mm	F mm	Jaw Height mm	Weight kg	Length mm	OUR PRICE
DSV-100	405	90	103	101.5	63.5	459	38	20	430	899.00
DSV-150	520	125	152	126	82.55	536	44.5	47	639	999.00

From
£135.00
+ vat

JAW SETS



PART NO.	Type	Width mm	Height mm	OUR PRICE
DSV100-HJ-S	Hard Jaw Set (4pc)	100	38	135.00
DSV100-ASJ-S	Aluminium Soft Jaw Set (3pc)	100	38	235.00
DSV100-SSJ-S	Steel Soft Jaw Set (3pc)	100	38	196.00
DSV150-HJ-S	Hard Jaw Set (4 pc)	150	44.5	195.00
DSV150-ASJ-S	Aluminium Soft Jaw Set (3pc)	150	44.5	315.00
DSV150-SSJ-S	Steel Soft Jaw Set (3pc)	150	44.5	225.00



MACHINE VICE ACCESSORIES

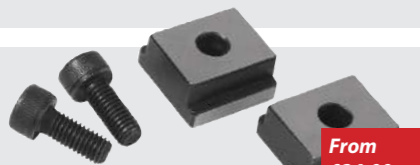


Swivel Bases

For ease of vice orientation

From
£151.00
+ vat

PART NO	TO SUIT	OUR PRICE
SSV100-SB	SSV-100 VICE	151.00
SSV150-SB	SSV-150 VICE	151.00
SSV200-SB	SSV-200 VICE	151.00
MV100-SB	MV-100 VICE	151.00
MV125-SB	MV-125 VICE	151.00
MV150-SB	MV-150 VICE	151.00
MV200-SB	MV-200 VICE	250.00



Tenons

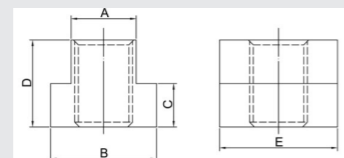
Tenons are secured to the underside of your vice, to allow for quicker set up times and to locate your vice accurately onto your machine tool table

From
£24.00
+ vat

PART NO & SIZE	OUR PRICE
SSV100-TEN-14mm	24.00
SSV100-TEN-18mm	24.00
SSV150-TEN-14mm	32.00
SSV150-TEN-16mm	32.00
SSV150-TEN-18mm	32.00
SSV200-TEN-18mm	40.00
SSV200-TEN-22mm	40.00

T Nuts

T nuts are used by sliding them into the T slots of a milling machine table, to help hold your workholding device in place.



ONLY
£6.00
+ vat

PART NO.	A	B	C	D	E	F	OUR PRICE
PT06-1210	11.8	18	7	14	22	M10	6.00
PT06-1410	13.8	22	8	16	28	M10	6.00
PT06-1412	13.8	22	8	16	28	M12	6.00
PT06-1612	15.8	25	8	16	28	M12	6.00
PT06-1812	17.7	28	10.5	20	30	M12	6.00
PT06-1816	17.7	28	10.5	20	30	M16	6.00



Adjustable Workstops

+ Adjustable workstop assembly to suit the SSV series of single station machine vices

From
£84.00
+ vat

PART NO	TO SUIT	OUR PRICE
SSV100-WS	SSV-100 VICE	84.00
SSV150-WS	SSV-150 VICE	92.00
SSV200-WS	SSV-200 VICE	124.00

Small workstop Assembly

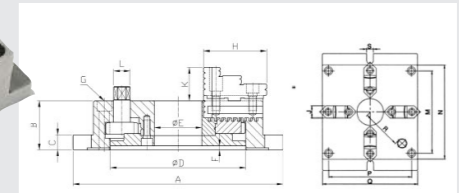
PART NO	TO SUIT	OUR PRICE
WSRL46	SSV-150	29.00



MACHINE CHUCKS

4 Jaw Machine Chucks

- + Low profile vice body to accommodate larger work pieces
- + Adjusting handle is set on the front for multiple chuck usage

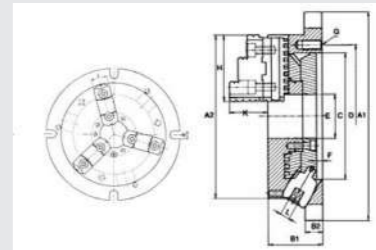


From
£449.00
+ vat

PART NO.	A	B	C	D	E	F	G	H	J	K	L	M	N	P	Q	Weight kg	O.D. Clamping	I.D. Clamping	OUR PRICE
MC-06	215	57	18	130	40	5.5	4-M10x1.5P	68	26	39	14	144	165	144	165	11.4	04-128	055-128	425.00
MC-08	250	65	20	160	55	6	4-M12x1.75P	82	28	43	17	174	200	174	200	18.6	05-162	062-162	549.00
MC-10	310	72	22	200	70	6	4-M14x2P	93	32	50	21	218	250	218	250	31.6	06-200	072-200	699.00
MC-12	380	85	25	260	100	7	4-M16x2P	118	40	56	23	274	310	274	310	56.6	010-265	090-265	825.00

3 Jaw Superthin Chucks

- + Flange design for efficient loading and unloading
- + Superthin design
- + 30° angle between the base and handle for convenient adjustment



From
£769.00
+ vat

PART NO.	A1	A2	B1	B2	C	D	E	F	G	H	J	K	L	M	Weight kg	O.D. Clamping	I.D. Clamping	OUR PRICE
NBK-06	220	170	58	18	130	147	45	6	3-M10	68	26	40	10	13	10.6	08-160	048-150	769.00
NBK-08	270	210	65	20	155	172	60	6	3-M10	82	28	43	11	13	18.1	011-200	062-190	899.00
NBK-10	315	255	73	20	190	210	80	6	3-M12	93	32	52	12	16	27.9	012-250	072-240	1249.00
NBK-12	370		80	22	250	285	105	5	3-M12	118	40	59	14	18	42.9	015-300	086-290	1699.00



TOOLING ACCESSORIES



Clamp Kits

- Tenon: 5/8" - Studding: 1/2" - 52 piece
- Tenon: 14mm - Studding: M12 - 52 piece
- Tenon: 16mm - Studding: M14 - 52 piece
- Tenon: 18mm - Studding: M16 - 52 piece
- Tenon: 22mm - Studding: M20 - 52 piece

From
£94.00
+ vat

PART NO	Model	Studding	OUR PRICE
CK104B	Tenon 5/8"	Studding 1/2"	109.00
CK12A	14mm	Studding: M12	94.00
CK14	16mm	Studding: M14	104.00
CK16	18mm	Studding: M16	114.00
CK20	22mm	Studding: M20	239.00



Drill Grinding Machines

- + Double Bearings for reduced wear
- + CBN Diamond Wheel
- + Adjustable Trimming Angle
- + ER40 Collet Set 12-26mm (15pcs) included

From
£549.00
+ vat

PART NO	Size ER Collet set included	OUR PRICE
DM-213	ER20 Collet Set 2-13mm	549.00
DM-1226	ER40 Collet Set 12-26mm	1260.00
GH-413	ER20 Collet Set 4-13mm	1495.00

Through Coolant Swarf Fan



a.



b.

From
£55.00
+ vat

PART NO	Description	OUR PRICE
TSF-250C	a. Swarf Fan	119.00
TSF-250-BRK	b. Replacement Blade Kit for TSF-250 C	55.00



TOOLING STORAGE

TOOLING TROLLEYS, BENCH TOP STANDS & TOOL RACKS FROM £54 + VAT



ISO30 Tooling Trolley

High quality, rigid design, suitable for BT30 and SK30 tooling, 32 stations, 2 drawers, overall size: 1002 x 650 x 810mm, weight: 64 kg

ISO40 Tooling Trolley

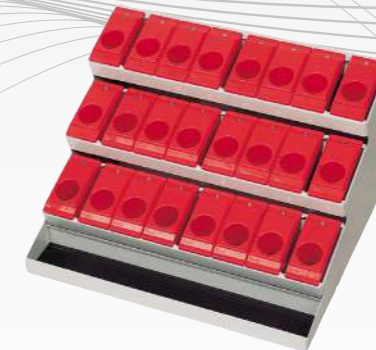
High quality, rigid design, suitable for BT40 and SK40 tooling, 28 stations, 2 drawers, overall size: 1002 x 650 x 810mm, weight: 64 kg

ISO50 Tooling Trolley

High quality, rigid design, suitable for BT50 and SK50 tooling, 20 stations, 2 drawers, overall size: 1002 x 650 x 810mm, weight: 64 kg

HSK63A Tooling Trolley

High quality, rigid design, suitable for HSK63A tooling, 24 stations, 2 drawers, overall size: 1002 x 650 x 810mm, weight: 64 kg



ISO30 Tooling Rack Stand

Compatible design, suitable for BT30 and SK30 tooling, 24 stations, overall size: 550 x 430 x 360mm, weight: 11.5 kg

ISO40 Tooling Rack Stand

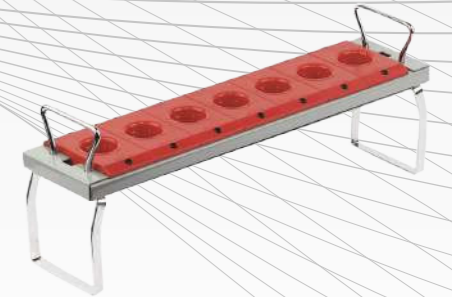
Compatible design, portable, suitable for BT40 and SK40 tooling, 21 stations, overall size: 550 x 430 x 360mm, weight: 11.5 kg

ISO50 Tooling Rack Stand

Compatible design, portable, suitable for BT50 and SK50 tooling, 15 stations, overall size: 550 x 430 x 360mm, weight: 11.5 kg

HSK63A Tooling Rack Stand

Compatible design, portable, suitable for HSK63A tooling 18 stations, overall size: 550 x 430 x 360mm, weight: 11.5 kg



ISO30 Toolholder Rack

Compatible design, suitable for BT30 and SK30 tooling, 8 stations.

ISO40 Toolholder Rack

Compatible design, portable, suitable for BT40 and SK40 tooling, 7 stations.

ISO50 Toolholder Rack

Compatible design, portable, suitable for BT50 and SK50 tooling, 5 stations.

HSK63A Toolholder Rack

Compatible design, portable, suitable for HSK63A tooling 6 stations.

From
£54.00
+ vat

PART NO	Stations	Size mm	OUR PRICE	PART NO	Stations	Size mm	OUR PRICE	PART NO	Stations	OUR PRICE
VTT-5-30	32	1002 x 650 x 850	439.00	VTT-31-30	24	550 x 430 x 360	219.00	VTTR-30TR	8	54.00
VTT-5-40	28	1002 x 650 x 810	479.00	VTT-31-40	21	550 x 430 x 360	219.00	VTTR-40TR	7	54.00
VTT-5-50	20	1002 x 650 x 810	479.00	VTT-31-50	15	550 x 430 x 360	219.00	VTTR-50TR	5	59.00
VTT-5-HSK63A	24	1002 x 650 x 810	479.00	VTT-31-HSK63A	18	550 x 430 x 360	219.00	VTTR-HSK63ATR	6	64.00

CNC ROTARY TABLES

GXA-S Series



- + Suitable for horizontal and vertical applications
- + Exclusive patented dual pneumatic piston braking system
- + Higher rotation speed
- + Equipped with high precision cross roller
- + Full gear depth transmitted by dual lead worm drive, resulting in higher efficiency and lower backlash

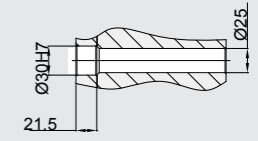
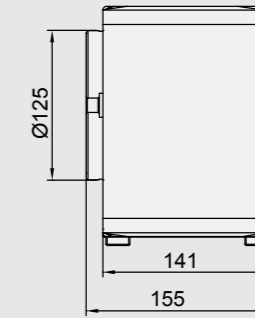
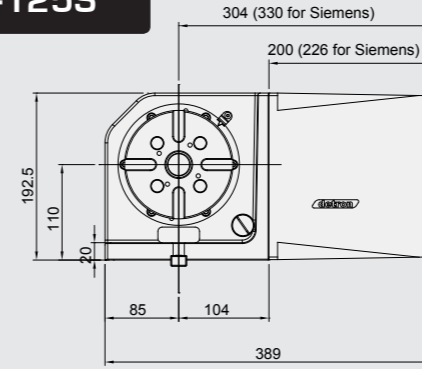
SPECIFICATIONS

PRICE ON APPLICATION

	Unit	GXA-125S	GXA-170S	GXA-250S/SL	GXA-250S
Worktable Diameter	mm	Ø125	Ø170	Ø210	Ø255
Centre bore diameter	mm	Ø30H7	Ø40H7	Ø65H7	Ø65H7
Through-bore diameter	mm	Ø25	Ø40	Ø65	Ø65
Height of Table	mm	155	175	175	190
Height of Centre	mm	110	135	160	160
Width of T-Slot	mm	12H7	12H7	12H7	12H7
Width of guide block	mm	18	18	18	18
Clamping Method/Pressure	MPa/psi	Pneumatic 0.5"50.7/79.8-101.5	Pneumatic 0.5"50.7/79.8-101.5	Pneumatic 0.5"50.7/79.8-101.5	Pneumatic 0.5"50.7/79.8-101.5
Clamping torque	Nm	140	300	400	400
Servo Motor Type	Fanuc Heidenhain	a2iF/β4is QSY-96A	a4iF/β8is QSY-116C	a4iF/β4is QSY-116C	a4iF/β4is QSY-116E
Transmission ratio		1/40	1/60	1/72	1/72
Max. table speed	min-1	66.6	53.3	53.3	53.3
Standard Loading inertia *	kg.m ²	0.2	0.72	1.38	1.38
Maximum loading inertia**	kg.m ²	1	3	5	5
Resolution	deg.	0.001	0.001	0.001	0.001
Indexing accuracy	sec.	40	20	20	20
Repeatability	sec.	6	6	6	6
Net weight (servo motor excluded)	kg	32	52	60	67
Allowable loading capacity	Vertical	kg	50	100	125
	Horizontal	kg	100	200	250
	Tailstock applied	kg	100	200	250
Allowable load (when table clamped)		N	9700	14000	17000
		Nm	410	1020	1265
		Nm	140	300	400
Allowable cutting torque	Nm	85	200	260	260

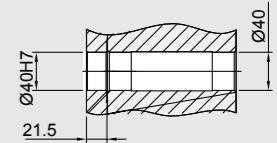
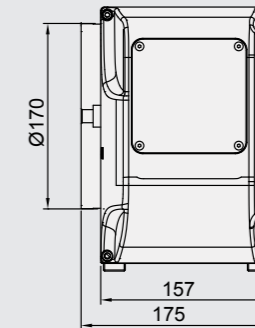
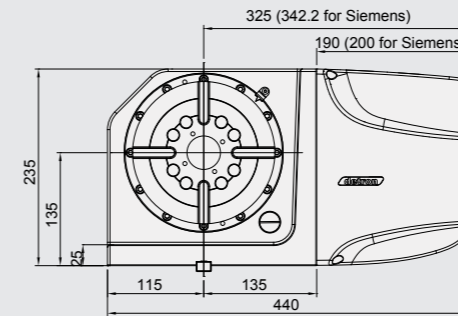
Allowable cutting torque at table speed of 1 min-1
Standard loading inertia* is allowed in max table speed. Contact us for the necessary adjustment of speed and other when Max loading inertia** is required

GXA-125S



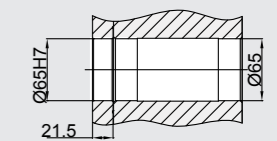
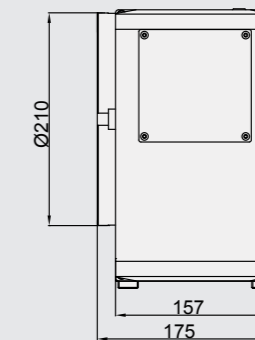
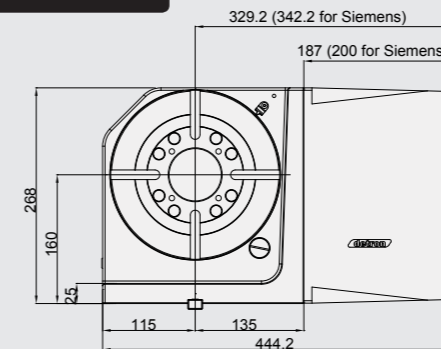
Through-hole Diameter

GXA-170S



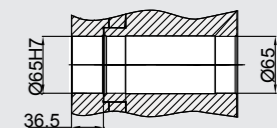
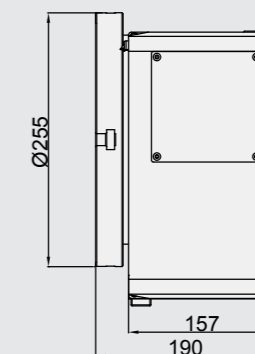
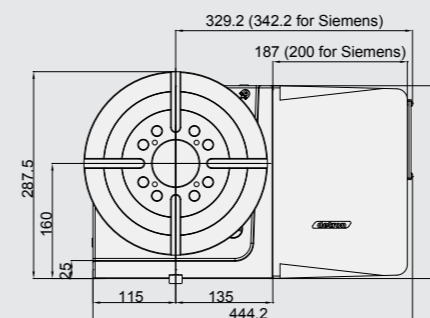
Through-hole Diameter

GXA-210S/SL



Through-hole Diameter

GXA-250S



Through-hole Diameter

GVA Series

- + Suitable for vertical applications
- + Heavy duty precision cross roller bearings
- + Super multiple pneumatic brake
- + Transmitted by dual lead worm with increased teeth depths for increased efficiency
- + Full gear depth transmitted by dual lead worm drive, resulting in higher efficiency and lower backlash



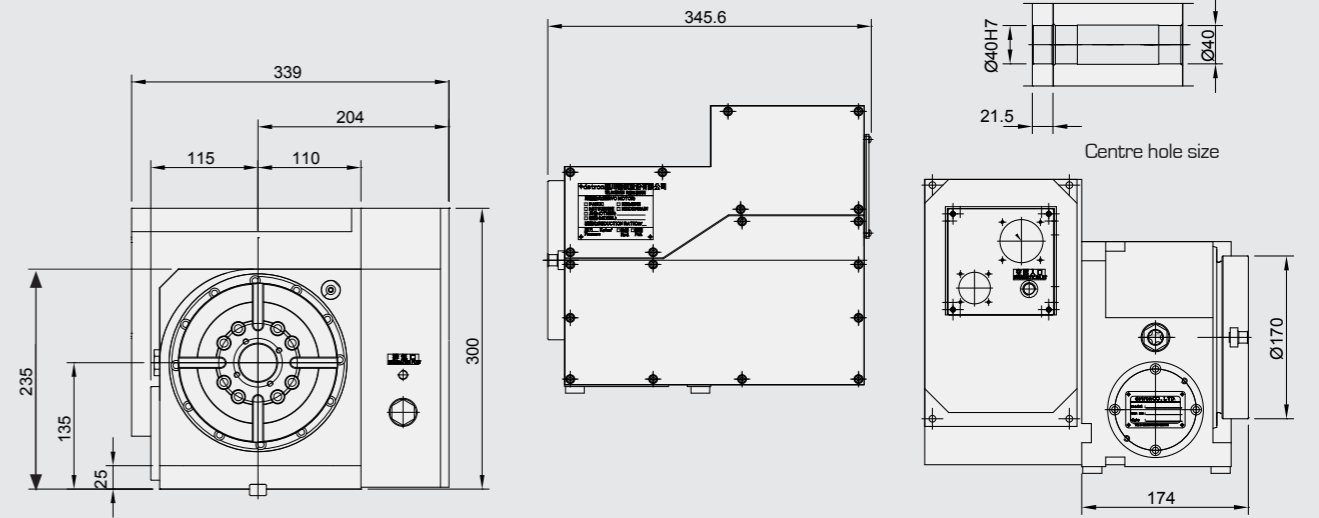
PRICE ON APPLICATION

SPECIFICATIONS

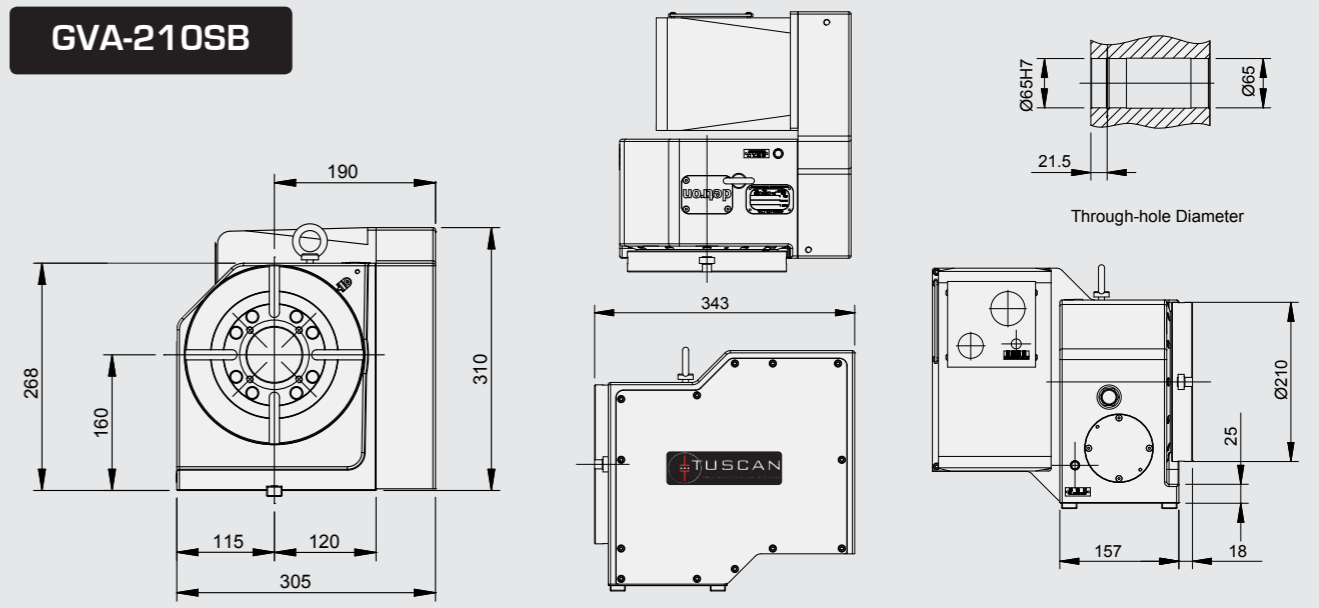
	Unit	GV-170SB	GVA-210SB	GVA-255HB
Worktable Diameter	mm	Ø170	Ø210	Ø255
Centre bore diameter	mm	Ø40H7	Ø65H7	Ø140H7
Height of Centre	mm	135	160	190
Width of T-Slot	mm	12H7	12H7	12H7
Width of guide block	mm	18	18	18
Clamping Method/Pressure	MPa/psi	Super multi - Pneumatic 0.55*0.7/79.8-101.5	Super multi - Pneumatic 0.55*0.7/79.8-101.5	Hydraulic 0.55*0.7/79.8-101.5
Clamping torque	Nm	250	400	900
Servo Motor Spec	Fanuc	a4i	a4i	a4i
	Heidenhain	QSY-116C	QSY-116C	QSY-116C
Transmission ratio		1/90	1/90	1/120
Max. table speed	min-1	44.4	44.4	22.2
Allowable Loading inertia (W.D2)/8	kg.m ²	0.28	0.68	1.21
Resolution	deg.	0.001	0.001	0.001
Indexing accuracy	sec.	20	20	15
Repeatability	sec.	6	6	6
Net weight (servo motor excluded)	kg	90	84	151
Allowable loading capacity	Vertical	kg	75	125
	Tailstock applied	kg	150	250
Allowable load (when table clamped)		N	14000	17000
		Nm	1020	1265
		Nm	250	400
Allowable cutting torque	Nm	170	260	550

Allowable cutting torque at table speed of 1 min-1

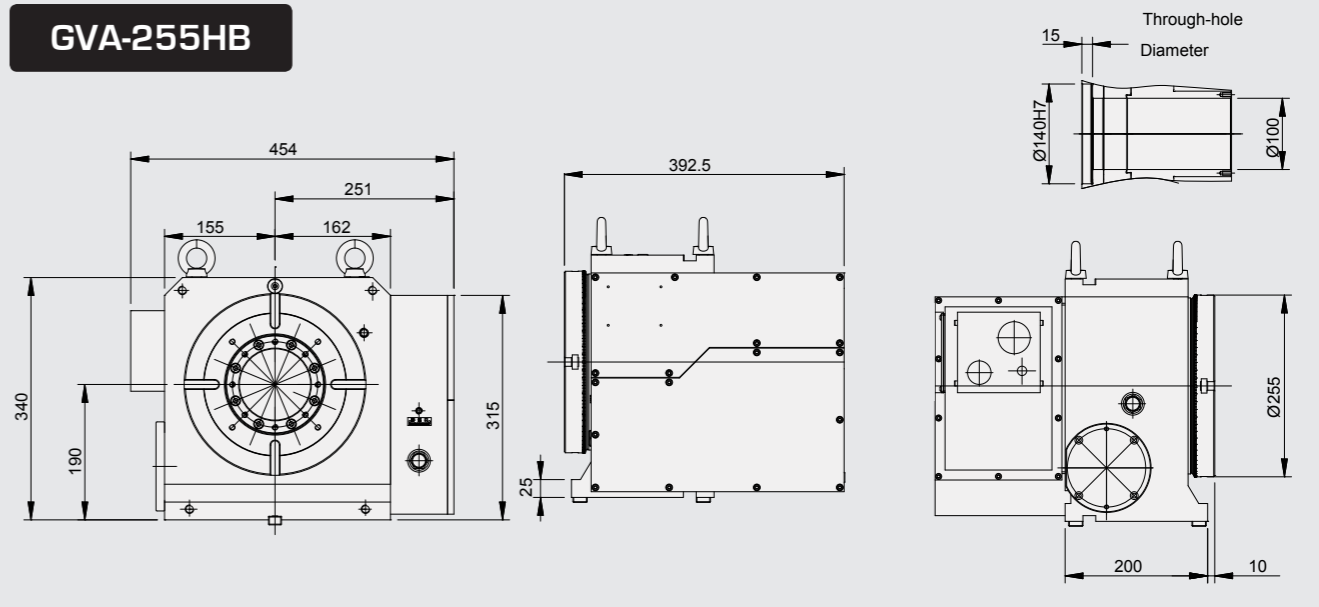
GV-170SB



GVA-210SB



GVA-255HB



GFA-S Series

- + Exclusive patented dual pneumatic piston braking system
- + High precision cross roller bearing
- + Transmitted by dual lead worm with high efficiency and full depth gear teeth

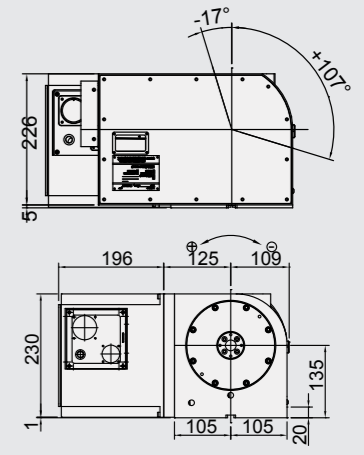
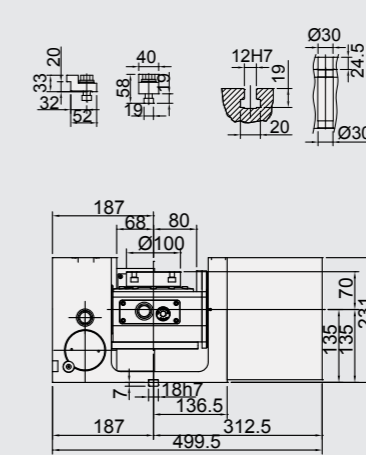
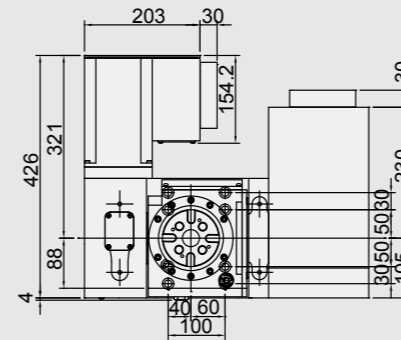


PRICE ON APPLICATION

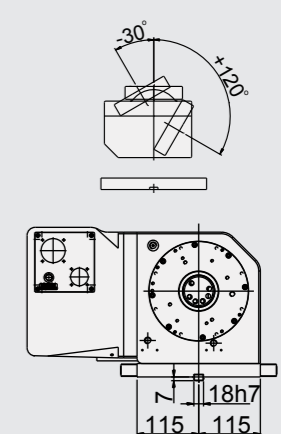
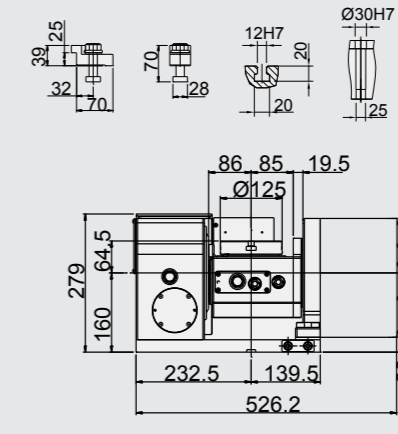
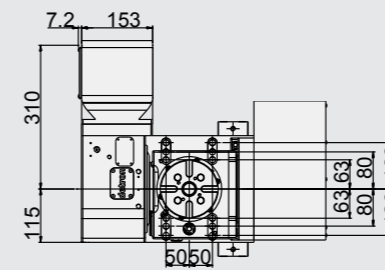
SPECIFICATIONS

		Unit	GFA-101S		GFA-125S		GFA-170S		GFA-210S	
Worktable diameter	mm		Ø100		Ø125		Ø170		Ø210	
Centre bore diameter	mm		Ø30H7		Ø30H7		Ø40H7		Ø65H7	
Height of table (horizontal)	mm		205		224.5		260		280	
Height of centre (vertical)	mm		135		160		260		210	
Width of T-Slot	mm		12H7		12H7		12H7		12H7	
Width of guide block	mm		18		18		18		18	
Clamping method/pressure	MPa/		Pneumatic		Pneumatic		Hydraulic		Hydraulic	
	psi		0.55*0.7/79.8-101.5		0.55*0.7/79.8-101.5		0.55*0.7/79.8-101.5		0.55*0.7/79.8-101.5	
Servo motor Spec			R	T	R	T	R	T	R	T
	Fanuc		a2iF	a2iF	a2iF/β8is	a4iF/β8is	a4iF/β8is	a4iF/β8is	a4iF/β8is	a8iF/β12is
	Siemens		1FK7042	1FK7042	1FK7042	1FK7060	1FK7042	1FK7060/1FK7063	1FK7042	1FK7060
	Heidenhain		QSY-96A	QSY-96G	QSY-96A	QSY-116C	QSY-116C	QSY-116C	QSY-96C	QSY-116C
Transmission ratio			1:75	1:120	1/90		1/120		1/120	
Max. table speed	min-1		33.3	16.6	44.4	44.4	33.3	22.2	33.3	22.2
Allowable loading capacity	In horizontal	kg	35		50		75		100	
	In Tilting (0-90°)	kg	20		35		50		70	
Allowable unbalancing work moment	W x L	Nm	24		40		40		62	
Allowable load (when clamped)	F	N	4000		4000		7000		14000	
	F x L	Nm	200		140		300		400	
	F x L	Nm	250		300		400		600	
Allowable loading inertia (W.D2/8)			0.044		0.1		0.28		0.55	
Resolution	deg.		0.001		0.001		0.001		0.001	
Indexing accuracy	sec.		40"	60"	40"	60"	20"	60"	20"	60"
Repeatability	sec.		6"	8"	6"	8"	6"	8"	6"	8"
Tilting angle range	deg.		+17°-107		-30°+120		-30°+120		-30°+120	
Net weight (servo motor excluded)	kg		90		120		180		230	
Allowable cutting torque	Nm		85		85		200		250	

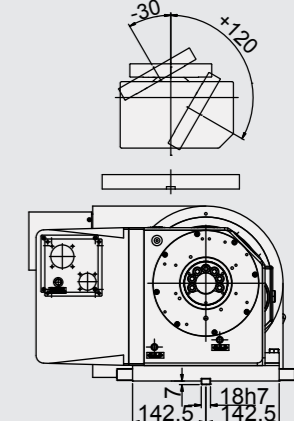
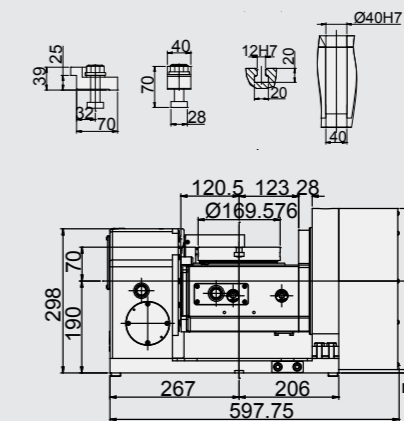
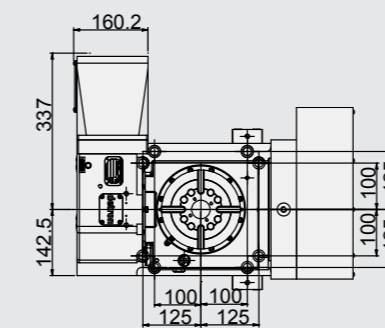
GFA-101S



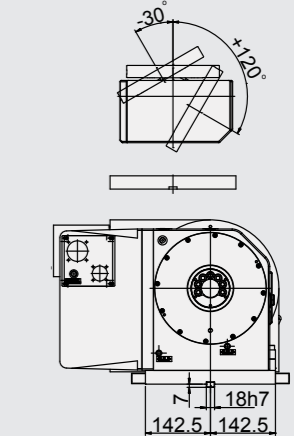
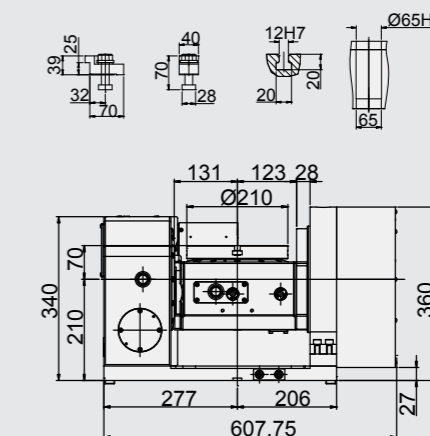
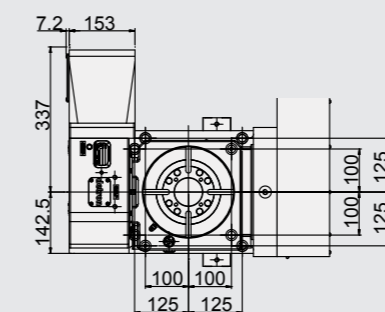
GFA-125S



GFA-170S



GFA-210S



GFA-H Series



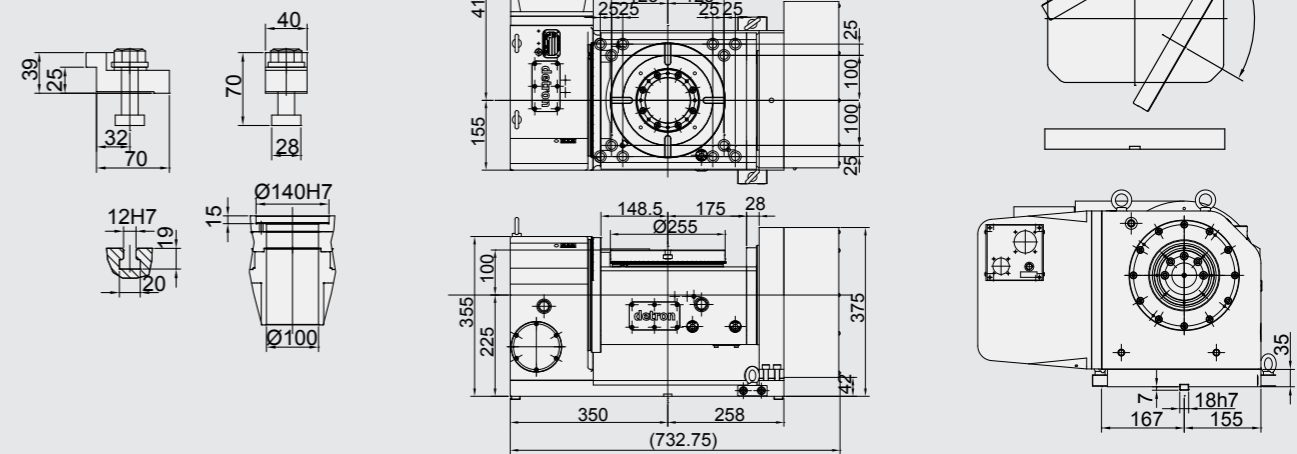
- + Exclusive patented dual pneumatic piston braking system
- + High precision cross roller bearing
- + Transmitted by dual lead worm with high efficiency and full depth gear teeth

PRICE ON APPLICATION

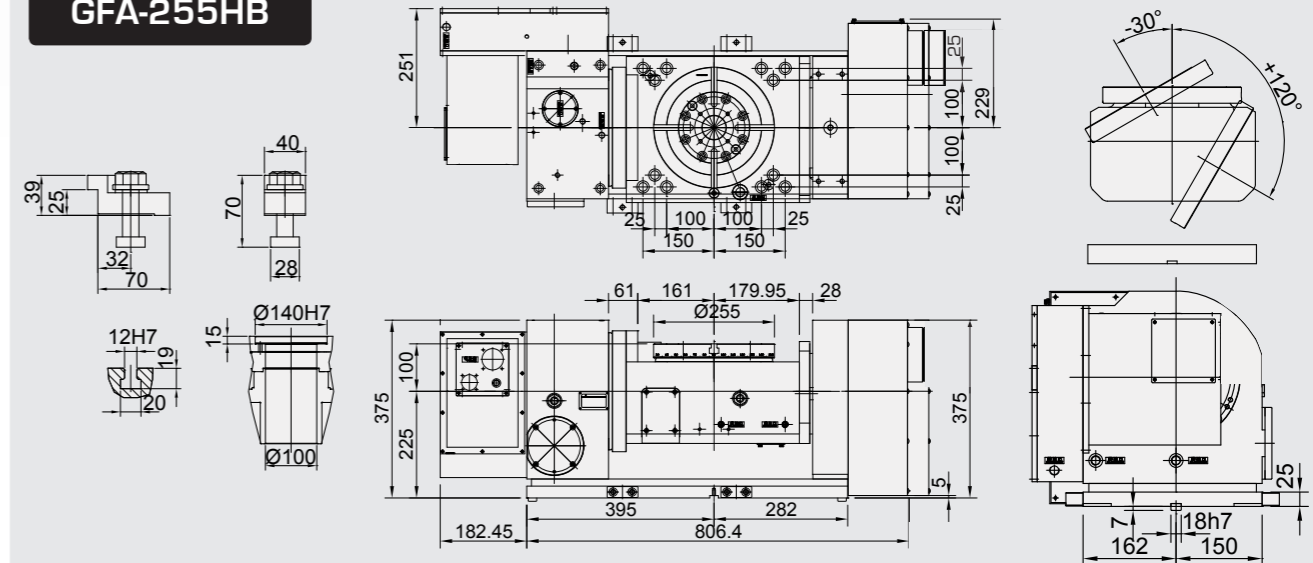
SPECIFICATIONS

		Unit	GFA-255H/HB		GFA-320H	
Worktable diameter		mm	Ø255		Ø320	
Centre bore diameter		mm	Ø140H7		Ø180H7	
Height of table (horizontal)		mm	325		355	
Height of centre (vertical)		mm	225		255	
Width of T-Slot		mm	12H7		14H7	
Width of guide block		mm	18		18	
Clamping method/pressure		MPa/psi	Hydraulic 5/725.0		Hydraulic 5/725.0	
Servo motor Spec			R	T	R	T
	Fanuc		a4iF/β8iF	a8iF/β12iF	a8iF/β12iF	a12iF/β22iF
	Siemens		1FK7060	1FK7063	1FK7063	1FK7083
	Heidenhain		QSY-116A	QSY-116E	QSY-116E	QSY-155B
Transmission ratio			1:90	1:120	1:120	1:120
Max. table speed		min-1	22.2	16.6	22.2	16.6
Allowable loading capacity	In horizontal	kg	120		200	
	In Tilting (0-90°)	kg	90		150	
Allowable unbalancing work moment	W x L	Nm	92		150	
Allowable load (when clamped)	F	N	16000		20000	
	F x L	Nm	900		1600	
	F x L	Nm	900		130	
Allowable loading inertia (W.D2/8)		kg.m2	0.98		2.6	
Resolution		deg.	0.001		0.001	
Indexing accuracy		sec.	15"	50"	15"	50"
Repeatability		sec.	6"	8"	6"	8"
Tilting angle range		deg.	-30°+120°		-30°+120°	
Net weight (servo motor excluded)		kg	320		470	
Allowable cutting torque		Nm	550		780	

GFA-255H



GFA-255HB



GFA-320H

