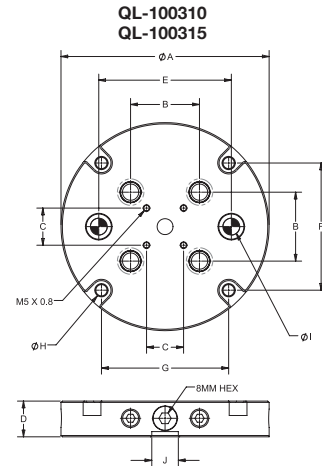
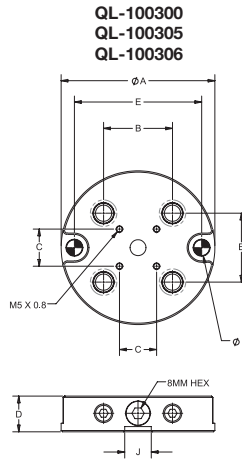
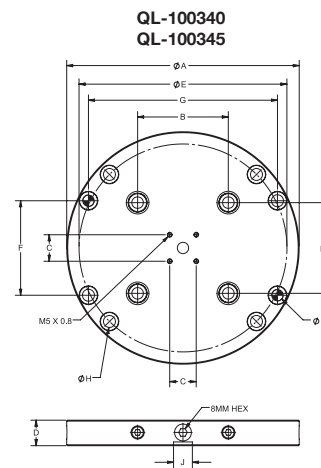
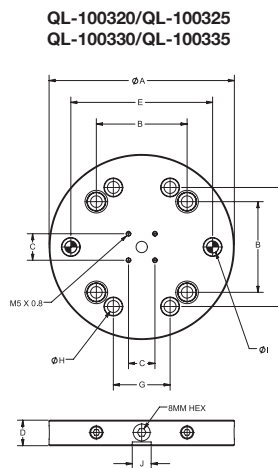


52mm Round Receivers



Part Number	A (mm)	B (mm)	C (mm)	D (mm)	Mounting Holes	E (mm)	F (mm)	G (mm)	H (mm)	I (mm)	J (mm)	Weight lbs (kg)	Max. Torque ft*lbs (Nm)	Pull Stud	Fixture-Pro Compatible
QL-100300	116	52	28	27	No	-	-	-	-	-	-	4.07 (1.85)	22 (30)	QL-200800	-
QL-100305	116	52	28	27	Yes	96	-	-	-	12H7	20	3.61 (1.64)	22 (30)	QL-200800	-
QL-100306	130	52	28	27	Yes	100	-	-	-	12H7	20	5.14 (2.33)	22 (30)	QL-200800	✓ (c)
QL-100310	157	52	28	27	No	-	-	-	-	-	-	8.02 (3.64)	22 (30)	QL-200800	-
QL-100315	157	52	28	27	Yes	100	96	96	9	12H7	20	7.47 (3.39)	22 (30)	QL-200800	✓ (c)

96mm Round Receivers



Part Number	A (mm)	B (mm)	C (mm)	D (mm)	Mounting Holes	E (mm)	F (mm)	G (mm)	H (mm)	I (mm)	J (mm)	Weight lbs (kg)	Max. Torque ft*lbs (Nm)	Pull Stud	Fixture-Pro Compatible
QL-100320	176	96	28	27	No	-	-	-	-	-	-	10.23 (4.64)	22 (30)	QL-200805	-
QL-100325	176	96	28	27	Yes	150	126	60	12.7	12H7	20	9.49 (4.30)	22 (30)	QL-200805	✓
QL-100330	196	96	28	27	No	-	-	-	-	-	-	12.81 (5.81)	22 (30)	QL-200805	-
QL-100335	196	96	28	27	Yes	150	126	60	12.7	12H7	20	12.45 (5.65)	22 (30)	QL-200805	✓
QL-100340	246	96	28	27	No	-	-	-	-	-	-	20.53 (9.31)	22 (30)	QL-200805	-
QL-100345	246	96	28	27	Yes	220	100	200	12.7	12H7	20	20.17 (9.15)	22 (30)	QL-200805	✓ (c)

✓ - Receiver will mount to 50mm QLS grid offset from center | ✓ (c) - Receiver will mount to 50mm QLS grid and be centered on grid.