



Jergens **QUICK-LOC**TM

MADE IN USA

QUICK CHANGE FIXTURING





Jergens Company Profile

Jergens Inc. was founded in 1942 by Jack Schron, Sr. and his father Christy, to provide standard components for building jigs and fixtures. Today the fourth generation of family involvement continues stronger than ever. Throughout its 75-year history the company has grown into four separate operating divisions: Tooling Component Division (TCD), Jergens Industrial Supply (JIS), Acme Industrial Company (AIC), and Advanced Systems Group (ASG) Division of Jergens. While all divisions are vital to the Jergens family, the TCD Division is the centerpiece of our manufacturing capabilities. In June 1999, Jergens moved into a new 110,000 square foot facility and prides itself by manufacturing over 80% of its product offering, as well as setting the standard for producing the highest quality components in our industry.

Jergens Tooling Component Division comprises three distinct business units: Workholding Solutions, Lifting Solutions and Specialty Fasteners. Building on its reputation of uncompromising quality standards, Jergens is committed to helping its customers achieve leaner, more profitable manufacturing, and continues to add products and engineered solutions for an integrated approach to “Manufacturing Efficiency.”

Today, you’ll find our tooling components, fasteners and hoist rings at work in just about every industry on every continent. And our innovative Quick Change Workholding Solutions like Ball Lock[®] Mounting System, Fixture-Pro[®] 5-Axis Workholding and Zero Point Systems have changed the way manufacturers worldwide think about productivity.

Jergens actively supports global, multinational and internationally based customers with metric dimensioned product offerings as well as many inch threaded products that are common in aerospace and industrial applications around the world. In important manufacturing markets in Canada, Europe, Asia and Latin America, Jergens representatives and stocking distributors have represented Jergens for more than 30 years. Our international representatives are trained technically on our products and provide expertise to customers and sub dealers in applying Jergens technologies to local industries. In recent years, two wholly owned affiliates were formed to serve the Chinese and Indian markets. Jergens (Shanghai) Commercial Co., Ltd, opened in 2006 and Jergens India Private Ltd., Navi Mumbai India opened in 2009. These fully registered trading subsidiaries employ trained multi-lingual engineers and commercial managers who provide marketing and importing, warehousing, distribution and technical support to our customers, distributors and local representatives.

Additionally, we offer a wide range of metalworking tools, clamps, and supplies to manufacturers in Northeastern Ohio, through our JIS Division. Acme Industrial, located in Carpentersville, Illinois, is a premium manufacturer of precision drill bushings and keylocking thread inserts. Our ASG Division specializes in products for light assembly ranging from torque-controlled electric screwdrivers to automation systems.

In addition to our unique product designs, we lead the industry with unparalleled customer service and delivery. Our website is a good example of our commitment to be the most innovative company in our industry. Customers and distributors can check stock and order on-line, view the Jergens catalog, and even download 2D, 3D and solid model CAD drawings in a variety of formats. Visit our website at www.jergensinc.com for the latest news and product information, as well as links to our other divisions. The Jergens family thanks you for your business.

Jergens, Inc.
Manufacturing Number: 697830
FSCM #94882
ISO 9001: 2015
Registration #00010133

QUICK CHANGE FIXTURING



Receivers

52mm Square Receivers.....	6
96mm Square Receivers.....	6
52mm Rectangular Receivers	7
96mm Rectangular Receivers	7
52mm Round Receivers.....	8
96mm Round Receivers	8
52mm Round Receivers w/ Bore.....	9
96mm Round Receivers w/ Bore.....	9
52mm Double Grid Receivers	10
96mm Double Grid Receivers	10
52mm Multi-Grid Receivers.....	11
96mm Multi-Grid Receivers.....	11

Reduction Receivers

96–52mm Reduction Receivers.....	12
96–52mm Multi-Loc Reduction Receivers.....	12

Risers

52mm Rectangular Risers.....	13
96mm Rectangular Risers.....	13
52mm Round Risers	14
96mm Round Risers	14

Integrated Risers

52mm Square Integrated Risers	15
96mm Square Integrated Risers.....	15
52mm Rectangular Integrated Risers.....	16
96mm Rectangular Integrated Risers	16
52mm Round Integrated Risers.....	17
96mm Round Integrated Risers.....	17

Support Pallets

52mm Square Support Pallets	18
96mm Square Support Pallets.....	18
52mm Round Support Pallets.....	19
96mm Round Support Pallets.....	19

Studs, Plugs & Keys

Pull Studs	20
Spacer Studs.....	20
Pull Stud Installation Dimensions	20
Plugs	21
Keys	21

Cubes & Twin Bases

52mm Cubes.....	22
96mm Cubes.....	22
Twin Base	23
Two Sided.....	23
Tri Cube.....	24

Rotary Receivers

52mm Rotary.....	25
96mm Rotary.....	25

Rotary Zero True Adapters

Rotary Zero True Adapters	26
---------------------------------	----

Alignment Tools

Alignment Tools.....	26
----------------------	----

Center Locating Pins

Straight Pins	27
Step Pins.....	27

Vises

75mm Self-Centering Vise	28
130mm Self-Centering Vise.....	28

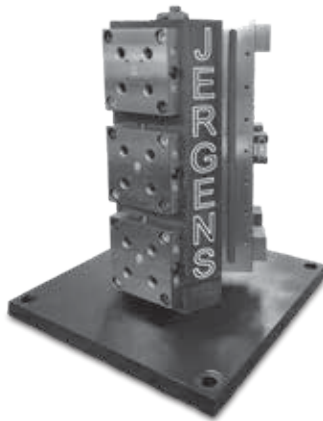
Vise Jaws & Accessories

Insert Jaw Sets for 75mm Vise	29
Soft Jaw Sets for 75mm Vise	29
Step Jaw Set for 75mm Vise.....	29
Insert Options	29
Insert Jaw Sets for 130mm Vise	30
Soft Jaw Sets for 130mm Vise	30
Step Jaw Set for 130mm Vise	30
Workstop for 130mm Vise	30



Jergens
QUICK-LOC™
MADE IN USA

A Solution for EVERY Platform



HORIZONTAL



VERTICAL



ROTARY



AVAILABLE IN BOTH
52mm & 96mm PATTERNS



REPEATABILITY
0.0003" (0.008mm)



SOLUTIONS FOR
HORIZONTAL, VERTICAL
AND ROTARY APPLICATIONS

QUICK-LOC™ PALLETS

Jergens new Quick-Loc™ pallets provide fast and repeatable fixture changes for small tooling platforms. They feature a single drive screw for fast operation. The comprehensive selection of base pallets, risers, and accessories allow this system to be configured for multiple applications. They are also compatible with other industry standard 52mm and 96mm pallet systems.



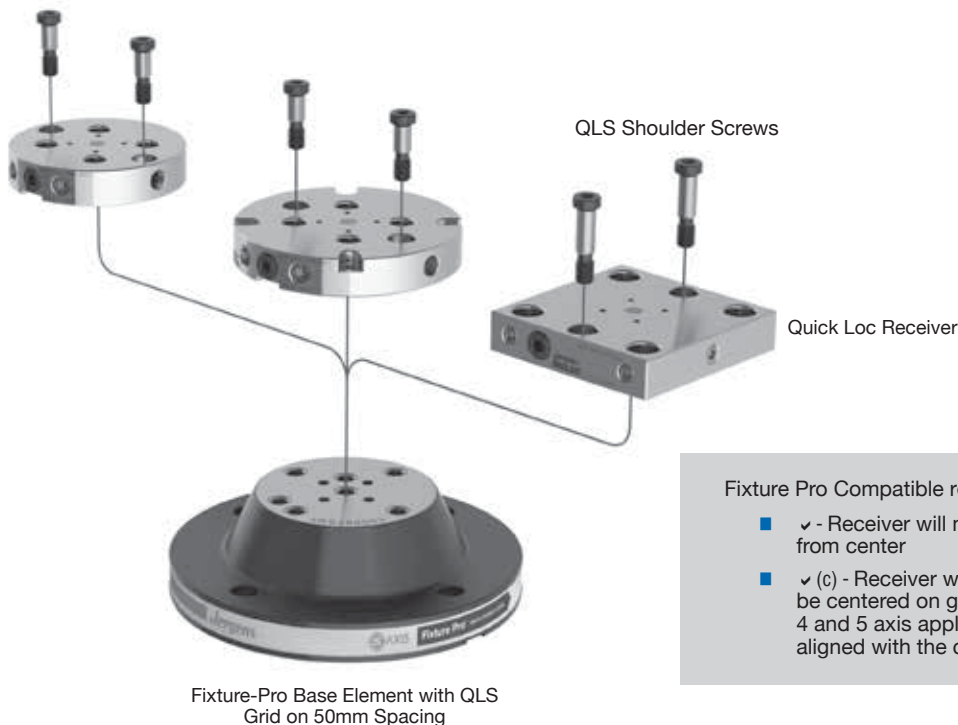
Jergens QUICK-LOC™ Versatile Receiver Mounting Options

Blank - Supplied without Mounting Holes



- Blank receivers are intended to be modified by users to add their own custom mounting holes.
- Jergens can also add custom mounting holes per customer request. Please contact technical sales at 1-877-426-2504 to request quote

Fixture-Pro™ Compatible - QLS Mounting



Fixture Pro Compatible receivers are denoted by ✓ or ✓ (c):

- ✓ - Receiver will mount to 50mm QLS grid offset from center
- ✓ (c) - Receiver will mount to 50mm QLS grid and be centered on grid. These receivers are ideal for 4 and 5 axis applications where the pallet must be aligned with the center of rotation

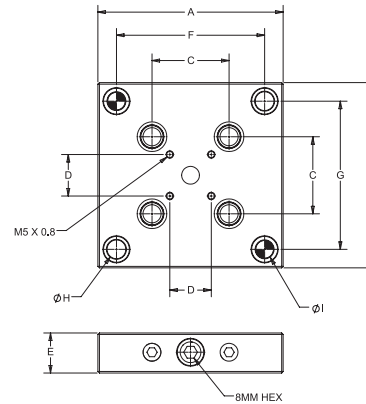


Receivers

Quick Loc™ Receivers provide a platform for fast and accurate mounting of fixtures and workpieces. Square, rectangular, and round styles are available. Units without mounting holes allow users to add their own custom mounting configuration.

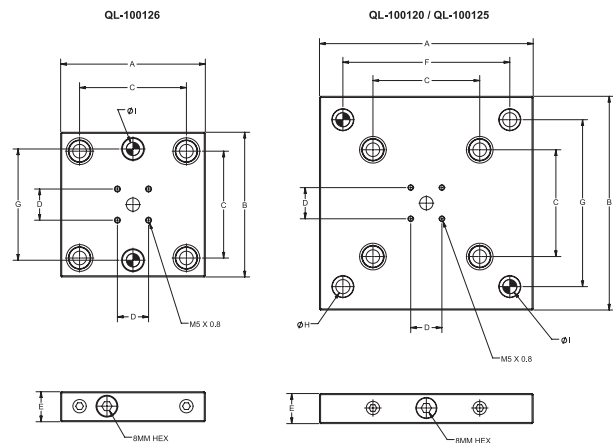
- Material: Alloy Steel
- Heat Treat: Case Hardened, Rc 58-62
- Thickness Tolerance: ±.01mm
- Available with or without mounting holes

52mm Square Receivers



Part Number	A (mm)	B (mm)	C (mm)	D (mm)	E (mm)	Mounting Holes	F (mm)	G (mm)	H (mm)	I (mm)	Weight lbs (kg)	Max. Torque ft*lbs (Nm)	Pull Stud	Fixture-Pro Compatible
QL-100100	104	104	52	28	27	No	-	-	-	-	4.38 (1.99)	22 (30)	QL-200800	-
QL-100105	104	104	52	28	27	Yes	82	82	12.7	12H7	3.97 (1.80)	22 (30)	QL-200800	-
QL-100110	125	125	52	28	27	No	-	-	-	-	6.46 (2.93)	22 (30)	QL-200800	-
QL-100115	125	125	52	28	27	Yes	100	100	12.7	12H7	6.12 (2.78)	22 (30)	QL-200800	✓ (c)

96mm Square Receivers



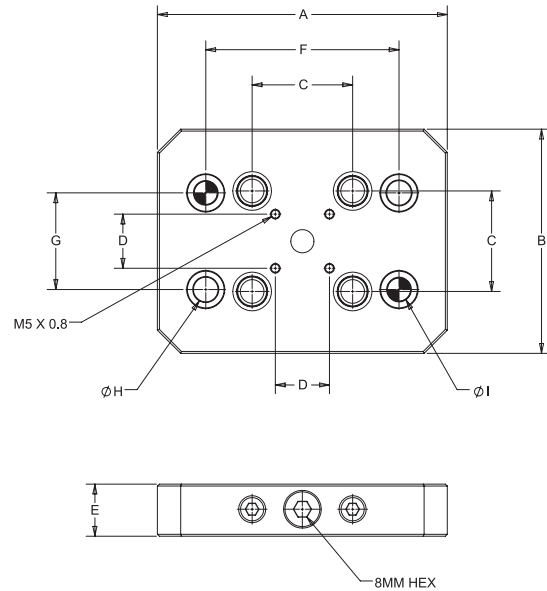
Part Number	A (mm)	B (mm)	C (mm)	D (mm)	E (mm)	Mounting Holes	F (mm)	G (mm)	H (mm)	I (mm)	Weight lbs (kg)	Max. Torque ft*lbs (Nm)	Pull Stud	Fixture-Pro Compatible
QL-100120	192	192	96	28	27	No	-	-	-	-	15.81 (7.17)	22 (30)	QL-200805	-
QL-100125	192	192	96	28	27	Yes	150	150	12.7	12H7	15.44 (7.00)	22 (30)	QL-200805	✓
QL-100126	130	130	96	28	27	Yes	-	100	-	12H7	6.95 (3.15)	22 (30)	QL-200805	✓ (c)

✓ - Receiver will mount to 50mm QLS grid offset from center | ✓ (c) - Receiver will mount to 50mm QLS grid and be centered on grid.

QUICK CHANGE FIXTURING » QUICK-LOC™

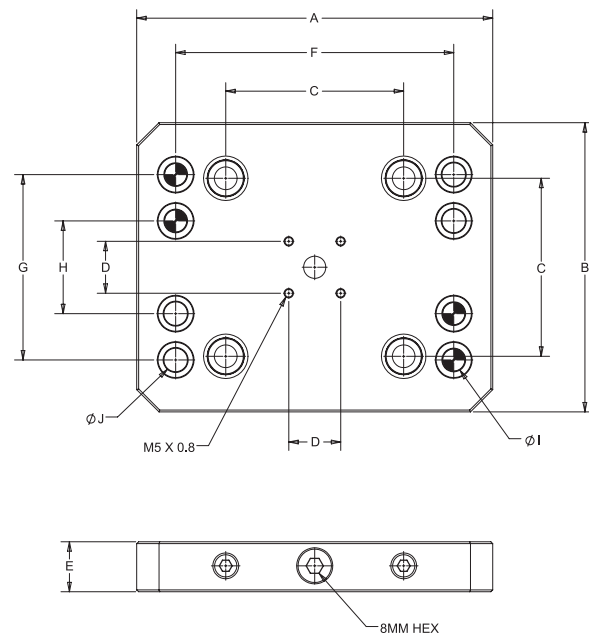


52mm Rectangular Receivers



Part Number	A (mm)	B (mm)	C (mm)	D (mm)	E (mm)	Mounting Holes	F (mm)	G (mm)	H (mm)	I (mm)	Weight lbs (kg)	Max. Torque ft*lbs (Nm)	Pull Stud	Fixture-Pro Compatible
QL-100200	150	126	52	28	27	No	-	-	-	-	7.15 (3.24)	22 (30)	QL-200800	-
QL-100205	150	126	52	28	27	Yes	100	50	12.7	12H7	6.82 (3.09)	22 (30)	QL-200800	✓

96mm Rectangular Receivers

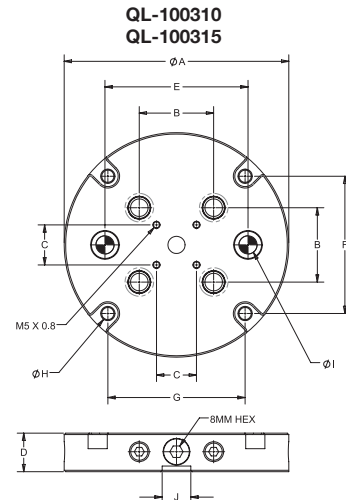
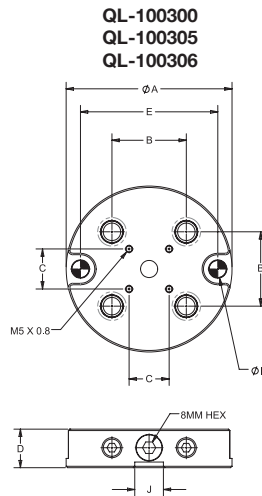


Part Number	A (mm)	B (mm)	C (mm)	D (mm)	E (mm)	Mounting Holes	F (mm)	G (mm)	H (mm)	I (mm)	J (mm)	Weight lbs (kg)	Max. Torque ft*lbs (Nm)	Pull Stud	Fixture-Pro Compatible
QL-100210	192	156	96	28	27	No	-	-	-	-	-	12.61 (5.72)	22 (30)	QL-200805	-
QL-100215	192	156	96	28	27	Yes	150	100	50	12H7	12.7	11.77 (5.34)	22 (30)	QL-200805	✓
QL-100216	229	156	96	28	27	Yes	200	100	-	12H7	12.7	15.06 (6.83)	22 (30)	QL-200805	✓ (c)

✓ - Receiver will mount to 50mm QLS grid offset from center | ✓ (c) - Receiver will mount to 50mm QLS grid and be centered on grid.

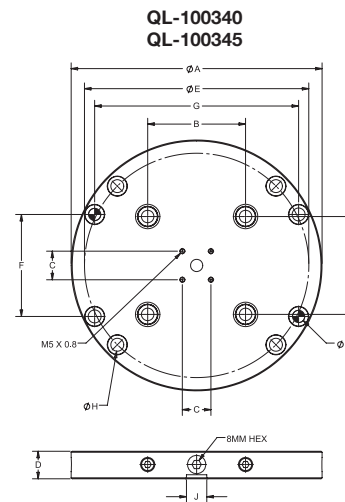
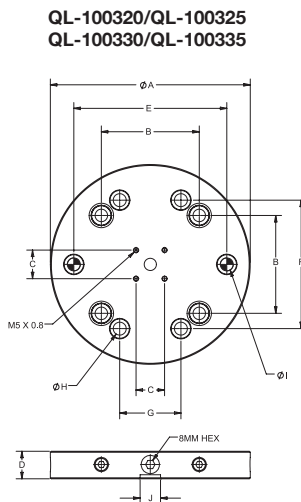


52mm Round Receivers



Part Number	A (mm)	B (mm)	C (mm)	D (mm)	Mounting Holes	E (mm)	F (mm)	G (mm)	H (mm)	I (mm)	J (mm)	Weight lbs (kg)	Max. Torque ft*lbs (Nm)	Pull Stud	Fixture-Pro Compatible
QL-100300	116	52	28	27	No	-	-	-	-	-	-	4.07 (1.85)	22 (30)	QL-200800	-
QL-100305	116	52	28	27	Yes	96	-	-	-	12H7	20	3.61 (1.64)	22 (30)	QL-200800	-
QL-100306	130	52	28	27	Yes	100	-	-	-	12H7	20	5.14 (2.33)	22 (30)	QL-200800	✓ (c)
QL-100310	157	52	28	27	No	-	-	-	-	-	-	8.02 (3.64)	22 (30)	QL-200800	-
QL-100315	157	52	28	27	Yes	100	96	96	9	12H7	20	7.47 (3.39)	22 (30)	QL-200800	✓ (c)

96mm Round Receivers



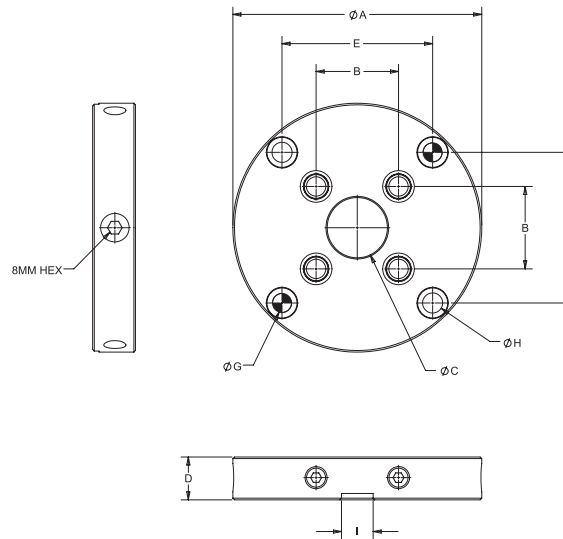
Part Number	A (mm)	B (mm)	C (mm)	D (mm)	Mounting Holes	E (mm)	F (mm)	G (mm)	H (mm)	I (mm)	J (mm)	Weight lbs (kg)	Max. Torque ft*lbs (Nm)	Pull Stud	Fixture-Pro Compatible
QL-100320	176	96	28	27	No	-	-	-	-	-	-	10.23 (4.64)	22 (30)	QL-200805	-
QL-100325	176	96	28	27	Yes	150	126	60	12.7	12H7	20	9.49 (4.30)	22 (30)	QL-200805	✓
QL-100330	196	96	28	27	No	-	-	-	-	-	-	12.81 (5.81)	22 (30)	QL-200805	-
QL-100335	196	96	28	27	Yes	150	126	60	12.7	12H7	20	12.45 (5.65)	22 (30)	QL-200805	✓
QL-100340	246	96	28	27	No	-	-	-	-	-	-	20.53 (9.31)	22 (30)	QL-200805	-
QL-100345	246	96	28	27	Yes	220	100	200	12.7	12H7	20	20.17 (9.15)	22 (30)	QL-200805	✓ (c)

✓ - Receiver will mount to 50mm QLS grid offset from center | ✓ (c) - Receiver will mount to 50mm QLS grid and be centered on grid.

QUICK CHANGE FIXTURING » QUICK-LOC™

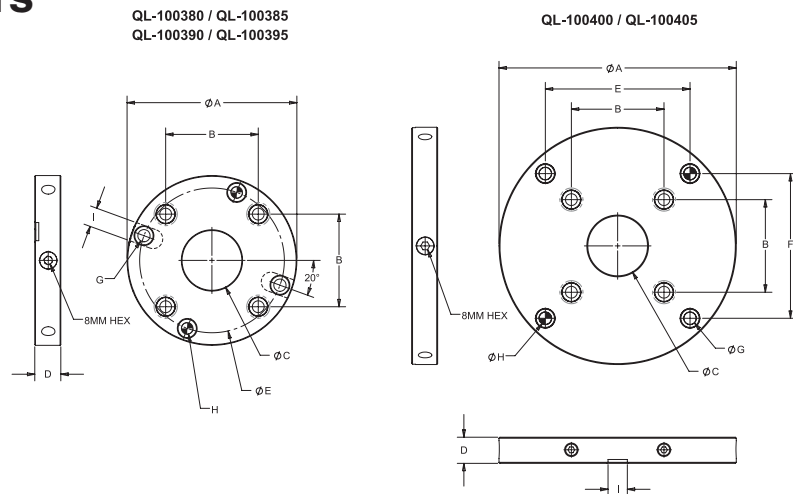


52mm Round Receivers with Bore



Part Number	A (mm)	B (mm)	C (mm)	D (mm)	Mounting Holes	E (mm)	F (mm)	G (mm)	H (mm)	I (mm)	Weight lbs (kg)	Max. Torque ft*lbs (Nm)	Pull Stud	Fixture-Pro Compatible
QL-100370	157	52	38	27	No	-	-	-	-	-	7.55 (3.42)	22 (30)	QL-200800	-
QL-100375	157	52	38	27	Yes	95	95	12H7	12.7	20	7.19 (3.26)	22 (30)	QL-200800	-

96mm Round Receivers with Bore

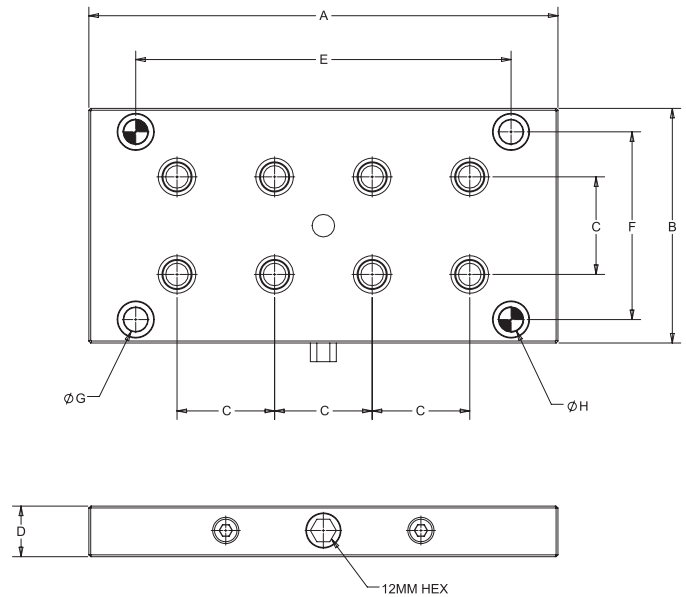


Part Number	A (mm)	B (mm)	C (mm)	D (mm)	Mounting Holes	E (mm)	F (mm)	G (mm)	H (mm)	I (mm)	Weight lbs (kg)	Max. Torque ft*lbs (Nm)	Pull Stud	Fixture-Pro Compatible
QL-100380	176	96	62	27	No	-	-	-	-	-	8.80 (3.99)	22 (30)	QL-200805	-
QL-100385	176	96	62	27	Yes	150	-	12.7	12H7	20	8.54 (3.87)	22 (30)	QL-200805	-
QL-100390	196	96	62	27	No	-	-	-	-	-	11.48 (5.21)	22 (30)	QL-200805	-
QL-100395	196	96	62	27	Yes	150	-	12.7	12H7	20	11.22 (5.09)	22 (30)	QL-200805	✓
QL-100400	246	96	62	27	No	-	-	-	-	-	19.21 (8.71)	22 (30)	QL-200805	-
QL-100405	246	96	62	27	Yes	150	150	12.7	12H7	20	18.95 (8.60)	22 (30)	QL-200805	✓

✓ - Receiver will mount to 50mm QLS grid offset from center | ✓ (C) - Receiver will mount to 50mm QLS grid and be centered on grid.

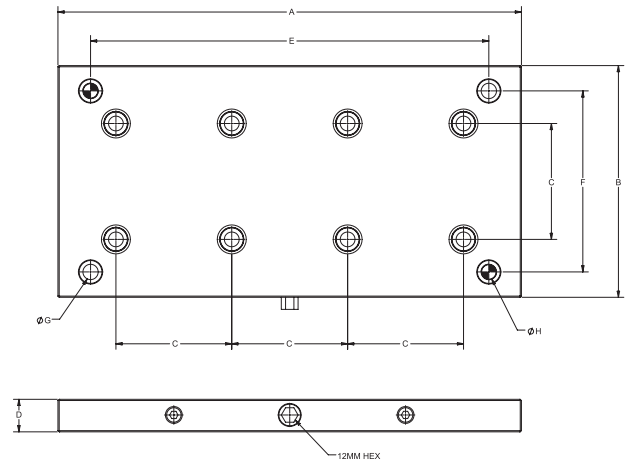


52mm Double Grid Receivers



Part Number	A (mm)	B (mm)	C (mm)	D (mm)	Mounting Holes	E (mm)	F (mm)	G (mm)	H (mm)	Weight lbs (kg)	Max. Torque ft*lbs (Nm)	Pull Stud	Fixture-Pro Compatible
QL-100245	250	125	52	27	No	-	-	-	-	12.66 (5.74)	22 (30)	QL-200800	-
QL-100250	250	125	52	27	Yes	200	100	12.7	12H7	12.29 (5.57)	22 (30)	QL-200800	✓ (c)

96mm Double Grid Receivers

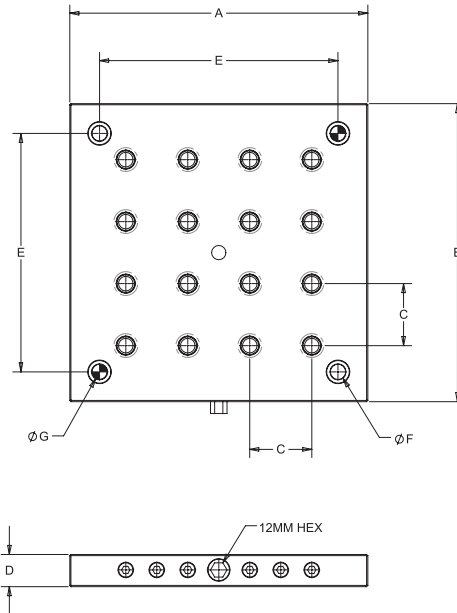
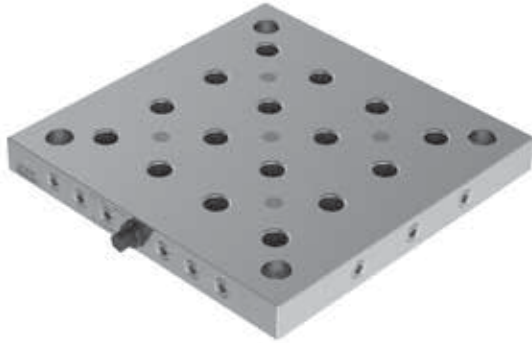


Part Number	A (mm)	B (mm)	C (mm)	D (mm)	Mounting Holes	E (mm)	F (mm)	G (mm)	H (mm)	Weight lbs (kg)	Max. Torque ft*lbs (Nm)	Pull Stud	Fixture-Pro Compatible
QL-100255	384	192	96	27	No	-	-	-	-	31.49 (14.28)	22 (30)	QL-200805	-
QL-100260	384	192	96	27	Yes	350	150	12.7	12H7	30.75 (13.95)	22 (30)	QL-200805	✓

✓ - Receiver will mount to 50mm QLS grid offset from center | ✓ (c) - Receiver will mount to 50mm QLS grid and be centered on grid.

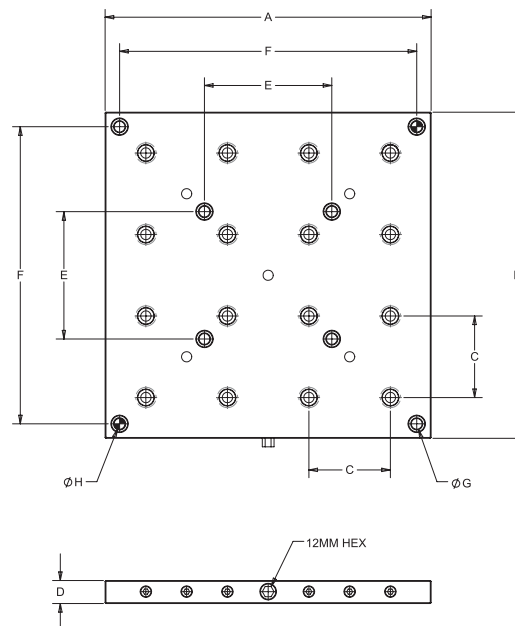
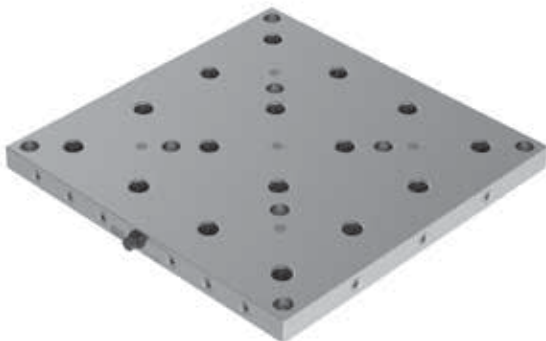


52mm Multi-Grid Receivers



Part Number	A (mm)	B (mm)	C (mm)	D (mm)	Mounting Holes	E (mm)	F (mm)	G (mm)	Weight lbs (kg)	Max. Torque ft*lbs (Nm)	Pull Stud	Fixture-Pro Compatible
QL-300318	250	250	52	27	No	-	-	-	25.3 (11.5)	22 (30)	QL-200800	-
QL-300320	250	250	52	27	Yes	200	12.7	12H7	23.7 (10.8)	22 (30)	QL-200800	✓ (c)

96mm Multi-Grid Receivers



Part Number	A (mm)	B (mm)	C (mm)	D (mm)	Mounting Holes	E (mm)	F (mm)	G (mm)	H (mm)	Weight lbs (kg)	Max. Torque ft*lbs (Nm)	Pull Stud	Fixture-Pro Compatible
QL-300325	384	384	96	27	No	-	-	-	-	62.3 (28.2)	22 (30)	QL-200805	-
QL-300330	384	384	96	27	Yes	150	350	12.7	12H7	60.1 (27.3)	22 (30)	QL-200805	✓

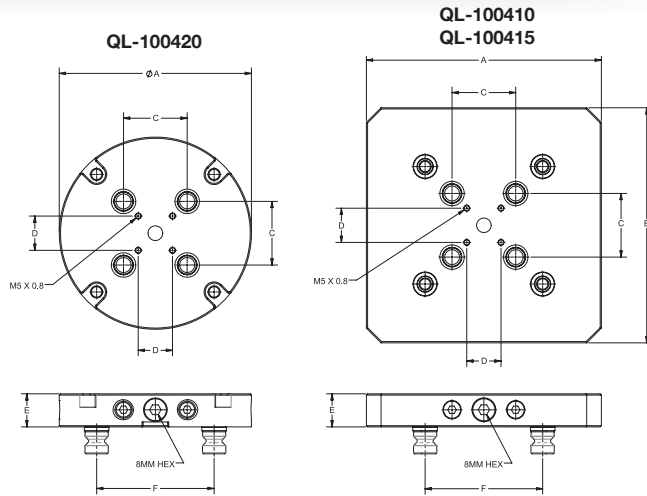
✓ - Receiver will mount to 50mm QLS grid offset from center | ✓ (c) - Receiver will mount to 50mm QLS grid and be centered on grid.

Reduction Receivers

Reduction Receivers function as adapters to allow tooling utilizing the smaller 52mm pattern to be mounted on 96mm pattern receivers.

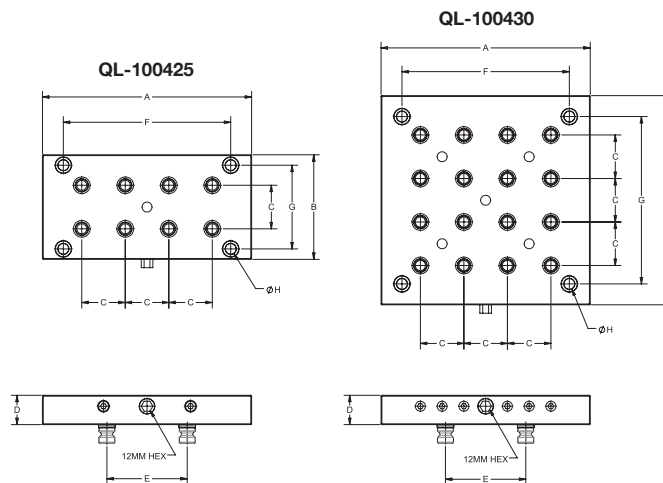
- Material: Alloy Steel
- Heat Treat: Case Hardened, Rc 58-62
- Thickness Tolerance: ±.01mm
- Pull Studs Included

96-52mm Reduction Receivers



Part Number	A (mm)	B (mm)	C (mm)	D (mm)	E (mm)	F (mm)	Weight lbs (kg)	Max. Torque ft*lbs (Nm)	Pull Stud
QL-100410	192	192	52	28	27	96	15.71 (7.13)	22 (30)	QL-200800 / QL-200805
QL-100415	150	126	52	28	27	96	7.72 (3.50)	22 (30)	QL-200800 / QL-200805
QL-100420	157	-	52	28	27	96	7.90 (3.58)	22 (30)	QL-200800 / QL-200805

96-52mm Multi-Loc Reduction Receivers



Part Number	A (mm)	B (mm)	C (mm)	D (mm)	E (mm)	F (mm)	G (mm)	H (mm)	Weight lbs (kg)	Max. Torque ft*lbs (Nm)	Pull Stud
QL-100425	250	125	52	35	96	200	100	12.7	16.27 (7.38)	22 (30)	QL-200800 / QL-200805
QL-100430	250	250	52	35	96	200	200	12.7	32.65 (14.81)	22 (30)	QL-200800 / QL-200805

QUICK CHANGE FIXTURING » QUICK-LOC™

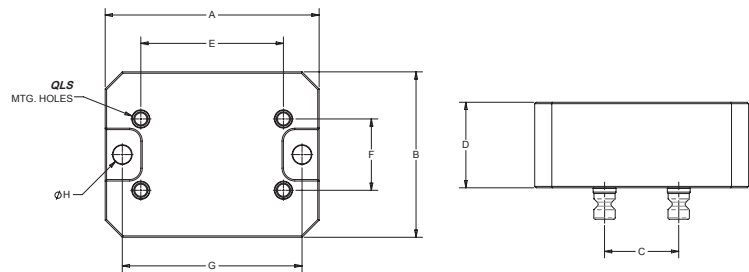


Risers

Quick-Loc™ Risers provide a means of raising tooling up from the machine table to gain greater part access. Rectangular and round styles are available. The topside mounting holes will accept standard Quick-Loc™ Receivers.

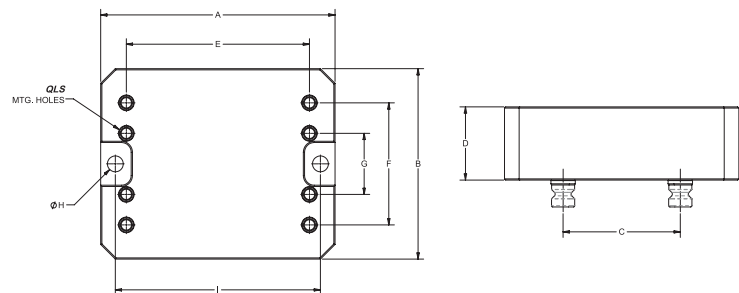
- Material: 6061 Aluminum
- Finish: Black Anodize
- Thickness Tolerance: ±.01mm
- Pull Studs Included

52mm Rectangular Risers



Part Number	A (mm)	B (mm)	C (mm)	D (mm)	E (mm)	F (mm)	G (mm)	H (mm)	Weight lbs (kg)	Pull Stud
QL-200100	150	116	52	60	100	50	126	13	5.74 (2.60)	QL-200800
QL-200105	150	116	52	100	100	50	126	13	9.37 (4.25)	QL-200800

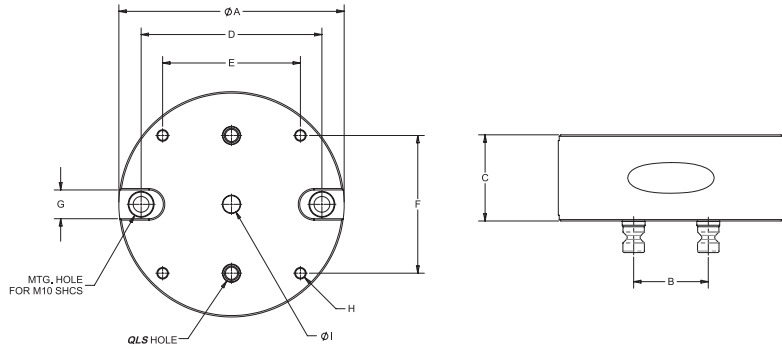
96mm Rectangular Risers



Part Number	A (mm)	B (mm)	C (mm)	D (mm)	E (mm)	F (mm)	G (mm)	H (mm)	I (mm)	Weight lbs (kg)	Pull Stud
QL-200130	192	156	96	60	150	100	50	13	168	9.91 (4.50)	QL-200805
QL-200135	192	156	96	100	150	100	50	13	168	16.76 (7.60)	QL-200805

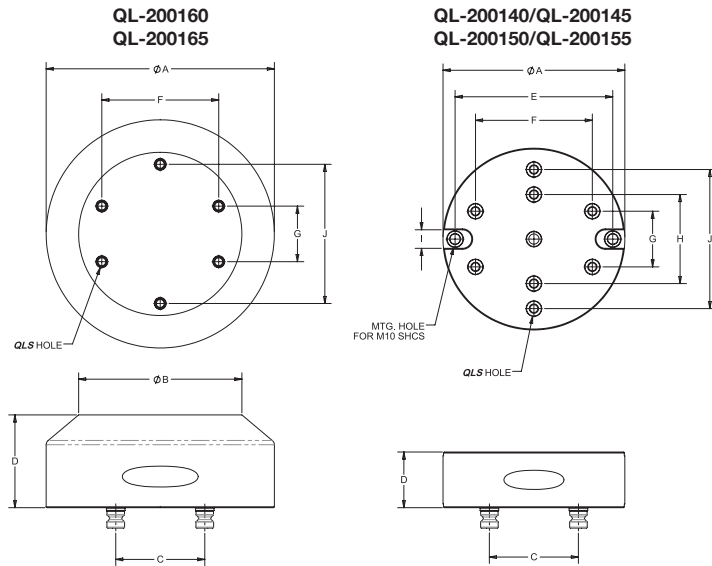


52mm Round Risers



Part Number	A (mm)	B (mm)	C (mm)	D (mm)	E (mm)	F (mm)	G (mm)	H (mm)	I (mm)	Weight lbs (kg)	Pull Stud
QL-200110	116	52	60	96	–	96	20	–	12	3.78 (1.71)	QL-200800
QL-200115	116	52	100	96	–	96	20	–	12	6.22 (2.82)	QL-200800
QL-200120	157	52	60	126	96	96	20	M8	12	6.62 (3.00)	QL-200800
QL-200125	157	52	100	126	96	96	20	M8	12	11.4 (5.17)	QL-200800

96mm Round Risers



Part Number	A (mm)	B (mm)	C (mm)	D (mm)	E (mm)	F (mm)	G (mm)	H (mm)	I (mm)	J (mm)	Weight lbs (kg)	Pull Stud
QL-200140	176	–	96	60	150	126	60	96	20	150	8.25 (3.74)	QL-200805
QL-200145	176	–	96	100	150	126	60	96	20	150	14.00 (6.35)	QL-200805
QL-200150	196	–	96	60	170	126	60	96	20	150	10.31 (4.68)	QL-200805
QL-200155	196	–	96	100	170	126	60	96	20	150	17.59 (7.98)	QL-200805
QL-200160	246	176	96	60	–	126	60	–	–	150	14.40 (6.53)	QL-200805
QL-200165	246	176	96	100	–	126	60	–	–	150	25.94 (11.77)	QL-200805

QUICK CHANGE FIXTURING » QUICK-LOC™

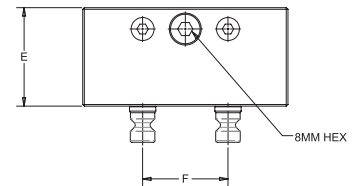
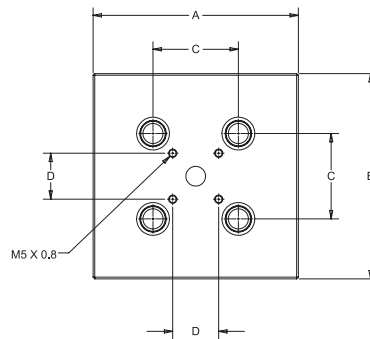


Integrated Risers

Quick-Loc™ Integrated Risers provide a means of raising tooling up from the machine table to gain greater part access. Square, rectangular and round styles are available. These risers feature a Quick-Loc™ Receiver built directly into the top of the riser body.

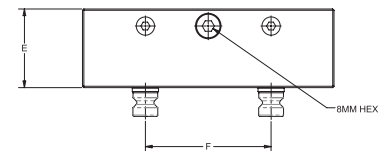
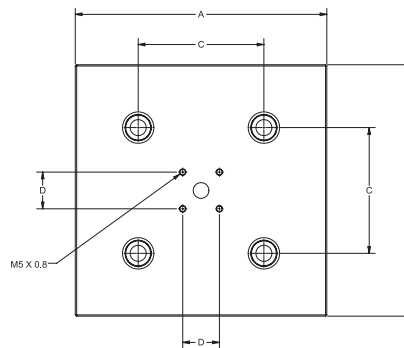
- Material: Alloy Steel
- Heat Treat: Case Hardened, Rc 58-62
- Thickness Tolerance: ±.01mm
- Pull Studs Included

52mm Square Integrated Risers



Part Number	A (mm)	B (mm)	C (mm)	D (mm)	E (mm)	F (mm)	Weight lbs (kg)	Max.Torque ft*lbs (Nm)	Pull Stud
QL-200200	104	104	52	28	60	52	10.67 (4.84)	22 (30)	QL-200800
QL-200205	104	104	52	28	100	52	17.85 (8.10)	22 (30)	QL-200800
QL-200210	125	125	52	28	60	52	15.35 (6.96)	22 (30)	QL-200800
QL-200215	125	125	52	28	100	52	26.01 (11.80)	22 (30)	QL-200800

96mm Square Integrated Risers

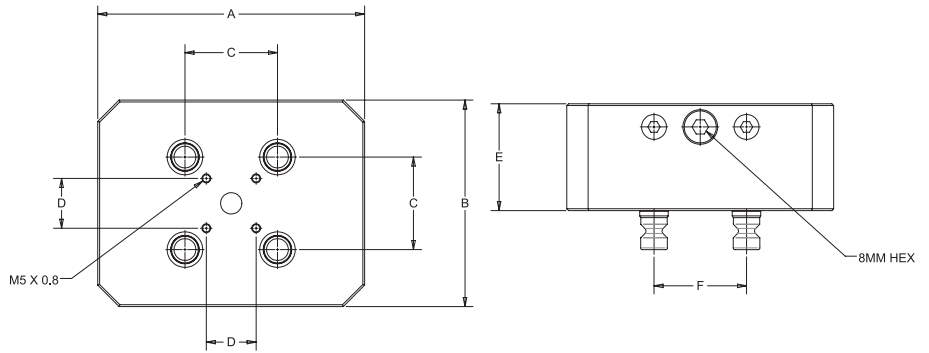


Part Number	A (mm)	B (mm)	C (mm)	D (mm)	E (mm)	F (mm)	Weight lbs (kg)	Max.Torque ft*lbs (Nm)	Pull Stud
QL-200220	192	192	96	28	60	96	36.96 (16.76)	22 (30)	QL-200805
QL-200225	192	192	96	28	100	96	61.88 (28.07)	22 (30)	QL-200805

QUICK CHANGE FIXTURING » QUICK-LOC™

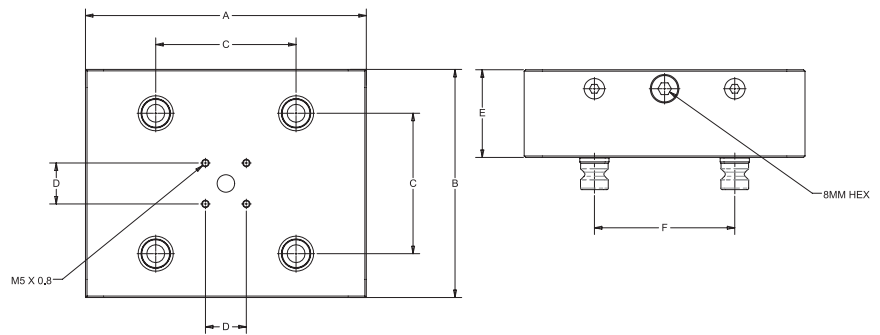


52mm Rectangular Integrated Risers



Part Number	A (mm)	B (mm)	C (mm)	D (mm)	E (mm)	F (mm)	Weight lbs (kg)	Max.Torque ft*lbs (Nm)	Pull Stud
QL-200230	150	116	52	28	60	52	17.00 (7.71)	22 (30)	QL-200800
QL-200235	150	116	52	28	100	52	28.63 (12.99)	22 (30)	QL-200800

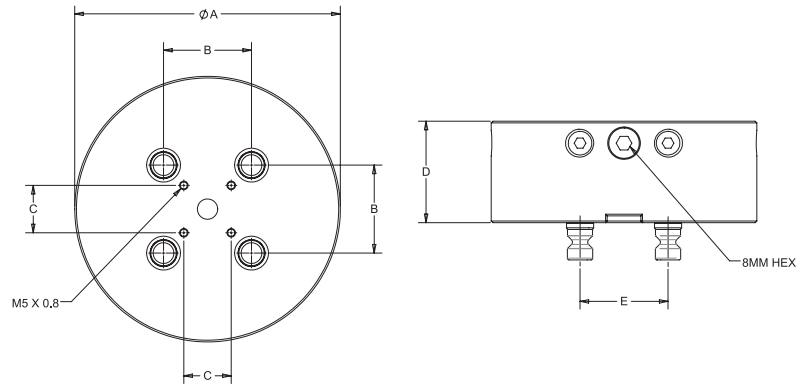
96mm Rectangular Integrated Risers



Part Number	A (mm)	B (mm)	C (mm)	D (mm)	E (mm)	F (mm)	Weight lbs (kg)	Max.Torque ft*lbs (Nm)	Pull Stud
QL-200240	192	156	96	28	60	96	30 (13.64)	22 (30)	QL-200805
QL-200245	192	156	96	28	100	96	42 (19.05)	22 (30)	QL-200805

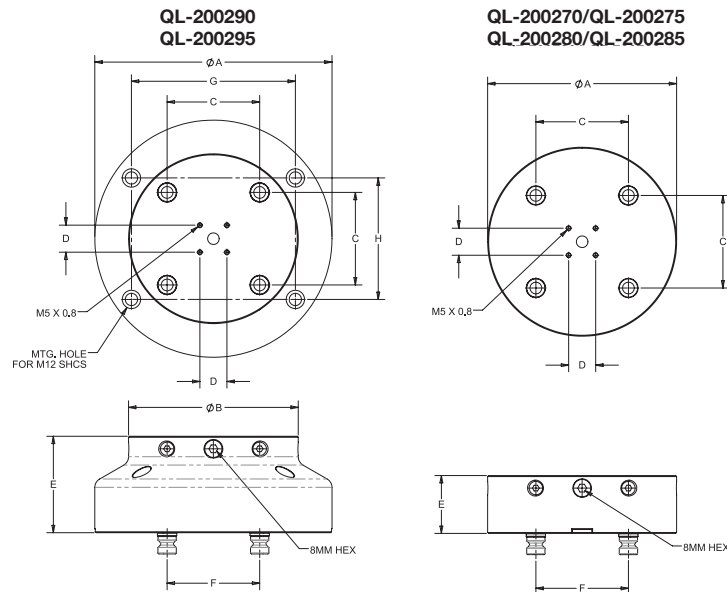


52mm Round Integrated Risers



Part Number	A (mm)	B (mm)	C (mm)	D (mm)	E (mm)	Weight lbs (kg)	Max.Torque ft*lbs (Nm)	Pull Stud
QL-200250	116	52	28	60	52	10.22 (4.64)	22 (30)	QL-200800
QL-200255	116	52	28	100	52	17.41 (7.90)	22 (30)	QL-200800
QL-200260	157	52	28	60	52	19.03 (8.63)	22 (30)	QL-200800
QL-200265	157	52	28	100	52	32.27 (14.64)	22 (30)	QL-200800

96mm Round Integrated Risers



Part Number	A (mm)	B (mm)	C (mm)	D (mm)	E (mm)	F (mm)	G (mm)	H (mm)	Weight lbs (kg)	Max.Torque ft*lbs (Nm)	Pull Stud
QL-200270	176	-	96	28	60	96	-	-	23.91 (10.85)	22 (30)	QL-200805
QL-200275	176	-	96	28	100	96	-	-	40.57 (18.40)	22 (30)	QL-200805
QL-200280	196	-	96	28	60	96	-	-	30.17 (13.68)	22 (30)	QL-200805
QL-200285	196	-	96	28	100	96	-	-	50.85 (23.07)	22 (30)	QL-200805
QL-200290	246	176	96	28	60	96	170	126	31.78 (14.42)	22 (30)	QL-200805
QL-200295	246	176	96	28	100	96	170	126	60.91 (27.63)	22 (30)	QL-200805

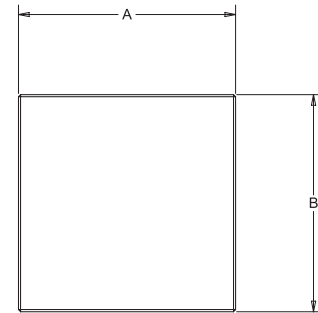
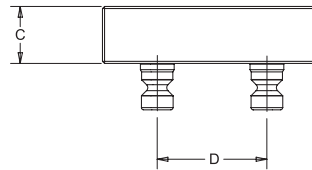
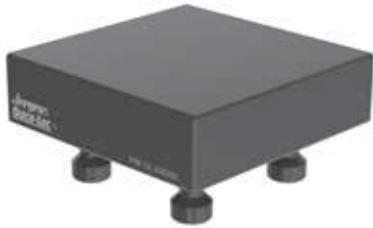


Support Pallets

Support Pallets function as machinable blanks. These are intended to be modified to accept various tooling components and clamping devices. They provide an ideal base for building fixtures that will be mounted with the Quick-Loc™ system. Square and round styles are available.

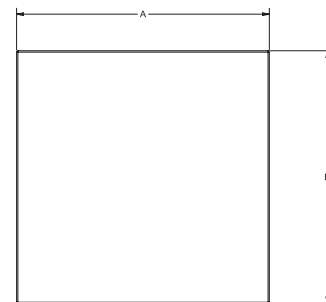
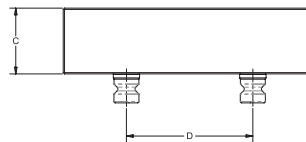
- Material: Low Carbon Steel
- Thickness Tolerance: $\pm .13\text{mm}$
- Pull Studs Included

52mm Square Support Pallets



Part Number	A (mm)	B (mm)	C (mm)	D (mm)	Weight lbs (kg)	Pull Stud
QL-200300	96	96	27	52	4.40 (2.00)	QL-200800
QL-200305	96	96	50	52	8.05 (3.65)	QL-200800
QL-200310	104	104	27	52	5.15 (2.34)	QL-200800
QL-200315	104	104	50	52	9.43 (4.28)	QL-200800
QL-200320	156	156	27	52	11.42 (5.18)	QL-200800
QL-200325	156	156	50	52	21.04 (9.54)	QL-200800

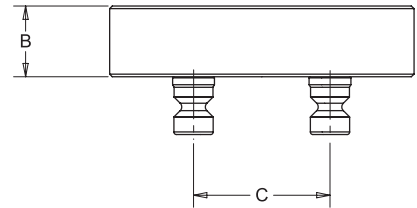
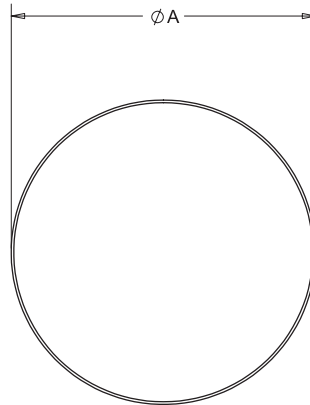
96mm Square Support Pallets



Part Number	A (mm)	B (mm)	C (mm)	D (mm)	Weight lbs (kg)	Pull Stud
QL-200500	156	156	27	96	11.42 (5.18)	QL-200805
QL-200505	156	156	50	96	21.04 (9.54)	QL-200805
QL-200510	192	192	27	96	18.05 (8.19)	QL-200805
QL-200515	192	192	50	96	31.90 (14.47)	QL-200805
QL-200520	246	246	27	96	28.30 (12.84)	QL-200805
QL-200525	246	246	50	96	52.24 (23.70)	QL-200805

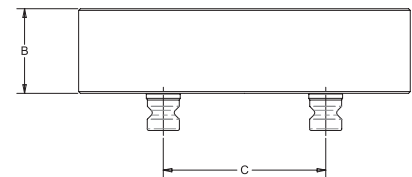
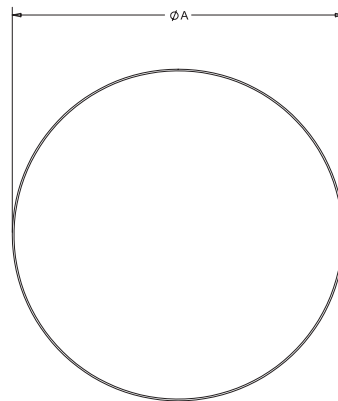


52mm Round Support Pallets



Part Number	A (mm)	B (mm)	C (mm)	Weight lbs (kg)	Pull Stud
QL-200400	116	27	52	4.07 (1.85)	QL-200800
QL-200405	116	50	52	7.43 (3.37)	QL-200800
QL-200410	157	27	52	9.11 (4.13)	QL-200800
QL-200415	157	50	52	16.77 (7.61)	QL-200800

96mm Round Support Pallets



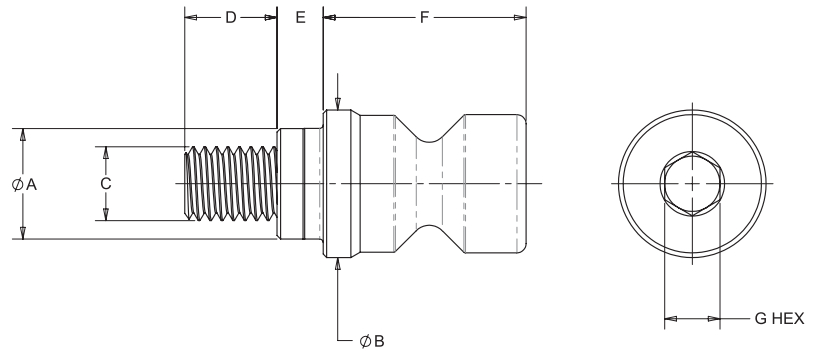
Part Number	A (mm)	B (mm)	C (mm)	Weight lbs (kg)	Pull Stud
QL-200600	157	27	96	9.11 (4.13)	QL-200805
QL-200605	157	50	96	16.77 (7.61)	QL-200805
QL-200610	196	27	96	17.65 (8.01)	QL-200805
QL-200615	196	50	96	33.24 (15.08)	QL-200805
QL-200620	246	27	96	28.30 (12.84)	QL-200805
QL-200625	246	50	96	52.24 (23.70)	QL-200805

QUICK CHANGE FIXTURING » QUICK-LOC™



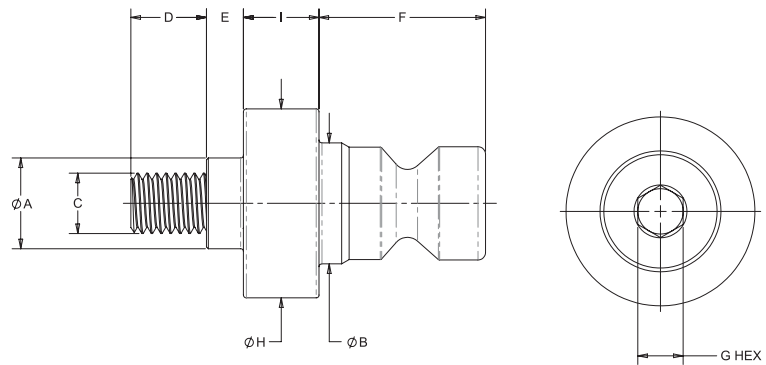
Pull Studs

- Material: A2 Tool Steel
- Heat Treat: Thru Hardened, Rc 50-54
- Finish: Black Oxide



Part Number	A (mm)	B (mm)	C	D (mm)	E (mm)	F (mm)	G (mm)	Weight lbs (kg)
QL-200800	12	16	M8 x 1.25	10	5	22	6	.06 (.03)
QL-200805	16	20	M10 x 1.5	14	5	22	8	.10 (.05)

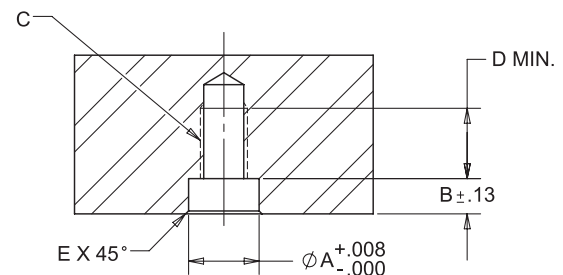
Spacer Studs



Part Number	A (mm)	B (mm)	C	D (mm)	E (mm)	F (mm)	G (mm)	H (mm)	I (mm)	Weight lbs (kg)
QL-200810	12	16	M8 x 1.25	10	5	22	6	25	10	.14 (.06)
QL-200815	16	20	M10 x 1.5	14	5	22	8	29	10	.21 (.10)

Pull Stud Installation Dimensions

Part Number	A (mm)	B (mm)	C	D (mm)	E (mm)
QL-200800 / QL-200810	12	6	M8 x 1.25	12	0.8
QL-200805 / QL-200815	16	6	M10 x 1.5	16	0.8

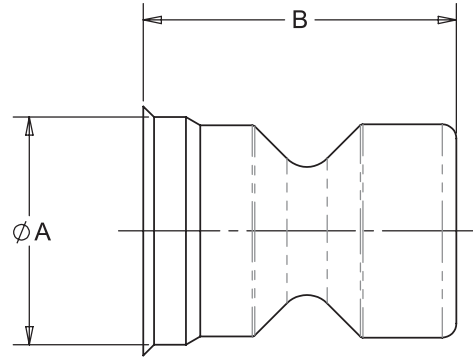


*tolerances in millimeters



Plugs

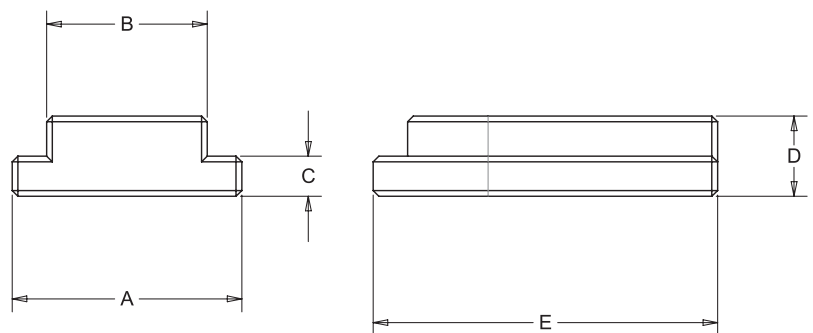
- Protects unused and exposed pull stud holes from filling with contaminants
- Material: Delrin or 6061 Aluminum



Part Number	A (mm)	B (mm)	Material	Weight lbs (kg)
QL-200820	16	22	Plastic	.01 (.005)
QL-200825	20	22	Plastic	.02 (.01)
QL-200830	16	22	Aluminum	.02 (.01)
QL-200835	20	22	Aluminum	.03 (.014)

Keys

- Used for aligning any of the Quick-Loc elements with bottom keyways to the t-slots of a machine table or rotary face.
- Material: Low Carbon Steel
- Heat Treat: Case Hardened, Rc 58-62



Part Number	A (mm)	B (mm)	C (mm)	D (mm)	E (mm)	Weight lbs (kg)
QL-200840	20	14	3.5	7	31	.02 (.01)
QL-200845	20	16	3.5	7	31	.03 (.014)
QL-200850	20	18	3.5	7	31	.03 (.014)
QL-200855	20	20	-	7	31	.04 (.02)

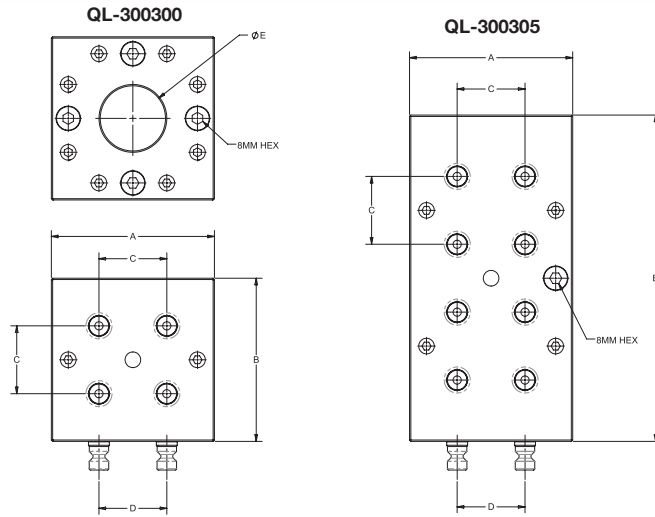
QUICK CHANGE FIXTURING » QUICK-LOC™

Cubes & Twin Bases

Quick-Loc™ Cubes and Twin Bases function like miniature quick change tooling columns. They are well suited for multiple fixture setups as well as 4th axis applications in VMC's. The upright faces feature Quick-Loc™ Receivers built directly into the body of the cube/base. Available with 2, 3, or 4 sides.

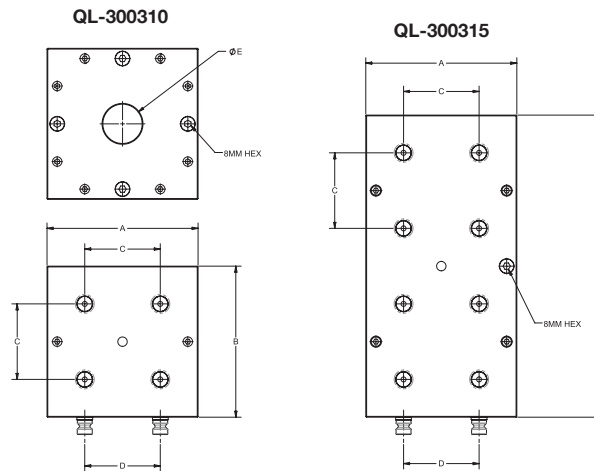
- Material: Alloy Steel
- Heat Treat: Case Hardened, Rc 58-62
- Pull Studs Included

52mm Cubes



Part Number	A (mm)	B (mm)	C (mm)	D (mm)	E (mm)	Weight lbs (kg)	Max. Torque ft*lbs (Nm)	Pull Stud
QL-300300	125	125	52	52	50H7	25.29 (11.47)	22 (30)	QL-200800
QL-300305	125	250	52	52	50H7	50.55 (22.93)	22 (30)	QL-200800

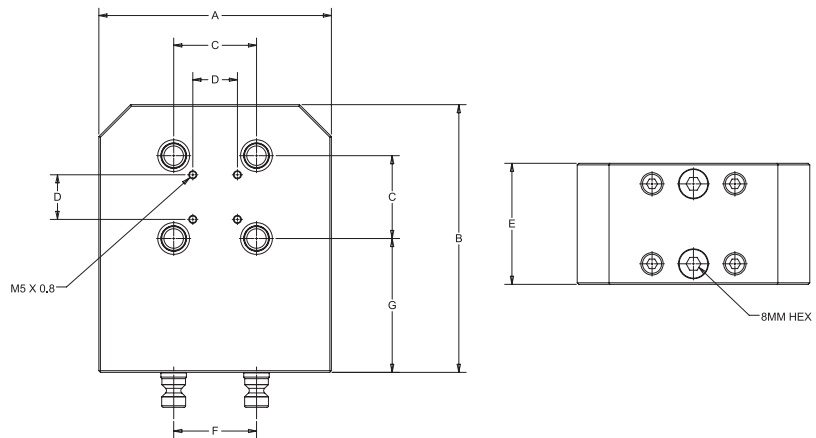
96mm Cubes



Part Number	A (mm)	B (mm)	C (mm)	D (mm)	E (mm)	Weight lbs (kg)	Max. Torque ft*lbs (Nm)	Pull Stud
QL-300310	192	192	96	96	50H7	106.8 (48.4)	22 (30)	QL-200805
QL-300315	192	384	96	96	50H7	216.8 (98.3)	22 (30)	QL-200805

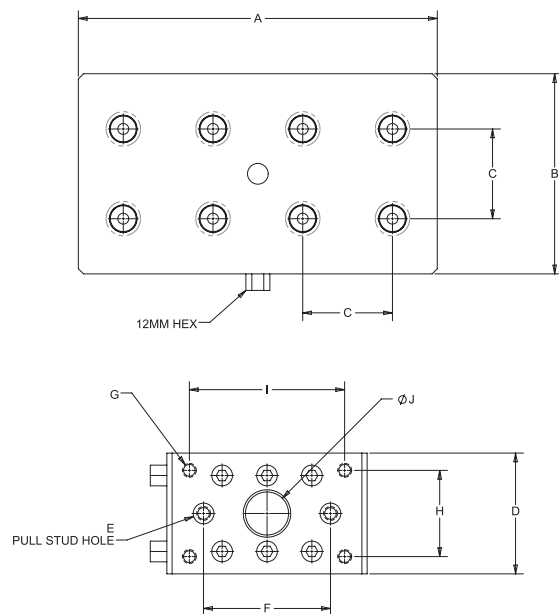


Twin Base



Part Number	A (mm)	B (mm)	C (mm)	D (mm)	E (mm)	F (mm)	G (mm)	Weight lbs (kg)	Max. Torque ft*lbs (Nm)	Pull Stud
QL-400200	144	168	52	28	76	52	84	29.62 (13.44)	22 (30)	QL-200800
QL-400205	190	247	96	28	116	96	110	91.63 (41.56)	22 (30)	QL-200805

Two Sided

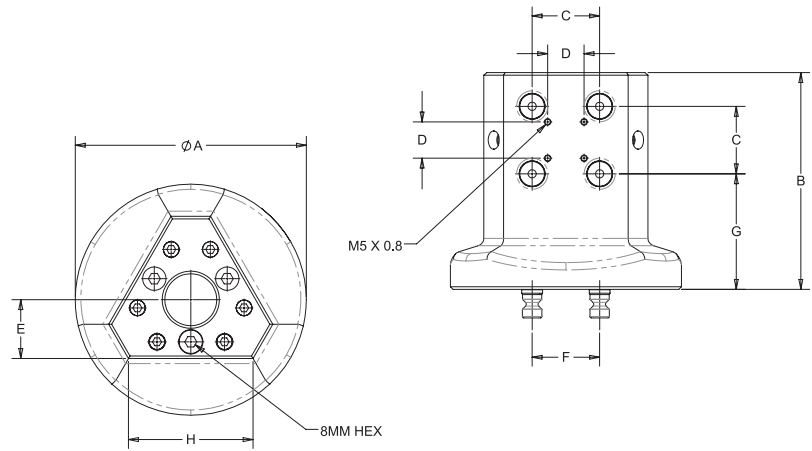


Part Number	A (mm)	B (mm)	C (mm)	D (mm)	E	F (mm)	G (mm)	H (mm)	I (mm)	J (mm)	Weight lbs (kg)	Max. Torque ft*lbs (Nm)	Pull Stud
QL-400210	208	116	52	70	QL-200800	73.538	M8 X 1.25	50	90	25H7	24.77 (11.24)	22 (30)	QL-200800
QL-400215	384	190	96	70	QL-200805	135.765	M10 X 1.5	50	140	25H7	80.76 (36.63)	22 (30)	QL-200805

QUICK CHANGE FIXTURING » QUICK-LOC™



Tri Cube



Part Number	A (mm)	B (mm)	C (mm)	D (mm)	E (mm)	F (mm)	G (mm)	H (mm)	Weight lbs (kg)	Max. Torque ft*lbs (Nm)	Pull Stud
QL-400300	178	167	52	28	45	52	89	96	27.58 (12.51)	22 (30)	QL-200800
QL-400305	247	247	96	28	77	96	110	157	99.32 (45.05)	22 (30)	QL-200805

QUICK CHANGE FIXTURING » QUICK-LOC™

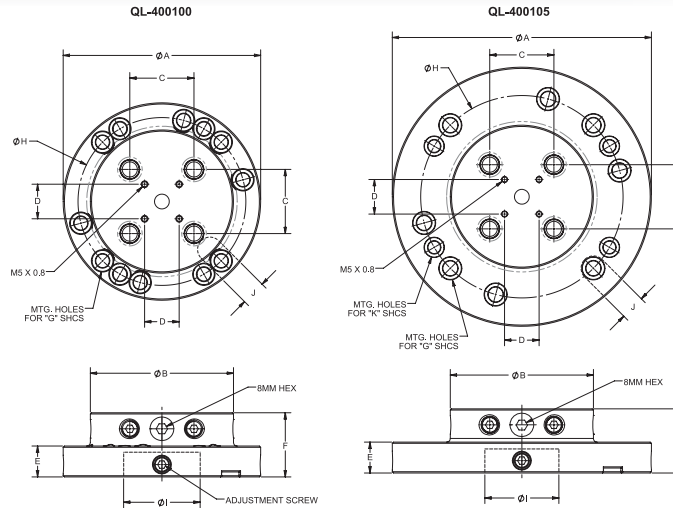


Rotary Receivers

Quick-Loc™ Rotary Receivers provide a quick change platform specifically suited for rotary indexers and 5-axis machines. When mounted on a Zero True Adapter, these receivers can be adjusted to run on center using the side adjustment screws in the base of the receiver.

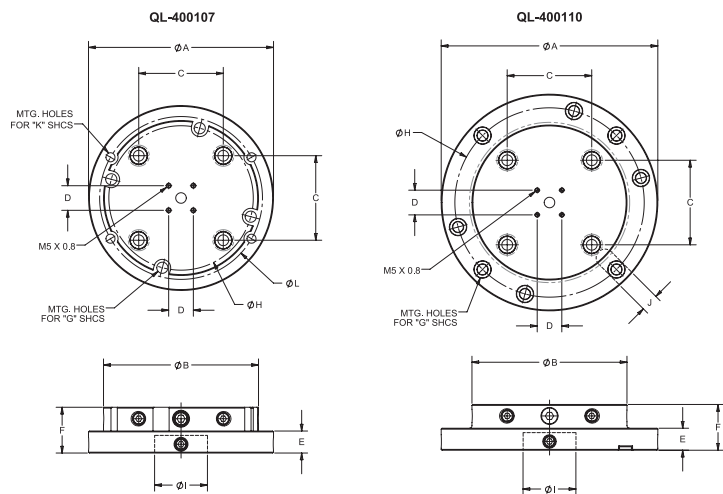
- Material: Alloy Steel
- Heat Treat: Case Hardened

52mm Rotary



Part Number	A (mm)	B (mm)	C (mm)	D (mm)	E (mm)	F (mm)	G	H (mm)	I (mm)	J (mm)	K	Weight lbs (kg)	Max. Torque ft*lbs (Nm)	Pull Stud
QL-400100	160	116	52	28	25	52	M10 or 3/8"	136	60	20	-	11.15 (5.06)	22 (30)	QL-200800
QL-400105	210	116	52	28	25	52	M12	164	60	20	3/8"	16.72 (7.58)	22 (30)	QL-200800

96mm Rotary

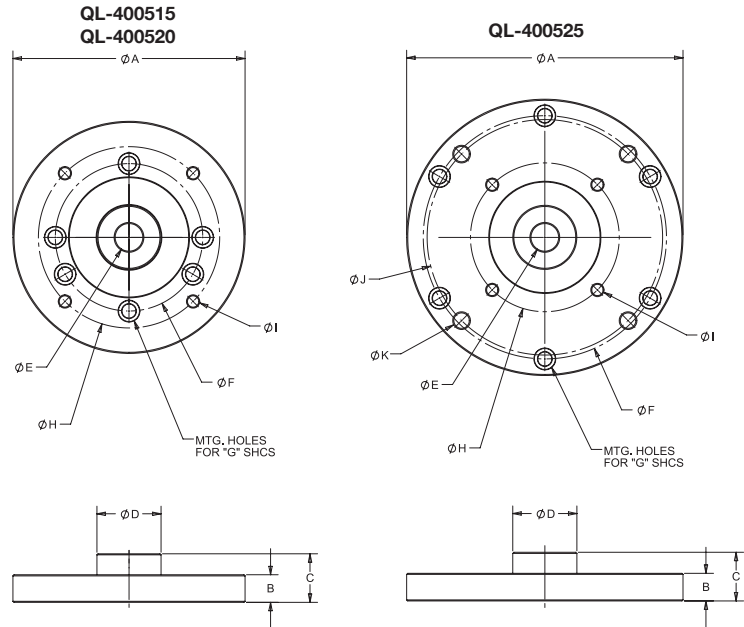


Part Number	A (mm)	B (mm)	C (mm)	D (mm)	E (mm)	F (mm)	G	H (mm)	I (mm)	J (mm)	K	L (mm)	Weight lbs (kg)	Max. Torque ft*lbs (Nm)	Pull Stud
QL-400107	210	176	96	28	25	52	M12	164	60	-	3/8"	185	22.32 (10.58)	22 (30)	QL-200805
QL-400110	246	176	96	28	25	52	M12	215	120	20	-	-	26.12 (11.85)	22 (30)	QL-200805

QUICK CHANGE FIXTURING » QUICK-LOC™



Rotary Zero True Adapters

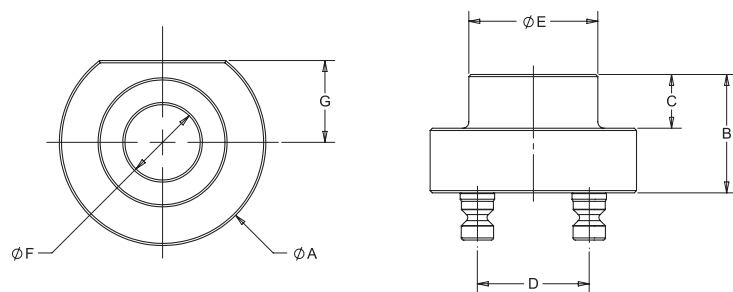
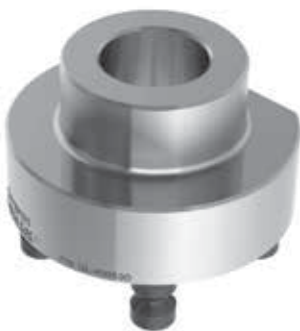


Part Number	A (mm)	B (mm)	C (mm)	D (mm)	E (mm)	F (mm)	G (mm)	H (mm)	I	J (mm)	K	Weight lbs (kg)
QL-400515	160	25	44	58	25	133.4	M12	136	M10 x 1.5	-	-	8.73 (3.96)
QL-400520	210	25	44	58	25	133.4	M12	164	M12 x 1.75	-	-	14.93 (6.77)
QL-400525	250	25	44	58	25	220	M12	164	M12 x 1.75	215	M12 x 1.75	20.12 (9.13)

Alignment Tool

The alignment tool provide accurate datum surfaces for measuring Quick-Loc system setups. These can be used to check critical aspects of a setup such as position or runout.

- Material: Alloy Steel
- Heat Treat: Case Hardened
- Pull Studs Included



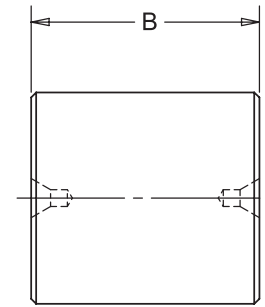
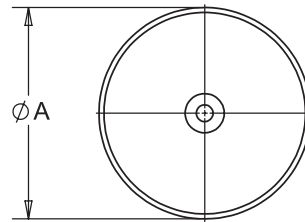
Part Number	A (mm)	B (mm)	C (mm)	D (mm)	E (mm)	F (mm)	G (mm)	Weight lbs (kg)	Pull Stud
QL-400530	96	55	25	52	60	35	38	6.02 (2.73)	QL-200800
QL-400535	160	55	25	96	60	35	64	11.38 (5.16)	QL-200805



Center Locating Pins for Rotary Receivers

- Material: Stressproof®
- Finish: Black Oxide
- Diameter Tolerance
 - Nominal Metric sizes: g5
 - Nominal Inch sizes: -.0004/-.0009"

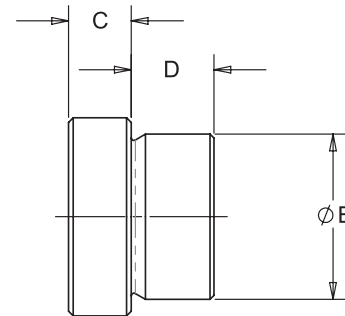
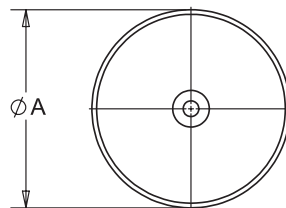
Straight Pin



Part Number	A (mm)	B (mm)	Weight lbs (kg)
QL-488500	60	65	3.14 (1.42)

NOTES

Step Pin



Part Number	A (mm)	B in (mm)	C (mm)	D (mm)	Weight lbs (kg)
QL-488520	60	1.9685 (50)	19	25	1.74 (.79)
QL-488600	60	1.50 (38.1)	19	25	1.39 (.63)
QL-488610	60	2.00 (50.8)	19	25	1.77 (.80)

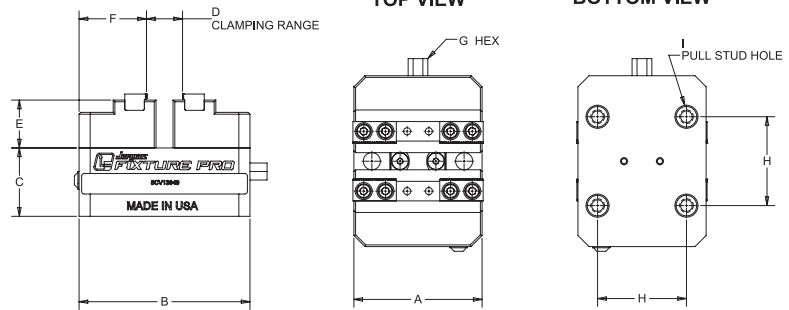


75mm Self-Centering Vise

Clamping Force: 3,500 lbs. at 50 foot lbs.

Vises can be ordered with alternate jaw types by adding one of the following suffixes to a base part number:

- **A** for aluminum soft jaws
- **H** for hardened step jaws
- **S** for steel soft jaws
- **IN** for insert jaws



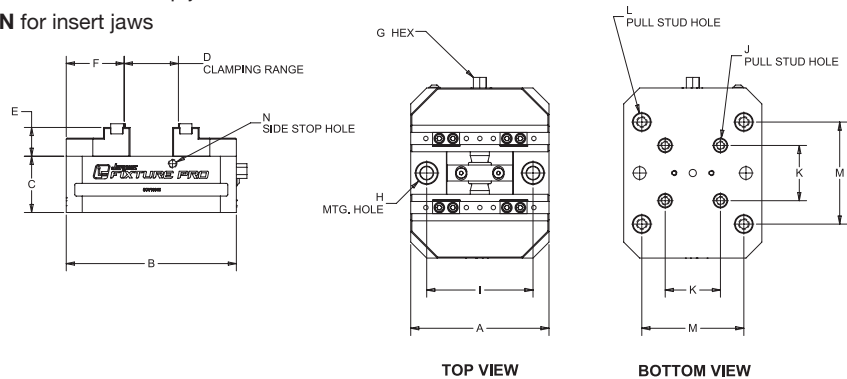
Part Number	A (mm)	B (mm)	C (mm)	D (mm)	E (mm)	F (mm)	G (mm)	H (mm)	I (part no.)	Pull Studs Included	Weight (kg)
5CV13049-IN	75	100	40	12-85	28	39.5	10	52	QL-200800	No	3.1
5CV13050-IN	75	100	40	12-85	28	39.5	10	52	QL-200800	Yes	3.3
5CV13051-IN	75	160	40	12-145	28	39.5	10	52	QL-200800	No	4.0
5CV13052-IN	75	160	40	12-145	28	39.5	10	52	QL-200800	Yes	4.2

130mm Self-Centering Vise

Clamping Force: 3,600 lbs. at 50 foot lbs.

Vises can be ordered with alternate jaw types by adding one of the following suffixes to a base part number:

- **A** for aluminum soft jaws
- **H** for hardened step jaws
- **S** for steel soft jaws
- **IN** for insert jaws



Part Number	A (mm)	B (mm)	C (mm)	D (mm)	E (mm)	F (mm)	G (mm)	H	I (mm)	J (part no.)	K (mm)	L (part no.)	M (mm)	Pull Studs Included	N	Weight (kg)
5CV13041-IN	130	160	53	12-150	27	54	12	12mm QLS	100	QL-200800	52	QL-200805	96	No	M8 X 1.25	7.4
5CV13042-IN	130	160	53	12-150	27	54	12	12mm QLS	100	QL-200800	52	QL-200805	96	Yes (QL-200805)	M8 X 1.25	7.7
5CV13045-IN	130	250	53	12-240	27	54	12	12mm QLS	100	QL-200800	52	QL-200805	96	No	M8 X 1.25	10.2
5CV13046-IN	130	250	53	12-240	27	54	12	12mm QLS	100	QL-200800	52	QL-200805	96	Yes (QL-200805)	M8 X 1.25	10.5

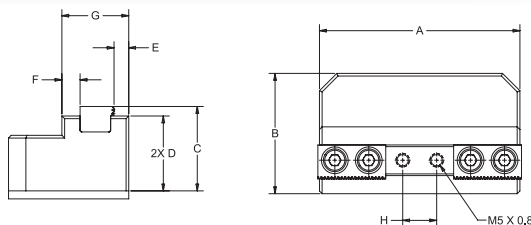


Vise Jaws & Accessories

Insert Jaw Sets for 75mm Vise

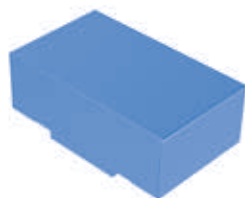


- Includes Serrated Inserts
- Alloy Steel Jaw, Thru Hardened
- Alternate Insert Styles Available
- Set Includes 2 Jaws

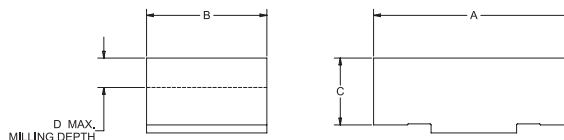


Part Number	A (mm)	B (mm)	C (mm)	D (mm)	E (mm)	F (mm)	G (mm)	H (mm)
5CV13049-INSJ	75	45	31.6	28	5.5	6.7	25	12.7
5CV13049-INSJ-L	75	45	25.6	22	5.5	6.7	25	12.7

Soft Jaw Sets for 75mm Vise



- High Strength Aluminum with Blue Anodize Finish or Low Carbon Steel with Black Oxide Finish
- Set Includes 2 Jaws

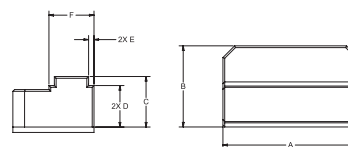


Part Number	A (mm)	B (mm)	C (mm)	D (mm)	Material
5CV13049-ASJ	75	45	25	11	Aluminum
5CV13049-ASJ-50	75	45	50	36	Aluminum
5CV13049-SSJ	75	45	25	11	Steel
5CV13049-SSJ-50	75	45	50	36	Steel

Step Jaw Set for 75mm Vise



- Alloy Steel, Thru Hardened, Black Oxide Finish
- Set Includes 2 Jaws



Part Number	A (mm)	B (mm)	C (mm)	D (mm)	E (mm)	F (mm)
5CV13049-HSJ	75	45	28	23	3	25

Insert Options



Serrated

Part Number	Lg. (mm)
5JISER.5	12.7
5JISER1.0	25.4
5JISER1.5	38.1



Peak

Part Number	Lg. (mm)
5JIDPK.5	12.7
5JIDPK1.0	25.4
5JIDPK1.5	38.1



Scalloped

Part Number	Lg. (mm)
5JISCA.5	12.7
5JISCA1.0	25.4
5JISCA1.5	38.1



Dovetail

Part Number	Lg. (mm)	Angle
5JIDOV.5	12.7	10°
5JIDOV1.0	25.4	10°
5JIDOV1.5	38.1	10°
5JIDOV30.5	12.7	30°
5JIDOV301.0	25.4	30°
5JIDOV301.5	38.1	30°

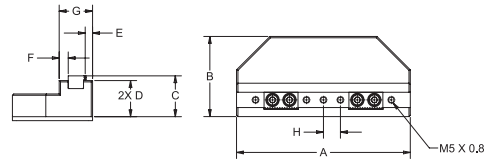


Vise Jaws & Accessories

Insert Jaw Sets for 130mm Vise

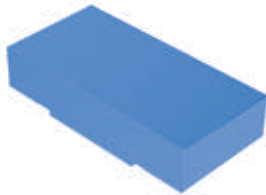


- Includes Serrated Inserts
- Alloy Steel Jaw, Thru Hardened
- Alternate Insert Styles Available, see page 29
- Set Includes 2 Jaws

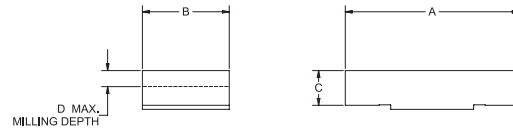


Part Number	A (mm)	B (mm)	C (mm)	D (mm)	E (mm)	F (mm)	G (mm)	H (mm)
5CV13041-INSJ	130	60	30	27	5.5	6.7	25	12.7
5CV13041-INSJ-L	130	60	36	33	5.5	6.7	25	12.7

Soft Jaw Sets for 130mm Vise



- High Strength Aluminum with Blue Anodize Finish or Low Carbon Steel with Black Oxide Finish
- Set Includes 2 Jaws

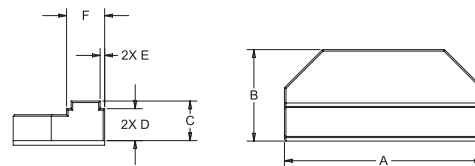


Part Number	A (mm)	B (mm)	C (mm)	D (mm)	Material
5CV13041-ASJ	130	65	26	12	Aluminum
5CV13041-ASJ-50	130	65	50	36	Aluminum
5CV13041-SSJ	130	65	26	12	Steel
5CV13041-SSJ-50	130	65	50	36	Steel

Step Jaw Set for 130mm Vise



- Alloy Steel, Thru Hardened, Black Oxide Finish
- Set Includes 2 Jaws

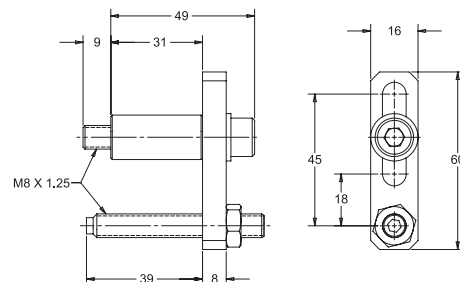


Part Number	A (mm)	B (mm)	C (mm)	D (mm)	E (mm)	F (mm)
5CV13041-HSJ	130	60	26	21	3	25

Workstop for 130mm Vise



Part Number
5CV13041-WST





WHAT'S YOUR NEXT CHALLENGE?



QUICK CHANGE FIXTURING » QUICK-LOC™

Jergens Custom Design and Build Workholding

Jergens' custom design and build expertise will take your fixturing needs to the next level, gaining efficiencies from the shop floor. We start with industry-proven standard and custom products to create a solution that is "unique to you." Your next challenge is Jergens' next accomplishment.



Jergens®

MANUFACTURING EFFICIENCY

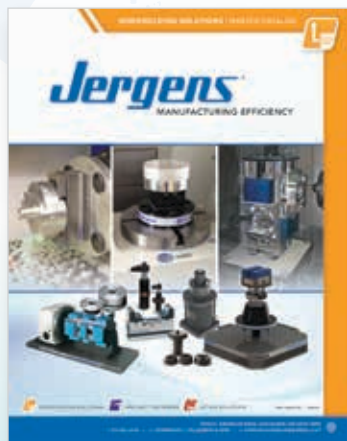
WORLD HEADQUARTERS

15700 S. WATERLOO ROAD
CLEVELAND, OH 44110-3898

 877.426.2504

 JERGENSINC.COM/WORKHOLDING

 WORKHOLDING@JERGENSINC.COM



ALSO AVAILABLE:

WORKHOLDING SOLUTIONS CATALOG
REQUEST A COPY OR DOWNLOAD AT JERGENSINC.COM

