

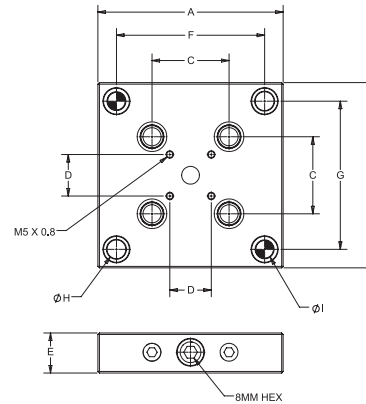


Receivers

Quick Loc™ Receivers provide a platform for fast and accurate mounting of fixtures and workpieces. Square, rectangular, and round styles are available. Units without mounting holes allow users to add their own custom mounting configuration.

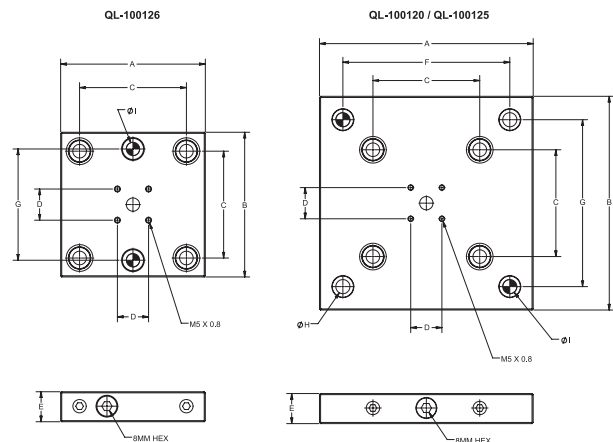
- Material: Alloy Steel
- Heat Treat: Case Hardened, Rc 58-62
- Thickness Tolerance: ±.01mm
- Available with or without mounting holes

52mm Square Receivers



Part Number	A (mm)	B (mm)	C (mm)	D (mm)	E (mm)	Mounting Holes	F (mm)	G (mm)	H (mm)	I (mm)	Weight lbs (kg)	Max. Torque ft*lbs (Nm)	Pull Stud	Fixture-Pro Compatible
QL-100100	104	104	52	28	27	No	-	-	-	-	4.38 (1.99)	22 (30)	QL-200800	-
QL-100105	104	104	52	28	27	Yes	82	82	12.7	12H7	3.97 (1.80)	22 (30)	QL-200800	-
QL-100110	125	125	52	28	27	No	-	-	-	-	6.46 (2.93)	22 (30)	QL-200800	-
QL-100115	125	125	52	28	27	Yes	100	100	12.7	12H7	6.12 (2.78)	22 (30)	QL-200800	✓ (c)

96mm Square Receivers



Part Number	A (mm)	B (mm)	C (mm)	D (mm)	E (mm)	Mounting Holes	F (mm)	G (mm)	H (mm)	I (mm)	Weight lbs (kg)	Max. Torque ft*lbs (Nm)	Pull Stud	Fixture-Pro Compatible
QL-100120	192	192	96	28	27	No	-	-	-	-	15.81 (7.17)	22 (30)	QL-200805	-
QL-100125	192	192	96	28	27	Yes	150	150	12.7	12H7	15.44 (7.00)	22 (30)	QL-200805	✓
QL-100126	130	130	96	28	27	Yes	-	100	-	12H7	6.95 (3.15)	22 (30)	QL-200805	✓ (c)

✓ - Receiver will mount to 50mm QLS grid offset from center | ✓ (c) - Receiver will mount to 50mm QLS grid and be centered on grid.

QUICK CHANGE FIXTURING » QUICK-LOC™