

**MAZAK**

Quick turn (QT) 200, 250 M/MY/MS/MSY

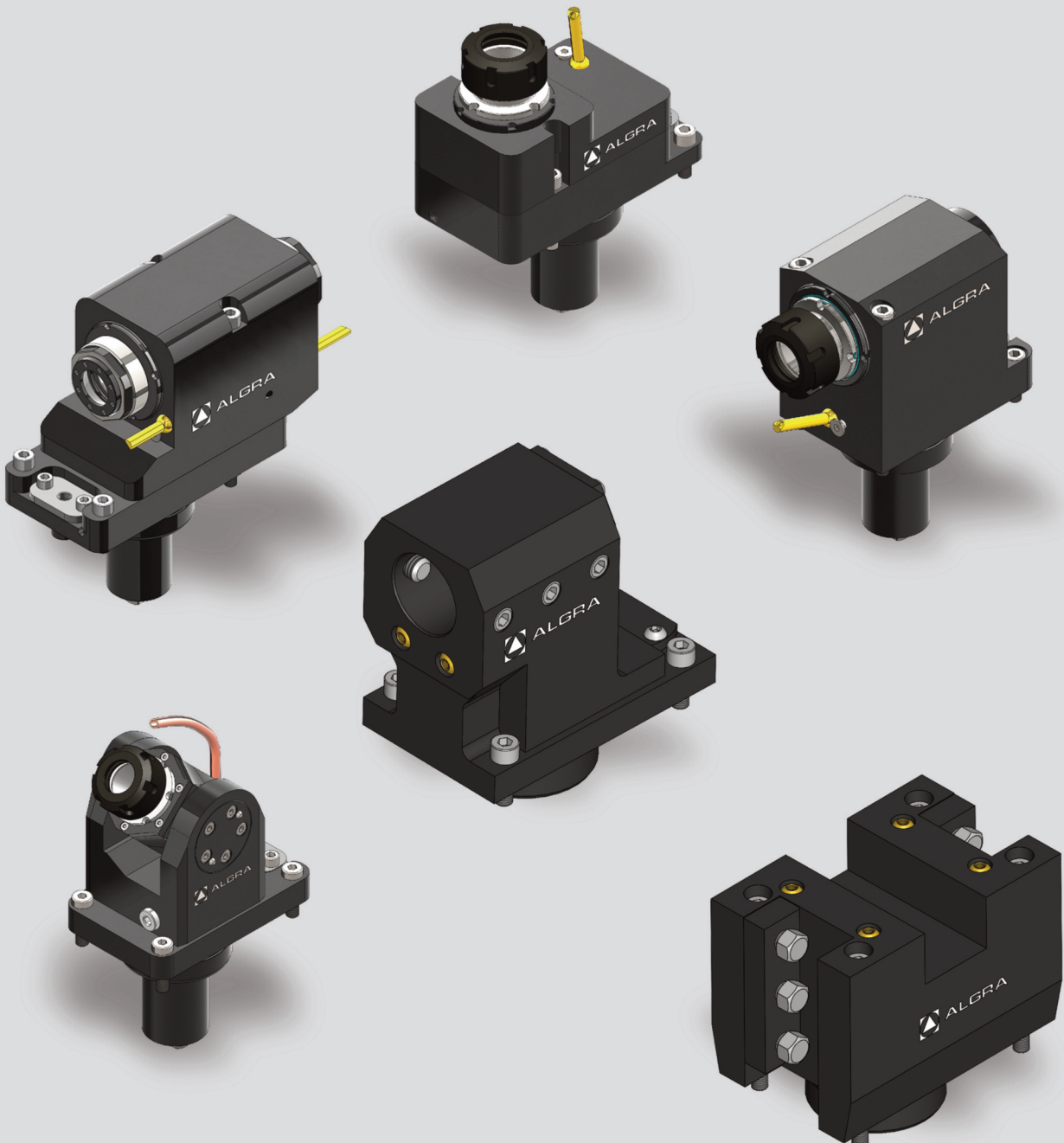
Quick turn Compact (QTC) 100, 200, 300 M/MY/MS/MSY

Quick turn Smart (QTS) 100, 150, 200, 250 M/MS

Quick turn Universal (QTU) 200, 250, 350 MY/MSY

Toolholder Program

S68



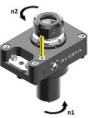





**MAZAK**

Quick turn (QT) 200, 250 M/MY/MS/MSY

Quick turn Compact (QTC) 100, 200, 300 M/MY/MS/MSY

Quick turn Smart (QTS) 100, 150, 200, 250 M/MS

Quick turn Universal (QTU) 200, 250, 350 MY/MSY

S68	Version	Tools Clamping	Center Height	Max. speed	Ratio	External	Internal	Page
	0°	ER32 - DIN6499		6000rpm	i=1:1	RAPPS 32 121US68	RAPPS 32 131US68	4
	0° Offset	ER32 - DIN6499		6000rpm	i=1:1	RAPPD 32 121US68/50	RAPPD 32 131US68/50	5
	90°	ER32 - DIN6499	80mm	6000rpm	i=1:1	RRPPS 32 121US68	RRPPS 32 131US68	6
	90° Offset	ER32 - DIN6499	85mm	6000rpm	i=1:1	RRPPA 32 321RS68	RRPPA 32 331RS68	7
	90° Double Offset	ER32 - DIN6499	85mm	6000rpm	i=1:1	RRPPTA 32 321US68		8
	±90°	ER25 - DIN6499		6000rpm	i=1:1	ROPPS 25 121US68	ROPPS 25 131US68	9

**MAZAK**

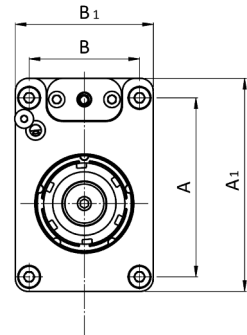
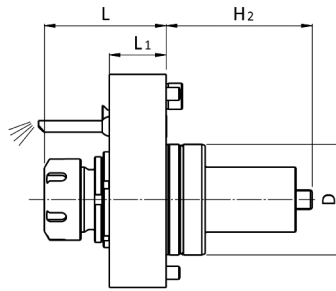
Quick turn (QT) 200, 250 M/MY/MS/MSY


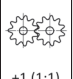

Quick turn Compact (QTC) 100, 200, 300 M/MY/MS/MSY

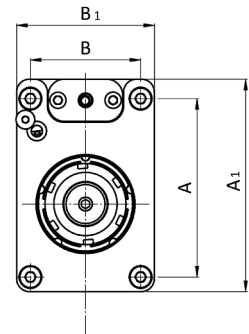
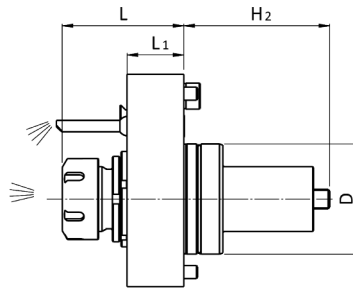
Quick turn Smart (QTS) 100, 150, 200, 250 M/MS

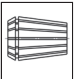
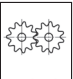



Quick turn Universal (QTU) 200, 250, 350 MY/MSY

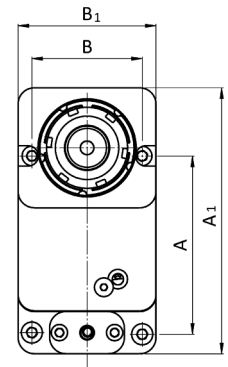
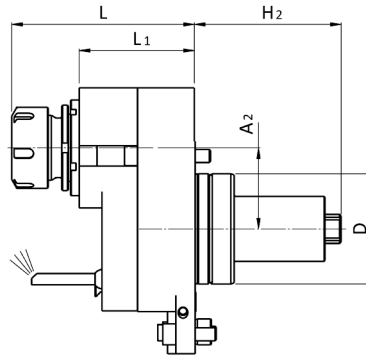
S68	Version	Tools Clamping	Center Height	Coolant	ALGRA Part. No.	Page
	O.D. cutting holder	□ 25 mm	H:75 mm	External	E10/U 25 S68X75	10
		□ 1"	H:75 mm	External	E10/U 1" S68X75	10
	O.D. double holder	□ 25 mm	H:100 mm	External	E10/UD 25 S68X100	10
		□ 1"	H:100 mm	External	E10/UD 1" S68X100	10
	Face and I.D. cutting holder	□ 25 mm	H:100 mm	External	E10/UA 25 S68X100	11
		□ 1"	H:100 mm	External	E10/UA 1" S68X100	11
	Blade Holder	∅ 32 mm	H:86 mm	External	E10/TT 32 S68X86	11
	Boring Bar holder	∅ 40 mm	H:95 mm	Internal/External	E10/B 40 S68X95	12
		∅ 1.5"	H:95 mm	Internal/External	E10/B 1.5" S68X95	12






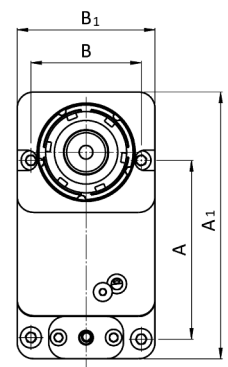
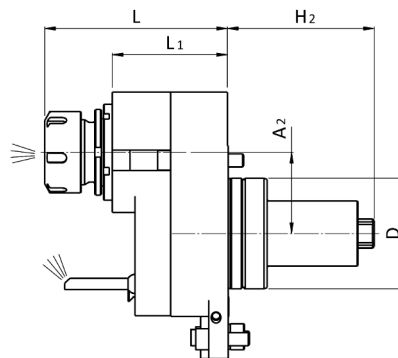
1/S68			Codice	D	ER	H	H1	H2	H3	L	L1	L2	A	B	A1	B1	A2	B2	M <sub>2</sub>	n <sub>2</sub>	P	
			code - code - Bestell Nr.							(min-max)									Nm	min-1	kW	
0°			RAPPS 32 121US68	68	32			90		75	35		110	68	131	85						
 EXTERNAL																						




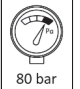



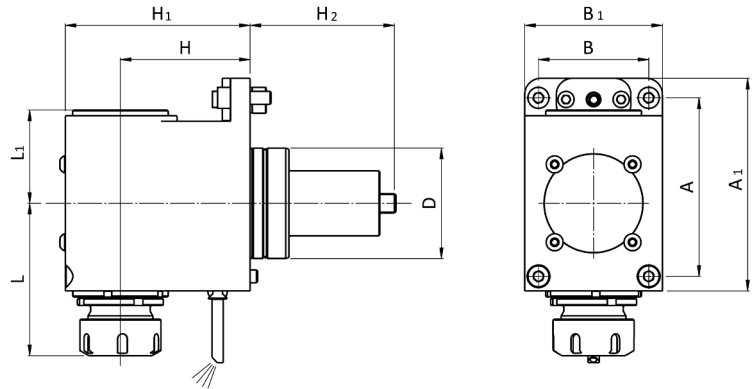
2/S68			Codice	D	ER	H	H1	H2	H3	L	L1	L2	A	B	A1	B1	A2	B2	M <sub>2</sub>	n <sub>2</sub>	P	
			code - code - Bestell Nr.							(min-max)									Nm	min-1	kW	
0°			RAPPS 32 131US68	68	32			90		75	35		110	68	131	85						
 INT./EXT.																						
 80 bar																						
 Filtration 30µm																						



3/S68			Codice	D	ER	H	H1	H2	H3	L	L1	L2	A	B	A1	B1	A2	B2	M <sub>2</sub>	n <sub>2</sub>	P	
			code - code - Bestell Nr.							(min-max)									Nm	min-1	kW/	
0°			RAPPD 32 121US68/50	68	32			90		113,5	71,5		110	68	164	85						
 EXTERNAL																						




4/S68			Codice	D	ER	H	H1	H2	H3	L	L1	L2	A	B	A1	B1	A2	B2	M <sub>2</sub>	n <sub>2</sub>	P	
			code - code - Bestell Nr.							(min-max)									Nm	min-1	kW	
0°			RAPPD 32 131US68/50	68	32			90		113,5	71,5		110	68	164	85						
 INT./EXT.																						
 80 bar																						
 Filtration 30µm																						




5/S68			Codice	D	ER	H	H1	H2	H3	L	L1	L2	A	B	A1	B1	A2	B2	M <sub>2</sub>	n <sub>2</sub>	P
			code - code - Bestell Nr.							(min-max)									Nm	min-1	kW
			RRPPS 32 121US68	68	32	80	114	90		94	57,5		110	68	131	85					


90°



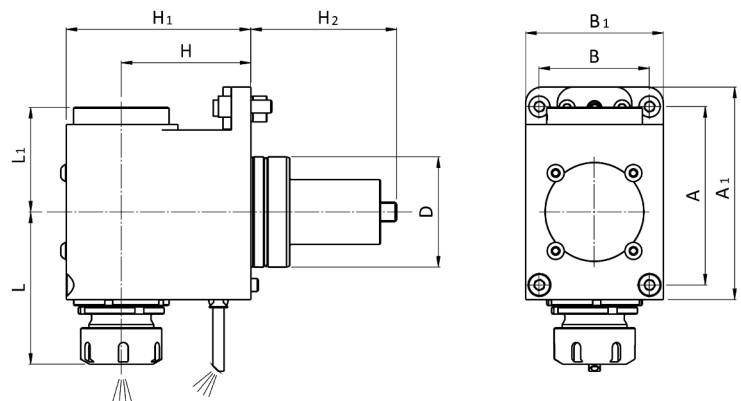
DIN 6499



-1 (1:1)

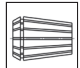


EXTERNAL

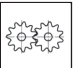


6/S68			Codice	D	ER	H	H1	H2	H3	L	L1	L2	A	B	A1	B1	A2	B2	M <sub>2</sub>	n <sub>2</sub>	P
			code - code - Bestell Nr.							(min-max)									Nm	min-1	kW
			RRPPS 32 131US68	68	32	80	114	90		94	64		110	68	131	85					

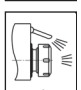
90°




DIN 6499




-1 (1:1)



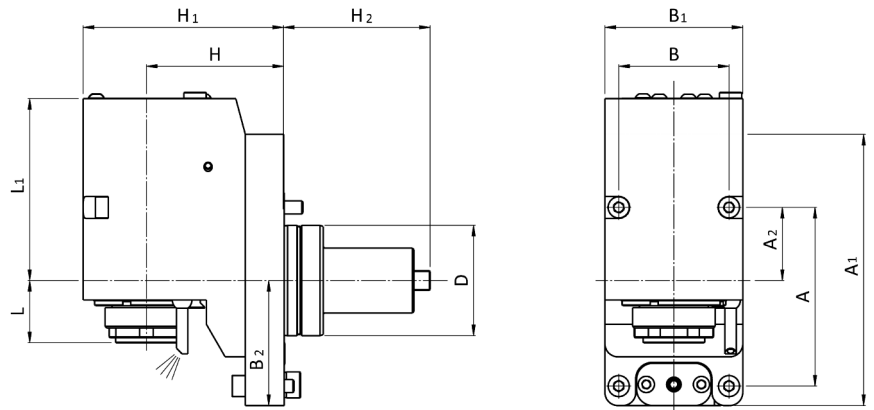
INT./EXT.

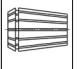




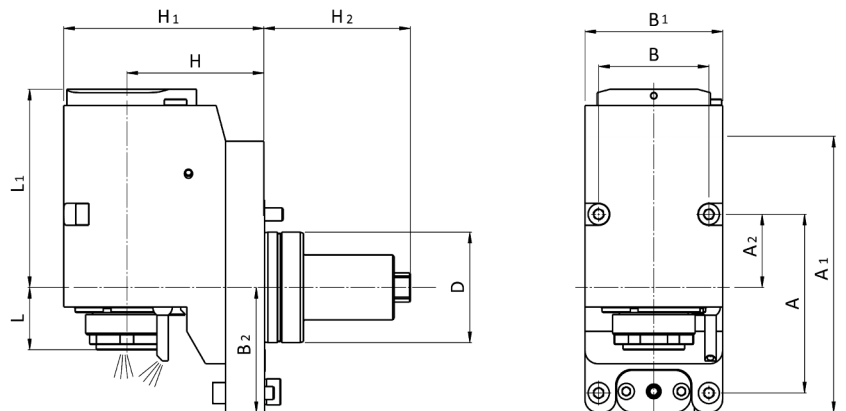
80 bar




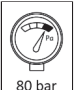



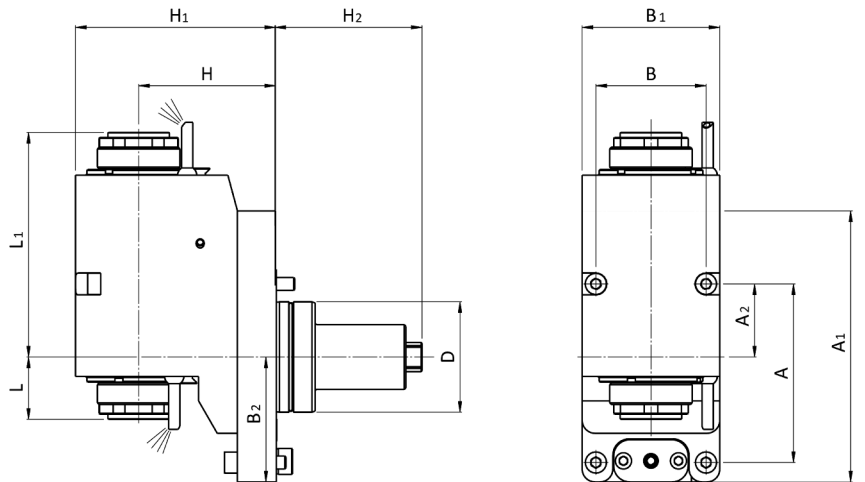
Filtration  
30µm



7/S68			Codice	D	ER	H	H1	H2	H3	L	L1	L2	A	B	A1	B1	A2	B2	M <sub>2</sub>	n <sub>2</sub>	P
			code - code - Bestell Nr.							(min-max)									Nm	min-1	kW
			RRPPA 32 321RS68	68	32	85	124	90		38,5	102,5		110	68	167	85	45	77			
90°																					
	DIN 6499	-1 (1:1)																			
																					
EXTERNAL																					

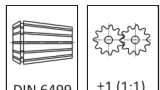


8/S68			Codice	D	ER	H	H1	H2	H3	L	L1	L2	A	B	A1	B1	A2	B2	M <sub>2</sub>	n <sub>2</sub>	P
			code - code - Bestell Nr.							(min-max)									Nm	min-1	kW
			RRPPA 32 331RS68	68	32	85	124	90		38,5	122		110	68	167	85	45	77			
90°																					
	DIN 6499	-1 (1:1)																			
																					
INT./EXT.	80 bar	Filtration 30µm																			




9/S68		Codice code - code - Bestell Nr.	D	ER	H	H1	H2	H3	L (min-max)	L1	L2	A	B	A1	B1	A2	B2	M <sub>2</sub> Nm	n <sub>2</sub> min-1	P kW
RRPPTA 32 321US68			68	32	85	124	90		38,5	138,5		110	68	167	85	45	77			

90°

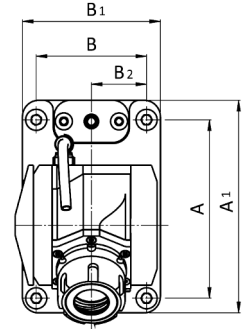
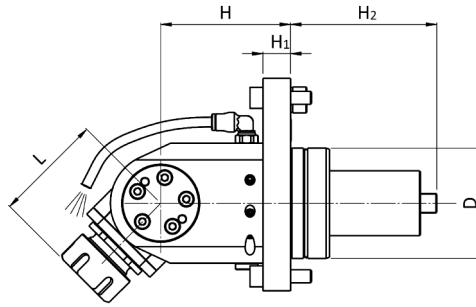





DIN 6499  
±1 (1:1)

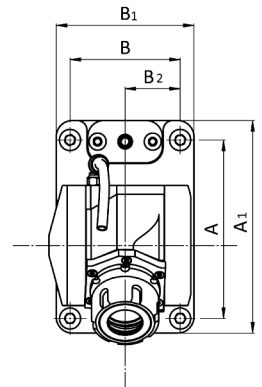
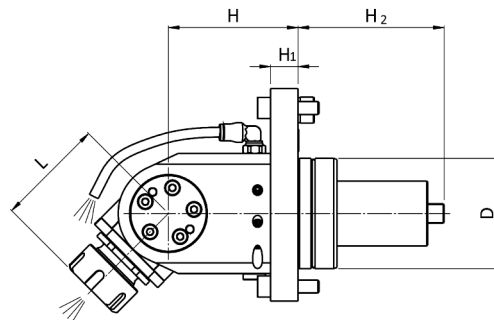







EXTERNAL

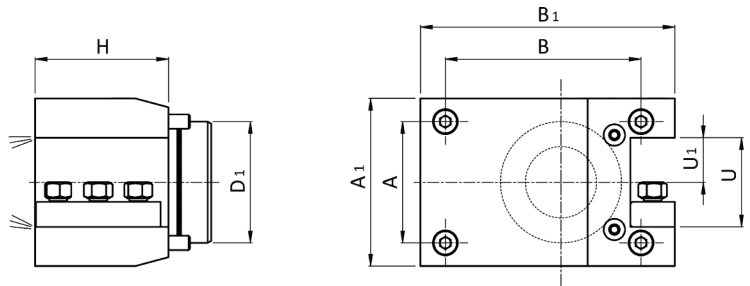


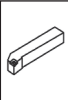
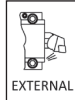


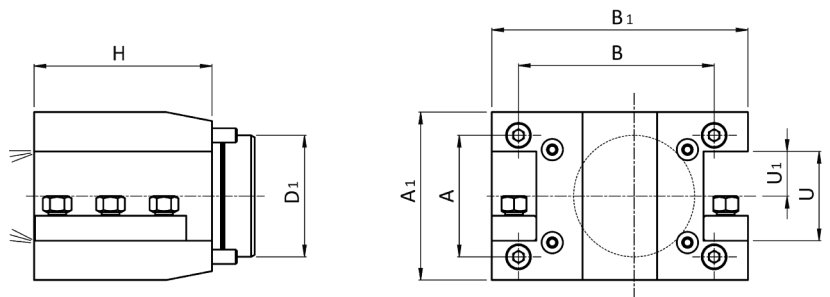
10/S68		Codice code - code - Bestell Nr.	D	ER	H	H1	H2	H3	L (min-max)	L1	L2	A	B	A1	B1	A2	B2	M <sub>2</sub> Nm	n <sub>2</sub> min-1	P kW	
±90°	 DIN 6499	 +1 (1:1)	68	25	80	17	90		67,5			110	68	131	85	34					
 EXTERNAL																					

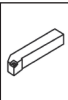
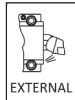


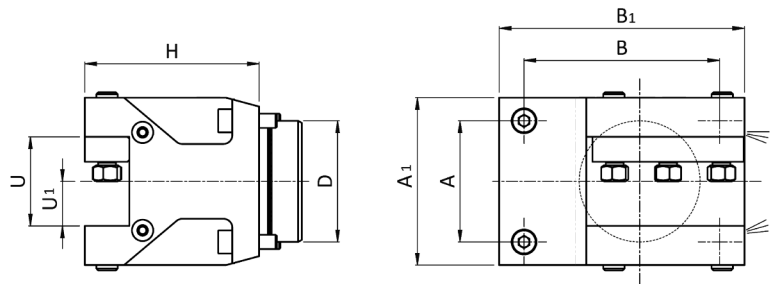
11/S68		Codice code - code - Bestell Nr.	D	ER	H	H1	H2	H3	L (min-max)	L1	L2	A	B	A1	B1	A2	B2	M <sub>2</sub> Nm	n <sub>2</sub> min-1	P kW	
±90°	 DIN 6499	 +1 (1:1)	68	25	80	17	90		67,5			110	68	131	85	34					
 INT./EXT.	 80 bar	 Filtration 30µm																			

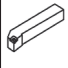



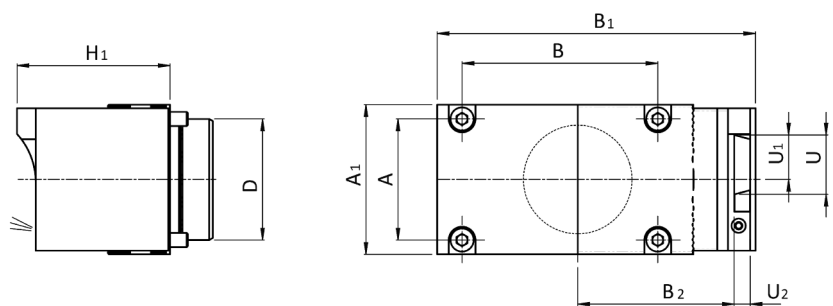
101/S68		Codice code - code - Bestell Nr.	D	U	U1	U2	H	H1	H2	H3	A	B	A1	B1	A2	B2	B3
 		<b>E10/U 25 S68X75</b>	68	50	25		75				68	110	94	143			
		<b>E10/U 1" S68X75</b>	68	2"	1"		75					68	110	94	143		


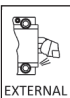


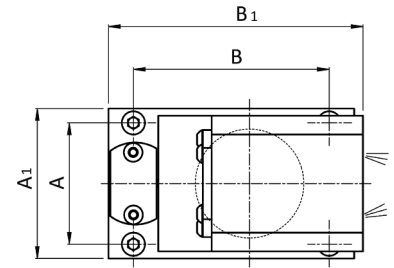
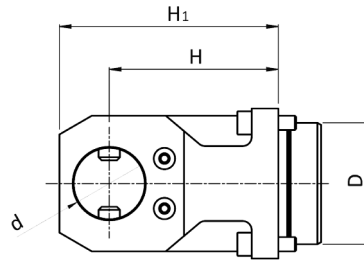
102/S68		Codice code - code - Bestell Nr.	D	U	U1	U2	H	H1	H2	H3	A	B	A1	B1	A2	B2	B3
 		<b>E10/UD 25 S68X100</b>	68	50	25		100				68	110	94	144			
		<b>E10/UD 1" S68X100</b>	68	2"	1"		100					68	110	94	144		





103/S68		Codice code - code - Bestell Nr.	D	U	U1	U2	H	H1	H2	H3	A	B	A1	B1	A2	B2	B3
  EXTERNAL	E10/UA 25 S68X100		68	50	25		98				68	110	94	138			
	E10/UA 1" S68X100		68	2"	1"		98				68	110	94	138			



104/S68		Codice code - code - Bestell Nr.	D	U	U1	U2	H	H1	H2	H3	A	B	A1	B1	A2	B2	B3
  EXTERNAL	E10/TT 32 S68X86		68	32	25	9		86			68	110	84	179		88	



105/S68		Codice	D	d	d1	d2	H	H1	H2	H3	A	B	A1	B1	A2	B2	B3
		code - code - Bestell Nr.															
  EXTERNAL	E10/B 40 S68X95	68	40			95	123				68	110	84	138			
	E10/B 1.5" S68X95	68	1.5"			95	123				68	110	84	138			





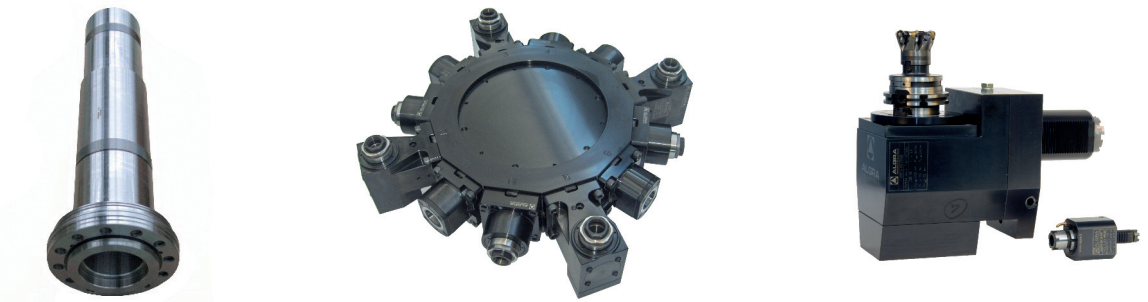
**La produzione:  
il lavoro**Production:  
work

La produzione viene sviluppata nella moderna struttura a temperatura controllata di Almenno San Salvatore, mentre negli stabilimenti di Brembilla (I-Bergamo) vengono effettuate le lavorazioni di montaggio ed assemblaggio di gruppi completi. La superficie coperta delle strutture è di mq. 15.000, dei quali mq. 1.000 sono adibiti agli uffici amministrativi, commerciali e tecnici. L'attività produttiva si svolge con l'utilizzo di impianti e macchinari CNC costantemente aggiornati alle nuove tecnologie ed in grado di sviluppare le seguenti lavorazioni:

- Asportazione di truciolo
- Elettroerosione
- Tornitura orizzontale e verticale
- Fresatura universale 5 assi
- Fresatura/tornitura
- Lappatura per fori e piani
- Rettifica in tondo interno ed esterno
- Rettifica in tangenziale oltre al montaggio di gruppi e sottogruppi completi.

*The production is developed in the modern, temperature controlled facility in Almenno San Salvatore, with Brembilla factories there are the assembly operations and the assembly of complete groups. The facilities covered area is of 15,000 sqm., 1,000 sqm. of which are used for the administrative commercial and technical offices. The production cycle takes place with the use of CNC fixtures and equipment constantly updated with new technologies and able to develop the following machining:*

- Chip machining
- Electroerosion
- Horizontal and vertical turning
- 5-axis universal milling
- Milling/turning
- Lapping for holes and plane surfaces
- Cylindrical internal and external grinding
- Tangential grinding in addition to the assembly of complete groups and subassemblies.

**Certificazioni:  
uno standard  
qualitativo**Certification:  
a quality  
standard

La tecnologia avanzata svolge un ruolo chiave nell'obiettivo di incrementare il proprio valore, quello dei propri prodotti, dei servizi e della capacità del personale, operando nel rispetto delle norme UNI EN ISO 9001:2008 e ISO 14001:2004. L'alto livello di sensibilità verso il rispetto delle regole di sicurezza e dell'ambiente è presente ed immediatamente percepito in tutte le strutture aziendali.

*Advanced technology plays a key role aiming to increase its value and the products, services and staff capacity value, operating in compliance with UNI EN ISO 9001:2008 and ISO 14001:2004.*

*The high level of sensitivity towards the observance of safety rules and the environment is present and perceived immediately in all facilities.*



UNI EN ISO 9001:2008 - Cert. n° 0141



UNI EN ISO 14001:2004 - Cert. n° 0270A

## Our partners:

### AUSTRALIA

**MODERN TOOLS (VIC.) PTY LTD**  
2/2 Newcastle Rd  
Bayswater, Australia, VIC 3153  
Phone: +61 03 9761 2929

---

### BENELUX

**BUCCI INDUSTRIES BENELUX**  
Alée Verte 12, B-5150 Floreffe (Belgium)  
Phone: +32 81352099

---

### BRASIL

**BUCCI INDUSTRIES BRASIL**  
R. Dr. Augusto De Miranda, 910  
Vila Pompeia, São Paulo,  
Brasile, SP, 05026-000  
Phone: +55 19 3515 7220

---

### BULGARIA

**RAIS LTD**  
Пловдив, Бул. Освобождение 3, Ет. 3,  
Plovdiv, Bulgaria, 4019  
Phone: +359 34444255

---

### CHINA

**SHANGHAI LUOTUO  
AUTOMATION TECHNOLOGY CO**  
NORTH GUYANG ROAD,  
SONGJIANG DISTRICT  
SHANGHAI, Cina, 201620  
Phone: +86 2164120150

---

### CZECH REPUBLIC

**MACH TRADE S.R.O.**  
Radiová 1431/2a  
Praha, Repubblica Ceca, 102 00  
Phone: +420 603293270

---

### FRANCE

**BUCCI INDUSTRIES FRANCE SARL**  
145 Rue Louis Armand  
Cluses, Francia, 74300  
Phone: +32 81450282

---

### GERMANY

**ITAL TECH SERVICE GMBH**  
Am Langenberg 13  
Ingelheim Am Rhein, Germania, 55218  
Phone: +49 1752955353

---

### BUCCI INDUSTRIES DEUTSCHLAND

Stammheimer Str, 10  
D-70806 Kornwestheim - Germany  
Phone: +49 7154 8370 700

---

### INDIA

**DWIJ CONSULTANTS**  
25, Payal Park Part-1, Satellite Road  
Gujarat , India, 380015  
Phone: +91 7926760747

---

### JAPAN

**BUCCI INDUSTRIES JAPAN-IGM NIPPON**  
Kamoi, 6-10-1 Midori-Ku, 226-0003  
Yokohama-Shi Kanagawa  
Phone: +81 45 931 5096

---

### NEW ZELAND

**SCOTT MACHINERY LIMITED**  
51 Gilberthorpes Rd, Hei Hei  
Christchurch, Nuova Zelanda, 8441  
Phone: +64 3-349 2266

---

### POLAND

**Narzędzia Skrawające TOOLS Sp. z o.o.**  
Ul. Władysława Grabskiego 25,  
Siechnice, Polonia, 55-011  
Phone: +48 713435858

---

### RUSSIA

**SOLVER ENGINEERING LLC**  
43 STANKEVICHIA STR  
VORONEZH, Russia, 394006  
Phone: +7 4732777222

---

### SPAIN

**DAISA TECHNOLOGIC, S.L.**  
Urdaneta Bidea, 13  
Zarautz, Gipuzkoa, Spagna, 20800  
Phone: +34 943133739

---

### SWEDEN

**LICHRON AB**  
Norregårdsvägen 17  
Skövde, Svezia, 541 34  
Phone: +46 500445050

---

### SWITZERLAND

**BUCCI INDUSTRIES SWISS SA**  
Route Du Granval 3  
Belprahon, Svizzera, 2744  
Phone: +41 324934054

---

### TAIWAN

**MONG TEC ENTERPRISE CO., LTD**  
2F, No.156, FUTAIN 3Rd ST  
TAICHUNG CITY, Taiwan, 40241  
Phone: +886 422653360

---

### TURKEY

**SELEN MAKINE VE TEKNOLOJİ  
HİZ.SAN.TIC.LTD.STİ**  
İbrahim Ağa Cd. No:255  
Gebze/Kocaeli, Turchia, 41400  
Phone: +90 2626413208

---

### UNITED KINGDOM

**YMT LTD**  
Tuscan House George Smith Way  
Lufton, Yeovil , Regno Unito, BA22 8QR  
Phone: +44 1935 428375

---

### TDT TECHNOLOGY LTD

Unit 20/Woodside Park  
Rugby, Regno Unito, CV21 2NP  
Phone: +44 1788570411

---

### UNITED STATES

**BUCCI INDUSTRIES USA, INC.**  
9332 Forsyth Park Dr  
Charlotte, Stati Uniti, NC 28273  
Phone: +1 7045838341

---



ALGRA S.p.A. Divisione accessori  
Via Manzoni, 41 24031 Almenno S. Salvatore (BG)  
Tel. +39 035.64.20.51 • Fax +39 035.64.01.28  
algra.accessori@algra.it - www.algra.it