

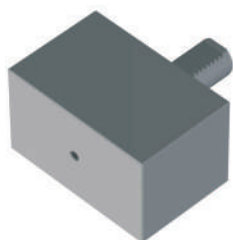
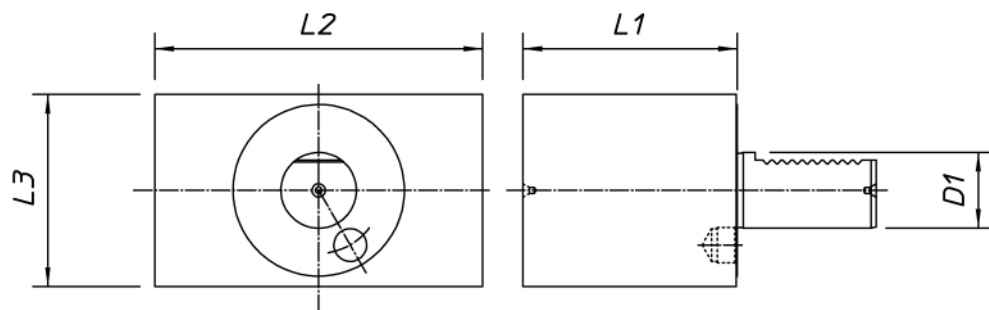
VDI

Portautensili per torni CNC secondo DIN 69880



A1

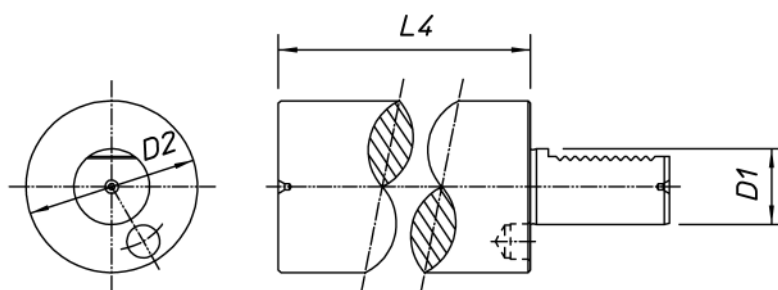
 Portautensile VDI semilavorato
 VDI blank toolholder
 Ébauche de porte-outil VDI
 VDI Werkzeughalter vorgearbeitet

 Rettangolare
 Rectangular
 Rectangulaire
 Rechteckig


| Codice - code - code - Bestell Nr. | D1 | L1 | L2 | L3 | | | | | | | | | | | | | | | |
|------------------------------------|-----------|------------|-----|-----|--|--|--|--|--|--|--|--|--|--|--|--|--|--|--|
| A1 16X44 | 16 | 44 | 78 | 44 | | | | | | | | | | | | | | | |
| A1 20X65 | 20 | 65 | 100 | 60 | | | | | | | | | | | | | | | |
| A1 30X85 | 30 | 85 | 130 | 76 | | | | | | | | | | | | | | | |
| A1 40X100 | 40 | 100 | 151 | 96 | | | | | | | | | | | | | | | |
| A1 50X125 | 50 | 125 | 160 | 120 | | | | | | | | | | | | | | | |
| A1 60X160 | 60 | 160 | 165 | 125 | | | | | | | | | | | | | | | |

A2

 Portautensile VDI semilavorato
 VDI blank toolholder
 Ébauche de porte-outil VDI
 VDI Werkzeughalter vorgearbeitet

 Rotondo
 Round
 Rond
 Rund


| Codice - code - code - Bestell Nr. | D1 | D2 | L4 | | | | | | | | | | | | | | | | |
|------------------------------------|-----------|------------|-----|--|--|--|--|--|--|--|--|--|--|--|--|--|--|--|--|
| A2 16X60 | 16 | 40 | 60 | | | | | | | | | | | | | | | | |
| A2 20X70 | 20 | 50 | 70 | | | | | | | | | | | | | | | | |
| A2 30X100 | 30 | 68 | 100 | | | | | | | | | | | | | | | | |
| A2 30X240 | 30 | 68 | 240 | | | | | | | | | | | | | | | | |
| A2 40X120 | 40 | 83 | 120 | | | | | | | | | | | | | | | | |
| A2 40X320 | 40 | 83 | 320 | | | | | | | | | | | | | | | | |
| A2 50X135 | 50 | 98 | 135 | | | | | | | | | | | | | | | | |
| A2 50X400 | 50 | 98 | 400 | | | | | | | | | | | | | | | | |
| A2 60X150 | 60 | 123 | 150 | | | | | | | | | | | | | | | | |
| A2 60X480 | 60 | 123 | 480 | | | | | | | | | | | | | | | | |

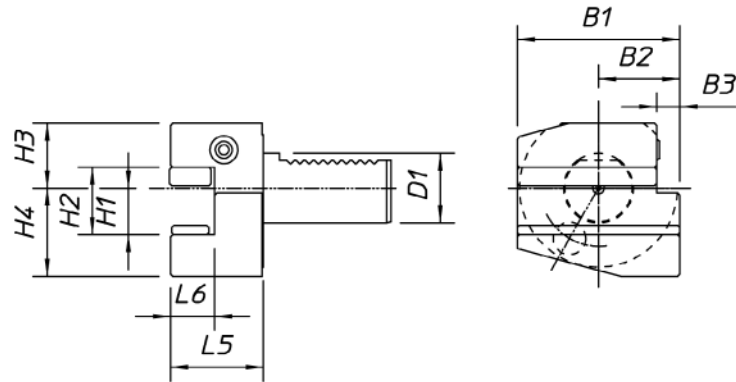
VDI

B1

 Portautensile VDI
 VDI toolholder
 Porte-outil VDI
 VDI Werkzeughalter

 Con sede trasversale rettangolare
 With transversal rectangular seat
 Avec siège rectangulaire transversal
 Mit Vierkant-Queraufnahme

 Destro
 Right-hand
 Droit
 Rechts

 Corto
 Short
 Court
 Kurz


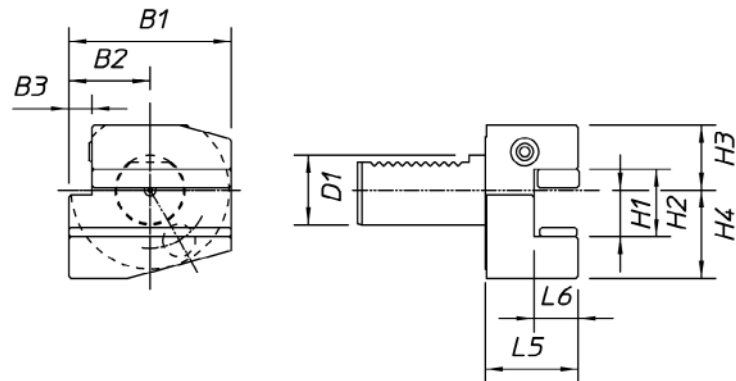
| Codice - code - code - Bestell Nr. | D1 | H1 | H2 | H3 | H4 | B1 | B2 | B3 | L5 | L6 | | | |
|------------------------------------|----|-------|----|------|------|-----|------|------|----|----|--|--|--|
| B1 16X12X24 | 16 | 12 | 17 | 20 | 22 | 42 | 23 | 5 | 24 | 11 | | | |
| B1 16X12X34 | 16 | 12 | 17 | 20 | 22 | 42 | 23 | 5 | 34 | 11 | | | |
| B1 20X16X30 | 20 | 16 | 22 | 25 | 30 | 55 | 30 | 7 | 30 | 14 | | | |
| B1 20X16X40 | 20 | 16 | 22 | 25 | 30 | 55 | 30 | 7 | 40 | 14 | | | |
| B1 30X20/16X40 | 30 | 20/16 | 29 | 28 | 38 | 70 | 35 | 10 | 40 | 18 | | | |
| B1 30X20/16X60 | 30 | 20/16 | 29 | 28 | 38 | 70 | 35 | 10 | 60 | 18 | | | |
| B1 40X25/20X44 | 40 | 25/20 | 34 | 32,5 | 48 | 85 | 42,5 | 12,5 | 44 | 22 | | | |
| B1 50X32/25X55 | 50 | 32/25 | 41 | 35 | 60 | 100 | 50 | 16 | 55 | 25 | | | |
| B1 60X32X60 | 60 | 32 | 41 | 42,5 | 62,5 | 125 | 62,5 | 16 | 60 | 30 | | | |


B2

 Portautensile VDI
 VDI toolholder
 Porte-outil VDI
 VDI Werkzeughalter

 Con sede trasversale rettangolare
 With transversal rectangular seat
 Avec siège rectangulaire transversal
 Mit Vierkant-Queraufnahme

 Sinistro
 Left-hand
 Gauche
 Links

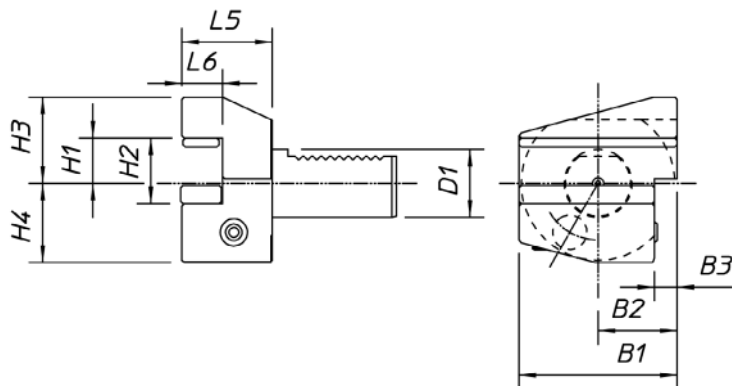
 Corto
 Short
 Court
 Kurz


| Codice - code - code - Bestell Nr. | D1 | H1 | H2 | H3 | H4 | B1 | B2 | B3 | L5 | L6 | | | |
|------------------------------------|----|-------|----|------|------|-----|------|------|----|----|--|--|--|
| B2 16X12X24 | 16 | 12 | 17 | 20 | 22 | 42 | 23 | 5 | 24 | 11 | | | |
| B2 16X12X34 | 16 | 12 | 17 | 20 | 22 | 42 | 23 | 5 | 34 | 11 | | | |
| B2 20X16X30 | 20 | 16 | 22 | 25 | 30 | 55 | 30 | 7 | 30 | 14 | | | |
| B2 20X16X40 | 20 | 16 | 22 | 25 | 30 | 55 | 30 | 7 | 40 | 14 | | | |
| B2 30X20/16X40 | 30 | 20/16 | 29 | 28 | 38 | 70 | 35 | 10 | 40 | 18 | | | |
| B2 30X20/16X60 | 30 | 20/16 | 29 | 28 | 38 | 70 | 35 | 10 | 60 | 18 | | | |
| B2 40X25/20X44 | 40 | 25/20 | 34 | 32,5 | 48 | 85 | 42,5 | 12,5 | 44 | 22 | | | |
| B2 50X32/25X55 | 50 | 32/25 | 41 | 35 | 60 | 100 | 50 | 16 | 55 | 25 | | | |
| B2 60X32X60 | 60 | 32 | 41 | 42,5 | 62,5 | 125 | 62,5 | 16 | 60 | 30 | | | |

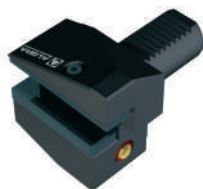

VDI

B3

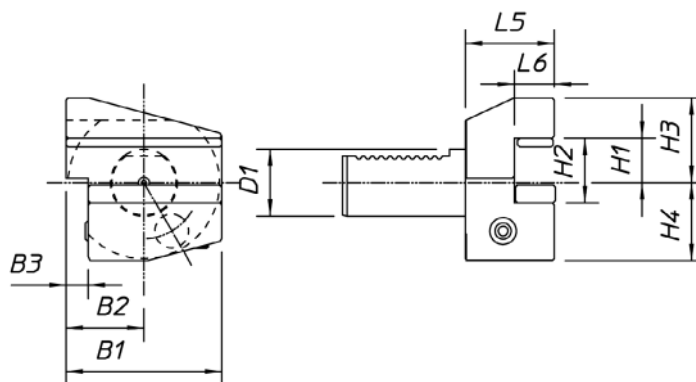
| | | | | |
|--|---|---|---|---------------------------------|
| Portautensile VDI VDI toolholder Porte-outil VDI VDI Werkzeughalter | Con sede trasversale rettangolare With transversal rectangular seat Avec siège rectangulaire transversal Mit Vierkant-Queraufnahme | Rovesciato Upside-down Renversé Überkopf | Destro Right-hand Droit Rechts | Corto Short Court Kurz |
|--|---|---|---|---------------------------------|



| Codice - code - code - Bestell Nr. | D1 | H1 | H2 | H3 | H4 | B1 | B2 | B3 | L5 | L6 | | | |
|------------------------------------|----|-------|----|------|------|-----|------|------|----|----|--|--|--|
| B3 16X12X24 | 16 | 12 | 17 | 20 | 22 | 42 | 23 | 5 | 24 | 11 | | | |
| B3 16X12X34 | 16 | 12 | 17 | 20 | 22 | 42 | 23 | 5 | 34 | 11 | | | |
| B3 20X16X30 | 20 | 16 | 22 | 30 | 25 | 55 | 30 | 7 | 30 | 14 | | | |
| B3 20X16X40 | 20 | 16 | 22 | 30 | 25 | 55 | 30 | 7 | 40 | 14 | | | |
| B3 30X20/16X40 | 30 | 20/16 | 29 | 38 | 35 | 70 | 35 | 10 | 40 | 18 | | | |
| B3 30X20/16X60 | 30 | 20/16 | 29 | 38 | 35 | 70 | 35 | 10 | 60 | 18 | | | |
| B3 40X25/20X44 | 40 | 25/20 | 34 | 48 | 42,5 | 85 | 42,5 | 12,5 | 44 | 22 | | | |
| B3 50X32/25X55 | 50 | 32/25 | 41 | 60 | 50 | 100 | 50 | 16 | 55 | 25 | | | |
| B3 60X32X60 | 60 | 32 | 41 | 62,5 | 62,5 | 125 | 62,5 | 16 | 60 | 30 | | | |


B4

| | | | | |
|--|---|---|--|---------------------------------|
| Portautensile VDI VDI toolholder Porte-outil VDI VDI Werkzeughalter | Con sede trasversale rettangolare With transversal rectangular seat Avec siège rectangulaire transversal Mit Vierkant-Queraufnahme | Rovesciato Upside-down Renversé Überkopf | Sinistro Left-hand Gauche Links | Corto Short Court Kurz |
|--|---|---|--|---------------------------------|



| Codice - code - code - Bestell Nr. | D1 | H1 | H2 | H3 | H4 | B1 | B2 | B3 | L5 | L6 | | | |
|------------------------------------|----|-------|----|------|------|-----|------|------|----|----|--|--|--|
| B4 16X12X24 | 16 | 12 | 17 | 20 | 22 | 42 | 23 | 5 | 24 | 11 | | | |
| B4 16X12X34 | 16 | 12 | 17 | 20 | 22 | 42 | 23 | 5 | 34 | 11 | | | |
| B4 20X16X30 | 20 | 16 | 22 | 30 | 25 | 55 | 30 | 7 | 30 | 14 | | | |
| B4 20X16X40 | 20 | 16 | 22 | 30 | 25 | 55 | 30 | 7 | 40 | 14 | | | |
| B4 30X20/16X40 | 30 | 20/16 | 29 | 38 | 35 | 70 | 35 | 10 | 40 | 18 | | | |
| B4 30X20/16X60 | 30 | 20/16 | 29 | 38 | 35 | 70 | 35 | 10 | 60 | 18 | | | |
| B4 40X25/20X44 | 40 | 25/20 | 34 | 48 | 42,5 | 85 | 42,5 | 12,5 | 44 | 22 | | | |
| B4 50X32/25X55 | 50 | 32/25 | 41 | 60 | 50 | 100 | 50 | 16 | 55 | 25 | | | |
| B4 60X32X60 | 60 | 32 | 41 | 62,5 | 62,5 | 125 | 62,5 | 16 | 60 | 30 | | | |

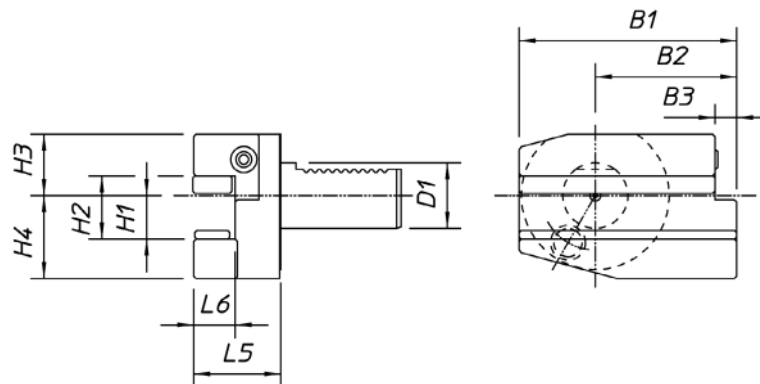


B5

 Portautensile VDI
 VDI toolholder
 Porte-outil VDI
 VDI Werkzeughalter

 Con sede trasversale rettangolare
 With transversal rectangular seat
 Avec siège rectangulaire transversal
 Mit Vierkant-Queraufnahme

 Destro
 Right-hand
 Droit
 Rechts

 Lungo
 Long
 Long
 Lang


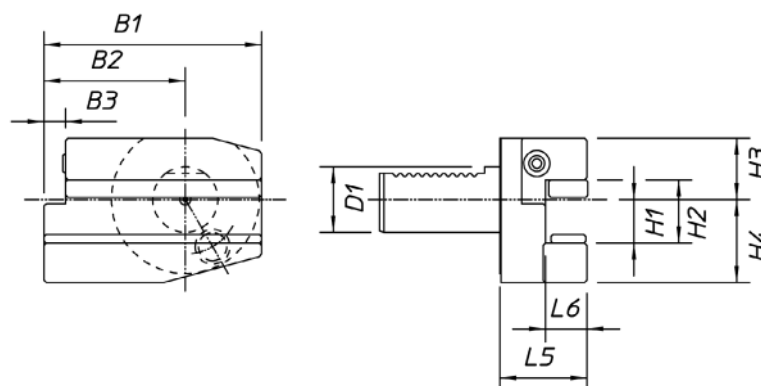
| Codice - code - code - Bestell Nr. | D1 | H1 | H2 | H3 | H4 | B1 | B2 | B3 | L5 | L6 | | | |
|------------------------------------|----|-------|----|------|------|-----|------|------|----|----|--|--|--|
| B5 16X12X24 | 16 | 12 | 17 | 20 | 22 | 58 | 39 | 5 | 24 | 11 | | | |
| B5 16X12X34 | 16 | 12 | 17 | 20 | 22 | 58 | 39 | 5 | 34 | 11 | | | |
| B5 20X16X30 | 20 | 16 | 22 | 25 | 30 | 75 | 50 | 7 | 30 | 14 | | | |
| B5 20X16X40 | 20 | 16 | 22 | 25 | 30 | 75 | 50 | 7 | 40 | 14 | | | |
| B5 30X20/16X40 | 30 | 20/16 | 29 | 28 | 38 | 100 | 65 | 10 | 40 | 18 | | | |
| B5 30X20/16X60 | 30 | 20/16 | 29 | 28 | 38 | 100 | 65 | 10 | 60 | 18 | | | |
| B5 40X25/20X44 | 40 | 25/20 | 34 | 32,5 | 48 | 118 | 75,5 | 12,5 | 44 | 22 | | | |
| B5 50X32/25X55 | 50 | 32/25 | 41 | 35 | 60 | 130 | 80 | 16 | 55 | 25 | | | |
| B5 60X32X60 | 60 | 32 | 41 | 42,5 | 62,5 | 145 | 82,5 | 16 | 60 | 30 | | | |


B6

 Portautensile VDI
 VDI toolholder
 Porte-outil VDI
 VDI Werkzeughalter

 Con sede trasversale rettangolare
 With transversal rectangular seat
 Avec siège rectangulaire transversal
 Mit Vierkant-Queraufnahme

 Sinistro
 Left-hand
 Gauche
 Links

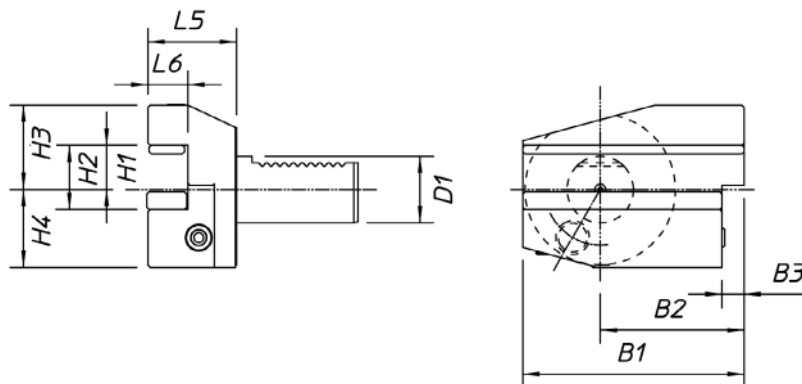
 Lungo
 Long
 Long
 Lang


| Codice - code - code - Bestell Nr. | D1 | H1 | H2 | H3 | H4 | B1 | B2 | B3 | L5 | L6 | | | |
|------------------------------------|----|-------|----|------|------|-----|------|------|----|----|--|--|--|
| B6 16X12X24 | 16 | 12 | 17 | 20 | 22 | 58 | 39 | 5 | 24 | 11 | | | |
| B6 16X12X34 | 16 | 12 | 17 | 20 | 22 | 58 | 39 | 5 | 34 | 11 | | | |
| B6 20X16X30 | 20 | 16 | 22 | 25 | 30 | 75 | 50 | 7 | 30 | 14 | | | |
| B6 20X16X40 | 20 | 16 | 22 | 25 | 30 | 75 | 50 | 7 | 40 | 14 | | | |
| B6 30X20/16X40 | 30 | 20/16 | 29 | 28 | 38 | 100 | 65 | 10 | 40 | 18 | | | |
| B6 30X20/16X60 | 30 | 20/16 | 29 | 28 | 38 | 100 | 65 | 10 | 60 | 18 | | | |
| B6 40X25/20X44 | 40 | 25/20 | 34 | 32,5 | 48 | 118 | 75,5 | 12,5 | 44 | 22 | | | |
| B6 50X32/25X55 | 50 | 32/25 | 41 | 35 | 60 | 130 | 80 | 16 | 55 | 25 | | | |
| B6 60X32X60 | 60 | 32 | 41 | 42,5 | 62,5 | 145 | 82,5 | 16 | 60 | 30 | | | |


VDI

B7

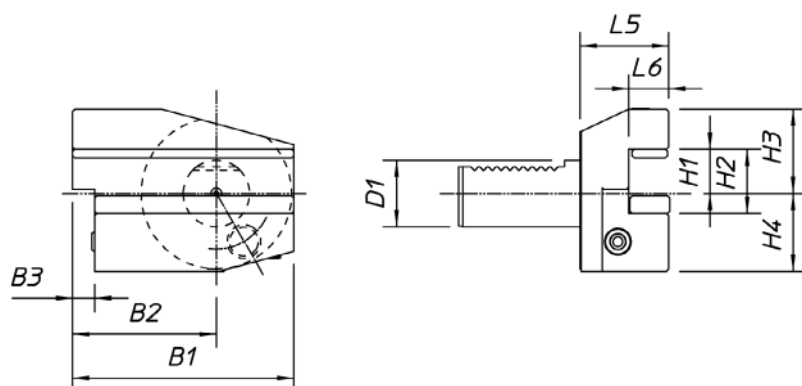
| | | | | |
|--|---|---|---|-------------------------------|
| Portautensile VDI VDI toolholder Porte-outil VDI VDI Werkzeughalter | Con sede trasversale rettangolare With transversal rectangular seat Avec siège rectangulaire transversal Mit Vierkant-Queraufnahme | Rovesciato Upside-down Renversé Überkopf | Destro Right-hand Droit Rechts | Lungo Long Long Lang |
|--|---|---|---|-------------------------------|



| Codice - code - code - Bestell Nr. | D1 | H1 | H2 | H3 | H4 | B1 | B2 | B3 | L5 | L6 | | | |
|------------------------------------|----|-------|----|------|------|-----|------|------|----|----|--|--|--|
| B7 16X12X24 | 16 | 12 | 17 | 20 | 22 | 58 | 39 | 5 | 24 | 11 | | | |
| B7 16X12X34 | 16 | 12 | 17 | 20 | 22 | 58 | 39 | 5 | 34 | 11 | | | |
| B7 20X16X30 | 20 | 16 | 22 | 30 | 25 | 75 | 50 | 7 | 30 | 14 | | | |
| B7 20X16X40 | 20 | 16 | 22 | 30 | 25 | 75 | 50 | 7 | 40 | 14 | | | |
| B7 30X20/16X40 | 30 | 20/16 | 29 | 38 | 35 | 100 | 65 | 10 | 40 | 18 | | | |
| B7 30X20/16X60 | 30 | 20/16 | 29 | 38 | 35 | 100 | 65 | 10 | 60 | 18 | | | |
| B7 40X25/20X44 | 40 | 25/20 | 34 | 48 | 42,5 | 118 | 75,5 | 12,5 | 44 | 22 | | | |
| B7 50X32/25X55 | 50 | 32/25 | 41 | 60 | 50 | 130 | 80 | 16 | 55 | 25 | | | |
| B7 60X32X60 | 60 | 32 | 41 | 62,5 | 62,5 | 145 | 82,5 | 16 | 60 | 30 | | | |


B8

| | | | | |
|--|---|---|--|-------------------------------|
| Portautensile VDI VDI toolholder Porte-outil VDI VDI Werkzeughalter | Con sede trasversale rettangolare With transversal rectangular seat Avec siège rectangulaire transversal Mit Vierkant-Queraufnahme | Rovesciato Upside-down Renversé Überkopf | Sinistro Left-hand Gauche Links | Lungo Long Long Lang |
|--|---|---|--|-------------------------------|



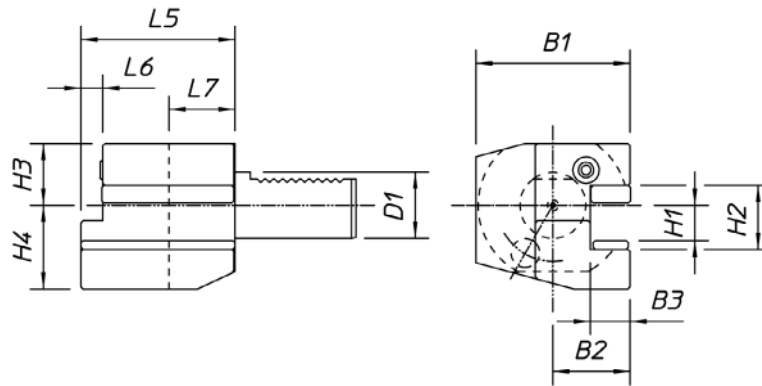
| Codice - code - code - Bestell Nr. | D1 | H1 | H2 | H3 | H4 | B1 | B2 | B3 | L5 | L6 | | | |
|------------------------------------|----|-------|----|------|------|-----|------|------|----|----|--|--|--|
| B8 16X12X24 | 16 | 12 | 17 | 20 | 22 | 58 | 39 | 5 | 24 | 11 | | | |
| B8 16X12X34 | 16 | 12 | 17 | 20 | 22 | 58 | 39 | 5 | 34 | 11 | | | |
| B8 20X16X30 | 20 | 16 | 22 | 30 | 25 | 75 | 50 | 7 | 30 | 14 | | | |
| B8 20X16X40 | 20 | 16 | 22 | 30 | 25 | 75 | 50 | 7 | 40 | 14 | | | |
| B8 30X20/16X40 | 30 | 20/16 | 29 | 38 | 35 | 100 | 65 | 10 | 40 | 18 | | | |
| B8 30X20/16X60 | 30 | 20/16 | 29 | 38 | 35 | 100 | 65 | 10 | 60 | 18 | | | |
| B8 40X25/20X44 | 40 | 25/20 | 34 | 48 | 42,5 | 118 | 75,5 | 12,5 | 44 | 22 | | | |
| B8 50X32/25X55 | 50 | 32/25 | 41 | 60 | 50 | 130 | 80 | 16 | 55 | 25 | | | |
| B8 60X32X60 | 60 | 32 | 41 | 62,5 | 62,5 | 145 | 82,5 | 16 | 60 | 30 | | | |


VDI

C1

 Portautensile VDI
 VDI toolholder
 Porte-outil VDI
 VDI Werkzeughalter

 Con sede longitudinale rettangolare
 With longitudinal rectangular seat
 Avec siège rectangulaire longitudinal
 Mit Vierkant-Längsaufnahme

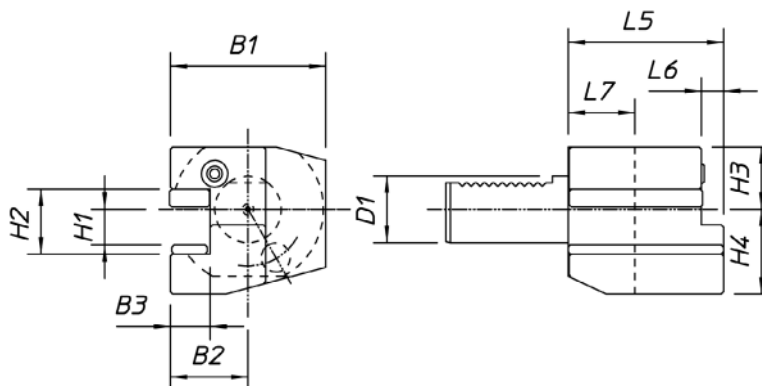
 Destro
 Right-hand
 Droit
 Rechts


| Codice - code - code - Bestell Nr. | D1 | H1 | H2 | H3 | H4 | B1 | B2 | B3 | L5 | L6 | L7 | | |
|------------------------------------|----|-------|----|------|------|-----|------|------|-----|------|----|--|--|
| C1 16X12 | 16 | 12 | 17 | 20 | 22 | 43 | 24 | 11 | 44 | 5 | 20 | | |
| C1 20X16 | 20 | 16 | 22 | 25 | 30 | 52 | 27 | 14 | 55 | 7 | 30 | | |
| C1 30X20/16 | 30 | 20/16 | 29 | 28 | 38 | 70 | 35 | 18 | 70 | 10 | 30 | | |
| C1 40X25/20 | 40 | 25/20 | 34 | 32,5 | 48 | 85 | 42,5 | 22 | 85 | 12,5 | 30 | | |
| C1 50X32/25 | 50 | 32/25 | 41 | 35 | 60 | 100 | 50 | 24,5 | 100 | 16 | 40 | | |
| C1 60X32 | 60 | 32 | 41 | 42,5 | 62,5 | 125 | 62,5 | 30 | 125 | 16 | 40 | | |

C2

 Portautensile VDI
 VDI toolholder
 Porte-outil VDI
 VDI Werkzeughalter

 Con sede longitudinale rettangolare
 With longitudinal rectangular seat
 Avec siège rectangulaire longitudinal
 Mit Vierkant-Längsaufnahme

 Sinistro
 Left-hand
 Gauche
 Links


| Codice - code - code - Bestell Nr. | D1 | H1 | H2 | H3 | H4 | B1 | B2 | B3 | L5 | L6 | L7 | | |
|------------------------------------|----|-------|----|------|------|-----|------|------|-----|------|----|--|--|
| C2 16X12 | 16 | 12 | 17 | 20 | 22 | 43 | 24 | 11 | 44 | 5 | 20 | | |
| C2 20X16 | 20 | 16 | 22 | 25 | 30 | 65 | 40 | 14 | 50 | - | 30 | | |
| C2 30X20/16 | 30 | 20/16 | 29 | 28 | 38 | 76 | 41 | 18 | 70 | 10 | 30 | | |
| C2 40X25/20 | 40 | 25/20 | 34 | 32,5 | 48 | 90 | 47,5 | 22 | 85 | 12,5 | 30 | | |
| C2 50X32/25 | 50 | 32/25 | 41 | 35 | 60 | 105 | 55 | 24,5 | 100 | 16 | 40 | | |
| C2 60X32 | 60 | 32 | 41 | 42,5 | 62,5 | 125 | 62,5 | 30 | 125 | 16 | 40 | | |

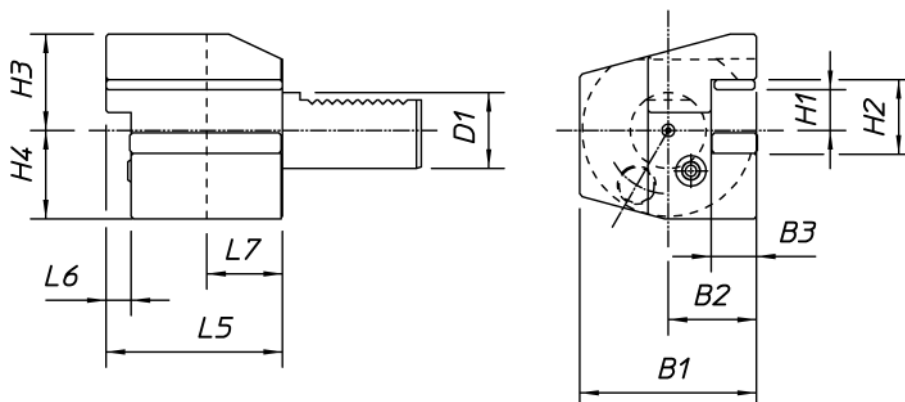
VDI

C3

 Portautensile VDI
 VDI toolholder
 Porte-outil VDI
 VDI Werkzeughalter

 Con sede longitudinale rettangolare
 With longitudinal rectangular seat
 Avec siège rectangulaire longitudinal
 Mit Vierkant-Längsaufnahme

 Rovesciato
 Upside-down
 Renversé
 Überkopf

 Destro
 Right-hand
 Droit
 Rechts


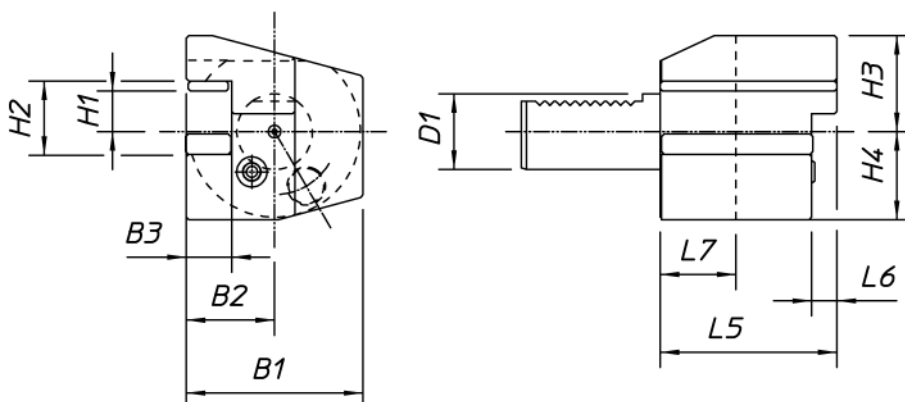
| Codice - code - code - Bestell Nr. | D1 | H1 | H2 | H3 | H4 | B1 | B2 | B3 | L5 | L6 | L7 |
|------------------------------------|----|-------|----|------|------|-----|------|------|-----|------|----|
| C3 16X12 | 16 | 12 | 17 | 22 | 20 | 43 | 24 | 11 | 44 | 5 | 20 |
| C3 20X16 | 20 | 16 | 22 | 30 | 25 | 52 | 27 | 14 | 55 | 7 | 30 |
| C3 30X20/16 | 30 | 20/16 | 29 | 38 | 35 | 70 | 35 | 18 | 70 | 10 | 30 |
| C3 40X25/20 | 40 | 25/20 | 34 | 48 | 42,5 | 85 | 42,5 | 22 | 85 | 12,5 | 30 |
| C3 50X32/25 | 50 | 32/25 | 41 | 60 | 50 | 100 | 50 | 24,5 | 100 | 16 | 40 |
| C3 60X32 | 60 | 32 | 41 | 62,5 | 62,5 | 125 | 62,5 | 30 | 125 | 16 | 40 |


C4

 Portautensile VDI
 VDI toolholder
 Porte-outil VDI
 VDI Werkzeughalter

 Con sede longitudinale rettangolare
 With longitudinal rectangular seat
 Avec siège rectangulaire longitudinal
 Mit Vierkant-Längsaufnahme

 Rovesciato
 Upside-down
 Renversé
 Überkopf

 Sinistro
 Left-hand
 Gauche
 Links


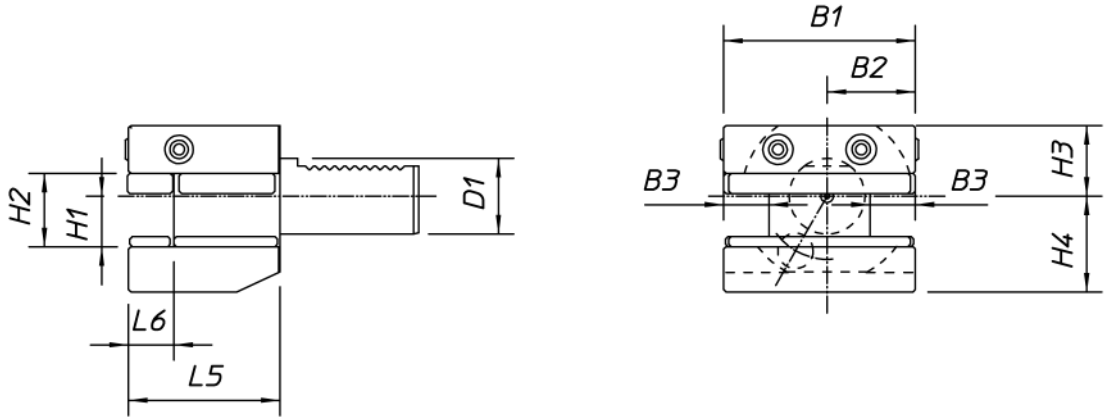
| Codice - code - code - Bestell Nr. | D1 | H1 | H2 | H3 | H4 | B1 | B2 | B3 | L5 | L6 | L7 |
|------------------------------------|----|-------|----|------|------|-----|------|------|-----|------|----|
| C4 16X12 | 16 | 12 | 17 | 22 | 20 | 43 | 24 | 11 | 44 | 5 | 20 |
| C4 20X16 | 20 | 16 | 22 | 30 | 25 | 65 | 40 | 14 | 50 | - | 30 |
| C4 30X20/16 | 30 | 20/16 | 29 | 38 | 35 | 76 | 41 | 18 | 70 | 10 | 30 |
| C4 40X25/20 | 40 | 25/20 | 34 | 48 | 42,5 | 90 | 47,5 | 22 | 85 | 12,5 | 30 |
| C4 50X32/25 | 50 | 32/25 | 41 | 60 | 50 | 105 | 55 | 24,5 | 100 | 16 | 40 |
| C4 60X32 | 60 | 32 | 41 | 62,5 | 62,5 | 125 | 62,5 | 30 | 125 | 16 | 40 |



D1

Portautensile VDI
VDI toolholder
Porte-outil VDI
VDI Werkzeughalter

Con più sedi rettangolari
With multiple rectangular seats
Avec sièges multiples rectangulaires
Mit Vierkant-Mehrfachaufnahmen



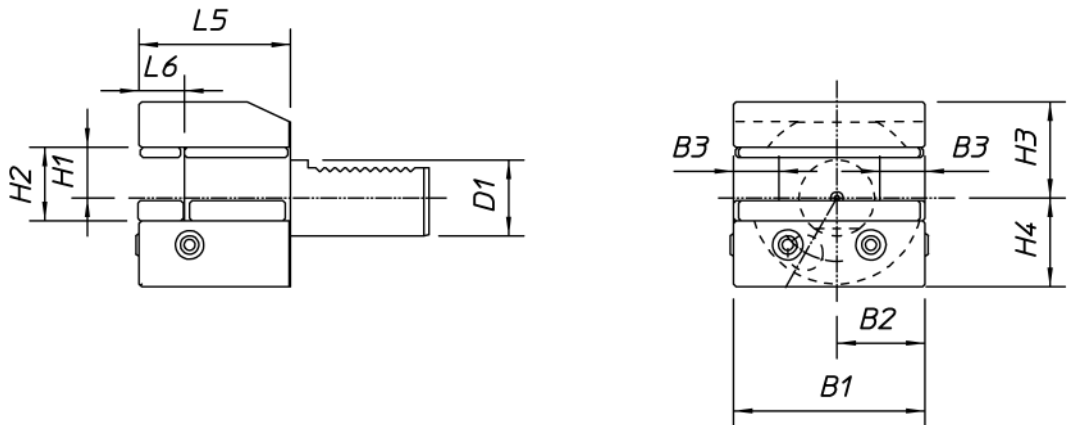
| Codice - code - code - Bestell Nr. | D1 | H1 | H2 | H3 | H4 | B1 | B2 | B3 | L5 | L6 | | | |
|------------------------------------|-----------|--------------|----|------|------|-----|------|------|-----|----|--|--|--|
| D1 30X20/16 | 30 | 20/16 | 29 | 28 | 38 | 76 | 35 | 18 | 60 | 18 | | | |
| D1 40X25/20 | 40 | 25/20 | 34 | 32,5 | 48 | 90 | 42,5 | 22 | 72 | 22 | | | |
| D1 50X32/25 | 50 | 32/25 | 41 | 35 | 60 | 105 | 50 | 24,5 | 85 | 25 | | | |
| D1 60X32 | 60 | 32 | 41 | 42,5 | 62,5 | 115 | 57,5 | 25 | 110 | 25 | | | |

D2

Portautensile VDI
VDI toolholder
Porte-outil VDI
VDI Werkzeughalter

Con più sedi rettangolari
With multiple rectangular seats
Avec sièges multiples rectangulaires
Mit Vierkant-Mehrfachaufnahmen

Rovesciato
Upside-down
Renversé
Überkopf



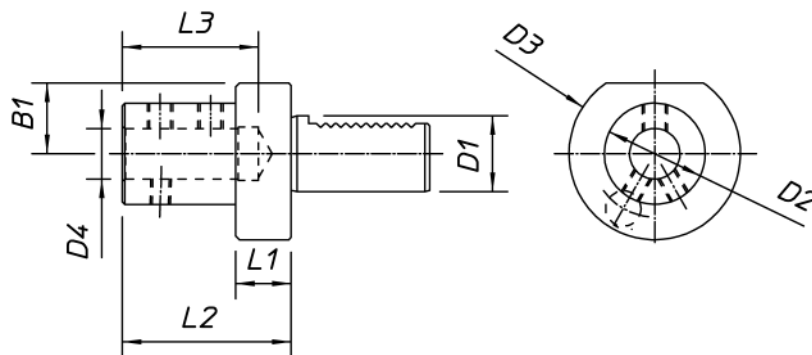
| Codice - code - code - Bestell Nr. | D1 | H1 | H2 | H3 | H4 | B1 | B2 | B3 | L5 | L6 | | | |
|------------------------------------|-----------|--------------|----|------|------|-----|------|------|-----|----|--|--|--|
| D1 30X20/16 | 30 | 20/16 | 29 | 38 | 35 | 76 | 35 | 18 | 60 | 18 | | | |
| D1 40X25/20 | 40 | 25/20 | 34 | 48 | 42,5 | 90 | 42,5 | 22 | 72 | 22 | | | |
| D1 50X32/25 | 50 | 32/25 | 41 | 60 | 50 | 105 | 50 | 24,5 | 85 | 25 | | | |
| D1 60X32 | 60 | 32 | 41 | 62,5 | 62,5 | 115 | 57,5 | 25 | 110 | 25 | | | |

VDI

Portautensile VDI
VDI toolholder
Porte-outil VDI
VDI Werkzeughalter

Per utensili a forare
For drilling tools
Pour outlis a perçage
Für Bohrwerkzeuge

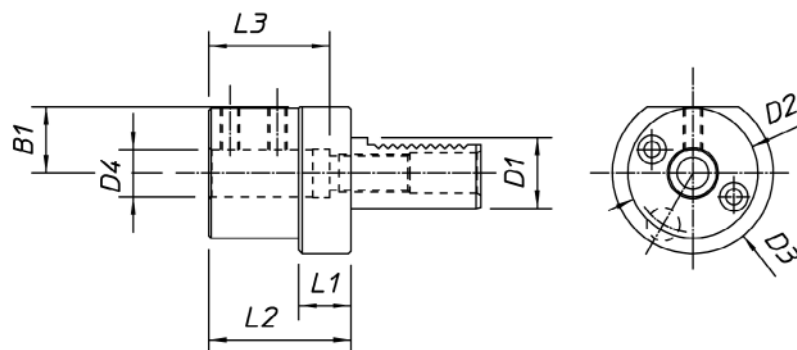
Con refrigerazione interna
With inner cooling system
Avec réfrigération interne
Mit innerer Kühlschmierstoffzuführung



| Codice - code - code - Bestell Nr. | D1 | D2 | D3 | D4 | B1 | L1 | L2 | L3 | | | | | | |
|------------------------------------|----|----|-----|----|------|----|-----|----|--|--|--|--|--|--|
| E1 20X16 | 20 | 36 | 50 | 16 | - | 18 | 67 | 54 | | | | | | |
| E1 20X20 | 20 | 40 | 50 | 20 | - | 18 | 67 | 54 | | | | | | |
| E1 20X25 | 20 | 45 | 50 | 25 | - | 18 | 71 | 59 | | | | | | |
| E1 30X16 | 30 | 36 | 68 | 16 | 28 | 22 | 67 | 54 | | | | | | |
| E1 30X20 | 30 | 40 | 68 | 20 | 28 | 22 | 67 | 54 | | | | | | |
| E1 30X25 | 30 | 45 | 68 | 25 | 28 | 22 | 71 | 59 | | | | | | |
| E1 30X32 | 30 | 52 | 68 | 32 | 28 | 22 | 75 | 63 | | | | | | |
| E1 30X40 | 30 | 60 | 68 | 40 | 28 | 22 | 90 | 73 | | | | | | |
| E1 40X16 | 40 | 36 | 83 | 16 | 32,5 | 22 | 67 | 54 | | | | | | |
| E1 40X20 | 40 | 40 | 83 | 20 | 32,5 | 22 | 67 | 54 | | | | | | |
| E1 40X25 | 40 | 45 | 83 | 25 | 32,5 | 22 | 75 | 59 | | | | | | |
| E1 40X32 | 40 | 52 | 83 | 32 | 32,5 | 22 | 75 | 63 | | | | | | |
| E1 40X40 | 40 | 60 | 83 | 40 | 32,5 | 22 | 90 | 73 | | | | | | |
| E1 40X50 | 40 | 70 | 83 | 50 | 32,5 | 22 | 100 | 83 | | | | | | |
| E1 50X20 | 50 | 40 | 98 | 20 | 35 | 30 | 67 | 54 | | | | | | |
| E1 50X25 | 50 | 45 | 98 | 25 | 35 | 30 | 80 | 59 | | | | | | |
| E1 50X32 | 50 | 52 | 98 | 32 | 35 | 30 | 80 | 63 | | | | | | |
| E1 50X40 | 50 | 60 | 98 | 40 | 35 | 30 | 90 | 73 | | | | | | |
| E1 50X50 | 50 | 70 | 98 | 50 | 35 | 30 | 100 | 83 | | | | | | |
| E1 60X20 | 60 | 40 | 123 | 20 | 42,5 | 30 | 80 | 54 | | | | | | |
| E1 60X25 | 60 | 45 | 123 | 25 | 42,5 | 30 | 80 | 59 | | | | | | |
| E1 60X32 | 60 | 52 | 123 | 32 | 42,5 | 30 | 80 | 63 | | | | | | |
| E1 60X40 | 60 | 60 | 123 | 40 | 42,5 | 30 | 90 | 73 | | | | | | |
| E1 60X50 | 60 | 70 | 123 | 50 | 42,5 | 30 | 100 | 83 | | | | | | |


VDI

Portautensile VDI Per baren
 VDI toolholder For boring bars
 Porte-outil VDI Pour outlis à aléser
 VDI Werkzeughalter Für Bohrstanen

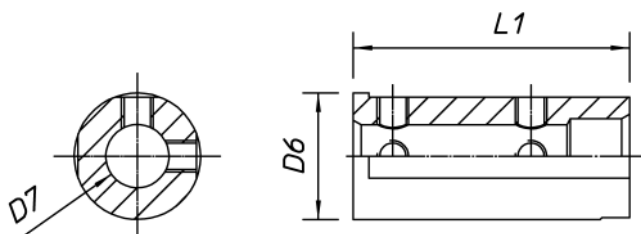


| Codice - code - code - Bestell Nr. | D1 | D2 | D3 | D4 | B1 | L1 | L2 | L3 | | | | | | |
|------------------------------------|----|----|-----|----|------|----|-----|----|--|--|--|--|--|--|
| E2 16X6 | 16 | 32 | 40 | 6 | - | 13 | 44 | 34 | | | | | | |
| E2 16X8 | 16 | 32 | 40 | 8 | - | 13 | 44 | 34 | | | | | | |
| E2 16X10 | 16 | 32 | 40 | 10 | - | 13 | 44 | 34 | | | | | | |
| E2 16X12 | 16 | 40 | 40 | 12 | - | - | 44 | 34 | | | | | | |
| E2 16X16 | 16 | 40 | 40 | 16 | - | - | 44 | 34 | | | | | | |
| E2 20X8 | 20 | 40 | 50 | 8 | - | 18 | 50 | 41 | | | | | | |
| E2 20X10 | 20 | 40 | 50 | 10 | - | 18 | 50 | 41 | | | | | | |
| E2 20X12 | 20 | 40 | 50 | 12 | - | 18 | 50 | 41 | | | | | | |
| E2 20X16 | 20 | 40 | 50 | 16 | - | 18 | 50 | 41 | | | | | | |
| E2 20X20 | 20 | 50 | 50 | 20 | - | - | 50 | 41 | | | | | | |
| E2 20X25 | 20 | 50 | 50 | 25 | - | - | 60 | 51 | | | | | | |
| E2 30X8 | 30 | 55 | 68 | 8 | 28 | 22 | 60 | 51 | | | | | | |
| E2 30X10 | 30 | 55 | 68 | 10 | 28 | 22 | 60 | 51 | | | | | | |
| E2 30X12 | 30 | 55 | 68 | 12 | 28 | 22 | 60 | 51 | | | | | | |
| E2 30X16 | 30 | 55 | 68 | 16 | 28 | 22 | 60 | 51 | | | | | | |
| E2 30X20 | 30 | 55 | 68 | 20 | 28 | 22 | 60 | 51 | | | | | | |
| E2 30X25 | 30 | 55 | 68 | 25 | 28 | 22 | 60 | 51 | | | | | | |
| E2 30X32 | 30 | 68 | 68 | 32 | 28 | - | 75 | 61 | | | | | | |
| E2 40X8 | 40 | 55 | 83 | 8 | 32,5 | 22 | 75 | 61 | | | | | | |
| E2 40X10 | 40 | 55 | 83 | 10 | 32,5 | 22 | 75 | 61 | | | | | | |
| E2 40X12 | 40 | 55 | 83 | 12 | 32,5 | 22 | 75 | 61 | | | | | | |
| E2 40X16 | 40 | 55 | 83 | 16 | 32,5 | 22 | 75 | 61 | | | | | | |
| E2 40X20 | 40 | 55 | 83 | 20 | 32,5 | 22 | 75 | 61 | | | | | | |
| E2 40X25 | 40 | 55 | 83 | 25 | 32,5 | 22 | 75 | 61 | | | | | | |
| E2 40X32 | 40 | 83 | 83 | 32 | 32,5 | - | 75 | 61 | | | | | | |
| E2 40X40 | 40 | 83 | 83 | 40 | 32,5 | - | 90 | 76 | | | | | | |
| E2 40X50 | 40 | 83 | 83 | 50 | 37,5 | - | 100 | 83 | | | | | | |
| E2 50X12 | 50 | 68 | 98 | 12 | 35 | 30 | 90 | 76 | | | | | | |
| E2 50X16 | 50 | 68 | 98 | 16 | 35 | 30 | 90 | 76 | | | | | | |
| E2 50X20 | 50 | 68 | 98 | 20 | 35 | 30 | 90 | 76 | | | | | | |
| E2 50X25 | 50 | 68 | 98 | 25 | 35 | 30 | 90 | 76 | | | | | | |
| E2 50X32 | 50 | 68 | 98 | 32 | 35 | 30 | 90 | 76 | | | | | | |
| E2 50X40 | 50 | 98 | 98 | 40 | 35 | - | 90 | 76 | | | | | | |
| E2 50X50 | 50 | 98 | 98 | 50 | 35 | - | 100 | 86 | | | | | | |
| E2 60X16 | 60 | 68 | 123 | 16 | 42,5 | 30 | 90 | 76 | | | | | | |
| E2 60X20 | 60 | 68 | 123 | 20 | 42,5 | 30 | 90 | 76 | | | | | | |
| E2 60X25 | 60 | 68 | 123 | 25 | 42,5 | 30 | 90 | 76 | | | | | | |
| E2 60X32 | 60 | 68 | 123 | 32 | 42,5 | 30 | 90 | 76 | | | | | | |
| E2 60X40 | 60 | 98 | 123 | 40 | 42,5 | 30 | 90 | 76 | | | | | | |
| E2 60X50 | 60 | 98 | 123 | 50 | 42,5 | 30 | 100 | 86 | | | | | | |


VDI

E2-1

Bussola di riduzione
 Reducing sleeve
 Douille de réduction
 Reduzierhülse

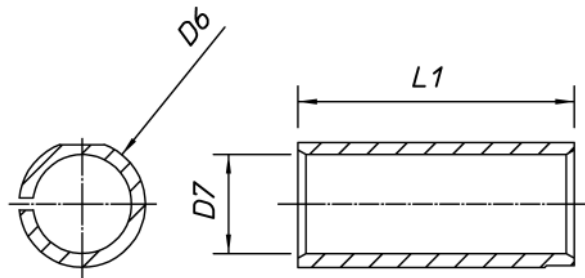


| Codice - code - code - Bestell Nr. | D6 | D7 | L1 | | | | | | | | | | | | | | | |
|------------------------------------|----|----|----|--|--|--|--|--|--|--|--|--|--|--|--|--|--|--|
| E2-1 25X8 | 25 | 8 | 60 | | | | | | | | | | | | | | | |
| E2-1 25X10 | 25 | 10 | 60 | | | | | | | | | | | | | | | |
| E2-1 25X12 | 25 | 12 | 60 | | | | | | | | | | | | | | | |
| E2-1 32X8 | 32 | 8 | 70 | | | | | | | | | | | | | | | |
| E2-1 32X10 | 32 | 10 | 70 | | | | | | | | | | | | | | | |
| E2-1 32X12 | 32 | 12 | 70 | | | | | | | | | | | | | | | |
| E2-1 32X16 | 32 | 16 | 70 | | | | | | | | | | | | | | | |
| E2-1 32X20 | 32 | 20 | 70 | | | | | | | | | | | | | | | |
| E2-1 40X8 | 40 | 8 | 80 | | | | | | | | | | | | | | | |
| E2-1 40X10 | 40 | 10 | 80 | | | | | | | | | | | | | | | |
| E2-1 40X12 | 40 | 12 | 80 | | | | | | | | | | | | | | | |
| E2-1 40X16 | 40 | 16 | 80 | | | | | | | | | | | | | | | |
| E2-1 40X20 | 40 | 20 | 80 | | | | | | | | | | | | | | | |
| E2-1 40X25 | 40 | 25 | 80 | | | | | | | | | | | | | | | |
| E2-1 50X16 | 50 | 16 | 90 | | | | | | | | | | | | | | | |
| E2-1 50X20 | 50 | 20 | 90 | | | | | | | | | | | | | | | |
| E2-1 50X25 | 50 | 25 | 90 | | | | | | | | | | | | | | | |
| E2-1 50X32 | 50 | 32 | 90 | | | | | | | | | | | | | | | |

VDI

E2-2

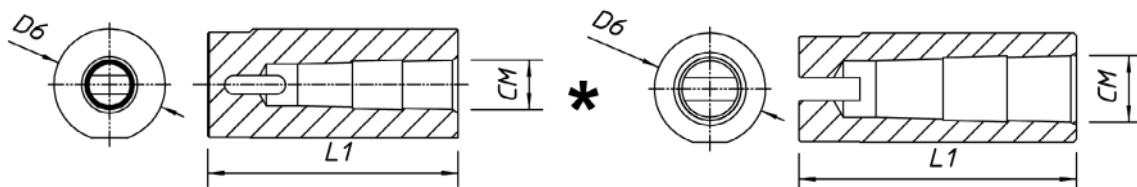
Bussola di riduzione cilindrica
 Parallel reducing sleeve
 Douille de réduction cylindrique
 Zylindrische Reduzierhülse



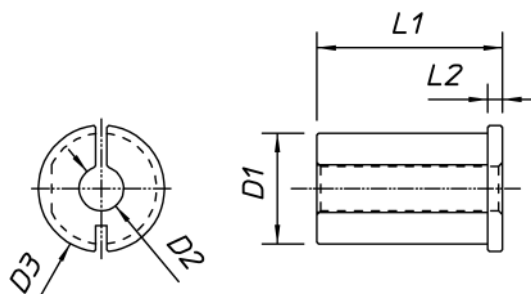
| Codice - code - code - Bestell Nr. | D6 | D7 | L1 | | | | | | | | | | | | |
|------------------------------------|----|----|----|--|--|--|--|--|--|--|--|--|--|--|--|
| E2-2 25X16 | 25 | 16 | 60 | | | | | | | | | | | | |
| E2-2 32X25 | 32 | 25 | 70 | | | | | | | | | | | | |
| E2-2 40X32 | 40 | 32 | 80 | | | | | | | | | | | | |
| E2-2 50X40 | 50 | 40 | 90 | | | | | | | | | | | | |

E2-3

Bussola di riduzione A cono Morse
 Reducing sleeve Morse taper
 Douille de réduction Cône Morse
 Reduzierhülse Morsekegel

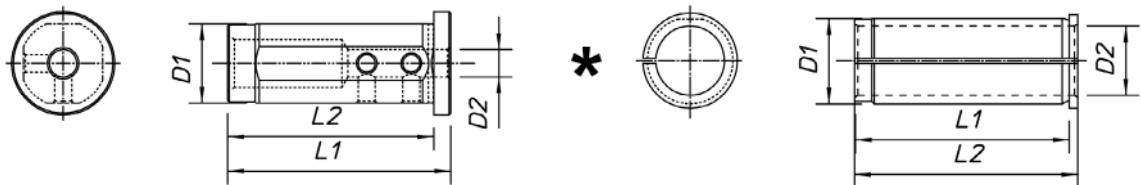

VDI


| Codice - code - code - Bestell Nr. | D6 | CM | L1 | Note - Notes - Notes - Bemerkungen |
|------------------------------------|----|----|-----|--------------------------------------|
| E2-3 32X1 | 32 | 1 | 90 | |
| E2-3 32X2 | 32 | 2 | 90 | |
| E2-3 32X3* | 32 | 3 | 100 | * Le bussole sono senza asola |
| E2-3 40X2 | 40 | 2 | 90 | * Adaptors without slot |
| E2-3 40X3 | 40 | 3 | 100 | * Douilles de réduction sans rainure |
| E2-3 40X4* | 40 | 4 | 120 | * Reduzierhülsen ohne Langschlitz |
| E2-3 50X2 | 50 | 2 | 90 | |
| E2-3 50X3 | 50 | 3 | 100 | |
| E2-3 50X4* | 50 | 4 | 120 | |



| Codice - code - code - Bestell Nr. | D1 | D2 | D3 | L1 | L2 | | | | | | | | | | | | | | |
|------------------------------------|----|----|----|----|----|--|--|--|--|--|--|--|--|--|--|--|--|--|--|
| E6-2 20X6 | 20 | 6 | 24 | 30 | 4 | | | | | | | | | | | | | | |
| E6-2 20X8 | 20 | 8 | 24 | 30 | 4 | | | | | | | | | | | | | | |
| E6-2 20X10 | 20 | 10 | 24 | 30 | 4 | | | | | | | | | | | | | | |
| E6-2 20X12 | 20 | 12 | 24 | 30 | 4 | | | | | | | | | | | | | | |
| E6-2 20X15 | 20 | 15 | 24 | 30 | 4 | | | | | | | | | | | | | | |
| E6-2 20X16 | 20 | 16 | 24 | 30 | 4 | | | | | | | | | | | | | | |
| E6-2 25X6 | 25 | 6 | 29 | 40 | 4 | | | | | | | | | | | | | | |
| E6-2 25X8 | 25 | 8 | 29 | 40 | 4 | | | | | | | | | | | | | | |
| E6-2 25X10 | 25 | 10 | 29 | 40 | 4 | | | | | | | | | | | | | | |
| E6-2 25X12 | 25 | 12 | 29 | 40 | 4 | | | | | | | | | | | | | | |
| E6-2 25X15 | 25 | 15 | 29 | 40 | 4 | | | | | | | | | | | | | | |
| E6-2 25X16 | 25 | 16 | 29 | 40 | 4 | | | | | | | | | | | | | | |
| E6-2 25X20 | 25 | 20 | 29 | 40 | 4 | | | | | | | | | | | | | | |
| E6-2 30X8 | 30 | 8 | 34 | 50 | 4 | | | | | | | | | | | | | | |
| E6-2 30X10 | 30 | 10 | 34 | 50 | 4 | | | | | | | | | | | | | | |
| E6-2 30X12 | 30 | 12 | 34 | 50 | 4 | | | | | | | | | | | | | | |
| E6-2 30X15 | 30 | 15 | 34 | 50 | 4 | | | | | | | | | | | | | | |
| E6-2 30X16 | 30 | 16 | 34 | 50 | 4 | | | | | | | | | | | | | | |
| E6-2 30X20 | 30 | 20 | 34 | 50 | 4 | | | | | | | | | | | | | | |
| E6-2 32X8 | 32 | 8 | 36 | 50 | 4 | | | | | | | | | | | | | | |
| E6-2 32X10 | 32 | 10 | 36 | 50 | 4 | | | | | | | | | | | | | | |
| E6-2 32X12 | 32 | 12 | 36 | 50 | 4 | | | | | | | | | | | | | | |
| E6-2 32X15 | 32 | 15 | 36 | 50 | 4 | | | | | | | | | | | | | | |
| E6-2 32X16 | 32 | 16 | 36 | 50 | 4 | | | | | | | | | | | | | | |
| E6-2 32X20 | 32 | 20 | 36 | 50 | 4 | | | | | | | | | | | | | | |
| E6-2 32X25 | 32 | 25 | 36 | 50 | 4 | | | | | | | | | | | | | | |
| E6-2 40X10 | 40 | 10 | 44 | 78 | 4 | | | | | | | | | | | | | | |
| E6-2 40X12 | 40 | 12 | 44 | 78 | 4 | | | | | | | | | | | | | | |
| E6-2 40X15 | 40 | 15 | 44 | 78 | 4 | | | | | | | | | | | | | | |
| E6-2 40X16 | 40 | 16 | 44 | 78 | 4 | | | | | | | | | | | | | | |
| E6-2 40X20 | 40 | 20 | 44 | 78 | 4 | | | | | | | | | | | | | | |
| E6-2 40X25 | 40 | 25 | 44 | 78 | 4 | | | | | | | | | | | | | | |
| E6-2 40X32 | 40 | 32 | 44 | 78 | 4 | | | | | | | | | | | | | | |


VDI



| Codice - code code - Bestell Nr. | D1 | D2 | L1 | L2 |
|-------------------------------------|----|----|-----|-----|
| 739.0125.008 | 25 | 8 | 65 | 60 |
| 739.0125.010 | 25 | 10 | 65 | 60 |
| 739.0125.012 | 25 | 12 | 65 | 60 |
| 739.0125.016* | 25 | 16 | 60 | 55 |
| 739.0132.008 | 32 | 8 | 90 | 85 |
| 739.0132.010 | 32 | 10 | 90 | 85 |
| 739.0132.012 | 32 | 12 | 90 | 85 |
| 739.0132.016 | 32 | 16 | 90 | 85 |
| 739.0132.020 | 32 | 20 | 90 | 85 |
| 739.0132.025* | 32 | 25 | 90 | 85 |
| 739.0140.008 | 40 | 8 | 110 | 105 |
| 739.0140.010 | 40 | 10 | 110 | 105 |
| 739.0140.012 | 40 | 12 | 110 | 105 |
| 739.0140.016 | 40 | 16 | 110 | 105 |
| 739.0140.020 | 40 | 20 | 110 | 105 |
| 739.0140.025 | 40 | 25 | 110 | 103 |
| 739.0140.032* | 40 | 32 | 110 | 105 |

| Codice - code code - Bestell Nr. | D1 | D2 | L1 | L2 |
|-------------------------------------|----|----|-----|-----|
| 739.0150.012 | 50 | 12 | 130 | 125 |
| 739.0150.016 | 50 | 16 | 130 | 125 |
| 739.0150.020 | 50 | 20 | 130 | 125 |
| 739.0150.025 | 50 | 25 | 130 | 123 |
| 739.0150.032 | 50 | 32 | 130 | 125 |
| 739.0150.040* | 50 | 40 | 130 | 125 |
| 739.0160.016 | 60 | 16 | 140 | 135 |
| 739.0160.020 | 60 | 20 | 140 | 135 |
| 739.0160.025 | 60 | 25 | 140 | 135 |
| 739.0160.032 | 60 | 32 | 140 | 135 |
| 739.0160.040 | 60 | 40 | 140 | 135 |
| 739.0160.050* | 60 | 50 | 140 | 135 |
| 739.0180.025 | 80 | 25 | 150 | 143 |
| 739.0180.032 | 80 | 32 | 150 | 145 |
| 739.0180.040 | 80 | 40 | 150 | 145 |
| 739.0180.050 | 80 | 50 | 150 | 145 |
| 739.0180.060 | 80 | 60 | 150 | 145 |

* Le bussole sono con intaglio * Adaptors with notch * Douilles de réduction avec entaille * Reduzierhülsen mit Kerbe

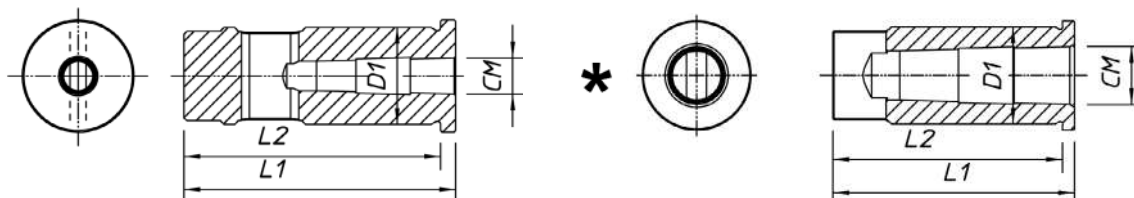


*

VDI

739.21

Bussola di riduzione A cono Morse
 Reducing sleeve Morse taper
 Douille de réduction Cône Morse
 Reduzierhülse Morsekegel

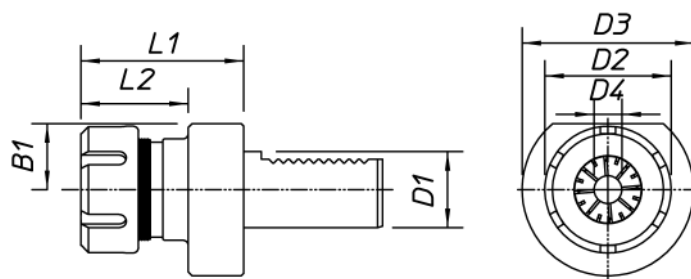


| Codice - code - code - Bestell Nr. | D1 | CM | L1 | L2 | | | | | | | | | | | |
|------------------------------------|----|----|-----|-----|--|--|--|--|--|--|--|--|--|--|--|
| 739.2132.001 | 32 | 1 | 90 | 85 | | | | | | | | | | | |
| 739.2132.002 | 32 | 2 | 90 | 85 | | | | | | | | | | | |
| 739.2132.003* | 32 | 3 | 100 | 95 | | | | | | | | | | | |
| 739.2140.002 | 40 | 2 | 100 | 95 | | | | | | | | | | | |
| 739.2140.003* | 40 | 3 | 100 | 95 | | | | | | | | | | | |
| 739.2140.004* | 40 | 4 | 120 | 115 | | | | | | | | | | | |
| 739.2150.002 | 50 | 2 | 120 | 115 | | | | | | | | | | | |
| 739.2150.003 | 50 | 3 | 120 | 115 | | | | | | | | | | | |
| 739.2150.004* | 50 | 4 | 120 | 115 | | | | | | | | | | | |
| 739.2160.003 | 60 | 3 | 140 | 130 | | | | | | | | | | | |
| 739.2160.004 | 60 | 4 | 140 | 130 | | | | | | | | | | | |
| 739.2160.005* | 60 | 5 | 155 | 145 | | | | | | | | | | | |

* Le bussole sono senza asola * Adaptors without slot * Douilles de réduction sans rainure * Reduzierhülsen ohne Langschlitz

E4

Portautensile VDI Per pinze secondo DIN 6499/B, tipo ER/EX
 VDI toolholder For collets to DIN 6499/B, type ER/EX
 Porte-outil VDI Pour pinces selon DIN 6499/B, type ER/EX
 VDI Werkzeughalter Für Spannzangen nach DIN 6499/B, Typ ER/EX

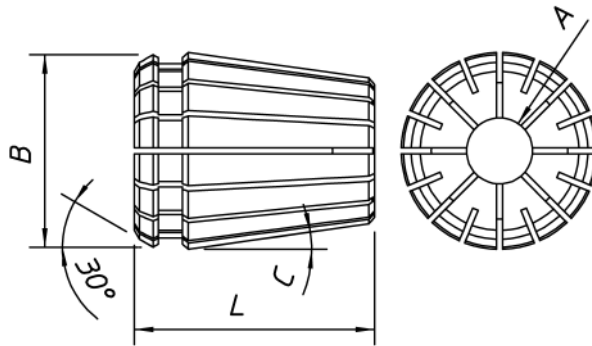


| Codice - code - code - Bestell Nr. | D1 | ER | D2 | D3 | D4 | B1 | L1 | L2 | | | | | | | |
|------------------------------------|----|----|----|-----|--------|------|----|----|--|--|--|--|--|--|--|
| E4 16-16 | 16 | 16 | 28 | 40 | 1÷10 | - | 48 | 13 | | | | | | | |
| E4 16-20 | 16 | 20 | 34 | 40 | 1÷13 | - | 48 | 13 | | | | | | | |
| E4 20-16 | 20 | 16 | 34 | 50 | 1÷10 | - | 53 | 18 | | | | | | | |
| E4 20-25 | 20 | 25 | 42 | 50 | 1÷16 | - | 53 | 18 | | | | | | | |
| E4 30-25 | 30 | 25 | 50 | 68 | 1÷16 | 28 | 65 | 22 | | | | | | | |
| E4 30-32 | 30 | 32 | 50 | 68 | 2,5÷20 | 28 | 65 | 22 | | | | | | | |
| E4 30-40 | 30 | 40 | 63 | 68 | 4÷26 | 28 | 65 | 22 | | | | | | | |
| E4 40-25 | 40 | 25 | 42 | 83 | 1÷16 | 32,5 | 65 | 22 | | | | | | | |
| E4 40-32 | 40 | 32 | 50 | 83 | 2,5÷20 | 32,5 | 65 | 22 | | | | | | | |
| E4 40-40 | 40 | 40 | 63 | 83 | 4÷26 | 32,5 | 65 | 22 | | | | | | | |
| E4 50-32 | 50 | 32 | 50 | 98 | 2,5÷20 | 35 | 84 | 30 | | | | | | | |
| E4 50-40 | 50 | 40 | 63 | 98 | 4÷26 | 35 | 75 | 30 | | | | | | | |
| E4 60-60 | 60 | 60 | 83 | 123 | 12÷40 | 42,5 | 85 | 30 | | | | | | | |

E4-1

Pinze
Collets
Pincers
Präzisionsspannzangen

Secondo DIN 6499/B, tipo ER/EX
To DIN 6499/B, tupe ER/EX
Selon DIN 6499/B, type ER/EX
Nach DIN 6499/B, Typ ER/EX



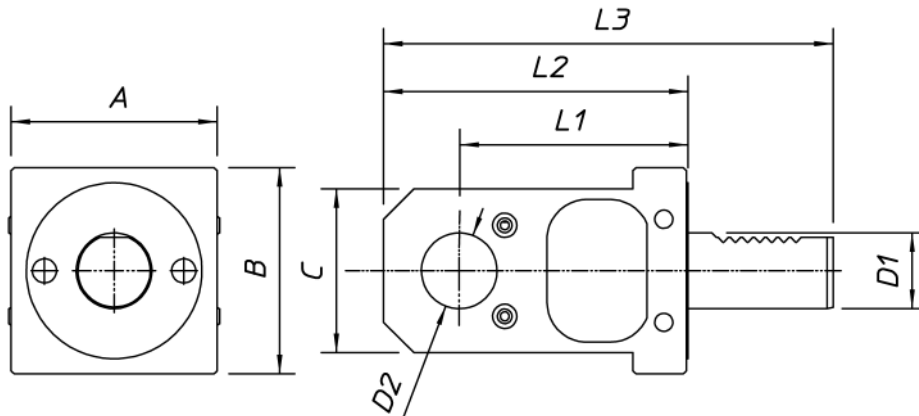
| Codice - code - code - Bestell Nr. | A | B | C | L | Note - Notes - Notes - Bemerkungen |
|------------------------------------|--------|----|----|----|--|
| E4-1 16/* | 1÷10 | 17 | 8° | 27 | Ø A aumenta di 0,5 mm per Ø A da 1 a 3 mm. Aumenta di 1 mm per Ø A oltre 3 mm. |
| E4-1 20/* | 1÷13 | 21 | 8° | 31 | Ø A increases 0,5 mm for Ø A from 1 to 3 mm. It increases 1 mm for Ø A over 3 mm. |
| E4-1 25/* | 1÷16 | 26 | 8° | 35 | Ø A augmente 0,5 mm pour Ø A de 1 à 3 mm. Ø Augmente 1 mm pour A après 3 mm. |
| E4-1 32/* | 2,5÷20 | 33 | 8° | 40 | Ø A steigt 0,5 mm für Ø A von 1 bis 3 mm. Er steigt 1 mm für A über 3 mm. |
| E4-1 40/* | 3÷26 | 41 | 8° | 46 | Ø A aumenta 1 mm per volta. Ø A increases 1 mm every time. Ø A augmente 1 mm chaque fois. Ø A steigt von 1 mm jedesmal. |

* Indicare sull'ordine il codice e il Ø A (Es.: E4-1 20/1,5) * When ordering please give code and Ø A (Ex.: E4-1 20/1,5)
* À la commande spécifier code et Ø A (Ex.: E4-1 20/1,5) * Im Bestellfalle code und Ø A angeben (Z.B.: E4-1 20/1,5)

E6

Portautensile VDI
VDI toolholder
Porte-outil VDI
VDI Werkzeughalter

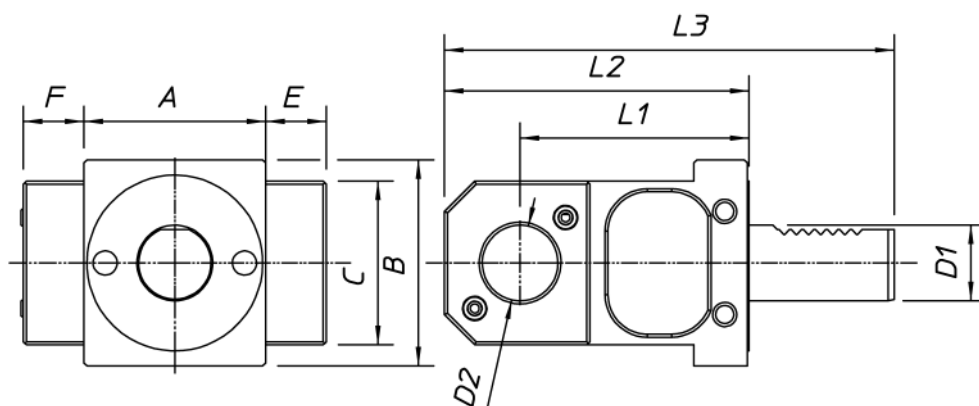
Per bareni
For boring bars
Pour outlils à aléser
Für Bohrstrangen

VDI


| Codice - code - code - Bestell Nr. | D1 | D2 | L1 | L2 | L3 | A | B | | | | | | |
|------------------------------------|----|----|-----|-----|-----|----|-----|--|--|--|--|--|--|
| E6 30X25/70 | 30 | 25 | 85 | 110 | 165 | 70 | 70 | | | | | | |
| E6 30X32/70 | 30 | 32 | 85 | 110 | 165 | 70 | 70 | | | | | | |
| E6 30X20/70X115 | 30 | 20 | 115 | 135 | 190 | 70 | 70 | | | | | | |
| E6 30X25/70X115 | 30 | 25 | 115 | 135 | 190 | 70 | 70 | | | | | | |
| E6 30X32/70X115 | 30 | 32 | 115 | 143 | 198 | 70 | 70 | | | | | | |
| E6 30X40/70X115 | 30 | 40 | 115 | 150 | 205 | 70 | 70 | | | | | | |
| E6 50X50/100X110 | 50 | 50 | 110 | 150 | 228 | 98 | 100 | | | | | | |

E6

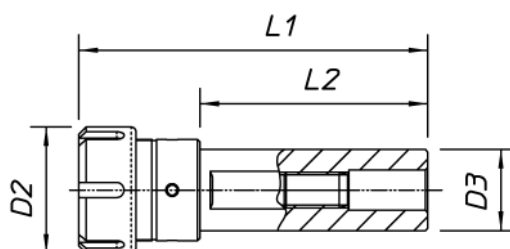
| | | |
|--------------------|----------------------|--------|
| Portautensile VDI | Per bareni | Doppio |
| VDI toolholder | For boring bars | Double |
| Porte-outil VDI | Pour outlis à aléser | Double |
| VDI Werkzeughalter | Für Bohrstangen | 2 Fach |



| Codice - code - code - Bestell Nr. | D1 | D2 | L1 | L2 | L3 | A | B | C | E | F | | | |
|------------------------------------|----|----|-----|-----|-----|-----|-----|----|------|------|--|--|--|
| E6 30X25/140 | 30 | 25 | 85 | 110 | 165 | 70 | 70 | 60 | 35 | 35 | | | |
| E6 30X25/95 | 30 | 25 | 85 | 110 | 165 | 70 | 70 | 60 | 12,5 | 12,5 | | | |
| E6 30X32/140 | 30 | 32 | 85 | 110 | 165 | 70 | 70 | 60 | 35 | 35 | | | |
| E6 30X32/95 | 30 | 32 | 85 | 110 | 165 | 70 | 70 | 60 | 12,5 | 12,5 | | | |
| E6 30X32/140X115 | 30 | 32 | 115 | 143 | 198 | 70 | 70 | 70 | - | 70 | | | |
| E6 50X50/190X140 | 50 | 50 | 140 | 180 | 258 | 100 | 100 | 85 | - | 91 | | | |

VDI
E6-1

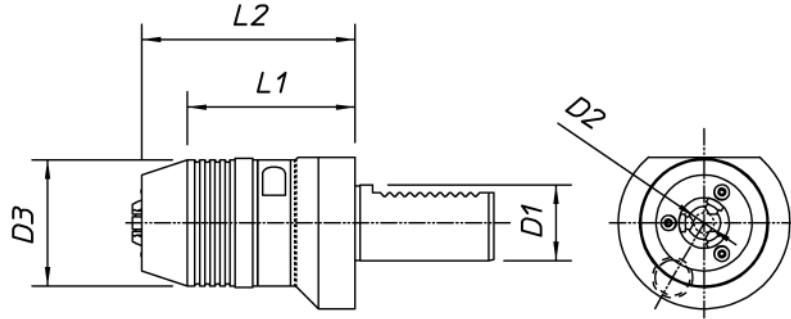
| | | |
|------------------|------------------------|------------------|
| Portapinza | Con attacco cilindrico | Secondo DIN 6499 |
| Collets chuck | With cylindrical shaft | To DIN 6499 |
| Porte-pinces | A queque cylindrique | Selon DIN 6499 |
| Spannzangefutter | Mit Zylinderschaft | Nach DIN 6499 |



| Codice - code - code - Bestell Nr. | D2 | D3 | ER | L1 | L2 | | | | | | | | |
|------------------------------------|----|----|----|-----|-----|--|--|--|--|--|--|--|--|
| E6-1 32-25 | 42 | 32 | 25 | 120 | 80 | | | | | | | | |
| E6-1 40-25 | 42 | 40 | 25 | 120 | 88 | | | | | | | | |
| E6-1 32-32 | 50 | 32 | 32 | 142 | 90 | | | | | | | | |
| E6-1 40-32 | 50 | 40 | 32 | 142 | 90 | | | | | | | | |
| E6-1 40-40 | 63 | 40 | 40 | 160 | 100 | | | | | | | | |
| E6-1 50-40 | 63 | 50 | 40 | 160 | 100 | | | | | | | | |

E7

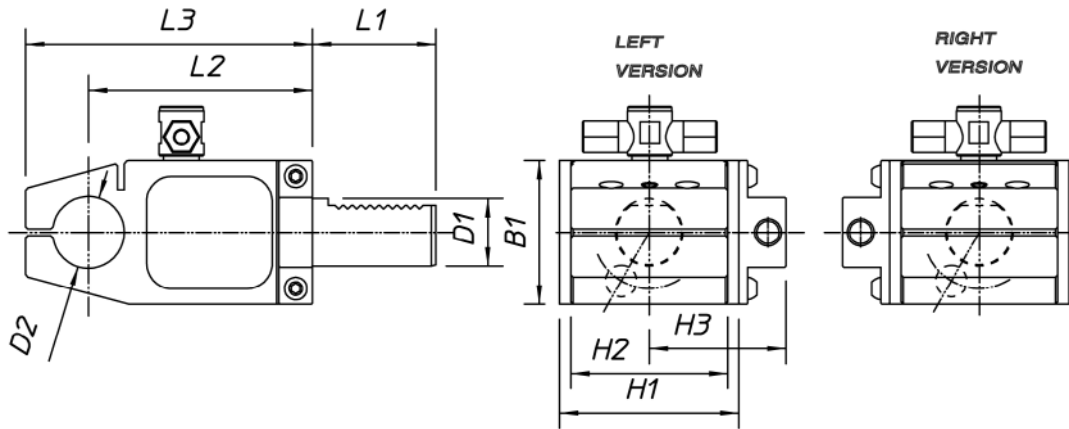
Mandrino VDI a chiusura rapida
 VDI quick action drill chuck
 Mandrin à serrage rapide VDI
 VDI Schnellspann-Bohrfutter



| Codice - code - code - Bestell Nr. | D1 | D2 | D3 | L1 | L2 | | | | | | | | | |
|------------------------------------|----|------|----|----|----|--|--|--|--|--|--|--|--|--|
| E7-20 1÷13 | 20 | 1÷13 | 57 | 82 | 88 | | | | | | | | | |
| E7-30 1÷13 | 30 | 1÷13 | 57 | 82 | 88 | | | | | | | | | |
| E7-40 1÷13 | 40 | 1÷13 | 57 | 82 | 91 | | | | | | | | | |
| E7-30 3÷16 | 30 | 3÷16 | 57 | 82 | 93 | | | | | | | | | |
| E7-40 3÷16 | 40 | 3÷16 | 57 | 85 | 96 | | | | | | | | | |

E9

Portautensile VDI Per barenì Con serraggio ad intaglio
 VDI toolholder For boring bars With slotted clamp
 Porte-outil VDI Pour outlis à aléser Avec serrage à fente
 VDI Werkzeughalter Für Bohrstangen Mit Klemmung

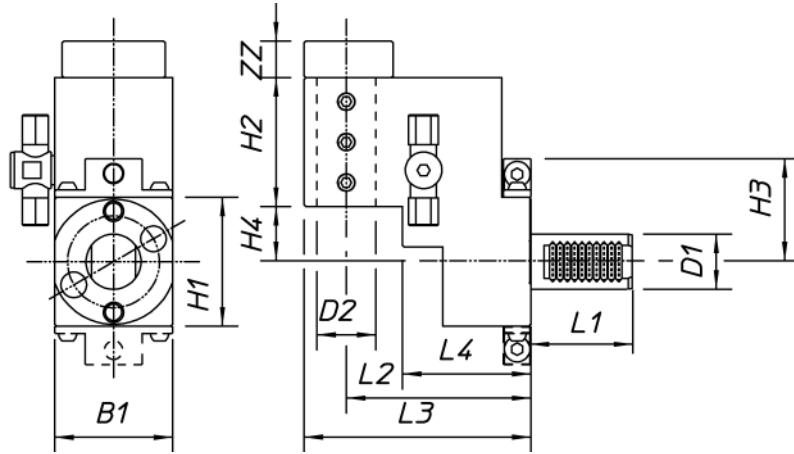


| Codice - code - code - Bestell Nr. | D1 | L1 | D2 | B1 | H1 | H2 | H3 | L2 | L3 | | | | | |
|------------------------------------|----|----|----|----|----|----|------|-----|------|--|--|--|--|--|
| E9 20-25/75 | 20 | 40 | 25 | 54 | 54 | 48 | 42 | 75 | 99,5 | | | | | |
| E9 30-25/85 | 30 | 55 | 25 | 64 | 70 | 70 | 56 | 85 | 113 | | | | | |
| E9 30-32/85 | 30 | 55 | 32 | 64 | 70 | 70 | 56 | 85 | 113 | | | | | |
| E9 30-25/100 | 30 | 55 | 25 | 64 | 70 | 70 | 56 | 100 | 128 | | | | | |
| E9 30-32/100 | 30 | 55 | 32 | 64 | 70 | 70 | 56 | 100 | 128 | | | | | |
| E9 40-32/100 | 40 | 63 | 32 | 76 | 85 | 85 | 67,5 | 100 | 132 | | | | | |
| E9 40-32/120 | 40 | 63 | 32 | 76 | 85 | 85 | 67,5 | 120 | 152 | | | | | |

VDI

E9 A

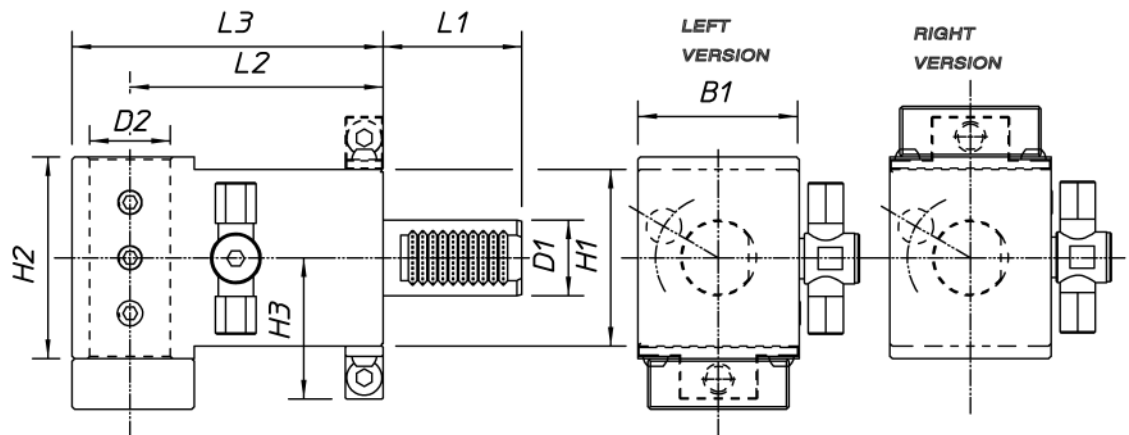
| | | |
|--|--|---|
| Portautensile VDI VDI toolholder Porte-outil VDI VDI Werkzeughalter | Per bareni For boring bars Pour outlis à aléser Für Bohrstangen | Arretrato Rear offset Décalée en arrière Zurückgesetzt |
|--|--|---|



| Codice - code - code - Bestell Nr. | D1 | L1 | D2 | B1 | H1 | H2 | H3 | H4 | L2 | L3 | L4 | ZZ |
|------------------------------------|----|----|----|----|----|----|------|----|-----|-----|----|----|
| E9 A 30-32/100 | 30 | 55 | 32 | 64 | 70 | 70 | 56 | 30 | 100 | 123 | 70 | 20 |
| E9 A 40-40/100 | 40 | 63 | 40 | 85 | 85 | 85 | 67,5 | 40 | 100 | 132 | 63 | 20 |
| E9 A 40-40/120 | 40 | 63 | 40 | 85 | 85 | 85 | 67,5 | 40 | 120 | 152 | 75 | 20 |


E9 I

| | |
|--|--|
| Portautensile VDI VDI toolholder Porte-outil VDI VDI Werkzeughalter | Per bareni For boring bars Pour outlis à aléser Für Bohrstangen |
|--|--|



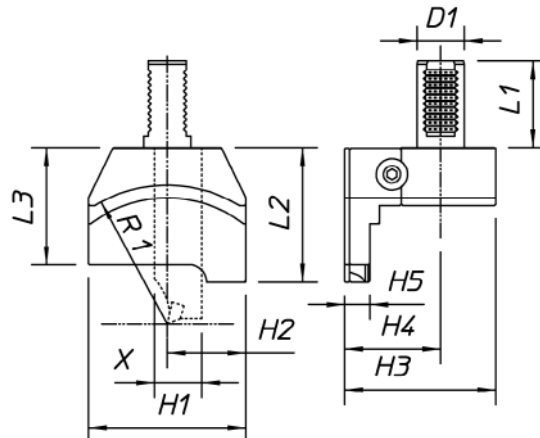
| Codice - code - code - Bestell Nr. | D1 | L1 | D2 | B1 | H1 | H2 | H3 | L2 | L3 |
|------------------------------------|----|----|----|----|-----|-----|------|-----|------|
| E9 I 20-25/75 | 20 | 40 | 25 | 54 | 54 | 60 | 42 | 75 | 97,5 |
| E9 I 25-25/75 | 25 | 48 | 25 | 54 | 60 | 60 | 48 | 75 | 97,5 |
| E9 I 30-32/85 | 30 | 55 | 32 | 64 | 70 | 70 | 56 | 85 | 108 |
| E9 I 30-32/100 | 30 | 55 | 32 | 64 | 70 | 70 | 56 | 100 | 123 |
| E9 I 40-40/100 | 40 | 63 | 40 | 76 | 85 | 85 | 67,5 | 100 | 132 |
| E9 I 40-40/120 | 40 | 63 | 40 | 76 | 85 | 85 | 67,5 | 120 | 152 |
| E9 I 50-50/120 | 50 | 78 | 50 | 85 | 100 | 100 | 73,5 | 120 | 160 |



E9 T

Portautensile VDI
VDI toolholder
Porte-outil VDI
VDI Werkzeughalter

Per troncatura
For parting
Pour coupure
Für Trennen



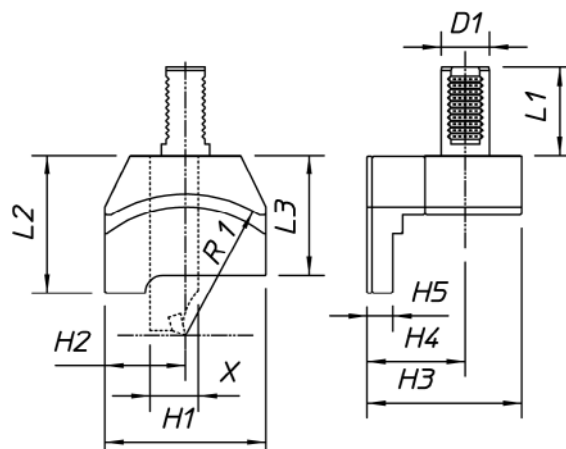
| Codice - code - code - Bestell Nr. | D1 | L1 | X | H1 | H2 | H3 | H4 | H5 | L2 | L3 | R1 | | |
|------------------------------------|----|----|----|-----|----|----|----|------|------|----|----|--|--|
| E9 T 20-26 | 20 | 40 | 26 | 94 | 47 | 95 | 60 | 15,5 | 85,5 | 75 | 88 | | |
| E9 T 30-26 | 30 | 55 | 26 | 100 | 50 | 95 | 60 | 15,5 | 85,5 | 75 | 88 | | |
| E9 T 30-32 | 30 | 55 | 32 | 100 | 50 | 95 | 60 | 15,5 | 85,5 | 75 | 88 | | |
| E9 T 40-26 | 40 | 63 | 26 | 100 | 50 | 95 | 60 | 15,5 | 85,5 | 75 | 88 | | |
| E9 T 40-32 | 40 | 63 | 32 | 100 | 50 | 95 | 60 | 15,5 | 88,5 | 78 | 88 | | |

E9 TR

Portautensile VDI
VDI toolholder
Porte-outil VDI
VDI Werkzeughalter

Per troncatura
For parting
Pour coupure
Für Trennen

Rovesciato
Upside-down
Renversé
Überkopf



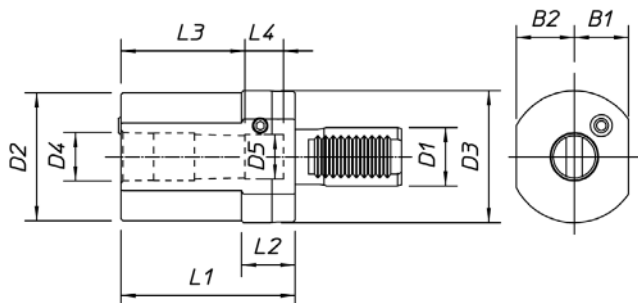
| Codice - code - code - Bestell Nr. | D1 | L1 | X | H1 | H2 | H3 | H4 | H5 | L2 | L3 | R1 | | |
|------------------------------------|----|----|----|-----|----|----|----|------|------|----|----|--|--|
| E9 TR 20-26 | 20 | 40 | 26 | 94 | 47 | 95 | 60 | 15,5 | 85,5 | 75 | 88 | | |
| E9 TR 30-26 | 30 | 55 | 26 | 100 | 50 | 95 | 60 | 15,5 | 85,5 | 75 | 88 | | |
| E9 TR 30-32 | 30 | 55 | 32 | 100 | 50 | 95 | 60 | 15,5 | 85,5 | 75 | 88 | | |
| E9 TR 40-26 | 40 | 63 | 26 | 100 | 50 | 95 | 60 | 15,5 | 85,5 | 75 | 88 | | |
| E9 TR 40-32 | 40 | 63 | 32 | 100 | 50 | 95 | 60 | 15,5 | 88,5 | 78 | 88 | | |

VDI

F

Portautensile VDI
VDI toolholder
Porte-outil VDI
VDI Werkzeughalter

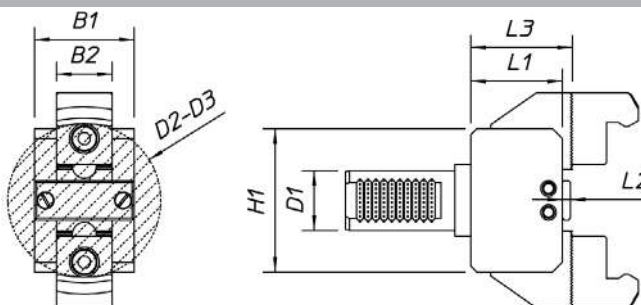
Con sede conica
With taper seat
Avec siège conique
Mit Kegelaufnahme



| Codice - code - code - Bestell Nr. | D1 | D2 | D3 | D4 | D5 | B1 | B2 | L1 | L2 | L3 | L4 | CM |
|------------------------------------|-----------|----|-----|--------|------|------|----|----|----|----|----|----------|
| F 20 MK-D1 | 20 | - | 50 | 12,065 | 13,5 | - | 23 | 23 | - | 16 | 12 | 1 |
| F 30 MK-D1 | 30 | - | 68 | 12,065 | 13,5 | 28 | 30 | 27 | - | 16 | 12 | 1 |
| F 30 MK-D2 | 30 | - | 68 | 17,780 | 19,5 | 28 | 30 | 27 | - | 20 | 12 | 2 |
| F 30 MK-D3 | 30 | 66 | 68 | 23,825 | 23 | 28 | 30 | 90 | 27 | 64 | 20 | 3 |
| F 40 MK-D1 | 40 | 55 | 83 | 12,065 | 13,5 | 32,5 | - | 36 | 22 | 16 | 12 | 1 |
| F 40 MK-D2 | 40 | 55 | 83 | 17,780 | 19,5 | 32,5 | - | 36 | 22 | 20 | 12 | 2 |
| F 40 MK-D3 | 40 | 58 | 83 | 23,825 | 24,5 | 32,5 | - | 36 | 22 | 30 | 12 | 3 |
| F 40 MK-D4 | 40 | 68 | 83 | 31,267 | 32 | 32,5 | - | 80 | 22 | 40 | 14 | 4 |
| F 50 MK-D2 | 50 | 55 | 98 | 17,780 | 19,5 | 35 | - | 36 | 30 | 20 | 12 | 2 |
| F 50 MK-D3 | 50 | 58 | 98 | 23,825 | 24,5 | 35 | - | 36 | 30 | 30 | 12 | 3 |
| F 50 MK-D4 | 50 | 68 | 98 | 31,267 | 32 | 35 | - | 50 | 30 | 40 | 14 | 4 |
| F 60 MK-D3 | 60 | 58 | 123 | 23,825 | 24,5 | 42,5 | - | 36 | 30 | 30 | 12 | 3 |
| F 60 MK-D4 | 60 | 68 | 123 | 31,267 | 32 | 42,5 | - | 50 | 30 | 40 | 14 | 4 |
| F 60 MK-D5 | 60 | 98 | 123 | 44,399 | 44 | 42,5 | - | 63 | 30 | 52 | 16 | 5 |


VDI
H1

Stringibarra VDI
VDI bar clamp
Serre barre VDI
VDI Stangengreifer

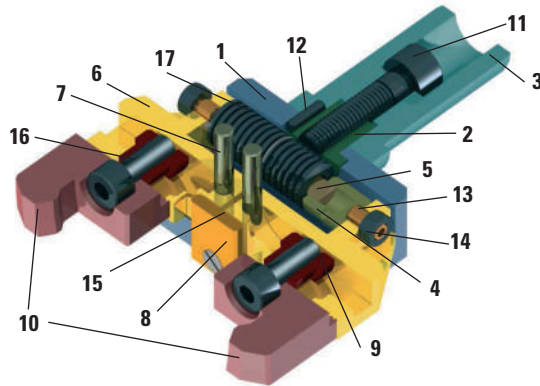


| Codice - code - code - Bestell Nr. | D1 | D2 | D3 | B1 | B2 | H1 | L1 | L2 | L3 |
|------------------------------------|-----------|-------|--------|----|----|------------|----|----|----|
| H1 20/72 | 20 | 6÷56 | 54÷110 | 50 | 28 | 72 | 46 | 4 | 51 |
| H1 20/110 | 20 | 10÷60 | 54÷110 | 60 | 28 | 110 | 48 | 4 | 53 |
| H1 30/72 | 30 | 6÷56 | 54÷110 | 50 | 28 | 72 | 46 | 4 | 51 |
| H1 30/110 | 30 | 10÷60 | 54÷110 | 60 | 28 | 110 | 48 | 4 | 53 |
| H1 40/72 | 40 | 6÷56 | 54÷110 | 50 | 28 | 72 | 46 | 4 | 51 |
| H1 40/110 | 40 | 10÷60 | 54÷110 | 60 | 28 | 110 | 48 | 4 | 53 |
| H1 50/130 | 50 | 10÷75 | 62÷125 | 65 | 28 | 130 | 67 | 5 | 73 |
| H1 60/130 | 60 | 10÷75 | 62÷125 | 65 | 28 | 130 | 67 | 5 | 73 |



• Per ottenere l'escursione d2-d3 vengono sempre fornite 2 coppie di griffe. • We always supply 2 jaw pairs to obtain d2-d3 range. • Pour obtenir l'amplitude d2-d3 nous fournissons toujours 2 couples de mâchoires. • Um den d2-d3 Auslag zu erhalten liefern wir 2 Spannbackpaarungen.

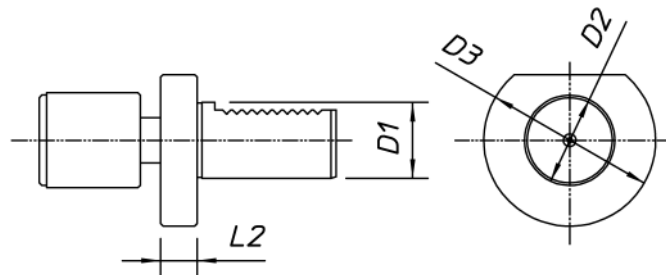
H1-1÷10
Componenti per stringibarra VDI

 Spare parts for VDI bar clamp
 Pièce de rechange pour serre barre VDI
 Ersatzteile für VDI Stangengreifer


| N° | Codice - code - code - Bestell Nr. | Articolo - article - article - Artikel | Dimensioni - dimensions - dimensions - Masse |
|----|------------------------------------|--|--|
| 1 | H1-1 ... | Corpo - body - corps - Körper | 110, 130 |
| 2 | H1-2 ... | Bussola - sleeve - douille - Buchse | Ø 12, 16, 20 |
| 3 | H1-3 ... | Gambo - shank - queue - Schaft | VDI 20, 30, 40, 50, 60 |
| 4 | H1-4 ... | Bussola - sleeve - douille - Buchse | Ø 15, 20 |
| 5 | H1-5 ... | Perno - pin - pivot - Zapfen | Ø 8X44, Ø 8X60, Ø 10X68 |
| 6 | H1-6 ... | Coppia basi griffe - jaw base pair - couple de bases pour mâchoires - Spannbackaufnahme paarung | 48X28, 54X28, 64X30 |
| 7 | H1-7 ... | Perno di snodo - fulcrum pin - joint - Drehzapfen | Ø 6X50, Ø 6X60, Ø 8X65 |
| 8 | H1-8 ... | Coperchio - cover - couvercle - Deckel | 50X20, 60X20, 65X25 |
| 9 | H1-9 ... | Dado - nut - écrou - Mutter | M8, M10 |
| 10 | H1-10 ... | Coppia griffe - jaw pair - couple de mâchoires - Spannbacke paarung | Chiusura - clamping - serrage - Klemmung Ø 6÷56, Ø 10÷60, Ø 10÷75, Ø 54÷110, Ø 62÷125 |

**11÷17 Articoli standard disponibili presso rivenditori - Standard articles available in retail shops -
 Éléments standard retrouvables chez ventes au détail - Standardeinheiten von Kleinhändlern verkauft**
VDI
L2

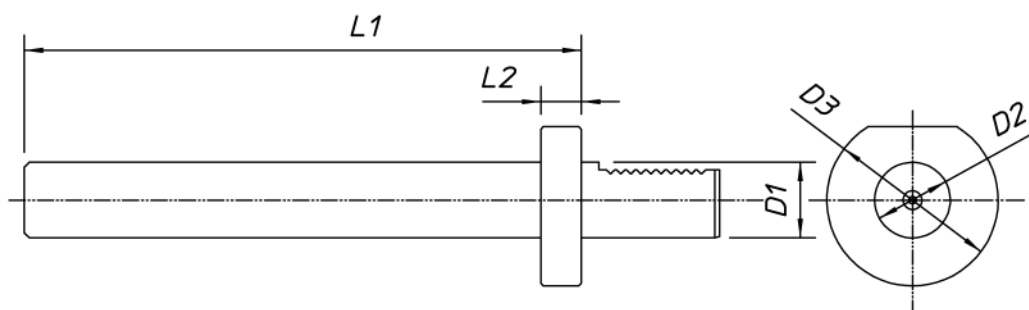
| Fermobarra VDI VDI stop bar Porte-outil VDI à butée VDI Stangenanschlag | Regolabile Adjustable Réglable Vestellbar | Ammortizzato Damped Amortie Gedämpft |
|--|--|---|
|--|--|---|



| Codice - code - code - Bestell Nr. | D1 | D2 | D3 | L2 | | | | | | | | | | |
|------------------------------------|----|----|----|----|--|--|--|--|--|--|--|--|--|--|
| L2 20 | 20 | 42 | 50 | 16 | | | | | | | | | | |
| L2 30 | 30 | 42 | 68 | 16 | | | | | | | | | | |
| L2 40 | 40 | 42 | 83 | 22 | | | | | | | | | | |
| L2 50 | 50 | 42 | 98 | 30 | | | | | | | | | | |

Y

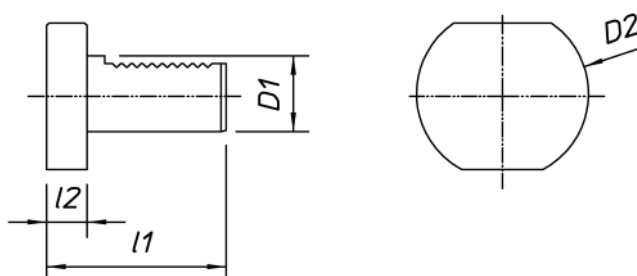
Spina di controllo VDI
 VDI control pin
 Épine de contrôle VDI
 VDI Prüfdorn



| Codice - code - code - Bestell Nr. | D1 | D2 | D3 | L1 | L2 | | | | | | | | |
|------------------------------------|-----------|----|-----|-----|----|--|--|--|--|--|--|--|--|
| Y 16 | 16 | 20 | 40 | 195 | 13 | | | | | | | | |
| Y 20 | 20 | 30 | 50 | 221 | 16 | | | | | | | | |
| Y 30 | 30 | 30 | 68 | 221 | 16 | | | | | | | | |
| Y 40 | 40 | 40 | 83 | 225 | 20 | | | | | | | | |
| Y 50 | 50 | 40 | 98 | 225 | 20 | | | | | | | | |
| Y 60 | 60 | 40 | 123 | 225 | 20 | | | | | | | | |

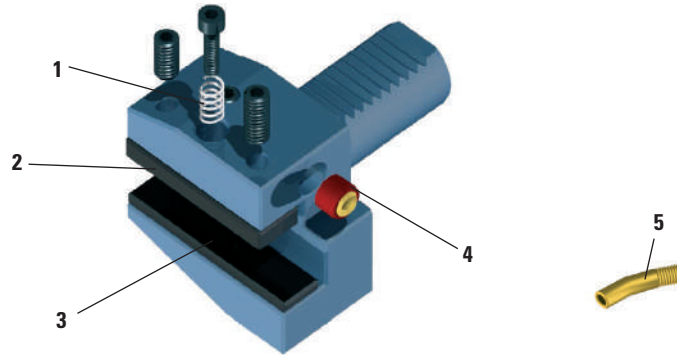
VDI
Z2

Tappo VDI
 VDI plug
 Bouchon VDI
 VDI Verschlußstopfen



| Acciaio - Steel - Acier - Stahl Codice - code - code - Bestell Nr. | D1 | D2 | L1 | L2 | Plastica - Plastic - Plastique - Kunststoff Codice - code - code - Bestell Nr. | | | | |
|---|-----------|-----|----|----|---|--|--|--|--|
| Z2-16 | 16 | 40 | 40 | 12 | Z2P-16 | | | | |
| Z2-20 | 20 | 50 | 50 | 12 | Z2P-20 | | | | |
| Z2-30 | 30 | 68 | 65 | 16 | Z2P-30 | | | | |
| Z2-40 | 40 | 83 | 74 | 20 | Z2P-40 | | | | |
| Z2-50 | 50 | 98 | 88 | 20 | Z2P-50 | | | | |
| Z2-60 | 60 | 123 | 96 | 20 | Z2P-60 | | | | |

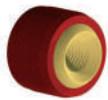
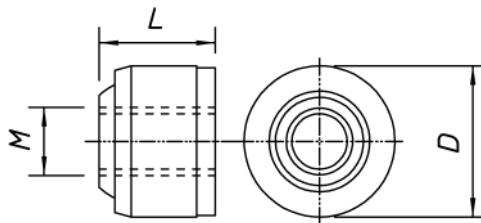
Componenti per portautensili VDI
 Spare parts for VDI toolholders
 Pièces de rechange pour porte-outils VDI
 Ersatzteile für VDI Werkzeughalter



| N° | Codice - code code - Bestell Nr. | Articolo - article - article - Artikel |
|----|-------------------------------------|---|
| 1 | 1102 | Molla - spring - ressort - Feder |
| 2 | PB | Piastrina di bloccaggio - stop plate - plaque de serrage - Sperrplatte |
| 3 | PR | Piastrina di riduzione - reducing plate - plaque de réduction - Reduzierplatte |
| 4 | Z3 | Ugello di refrigerazione - Cooling nozzle - Tuyère de réfrigération - Kühlmitteldüse |
| 5 | Z1 | Kit di 12 prolunghe per ugello di refrigerazione - Kit of 12 cooling nozzle extensions - Set de 12 rallonges pour tuyère de réfrigération - Bestell von 12 Verlängerungen für Kühlmitteldüse |

Z3

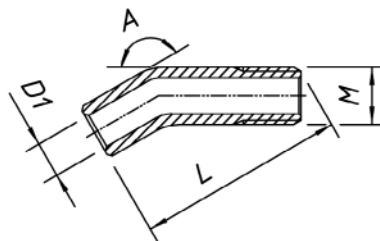
Ugello di refrigerazione
 Cooling nozzle
 Tuyère de réfrigération
 Kühlmitteldüse



| Codice - code - code - Bestell Nr. | D | L | M | | | | | | | | | | | |
|------------------------------------|----|---|---|--|--|--|--|--|--|--|--|--|--|--|
| Z3-8 | 8 | 6 | 4 | | | | | | | | | | | |
| Z3-12 | 12 | 8 | 5 | | | | | | | | | | | |
| Z3-14 | 14 | 9 | 8 | | | | | | | | | | | |

Z1

Kit di 12 prolunghe per ugello di refrigerazione
 Kit of 12 cooling nozzle extensions
 Set de 12 rallonges pour tuyère de réfrigération
 Bestell von 12 Verlängerungen für Kühlmitteldüse



| Codice - code - code - Bestell Nr. | M | D1 | L | A | | | | | | | | | | |
|------------------------------------|---|-----|----|------|--|--|--|--|--|--|--|--|--|--|
| Z1-4 | 4 | 2,5 | 19 | 150° | | | | | | | | | | |
| Z1-5 | 5 | 3 | 24 | 150° | | | | | | | | | | |
| Z1-8 | 8 | 5 | 29 | 150° | | | | | | | | | | |

VDI

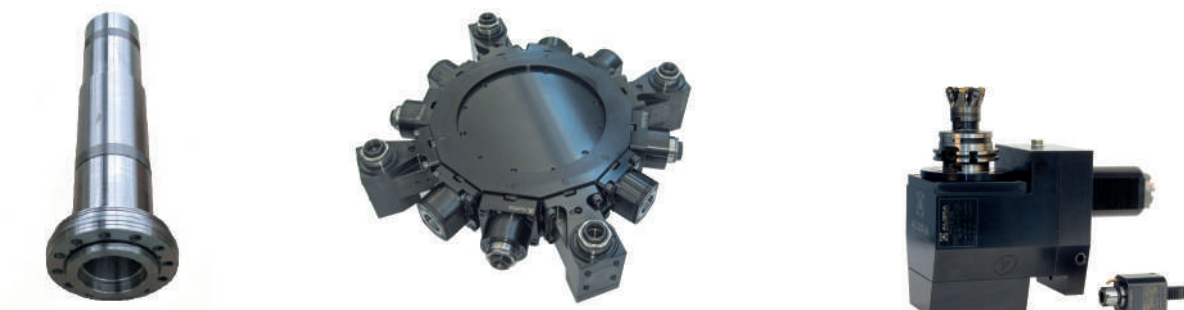
**La produzione:
il lavoro**
Production:
work

La produzione viene sviluppata nella moderna struttura a temperatura controllata di Almenno San Salvatore, mentre negli stabilimenti di Brembilla (I-Bergamo) vengono effettuate le lavorazioni di montaggio ed assemblaggio di gruppi completi. La superficie coperta delle strutture è di mq. 15.000, dei quali mq. 1.000 sono adibiti agli uffici amministrativi, commerciali e tecnici. L'attività produttiva si svolge con l'utilizzo di impianti e macchinari CNC costantemente aggiornati alle nuove tecnologie ed in grado di sviluppare le seguenti lavorazioni:

- Asportazione di truciolo
- Elettroerosione
- Tornitura orizzontale e verticale
- Fresatura universale 5 assi
- Fresatura/tornitura
- Lappatura per fori e piani
- Rettifica in tondo interno ed esterno
- Rettifica in tangenziale oltre al montaggio di gruppi e sottogruppi completi.

The production is developed in the modern, temperature controlled facility in Almenno San Salvatore, with Brembilla factories there are the assembly operations and the assembly of complete groups. The facilities covered area is of 15,000 sqm., 1,000 sqm. of which are used for the administrative commercial and technical offices. The production cycle takes place with the use of CNC fixtures and equipment constantly updated with new technologies and able to develop the following machining:

- *Chip machining*
- *Electroerosion*
- *Horizontal and vertical turning*
- *5-axis universal milling*
- *Milling/turning*
- *Lapping for holes and plane surfaces*
- *Cylindrical internal and external grinding*
- *Tangential grinding in addition to the assembly of complete groups and subassemblies.*



**Certificazioni:
uno standard
qualitativo**
Certification:
a quality
standard

La tecnologia avanzata svolge un ruolo chiave nell'obiettivo di incrementare il proprio valore, quello dei propri prodotti, dei servizi e della capacità del personale, operando nel rispetto delle norme UNI EN ISO 9001:2008 e ISO 14001:2004. L'alto livello di sensibilità verso il rispetto delle regole di sicurezza e dell'ambiente è presente ed immediatamente percepito in tutte le strutture aziendali.

Advanced technology plays a key role aiming to increase its value and the products, services and staff capacity value, operating in compliance with UNI EN ISO 9001:2008 and ISO 14001:2004.

The high level of sensitivity towards the observance of safety rules and the environment is present and perceived immediately in all facilities.



UNI EN ISO 9001:2008 - Cert. n° 0141



UNI EN ISO 14001:2004 - Cert. n° 0270A

Our partners:

AUSTRALIA

MODERN TOOLS (VIC.) PTY LTD
2/2 Newcastle Rd
Bayswater, Australia, VIC 3153
Phone: +61 03 9761 2929

BENELUX

BUCCI INDUSTRIES BENELUX
Alée Verte 12, B-5150 Floreffe (Belgium)
Phone: +32 496 10 10 90

BRASIL

BUCCI INDUSTRIES BRASIL
R. Dr. Augusto De Miranda, 910
Vila Pompeia, São Paulo,
Brasile, SP, 05026-000
Phone: +55 19 3515 7220

BULGARIA

RAIS LTD
Пловдив, Бул. Освобождение 3, Ет. 3,
Plovdiv, Bulgaria, 4019
Phone: +359 34444255

CHINA

**SHANGHAI LUOTUO
AUTOMATION TECHNOLOGY CO**
NORTH GUYANG ROAD,
SONGJIANG DISTRICT
SHANGHAI, Cina, 201620
Phone: +86 2164120150

CZECH REPUBLIC

MACH TRADE S.R.O.
Radiová 1431/2a
Praha, Repubblica Ceca, 102 00
Phone: +420 603293270

FRANCE

BUCCI INDUSTRIES FRANCE SARL
145 Rue Louis Armand
Cluses, Francia, 74300
Phone: +32 81450282

GERMANY

ITAL TECH SERVICE GMBH
Am Langenberg 13
Ingelheim Am Rhein, Germania, 55218
Phone: +49 1752955353

BUCCI INDUSTRIES DEUTSCHLAND

Stammheimer Str, 10
D-70806 Kornwestheim - Germany
Phone: +49 7154 8370 700

INDIA

DWIJ CONSULTANTS
25, Payal Park Part-1, Satellite Road
Gujarat , India, 380015
Phone: +91 7926760747

JAPAN

BUCCI INDUSTRIES JAPAN-IGM NIPPON
Kamoi, 6-10-1 Midori-Ku, 226-0003
Yokohama-Shi Kanagawa
Phone: +81 45 931 5096

NEW ZELAND

SCOTT MACHINERY LIMITED
51 Gilberthorpes Rd, Hei Hei
Christchurch, Nuova Zelanda, 8441
Phone: +64 3-349 2266

POLAND

Narzędzia Skrawające TOOLS Sp. z o.o.
Ul. Władysława Grabskiego 25,
Siechnice, Polonia, 55-011
Phone: +48 713435858

RUSSIA

SOLVER ENGINEERING LLC
43 STANKEVICHIA STR
VORONEZH, Russia, 394006
Phone: +7 4732777222

SPAIN

DAISA TECHNOLOGIC, S.L.
Urdaneta Bidea, 13
Zarautz, Gipuzkoa, Spagna, 20800
Phone: +34 943133739

SWEDEN

LICHRON AB
Norregårdsvägen 17
Skövde, Svezia, 541 34
Phone: +46 500445050

SWITZERLAND

BUCCI INDUSTRIES SWISS SA
Route Du Granval 3
Belprahon, Svizzera, 2744
Phone: +41 324934054

TAIWAN

MONGTEC PRECISION INC
No.156, FUTAIN 3RD ST
TAICHUNG CITY, Taiwan, 40241
Phone: +886 422653360

TURKEY

**SELEN MAKINE VE TEKNOLOJI
HIZ.SAN.TIC.LTD.STI**
İbrahim Ağa Cd. No:255
Gebze/Kocaeli, Turchia, 41400
Phone: +90 2626413208

UNITED KINGDOM

YMT LTD
Tuscan House George Smith Way
Lufton, Yeovil , Regno Unito, BA22 8QR
Phone: +44 1935 428375

TDT TECHNOLOGY LTD

Unit 20/Woodside Park
Rugby, Regno Unito, CV21 2NP
Phone: +44 1788570411

UNITED STATES

BUCCI INDUSTRIES USA, INC.
9332 Forsyth Park Dr
Charlotte, Stati Uniti, NC 28273
Phone: +1 7045838341



ALGRA S.p.A. Divisione accessori
Via Manzoni, 41 24031 Almenno S. Salvatore (BG)
Tel. +39 035.64.20.51 • Fax +39 035.64.01.28
algra.accessori@algra.it - www.algra.it