



DIN 1809

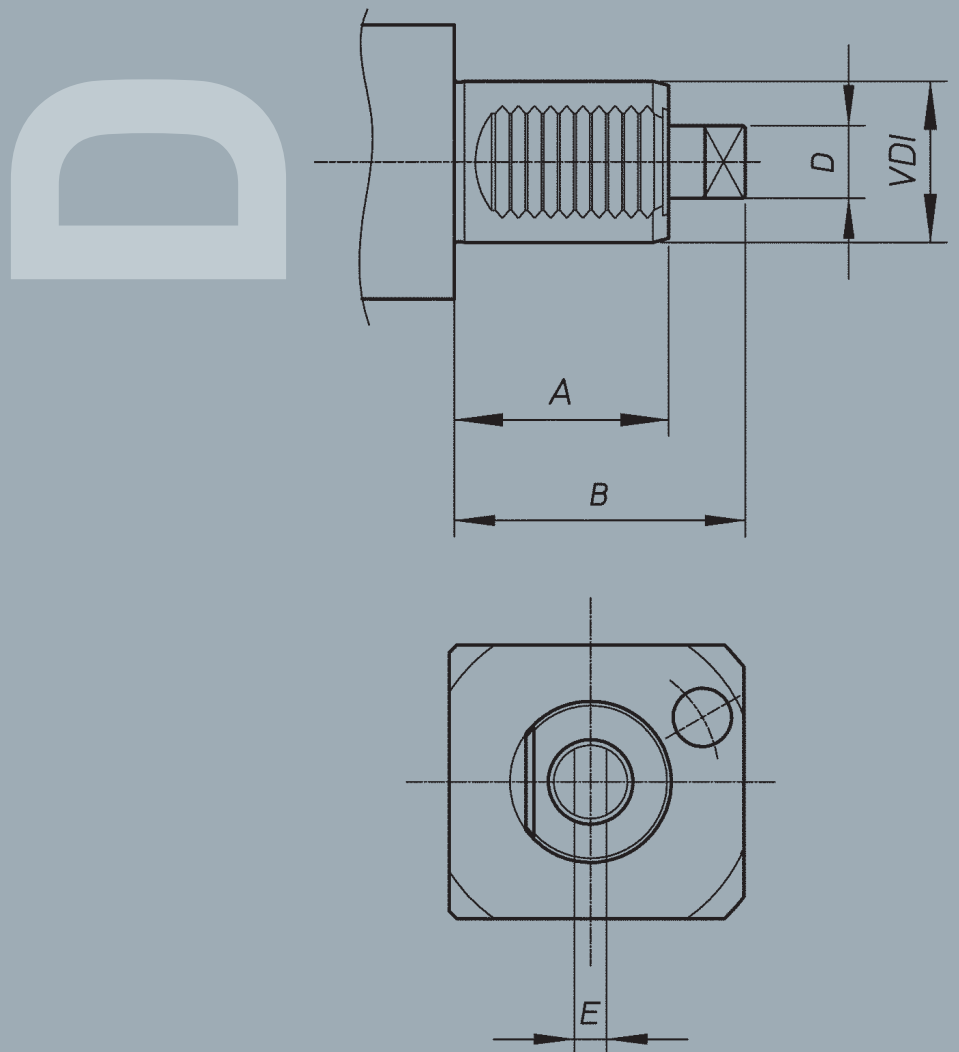
**PRESA DI MOTO**  
COUPLING  
ACCOUPLLEMENT  
KUPPLUNG



**D**  
DIN 1809



**ALGRA**  
Meccanica di precisione



**D**

DIN 1809

VDI	A	B	D	E
20	35	48	10	5
25	48	73	24	6
30	45	62	12	6
40	53	72	18	8
50	78	92	24	13
60	83	110	29	14

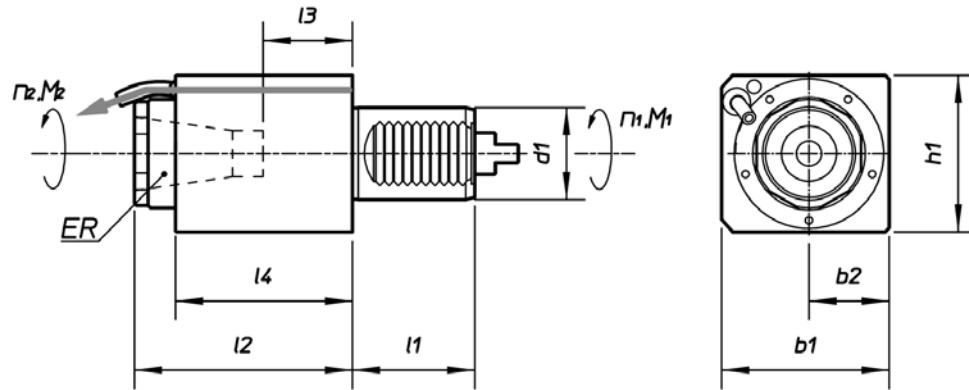
ALGRA S.p.A. - divisione accessori

Via Manzoni 41 - 24031 Almenno S. Salvatore (BG) - Tel. ++39 035.64.20.51 - Fax ++39 035.64.01.28 - [algra.accessori@algra.it](mailto:algra.accessori@algra.it) - [www.algra.it](http://www.algra.it)

1/D

Assiale	Portapinza	Refrigerazione esterna
Axial	Collet chuck	External coolant supply
Axial	Pince de serrage	Alimentation d'arrosage extérieur
Axial	Spannzangeaufnahme	Kühlschmierstoffzuführung extern

$i = n1:n2 = +1 (1:1)$

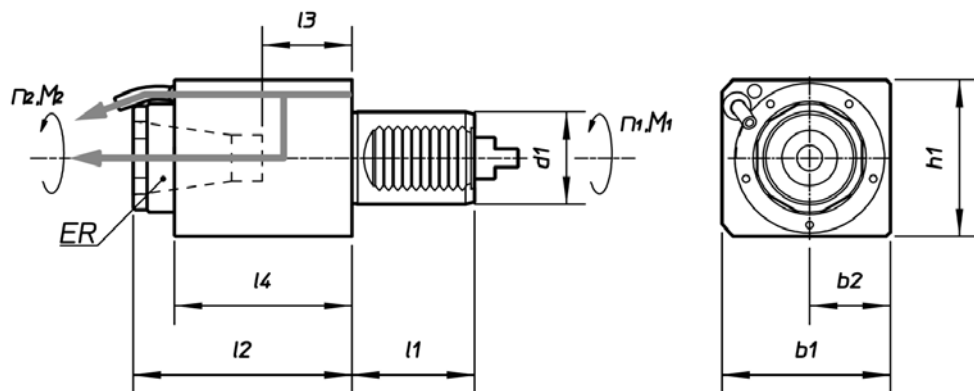


Codice - code - code - Bestell Nr.	d1	ER	l1	l2	l3	l4	b1	b2	h1	M <sub>2</sub> Nm	n <sub>2</sub> min-1	p kw
<b>RAPPS 20 221UD</b>	20	20	35	65	25	37	50	25	56	13	6000	5
<b>RAPPS 20 121UD</b>	20	20	35	90	49	61	50	25	56	13	6000	5
<b>RAPPS 25 121UDSP</b>	25	25	48	70	24	63	62	31	64	40	7000	8
<b>RAPPS 30 121UD</b>	30	25	45	94	39	88	62	31	64	32	6000	8
<b>RAPPS 30 221UD</b>	30	25	45	66	21	59	62	31	64	32	6000	8
<b>RAPPS 40 121UD</b>	40	32	53	115	54	97	73	35	70	63	5000	10
<b>RAPPS 50 121UD</b>	50	40	70	120	45	102	88	44	88	100	4000	12
<b>RAPPS 50 221UD</b>	50	40	70	88	69	25	88	44	88	100	4000	12
<b>RAPPS 60 121UD</b>	60	50	83	170	69	109	110	55	110	160	3200	15

2/D

Assiale	Portapinza	Refrigerazione interna-esterna
Axial	Collet chuck	External and internal coolant supply
Axial	Pince de serrage	Alimentation d'arrosage extérieur et intérieur
Axial	Spannzangeaufnahme	Kühlschmierstoffzuführung extern und intern

$i = n1:n2 = +1 (1:1)$



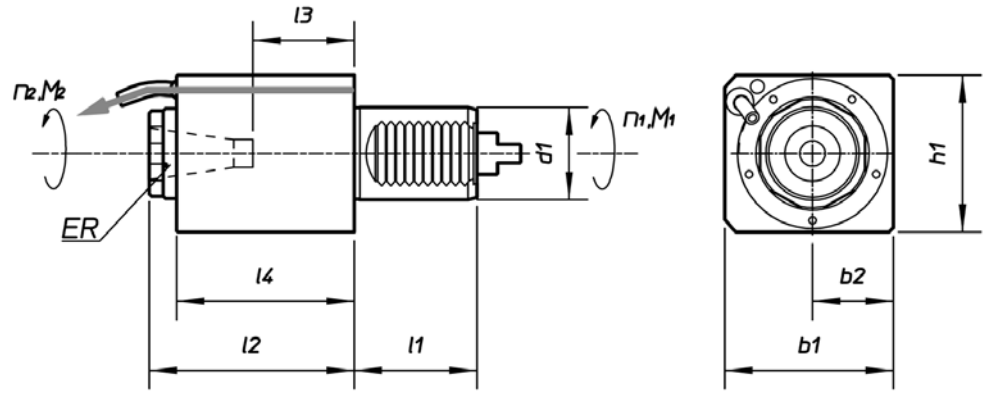
Codice - code - code - Bestell Nr.	d1	ER	l1	l2	l3	l4	b1	b2	h1	M <sub>2</sub> Nm	n <sub>2</sub> min-1	p kw
<b>RAPPS 25 131UDSP</b>	25	25	48	70	24	63	62	31	64	40	7000	8
<b>RAPPS 30 131UD</b>	30	25	45	94	39	88	62	31	64	32	6000	8
<b>RAPPS 40 131UD</b>	40	32	53	115	54	97	73	35	70	63	5000	10
<b>RAPPS 50 131UD</b>	50	40	70	120	45	102	88	44	88	100	4000	12
<b>RAPPS 60 131UD</b>	60	50	83	170	69	109	110	55	110	160	3200	15

**D**  
DIN 1809



3/D

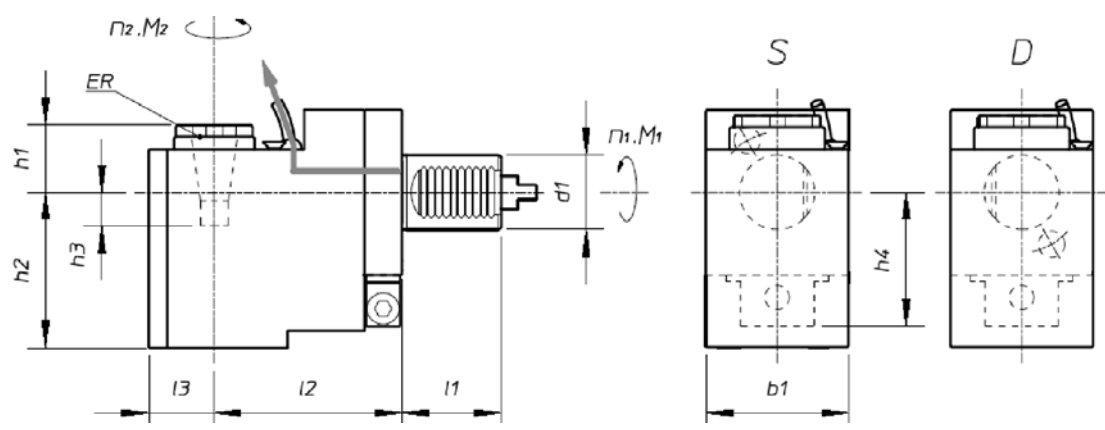
Assiale Axial Axial Axial	Portapinza Collet chuck Pince de serrage Spannzangeaufnahme	Refrigerazione esterna External coolant supply Alimentation d'arrosage extérieur Kühlschmierstoffzuführung extern	<b><math>i = n_1:n_2 = +0,25 (1:4)</math></b>
------------------------------------	--	--	---



Codice - code - code - Bestell Nr.	d1	ER	l1	l2	l3	l4	b1	b2	h1	M <sub>2</sub> Nm	n <sub>2</sub> min-1	p kw		
<b>RAPPS 20 122UD</b>	<b>20</b>	<b>16</b>	35	100	68	85	50	25	56	3	24000	3		
<b>RAPPS 30 122UD</b>	<b>30</b>	<b>16</b>	45	100	58	88	62	31	64	8	20000	4		

4/D

Arretrato Rear offset Décallee en arrière Zurückgesetzt	Portapinza Collet chuck Pince de serrage Spannzangeaufnahme	Refrigerazione esterna External coolant supply Alimentation d'arrosage extérieur Kühlschmierstoffzuführung extern	<b><math>i = n_1:n_2 = +0,25 (1:4)</math></b>
--	--	--	---

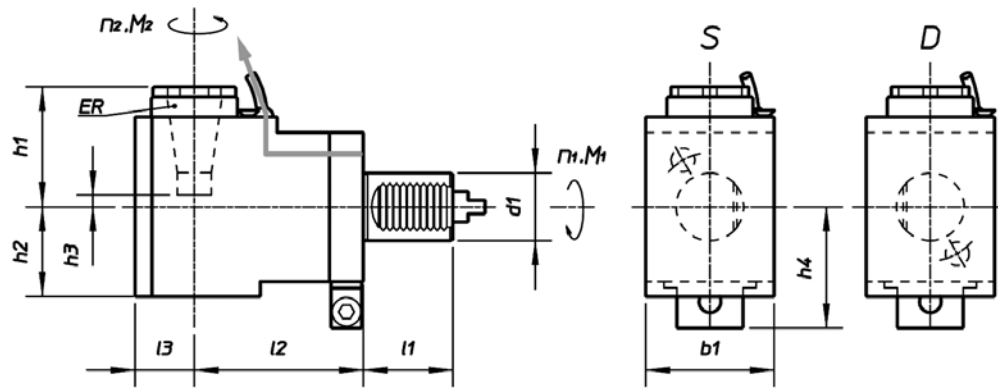


Codice - code - code - Bestell Nr.	d1	ER	l1	l2	l3	b1	h1	h2	h3	h4	M <sub>2</sub> Nm	n <sub>2</sub> min-1	p kw		
S	D														
<b>RRPPA 20 122SD</b>	<b>RRPPA 20 122DD</b>	<b>20</b>	<b>16</b>	35	<b>75</b>	26	50	28	48	4	56	3	24000	3	

**D**  
DIN 1809

5/D

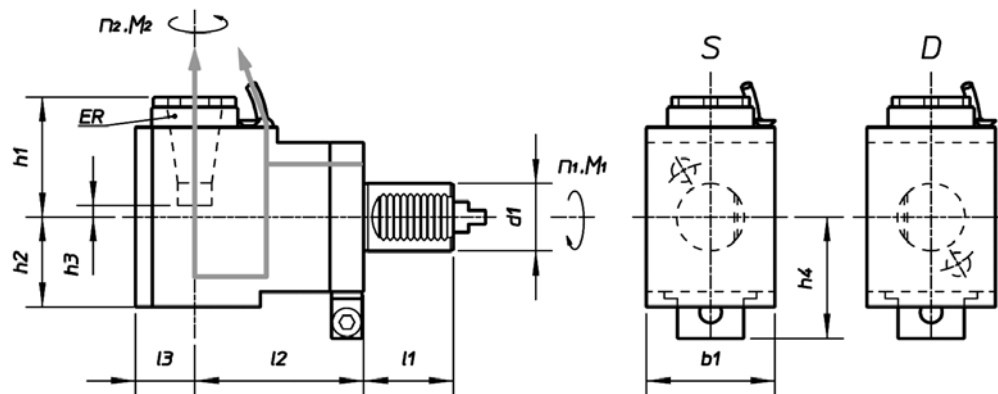
Radiale	Portapinza	Refrigerazione esterna
Radial	Collet chuck	External coolant supply
Radial	Pince de serrage	Alimentation d'arrosage extérieur
Radial	Spannzangeaufnahme	Kühlschmierstoffzuführung extern

 $i = n_1:n_2 = -1 (1:1)$ 


Codice - code - code - Bestell Nr.		d1	ER	l1	l2	l3	b1	h1	h2	h3	h4	M <sub>2</sub>	n <sub>2</sub>	p
S	D											Nm	min-1	kw
<b>RRPPS 20 121SD</b>	<b>RRPPS 20 121DD</b>	<b>20</b>	<b>20</b>	35	<b>60</b>	25	50	60	38	19	57	13	6000	5
<b>RRPPS 25 121UDSP</b>		<b>25</b>	<b>25</b>	48	<b>75</b>	31	64	63	48	1	54	40	7000	8
<b>RRPPS 30 121SD</b>	<b>RRPPS 30 121DD</b>	<b>30</b>	<b>25</b>	45	<b>55</b>	31	64	56	48	3	52	32	6000	8
<b>RRPPS 30 321SD</b>	<b>RRPPS 30 321DD</b>	<b>30</b>	<b>25</b>	45	<b>85</b>	31	64	56	48	3	52	32	6000	8
<b>RRPPS 30 421SD</b>	<b>RRPPS 30 421DD</b>	<b>30</b>	<b>25</b>	45	<b>100</b>	31	64	56	48	3	52	32	6000	8
<b>RRPPS 40 121SD</b>	<b>RRPPS 40 121DD</b>	<b>40</b>	<b>32</b>	53	<b>100</b>	35	76	71	55	11	71	63	5000	10
<b>RRPPS 50 121SD</b>	<b>RRPPS 50 121DD</b>	<b>50</b>	<b>40</b>	70	<b>110</b>	44	88	92	73	16	79	100	4000	12
<b>RRPPS 60 121SD</b>	<b>RRPPS 60 121DD</b>	<b>60</b>	<b>50</b>	83	<b>130</b>	52	110	149	83	46	100	160	3200	15

6/D

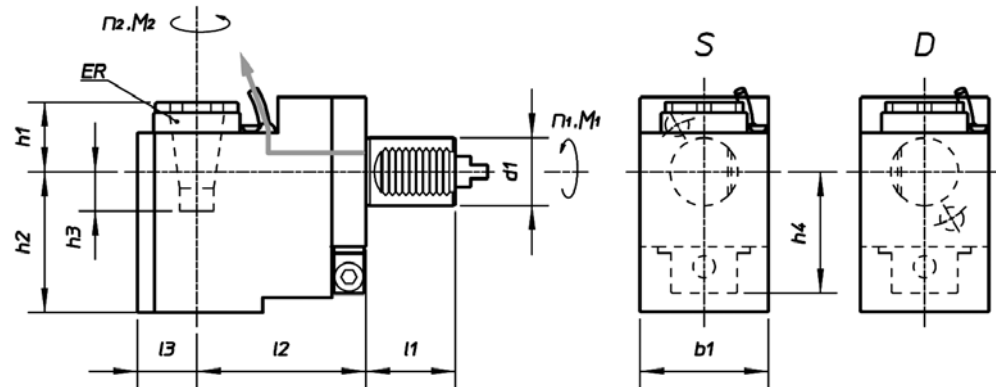
Radiale	Portapinza	Refrigerazione interna-esterna
Radial	Collet chuck	External and internal coolant supply
Radial	Pince de serrage	Alimentation d'arrosage extérieur et intérieur
Radial	Spannzangeaufnahme	Kühlschmierstoffzuführung extern und intern

 $i = n_1:n_2 = -1 (1:1)$ 


Codice - code - code - Bestell Nr.		d1	ER	l1	l2	l3	b1	h1	h2	h3	h4	M <sub>2</sub>	n <sub>2</sub>	p
S	D											Nm	min-1	kw
<b>RRPPS 25 131UDSP</b>		<b>25</b>	<b>25</b>	48	<b>75</b>	31	64	63	55	1	54	40	7000	8
<b>RRPPS 30 131SD</b>	<b>RRPPS 30 131DD</b>	<b>30</b>	<b>25</b>	45	<b>55</b>	31	64	56	60	3	52	32	6000	8
<b>RRPPS 30 331SD</b>	<b>RRPPS 30 331SD</b>	<b>30</b>	<b>25</b>	45	<b>85</b>	31	64	56	60	3	52	32	6000	8
<b>RRPPS 30 431SD</b>	<b>RRPPS 30 431SD</b>	<b>30</b>	<b>25</b>	45	<b>100</b>	31	64	56	60	3	52	32	6000	8
<b>RRPPS 40 131SD</b>	<b>RRPPS 40 131DD</b>	<b>40</b>	<b>32</b>	53	<b>100</b>	35	76	71	62	11	71	63	5000	10
<b>RRPPS 50 131SD</b>	<b>RRPPS 50 131DD</b>	<b>50</b>	<b>40</b>	70	<b>110</b>	44	88	92	73	16	79	100	4000	12
<b>RRPPS 60 131SD</b>	<b>RRPPS 60 131DD</b>	<b>60</b>	<b>50</b>	83	<b>130</b>	52	110	149	83	46	100	160	3200	15

7/D

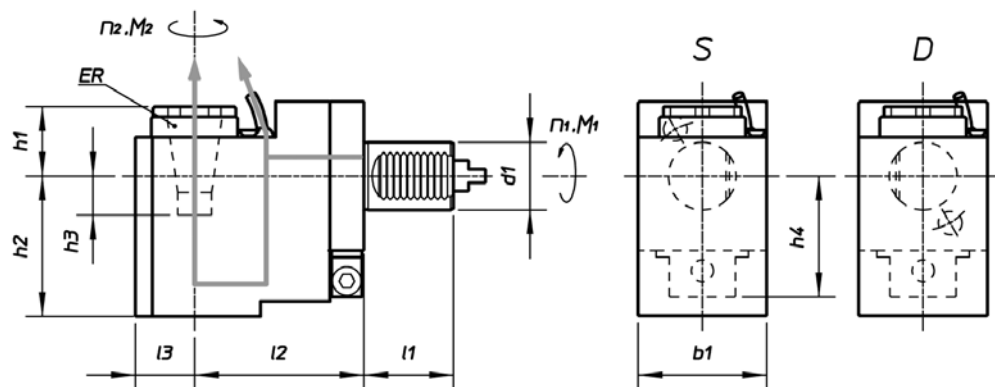
Arretrato	Portapinza	Refrigerazione esterna
Rear offset	Collet chuck	External coolant supply
Décalée en arrière	Pince de serrage	Alimentation d'arrosage extérieur
Zurückgesetzt	Spannzangeaufnahme	Kühlschmierstoffzuführung extern

 $i = n1:n2 = +1 (1:1)$ 


Codice - code - code - Bestell Nr.		d1	ER	l1	l2	l3	b1	h1	h2	h3	h4	M <sub>2</sub> Nm	n <sub>2</sub> min-1	p kw
S	D													
RRPPA 20 321SD	RRPPA 20 321DD	20	16	35	75	26	50	28	48	4	56	13	6000	5
RRPPA 30 321SD	RRPPA 30 321DD	30	25	45	85	31	64	14,5	90	45	52	32	5000	8
RRPPA 40 121SD	RRPPA 40 121DD	40	32	53	100	35	76	20	106	40	72,5	63	4000	10
RRPPA 50 121SD	RRPPA 50 121DD	50	40	70	110	44	88	31	136	46	79	100	4000	12

8/D

Arretrato	Portapinza	Refrigerazione interna-esterna
Rear offset	Collet chuck	External and internal coolant supply
Décalée en arrière	Pince de serrage	Alimentation d'arrosage extérieur et intérieur
Zurückgesetzt	Spannzangeaufnahme	Kühlschmierstoffzuführung extern und intern

 $i = n1:n2 = +1 (1:1)$ 


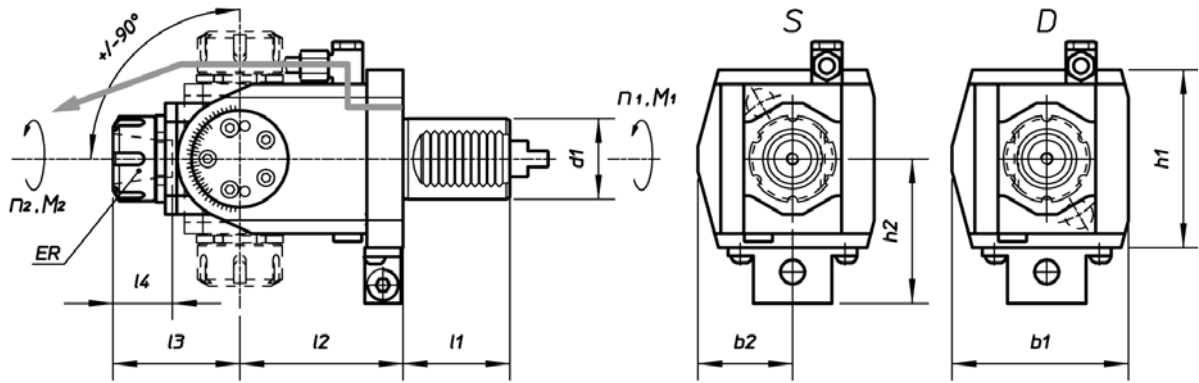
Codice - code - code - Bestell Nr.		d1	ER	l1	l2	l3	b1	h1	h2	h3	h4	M <sub>2</sub> Nm	n <sub>2</sub> min-1	p kw
S	D													
RRPPA 30 331SD	RRPPA 30 331DD	30	25	45	85	31	64	24	105,5	45,5	52	32	5000	8
RRPPA 40 131SD	RRPPA 40 131DD	40	32	53	100	35	76	30	124	40	72,5	63	4000	10
RRPPA 50 131SD	RRPPA 50 131DD	50	40	70	110	44	88	44	136	46	79	100	4000	12

**D**

DIN 1809

11/D

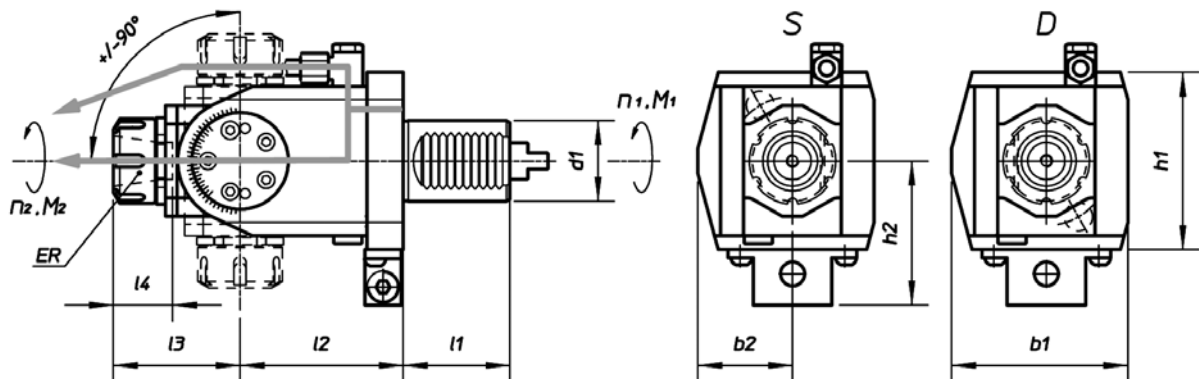
<b>Orientabile</b> Angle adjustable Angle réglable winkeleinstellbar	<b>Portapinza</b> Collet chuck Pince de serrage Spannzangeaufnahme	<b>Refrigerazione esterna</b> External coolant supply Alimentation d'arrosage extérieur Kühlschmierstoffzuführung extern
---	---	---

 $i = n1:n2 = +1 (1:1)$ 


Codice - code - code - Bestell Nr.		d1	ER	l1	l2	l3	l4	b1	b2	h1	h2	M <sub>2</sub> Nm	n <sub>2</sub> min-1	p kw
S	D													
<b>ROPPS 30 221SD</b>	<b>ROPPS 30 221DD</b>	<b>30</b>	<b>20</b>	45	<b>64</b>	52	37	70	37	64	54	15	6000	3
<b>ROPPS 30 321SD</b>	<b>ROPPS 30 321DD</b>	<b>30</b>	<b>20</b>	45	<b>97</b>	52	37	70	37	64	54	15	6000	3
<b>ROPPS 40 121SD</b>	<b>ROPPS 40 121DD</b>	<b>40</b>	<b>25</b>	53	<b>81</b>	63	42	87	47	88	71	25	5000	4

11/B

<b>Orientabile</b> Angle adjustable Angle réglable winkeleinstellbar	<b>Portapinza</b> Collet chuck Pince de serrage Spannzangeaufnahme	<b>Refrigerazione interna-esterna</b> External and internal coolant supply Alimentation d'arrosage extérieur et intérieur Kühlschmierstoffzuführung extern und intern
---	---	--

 $i = n1:n2 = +1 (1:1)$ 


Codice - code - code - Bestell Nr.		d1	ER	l1	l2	l3	b1	h1	h2	h3	h4	M <sub>2</sub> Nm	n <sub>2</sub> min-1	p kw
S	D													
<b>ROPPS 30 231SD</b>	<b>ROPPS 30 231DD</b>	<b>30</b>	<b>20</b>	45	<b>64</b>	52	37	70	37	64	54	15	6000	3
<b>ROPPS 30 331SD</b>	<b>ROPPS 30 331DD</b>	<b>30</b>	<b>20</b>	45	<b>97</b>	52	37	70	37	64	54	15	6000	3
<b>ROPPS 40 131SD</b>	<b>ROPPS 40 131DD</b>	<b>40</b>	<b>25</b>	53	<b>81</b>	63	42	87	47	88	71	25	5000	4

**D**  
 DIN 1809