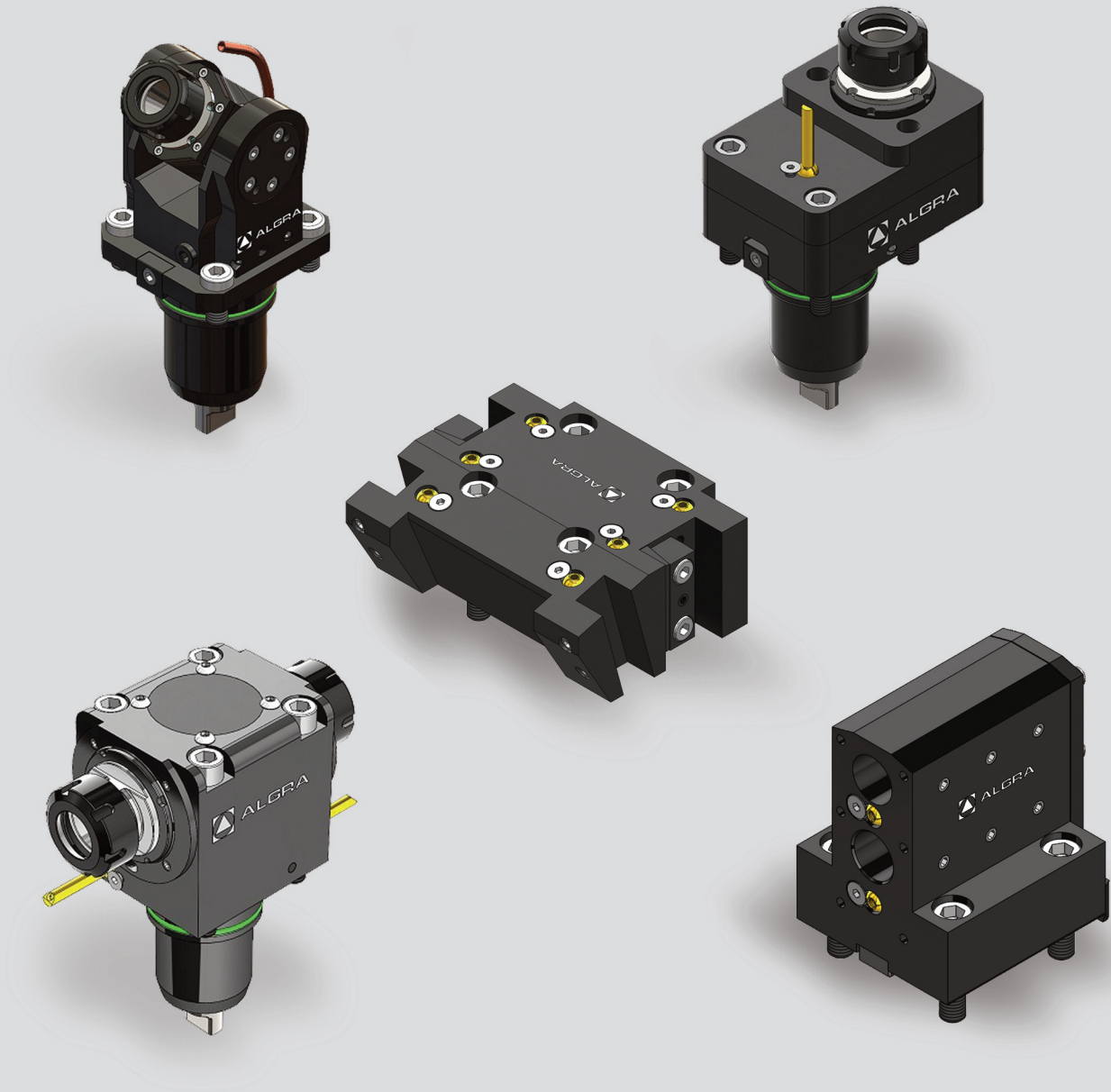


- SC-300
- SC-300 II
- Super NTX
- TMC 200, 300 M
- TW-20 (12 Station turret)
- TW-30 (16 Station turret)
- WT-300

Toolholder Program

# N65

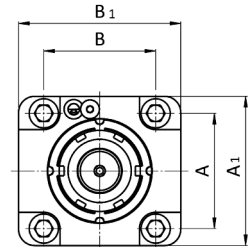
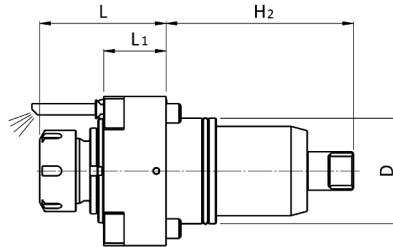





SC-300  
 SC-300 II  
 Super NTX  
 TMC 200, 300 M  
 TW-20 (12 Station turret)  
 TW-30 (16 Station turret)  
 WT-300

N65	Version	Tools Clamping	Center Height	Max. speed	Ratio	External	Internal	Page
	0°	ER32 - DIN6499		6000rpm	i=1:1	RAPPS 32 121UN65	RAPPS 32 131UN65	4
		ER40 - DIN6499		6000rpm	i=1:1	RAPPS 40 121UN65	RAPPS 40 131UN65	
	0°	ER32 - DIN6499		6000rpm	i=1:1	RAPPD 32 121UN65/50	RAPPD 32 131UN65/50	5
	0°	Ø22mm - DIN6358		6000rpm	i=1:1	RAPFS 22 121UN65		6
	90°	ER32 - DIN6499	65mm	6000rpm	i=1:1	RRPPS 32 121UN65	RRPPS 32 131UN65	7
		ER40 - DIN6499	65mm	6000rpm	i=1:1	RRPPS 40 121UN65	RRPPS 40 131UN65	
		ER32 - DIN6499	80mm	6000rpm	i=1:1	RRPPS 32 321UN65	RRPPS 32 331UN65	
	90° Double	ER32 - DIN6499	65mm	6000rpm	i=1:1	RRPPT 32 121UN65		8
		ER40 - DIN6499	65mm	6000rpm	i=1:1	RRPPT 40 121UN65		
	±90°	ER25 - DIN6499	80mm	6000rpm	i=1:1	ROPPS 25 121UN65	ROPPS 25 131UN65	9

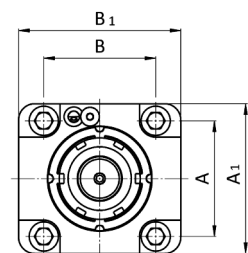
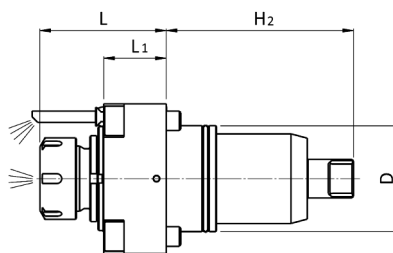
SC-300  
 SC-300 II  
 Super NTX  
 TMC 200, 300 M  
 TW-20 (12 Station turret)  
 TW-30 (16 Station turret)  
 WT-300






N65	Version	Tools Clamping	Center Height	Coolant	ALGRA Part. No.	Page
	O.D. cutting holder	□ 25 mm	H:70 mm	External	E10/US 25 N65X70	10
		□ 1"	H:70 mm	External	E10/US 1" N65X70	
	O.D. double holder	□ 25 mm	H:70 mm	External	E10/UD 25 X65X70	10
		□ 1"	H:70 mm	External	E10/UD 1" N65X70	
	Face and I.D. cutting holder	□ 25 mm	H:85mm	External	E10/UA 25 N65X85	11
		□ 1"	H:85 mm	External	E10/UA 1" N65X85	
	Blade Holder	∅ 32 mm	H:65mm	External	E10/TT 32 N65X65	11
	Index cutting holder	□ 20 mm	H:65mm	External	E12/IQ 20 N65X65	12
		□ 0.75 mm	H:65mm	External	E12/IQ0.75"N65X65	
	Boring Bar holder	∅ 40 mm	H:90 mm	Internal/External	E10/B 40 N65X90	12
		∅ 50 mm	H:90 mm	Internal/External	E10/B 50 N65X90	
		∅ 1.5"	H:90 mm	Internal/External	E10/B 1.5" N65X90	
		∅ 2"	H:90 mm	Internal/External	E10/B 2"N65X90	
	Boring Bar holder	∅ 25 mm	H:57,5/100	Internal/External	E10/BD 25 N65X57,5/100	13
		∅ 1"	H:57,5/100	Internal/External	E10/BD 1" N65X57,5/100	

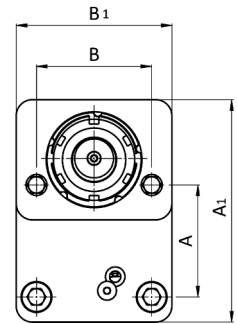
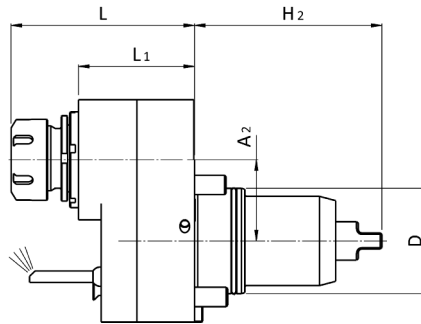



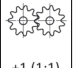

1/N65			Codice	D	ER	H	H1	H2	H3	L	L1	L2	A	B	A1	B1	A2	B2	M <sub>2</sub>	n <sub>2</sub>	P
			code - code - Bestell Nr.							(min-max)									Nm	min-1	kW
0°			RAPPS 32 121UN65	65	32			115,5		74,2÷77,9			71	69	92	100			63	6000	10
			RAPPS 40 121UN65	65	40			116,5		92,7				71	69	102	94			70	8000
																					

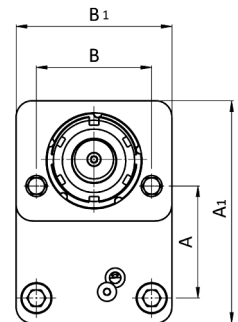
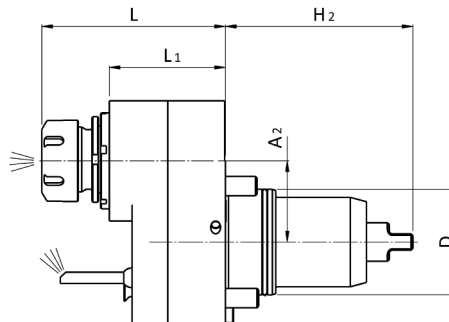
4








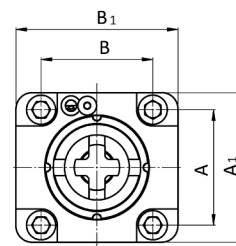
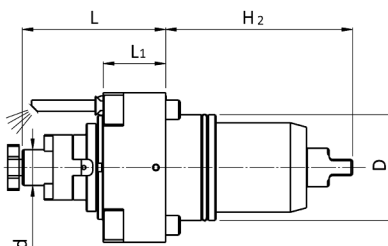
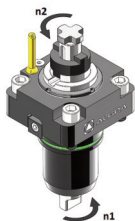
2/N65			Codice	D	ER	H	H1	H2	H3	L	L1	L2	A	B	A1	B1	A2	B2	M <sub>2</sub>	n <sub>2</sub>	P
			code - code - Bestell Nr.							(min-max)									Nm	min-1	kW
0°			RAPPS 32 131UN65	65	32			115,5		74,2÷77,9			71	69	92	100			63	6000	10
			RAPPS 40 131UN65	65	40			116,5		92,7				71	69	102	94			70	8000
																					
																					
																					

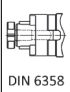




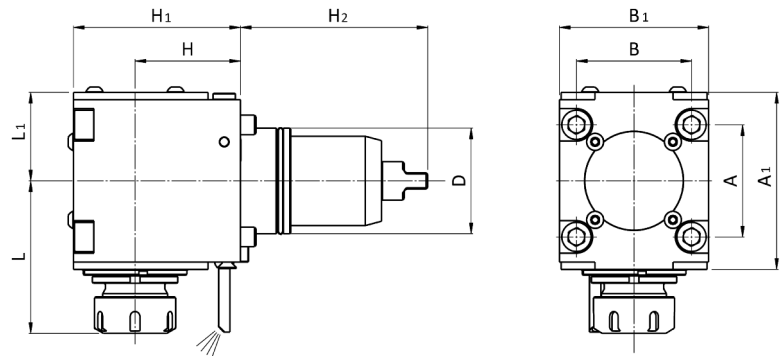
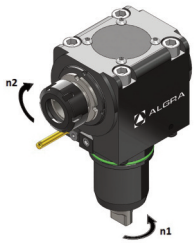
3/N65			Codice	D	ER	H	H1	H2	H3	L	L1	L2	A	B	A1	B1	A2	B2	M <sub>2</sub>	n <sub>2</sub>	P
			code - code - Bestell Nr.							(min-max)									Nm	min-1	kW/
			RAPPD 32 121UN65/50	65	32			115,5		113,1	71,5		69	71	137	96	50			63	6000
0°																					
	DIN 6499	+1 (1:1)																			
																					
EXTERNAL																					




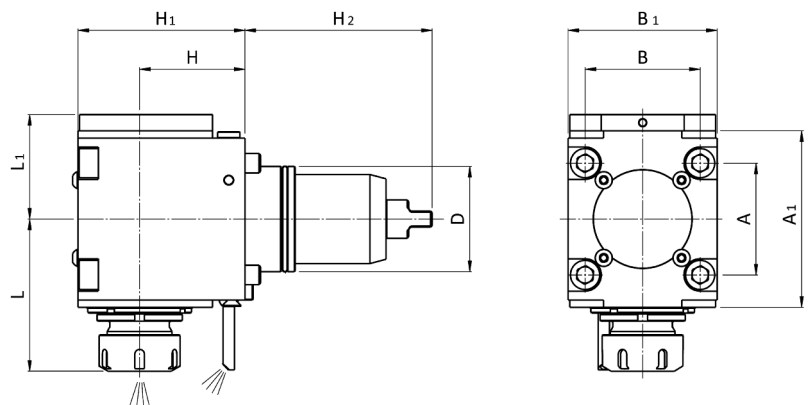
4/N65			Codice	D	ER	H	H1	H2	H3	L	L1	L2	A	B	A1	B1	A2	B2	M <sub>2</sub>	n <sub>2</sub>	P
			code - code - Bestell Nr.							(min-max)									Nm	min-1	kW
			RAPPD 32 131UN65/50	65	32			115,5		113,1	71,5		69	71	137	96	50			63	6000
0°																					
	DIN 6499	+1 (1:1)																			
																					
INT./EXT.	100 bar	Filtration 30µm																			


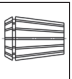



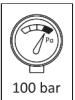
5/N65			Codice	D	ER	d	H1	H2	H3	L	L1	L2	A	B	A1	B1	A2	B2	M <sub>2</sub>	n <sub>2</sub>	P
			code - code - Bestell Nr.							(min-max)									Nm	min-1	kW
0°			RAPFS 22 121UN65	65		22		115,5		88,5	38,5		71	69	92	100			60	6000	10
 EXTERNAL																					

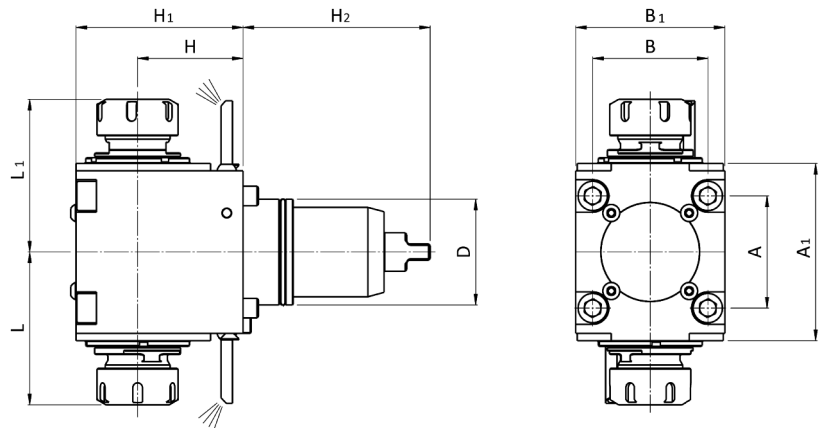
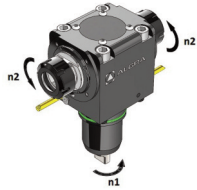





6/N65			Codice	D	ER	H	H1	H2	H3	L	L1	L2	A	B	A1	B1	A2	B2	M <sub>2</sub>	n <sub>2</sub>	P		
			code - code - Bestell Nr.							(min-max)									Nm	min-1	kW		
 90°	 DIN 6499	 -1 (1:1)	RRPPS 32 121UN65	65	32	65	103	115,5		90,2-93,9	54,5		69	71	100	92			63	6000	10		
			RRPPS 40 121UN65	65	40	65	107	116,5		100,2	69,5				69	71	100	92			70	6000	11
			RRPPS 32 321UN65	65	32	80	118	115,5		90,2-93,9	54,5				69	71	100	92			63	6000	10



7/N65			Codice	D	ER	H	H1	H2	H3	L	L1	L2	A	B	A1	B1	A2	B2	M <sub>2</sub>	n <sub>2</sub>	P		
			code - code - Bestell Nr.							(min-max)										Nm	min-1	kW	
 90°	 DIN 6499	 -1 (1:1)	RRPPS 32 131UN65	65	32	65	103	115,5		90,2-93,9	64,5		69	71	100	92			63	6000	10		
			RRPPS 40 131UN65	65	40	65	107	116,5		100,2	69,5				69	71	100	92			70	6000	11
			RRPPS 32 331UN65	65	32	80	118	115,5		90,2-93,9	64,5				69	71	100	92			63	6000	10

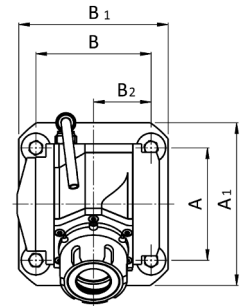
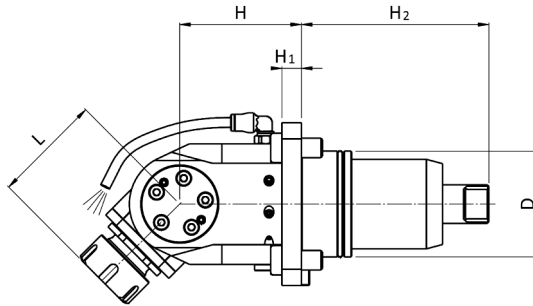


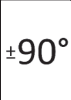

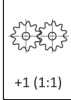



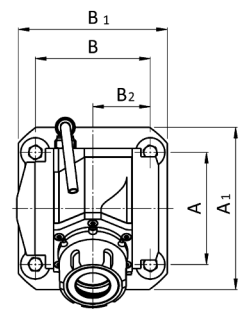
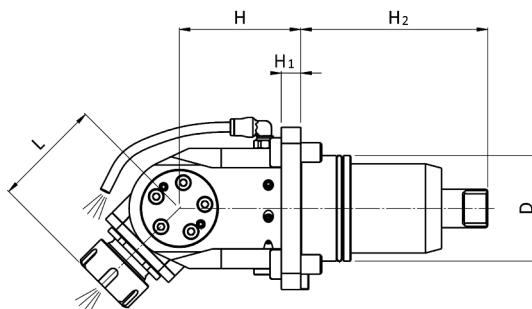
8/N65		Codice code - code - Bestell Nr.	D	ER	H	H1	H2	H3	L (min-max)	L1	A	B	A1	B1	A2	B2	M <sub>2</sub> Nm	n <sub>2</sub> min-1	P kW
 90°	 DIN 6499	 ±1 (1:1)	RRPPT 32 121UN65	65	32	65	103	116	90,2-93,9	90,2-93,9	69	71	100	92			63	6000	10
			RRPPT 40 121UN65	65	40	65	107	116,5	100,2	100,2	69	71	100	92				63	6000



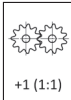





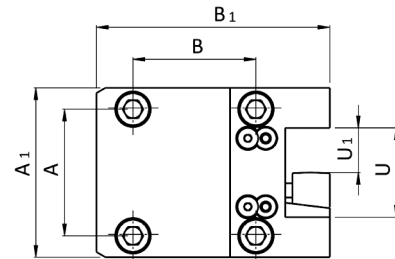
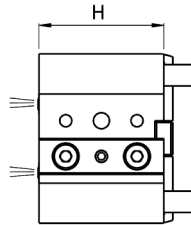


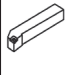



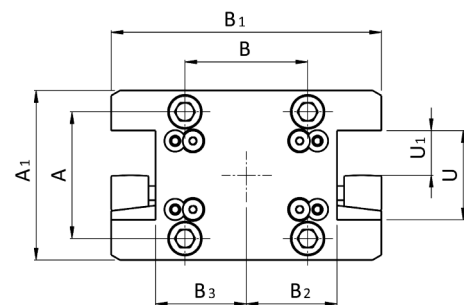
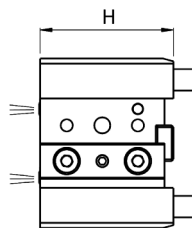
9/N65			Codice	D	ER	H	H1	H2	H3	L	L1	L2	A	B	A1	B1	A2	B2	M <sub>2</sub>	n <sub>2</sub>	P	
			code - code - Bestell Nr.							(min-max)									Nm	min-1	kW	
  			ROPPS 25 121UN65	65	25	75	12	115,5		67,2			69	71	100	92		35,5	25	6000	4	
																						

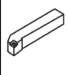
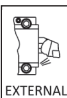


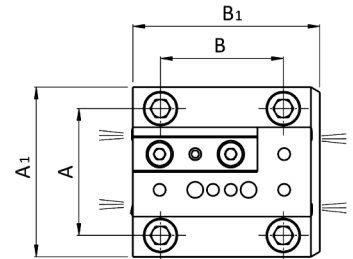
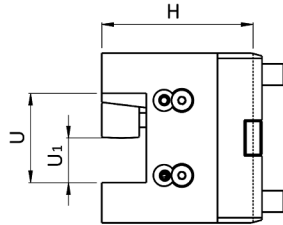
10/N65			Codice	D	ER	H	H1	H2	H3	L	L1	L2	A	B	A1	B1	A2	B2	M <sub>2</sub>	n <sub>2</sub>	P		
			code - code - Bestell Nr.							(min-max)										Nm	min-1	kW	
  			ROPPS 25 131UN65	65	25	75	12	115,5		67,2			69	71	100	92		35,5	25	6000	4		
  																							

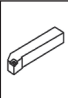



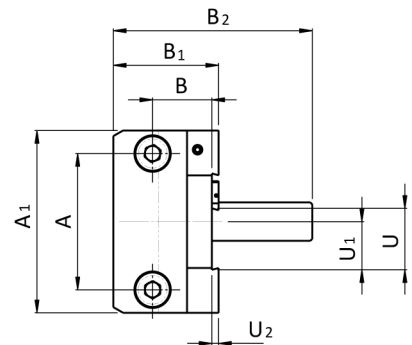
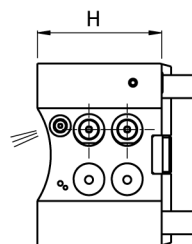
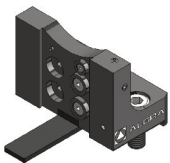
101/N65		Codice code - code - Bestell Nr.	D	U	U1	U2	H	H1	H2	H3	A	B	A1	B1	A2	B2	B3
  EXTERNAL		<b>E10/US 25 N65X70</b>		50	25		70				71	69	95	131			
		<b>E10/US 1" N65X70</b>		2"	1"		70				71	69	95	131			

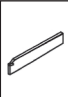



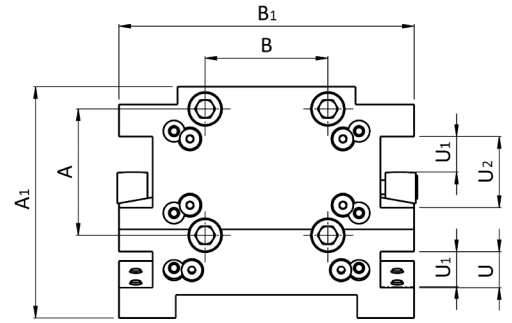
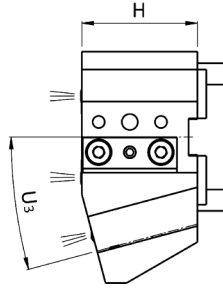
102/N65		Codice code - code - Bestell Nr.	D	U	U1	U2	H	H1	H2	H3	A	B	A1	B1	A2	B2	B3
  EXTERNAL		<b>E10/UD 25 N65X70</b>		50	25		70				71	69	95	152		51	51
		<b>E10/UD 1" N65X70</b>		2"	1"		70				71	69	95	152		51	51

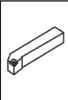
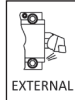


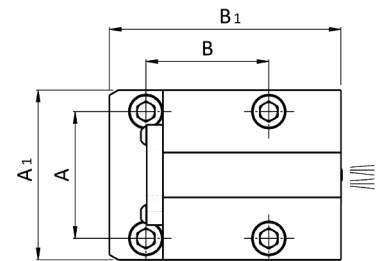
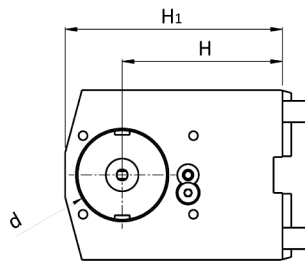
103/N65		Codice code - code - Bestell Nr.	D	U	U1	U2	H	H1	H2	H3	A	B	A1	B1	A2	B2	B3
  EXTERNAL		E10/UA 25 N65X85		50	25		85				71	69	95	105			
		E10/UA 1" N65X85		2"	1"		85				71	69	95	105			

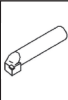
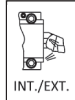


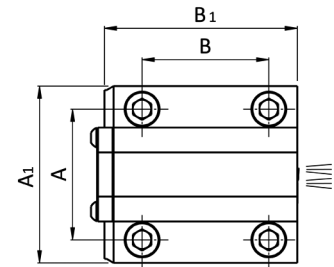
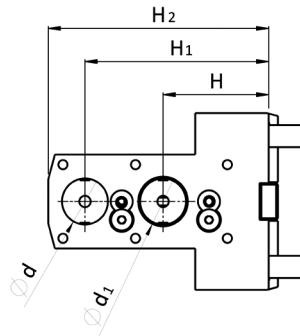
104/N65		Codice code - code - Bestell Nr.	D	U	U1	U2	H	H1	H2	H3	A	B	A1	B1	A2	B2	B3
  EXTERNAL		E10/TT 32N65X65		32	25	2,36	65				71	31	95	55		104	





105/N65		Codice code - code - Bestell Nr.	D	U	U1	U2	U3	H	H1	H2	H3	A	B	A1	B1	A2	B2	B3
  EXTERNAL	E12/IQ20N65X65			21	20	40	15°	65				71	69	130	166			
	E12/IQ0.75"N65X65			1.5"	0.75"	40	15°	65				71	69	130	166			



106/N65		Codice code - code - Bestell Nr.	D	U	U1	U2	d	H	H1	H2	H3	A	B	A1	B1	A2	B2	B3
  INT./EXT.	E10/B 40 N65X90					40	90	122				71	69	95	130			
	E10/B 50 N65X90					50	90	122				71	69	95	130			
	E10/B 1.5"N65X90					1.5"	90	122				71	69	95	130			
	E10/B 2" N65X90					2"	90	122				71	69	95	130			



107/N65	Codice code - code - Bestell Nr.	D	d	d1	d2	H	H1	H2	H3	A	B	A1	B1	A2	B2	B3
  INT./EXT.	E10/BD25N65X57,5/100			25	25	57,5	100	120		71	69	96	105			
	E10/BD1"N65X57,5/100			1"	1"	57,5	100	120		71	69	96	105			



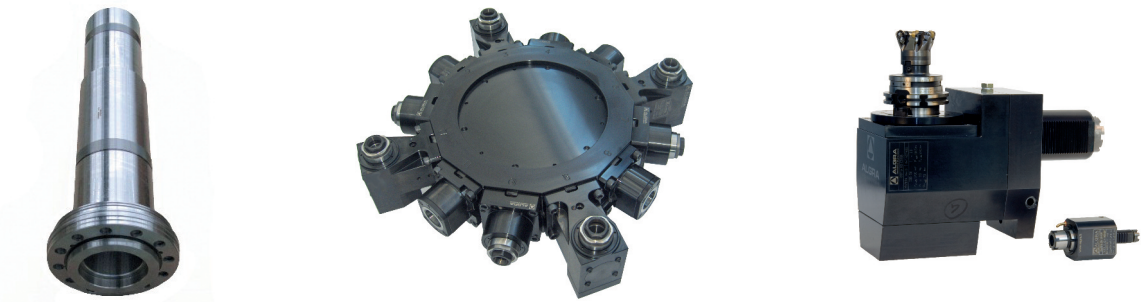
**La produzione:  
il lavoro**Production:  
work

La produzione viene sviluppata nella moderna struttura a temperatura controllata di Almenno San Salvatore, mentre negli stabilimenti di Brembilla (I-Bergamo) vengono effettuate le lavorazioni di montaggio ed assemblaggio di gruppi completi. La superficie coperta delle strutture è di mq. 15.000, dei quali mq. 1.000 sono adibiti agli uffici amministrativi, commerciali e tecnici. L'attività produttiva si svolge con l'utilizzo di impianti e macchinari CNC costantemente aggiornati alle nuove tecnologie ed in grado di sviluppare le seguenti lavorazioni:

- Asportazione di truciolo
- Elettroerosione
- Tornitura orizzontale e verticale
- Fresatura universale 5 assi
- Fresatura/tornitura
- Lappatura per fori e piani
- Rettifica in tondo interno ed esterno
- Rettifica in tangenziale oltre al montaggio di gruppi e sottogruppi completi.

*The production is developed in the modern, temperature controlled facility in Almenno San Salvatore, with Brembilla factories there are the assembly operations and the assembly of complete groups. The facilities covered area is of 15,000 sqm., 1,000 sqm. of which are used for the administrative commercial and technical offices. The production cycle takes place with the use of CNC fixtures and equipment constantly updated with new technologies and able to develop the following machining:*

- Chip machining
- Electroerosion
- Horizontal and vertical turning
- 5-axis universal milling
- Milling/turning
- Lapping for holes and plane surfaces
- Cylindrical internal and external grinding
- Tangential grinding in addition to the assembly of complete groups and subassemblies.

**Certificazioni:  
uno standard  
qualitativo**Certification:  
a quality  
standard

La tecnologia avanzata svolge un ruolo chiave nell'obiettivo di incrementare il proprio valore, quello dei propri prodotti, dei servizi e della capacità del personale, operando nel rispetto delle norme UNI EN ISO 9001:2008 e ISO 14001:2004. L'alto livello di sensibilità verso il rispetto delle regole di sicurezza e dell'ambiente è presente ed immediatamente percepito in tutte le strutture aziendali.

*Advanced technology plays a key role aiming to increase its value and the products, services and staff capacity value, operating in compliance with UNI EN ISO 9001:2008 and ISO 14001:2004.*

*The high level of sensitivity towards the observance of safety rules and the environment is present and perceived immediately in all facilities.*



UNI EN ISO 9001:2008 - Cert. n° 0141



UNI EN ISO 14001:2004 - Cert. n° 0270A

## Our partners:

### AUSTRALIA

**MODERN TOOLS (VIC.) PTY LTD**  
2/2 Newcastle Rd  
Bayswater, Australia, VIC 3153  
Phone: +61 03 9761 2929

---

### BENELUX

**BUCCI INDUSTRIES BENELUX**  
Alée Verte 12, B-5150 Floreffe (Belgium)  
Phone: +32 496 10 10 90

---

### BRASIL

**BUCCI INDUSTRIES BRASIL**  
R. Dr. Augusto De Miranda, 910  
Vila Pompeia, São Paulo,  
Brasile, SP, 05026-000  
Phone: +55 19 3515 7220

---

### BULGARIA

**RAIS LTD**  
Пловдив, Бул. Освобождение 3, Ет. 3,  
Plovdiv, Bulgaria, 4019  
Phone: +359 34444255

---

### CHINA

**SHANGHAI LUOTUO  
AUTOMATION TECHNOLOGY CO**  
NORTH GUYANG ROAD,  
SONGJIANG DISTRICT  
SHANGHAI, Cina, 201620  
Phone: +86 2164120150

---

### CZECH REPUBLIC

**MACH TRADE S.R.O.**  
Radiová 1431/2a  
Praha, Repubblica Ceca, 102 00  
Phone: +420 603293270

---

### FRANCE

**BUCCI INDUSTRIES FRANCE SARL**  
145 Rue Louis Armand  
Cluses, Francia, 74300  
Phone: +32 81450282

---

### GERMANY

**ITAL TECH SERVICE GMBH**  
Am Langenberg 13  
Ingelheim Am Rhein, Germania, 55218  
Phone: +49 1752955353

---

### BUCCI INDUSTRIES DEUTSCHLAND

Stammheimer Str, 10  
D-70806 Kornwestheim - Germany  
Phone: +49 7154 8370 700

---

### INDIA

**DWIJ CONSULTANTS**  
25, Payal Park Part-1, Satellite Road  
Gujarat , India, 380015  
Phone: +91 7926760747

---

### JAPAN

**BUCCI INDUSTRIES JAPAN-IGM NIPPON**  
Kamoi, 6-10-1 Midori-Ku, 226-0003  
Yokohama-Shi Kanagawa  
Phone: +81 45 931 5096

---

### NEW ZELAND

**SCOTT MACHINERY LIMITED**  
51 Gilberthorpes Rd, Hei Hei  
Christchurch, Nuova Zelanda, 8441  
Phone: +64 3-349 2266

---

### POLAND

**Narzędzia Skrawające TOOLS Sp. z o.o.**  
Ul. Władysława Grabskiego 25,  
Siechnice, Polonia, 55-011  
Phone: +48 713435858

---

### RUSSIA

**SOLVER ENGINEERING LLC**  
43 STANKEVICHIA STR  
VORONEZH, Russia, 394006  
Phone: +7 4732777222

---

### SPAIN

**DAISA TECHNOLOGIC, S.L.**  
Urdaneta Bidea, 13  
Zarautz, Gipuzkoa, Spagna, 20800  
Phone: +34 943133739

---

### SWEDEN

**LICHRON AB**  
Norregårdsvägen 17  
Skövde, Svezia, 541 34  
Phone: +46 500445050

---

### SWITZERLAND

**BUCCI INDUSTRIES SWISS SA**  
Route Du Granval 3  
Belprahon, Svizzera, 2744  
Phone: +41 324934054

---

### TAIWAN

**MONGTEC PRECISION INC**  
No.156, FUTAIN 3RD ST  
TAICHUNG CITY, Taiwan, 40241  
Phone: +886 422653360

---

### TURKEY

**SELEN MAKINE VE TEKNOLOJI  
HIZ.SAN.TIC.LTD.STI**  
İbrahim Ağa Cd. No:255  
Gebze/Kocaeli, Turchia, 41400  
Phone: +90 2626413208

---

### UNITED KINGDOM

**YMT LTD**  
Tuscan House George Smith Way  
Lufton, Yeovil , Regno Unito, BA22 8QR  
Phone: +44 1935 428375

---

### TDT TECHNOLOGY LTD

Unit 20/Woodside Park  
Rugby, Regno Unito, CV21 2NP  
Phone: +44 1788570411

---

### UNITED STATES

**BUCCI INDUSTRIES USA, INC.**  
9332 Forsyth Park Dr  
Charlotte, Stati Uniti, NC 28273  
Phone: +1 7045838341

---



ALGRA S.p.A. Divisione accessori  
Via Manzoni, 41 24031 Almenno S. Salvatore (BG)  
Tel. +39 035.64.20.51 • Fax +39 035.64.01.28  
algra.accessori@algra.it - www.algra.it