

Quick Turn Nexus (QTN) 200, 250, M/MS/MY/MSY (12 station turret)
Super Quadrex 200, 250 M
Super Quick Turn (SQT) 15, 18, 200, 250 M/MY/MS/MSY (12 station turret)

Toolholder Program

MZ2







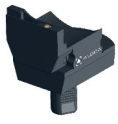


Quick Turn Nexus (QTN) 200, 250, M/MS/MY/MSY/ (12 station turret)

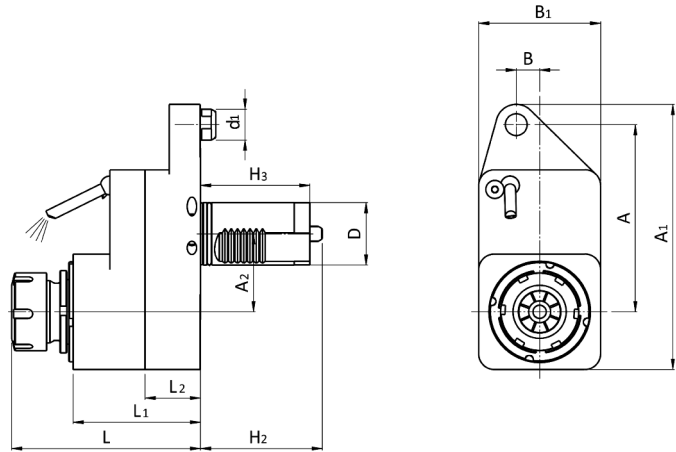
Super Quadrex 200, 250 M


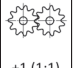

Super Quick Turn (SQT) 15, 18, 200, 250 M/MY/MS/MSY (12 station turret)

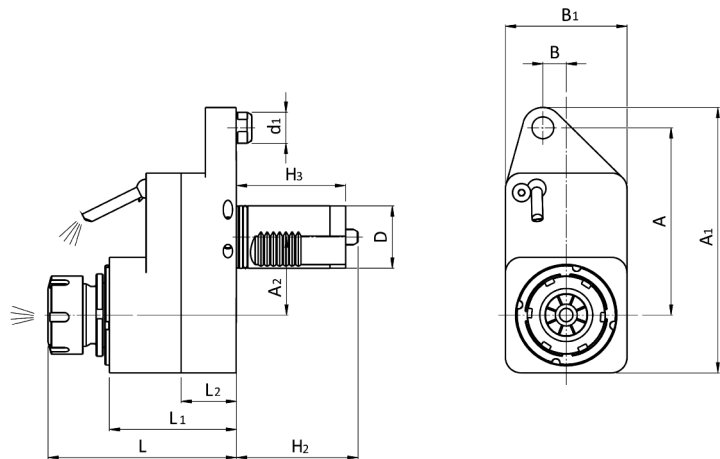
MZ2	Version	Tools Clamping	Center Height	Max. speed	Ratio	External	Internal	Page
	0°	ER32 - DIN6499		6000rpm	i=1:1	RAPPD 40 121DMZ2	RAPPD 40 131DMZ2	4
	0°	Ø22mm - DIN6358		6000rpm	i=1:1	RAPFD 40 121DMZ2/22		5
	90°	ER32 - DIN6499	130mm	6000rpm	i=1:1	RRPPS 40 421DMZ2	RRPPS 40 431DMZ2	6
		ER32 - DIN6499	130mm	6000rpm	i=1:1	RRPPS 40 421RMZ2	RRPPS 40 431RMZ2	7
	90°	Ø22mm - DIN6358	130mm	6000rpm	i=1:1	RRPFS 40 421DMZ2/22		8
		Ø22mm - DIN6358	130mm	6000rpm	i=1:1	RRPFS 40 421RMZ2/22		8
	90° Double	ER32 - DIN6499	130mm	6000rpm	i=1:1	RRPPT 40 421DMZ2		9
	90° Double Offset	ER32 - DIN6499	130mm	6000rpm	i=1:1	RRPPTA 40 421DMZ2		9
	±90°	ER25 - DIN6499		6000rpm	i=1:1	ROPFS 40 121DMZ2	ROPFS 40 131DMZ2	10






Quick Turn Nexus (QTN) 200, 250, M/MS/MY/MSY/ (12 station turret)
 Super Quadrex 200, 250 M
 Super Quick Turn (SQT) 15, 18, 200, 250 M/MY/MS/MSY (12 station turret)

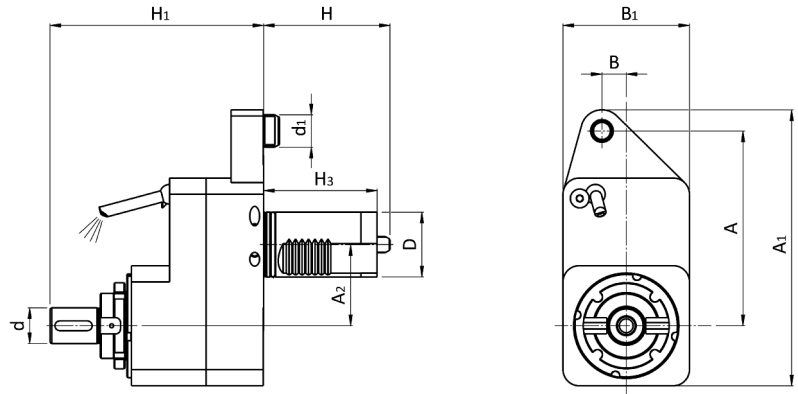
MZ2	Version	Tools Clamping	Center Height	Coolant	ALGRA Part. No.	Page
	Turning tool holder, right hand	□ 25 mm	H:120 mm	External	C1 40X25-MZ2	11
		□ 3/4"	H:120 mm	External	C1 40X0,75"-MZ2	11
	Turning tool holder, left hand	□ 25 mm	H:120 mm	External	C2 40X25-MZ2	11
		□ 3/4"	H:120 mm	External	C2 40X0,75"-MZ2	11
	Multi purpose holder	□ 25 mm	H:120 mm	External	D1 40X25-MZ2	12
		□ 3/4"	H:120 mm	External	D1 40X0,75"-MZ2	12
	Turning tool holder, right hand	□ 25 mm	H:120 mm	External	B1 40X25-MZ2	12
		□ 3/4"	H:120 mm	External	B1 40X0,75"-MZ2	12
	Infeed tool holder	∅ 32 mm	H:124 mm	External	E9 T 40-32-MZ2	13
	Combi holder	∅ 40 mm	H:140 mm	Internal/External	E9 I 40-40/140-MZ2	13
		∅ 1.25"	H:140 mm	Internal/External	E9 I 40-1,25-MZ2	13
	Combi holder	∅ 40 mm	H:140 mm	Internal/External	E9 I 40-40/140T-MZ2	14
		∅ 1.25"	H:140 mm	Internal/External	E9 I 40-1,25/110T-MZ2	14

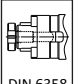
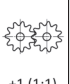



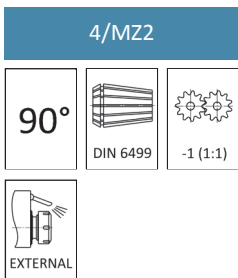
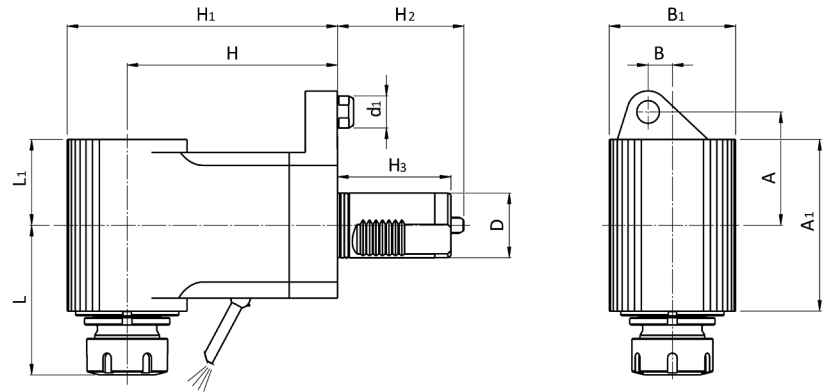
1/MZ2			Codice	D	ER	H	H1	H2	H3	L	L1	L2	A	B	A1	B1	A2	B2	M ₂	n ₂	P
			code - code - Bestell Nr.							(min-max)									Nm	min-1	kW
0°			RAPPD 40 121DMZ2	40	32			78	70	116,2-120	81,5	35,5	120	15	170	78	50		80	6000	5,5
 EXTERNAL																					



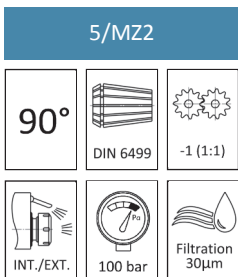
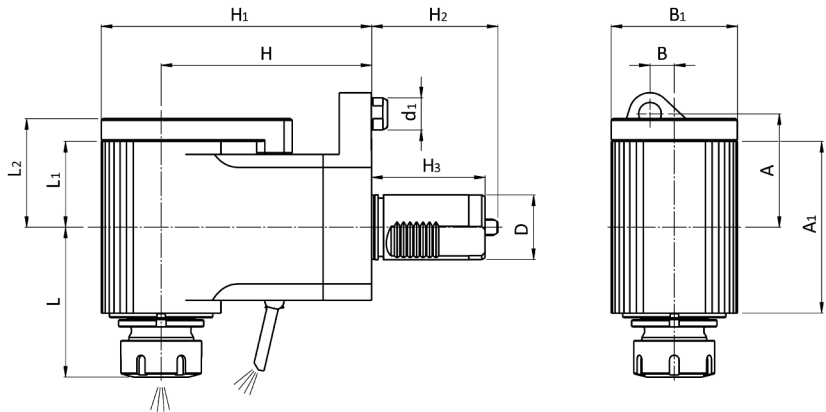
2/MZ2			Codice	D	ER	H	H1	H2	H3	L	L1	L2	A	B	A1	B1	A2	B2	M ₂	n ₂	P
			code - code - Bestell Nr.							(min-max)									Nm	min-1	kW
0°			RAPPD 40 131DMZ2	40	32			78	70	116,2-120	81,5	35,5	120	15	170	78	50		80	6000	5,5
 INT./EXT.																					
 80 bar																					
 Filtration 30µm																					



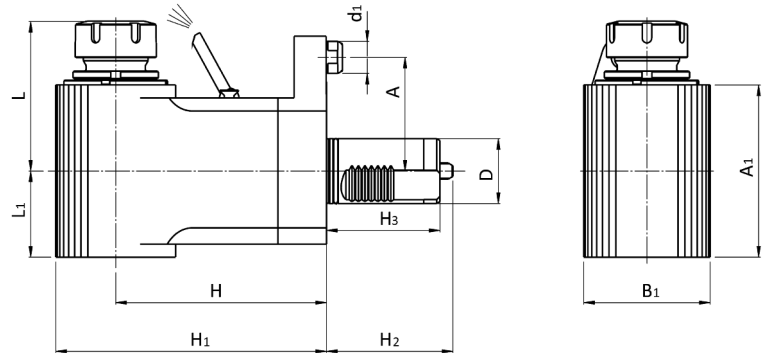
3/MZ2		Codice	D	ER	d	H	H1	H2	H3	L	L1	L2	A	B	A1	B1	A2	M ₂	n ₂	P
		code - code - Bestell Nr.								(min-max)								Nm	min-1	kW
		RAPFD 40 121DMZ2/22	40		22	78	132		70				120	15	170	78	50	80	6000	5,5
0°	 DIN 6358	 +1 (1:1)																		
 EXTERNAL																				






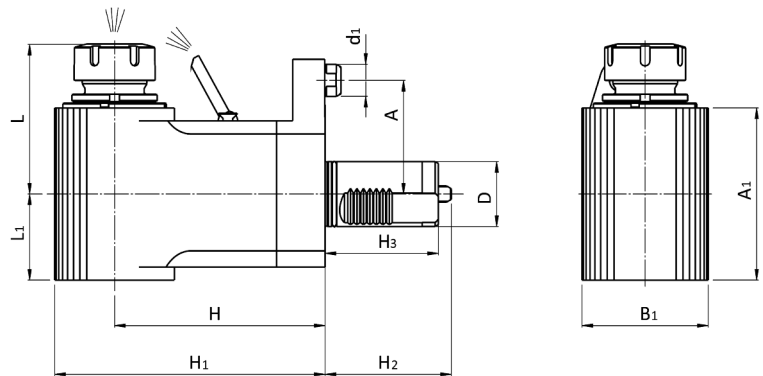
Codice code - code - Bestell Nr.	D	ER	H	H1	H2	H3	L (min-max)	L1	L2	A	B	A1	B1	A2	B2	M ₂ Nm	n ₂ min-1	P kW
RRPPS 40 421DMZ2	40	32	130	167	78	70	90,1-93,8	53		70	15	106	78			80	6000	5,5








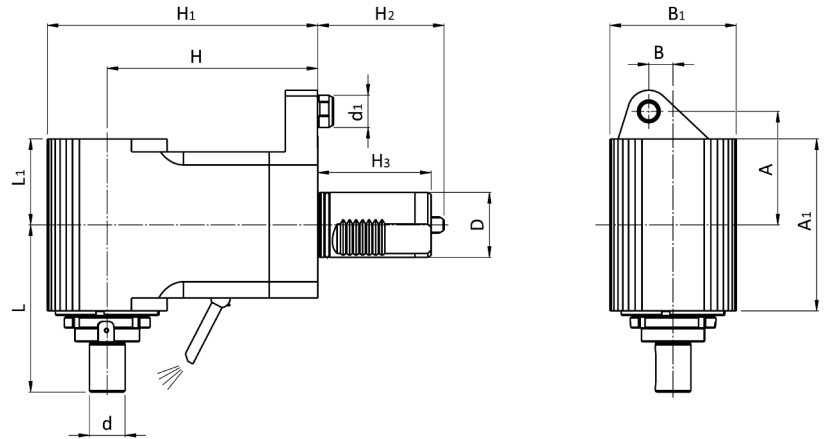
Codice code - code - Bestell Nr.	D	ER	H	H1	H2	H3	L (min-max)	L1	L2	A	B	A1	B1	A2	B2	M ₂ Nm	n ₂ min-1	P kW
RRPPS 40 431DMZ2	40	32	130	167	78	70	90,1-93,8	53	67	70	15	106	78			80	6000	5,5


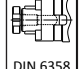
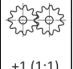



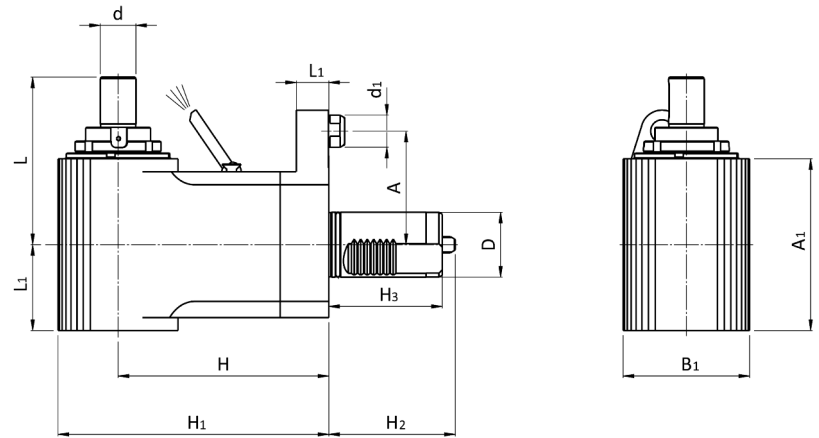
6/MZ2			Codice code - code - Bestell Nr.	D	ER	H	H1	H2	H3	L (min-max)	L1	L2	A	B	A1	B1	A2	B2	M ₂ Nm	n ₂ min-1	P kW
90°			RRPPS 40 421RMZ2	40	32	130	167	78		90,1-93,8	53		70		110	78			80	6000	5,5
 EXTERNAL																					


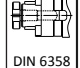
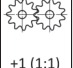



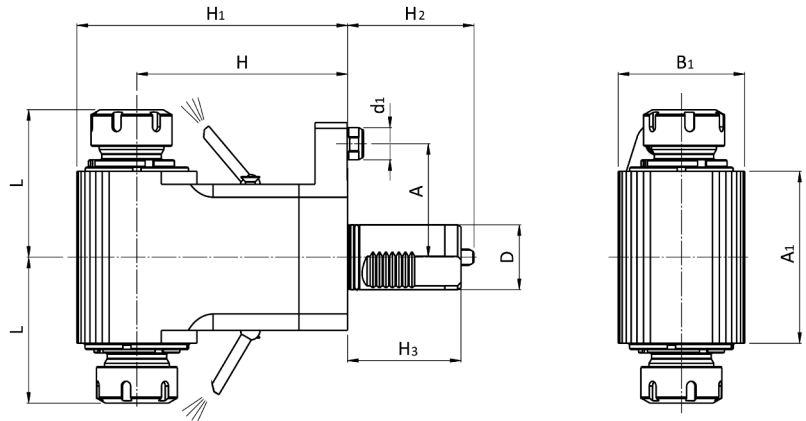
7/MZ2			Codice code - code - Bestell Nr.	D	ER	H	H1	H2	H3	L (min-max)	L1	L2	A	B	A1	B1	A2	B2	M ₂ Nm	n ₂ min-1	P kW
90°			RRPPS 40 431RMZ2	40	32	130	167	78		90,1-93,8	53	67	70		124	78			80	6000	5,5
 INT./EXT.																					
 100 bar																					
 Filtration 30µm																					



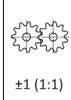



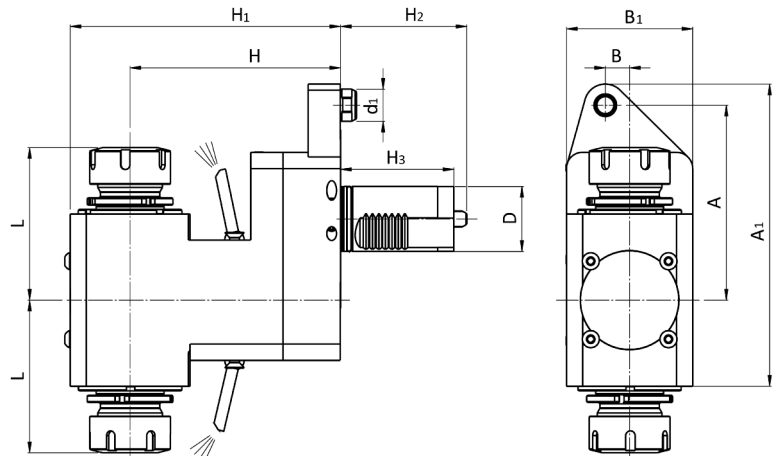
8/MZ2		Codice code - code - Bestell Nr.	D	ER	d	H	H1	H2	H3	L (min-max)	L1	L2	A	B	A1	B1	A2	M ₂ Nm	n ₂ min-1	P kW
   DIN 6358 +1 (1:1)		RRPFS 40 421DMZ2/22	40		22	130	167	78	70	103			70	15	106	78		80	6000	5,5
 EXTERNAL																				



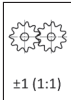



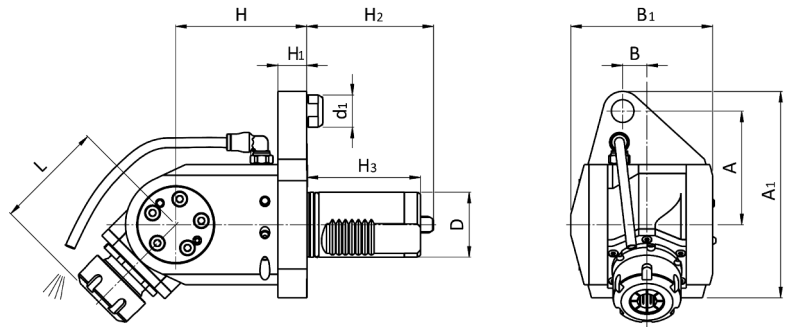
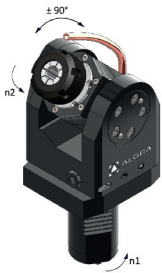
9/MZ2		Codice code - code - Bestell Nr.	D	ER	d	H	H1	H2	H3	L (min-max)	L1	L2	A	B	A1	B1	A2	M ₂ Nm	n ₂ min-1	P kW
   DIN 6358 +1 (1:1)		RRPFS 40 421RMZ2/22	40		22	130	167	78	70	103	53		70		106	78		80	6000	5,5
 EXTERNAL																				






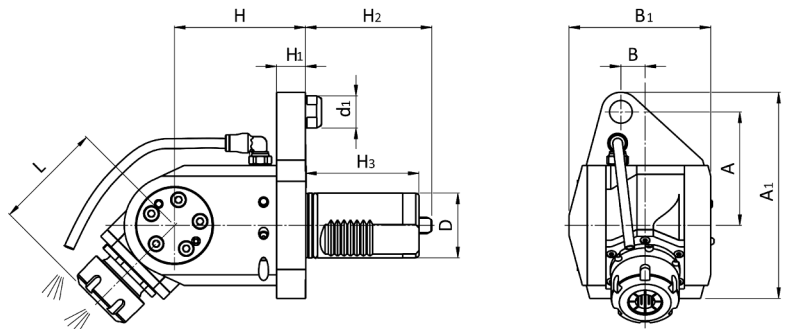
10/MZ2		Codice code - code - Bestell Nr.	D	ER	H	H1	H2	H3	L (min-max)	L1	L2	A	B	A1	B1	A2	B2	M ₂ Nm	n ₂ min-1	P kW	
  		RRPPT 40 421DMZ2	40	32	130	167	78	70	90,1-93,8			70			114	78			80	6000	5,5
																					


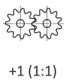





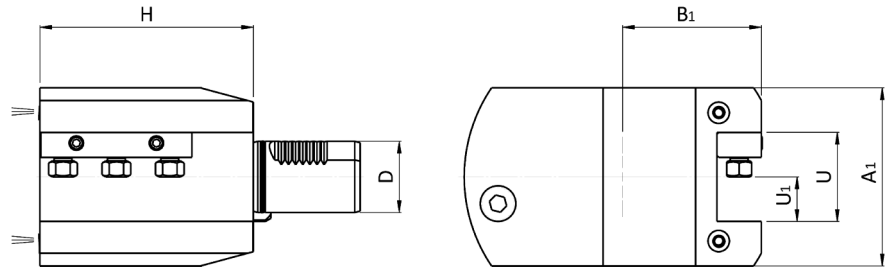
11/MZ2		Codice code - code - Bestell Nr.	D	ER	H	H1	H2	H3	L (min-max)	L1	L2	A	B	A1	B1	A2	B2	M ₂ Nm	n ₂ min-1	P kW	
  		RRPPTA 40 421DMZ2	40	32	130	167	78	70	90,1-93,8			120	15		186	78			80	6000	5,5
																					

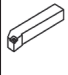



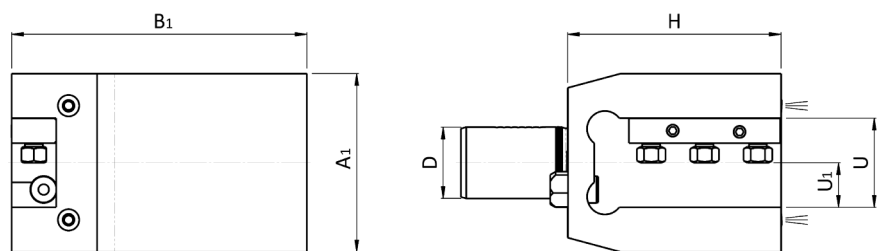
12/MZ2			Codice	D	ER	H	H1	H2	H3	L	L1	L2	A	B	A1	B1	A2	B2	M ₂	n ₂	P
			code - code - Bestell Nr.							(min-max)									Nm	min-1	kW
±90°			ROPPS 40 121DMZ2	40	25	85	18	78	70	63-67,5			70	15	128	87,5			25	6000	4
																					

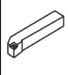
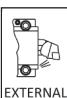


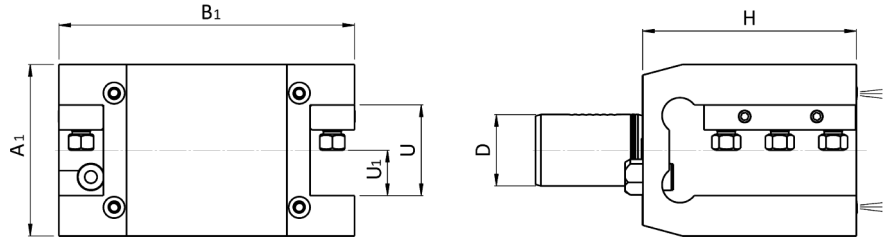
13/MZ2			Codice	D	ER	H	H1	H2	H3	L	L1	L2	A	B	A1	B1	A2	B2	M ₂	n ₂	P
			code - code - Bestell Nr.							(min-max)									Nm	min-1	kW
±90°			ROPPS 40 131DMZ2	40	25	85	18	78	70	63-67,5			70	15	128	87,5			25	6000	4
																					


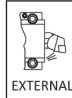


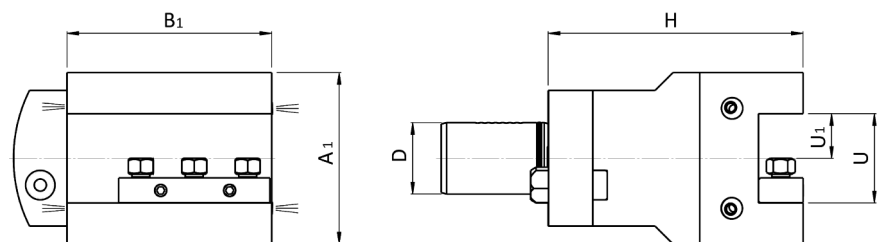
101/MZ2		Codice code - code - Bestell Nr.	U	U1	U2	H	H1	H2	H3	A	B	A1	B1	A2	B2	B3
  EXTERNAL	C1 40X25-MZ2	50	25		120							100	78	40		
	C1 40X0.75"-MZ2	50	0.75"		120							100	78	40		


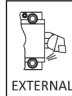


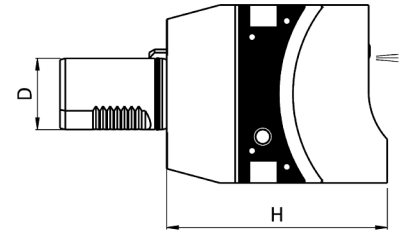
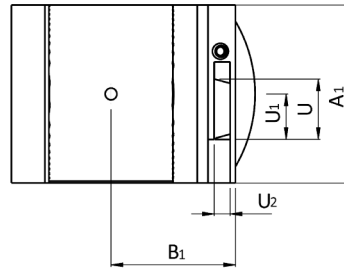
102/MZ2		Codice code - code - Bestell Nr.	U	U1	U2	H	H1	H2	H3	A	B	A1	B1	A2	B2	B3
  EXTERNAL	C2 40X25-MZ2	50	25		120							100				
	C2 40X0.75"-MZ2	50	0.75"		120							100				





103/MZ2		Codice code - code - Bestell Nr.	U	U1	U2	H	H1	H2	H3	A	B	A1	B1	A2	B2	B3
  EXTERNAL	D1 40X25-MZ2		50	25		120						96		40		
	D1 40X0.75"-MZ2		50	0.75"		120						96		40		

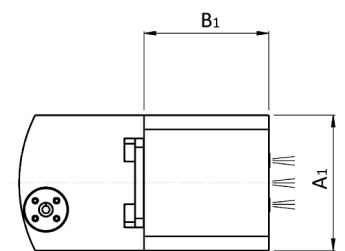
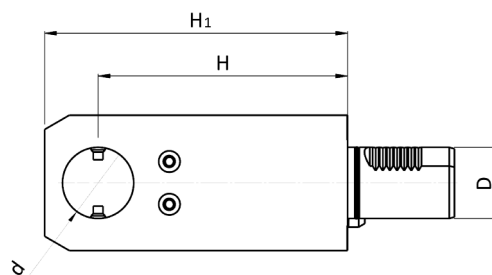




104/MZ2		Codice code - code - Bestell Nr.	U	U1	U2	H	H1	H2	H3	A	B	A1	B1	A2	B2	B3
  EXTERNAL	B1 40X25-MZ2		50	25		143						96	115	40		
	B1 40X0.75"-MZ2		50	0.75"		143						96	115	40		



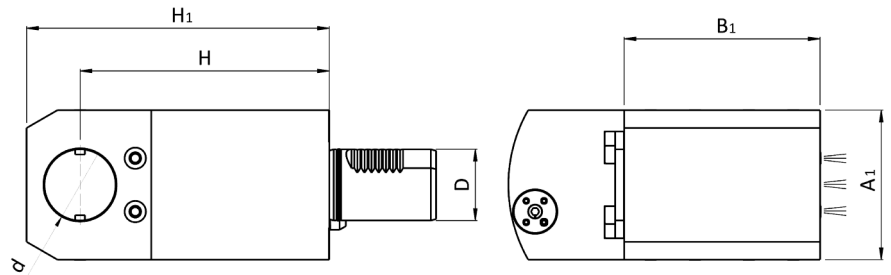
105/MZ2		Codice code - code - Bestell Nr.	U	U1	U2	H	H1	H2	H3	A	B	A1	B1	A2	B2	B3
		E9 T 40-32-MZ2	32			124						100	70	40		



EXTERNAL



106/MZ2		Codice code - code - Bestell Nr.	D	d	U2	H	H1	H2	H3	A	B	A1	B1	A2	B2	B3
		E9 I 40-40/140-MZ2	40			140	170					76	70	40		
		E9 I 40-1.25/110-MZ2	1.25"			120	170					76	70	40		

INT./EXT.



107/MZ2		Codice	D	d	U2	H	H1	H2	H3	A	B	A1	B1	A2	B2	B3
		code - code - Bestell Nr.														
  INT./EXT.		E9 I 40-40/140T-MZ2	40			170						84	110	40		
		E9 I 40-1.25/110T-MZ2	1.25"			170						84	110	40		

**La produzione:
il lavoro**

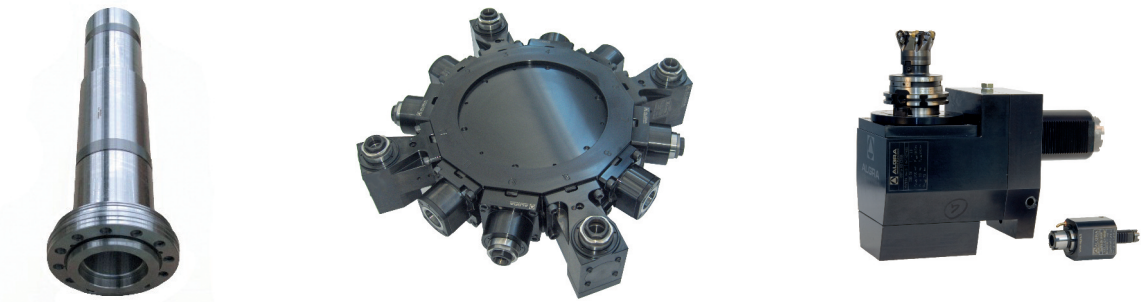
Production:
work

La produzione viene sviluppata nella moderna struttura a temperatura controllata di Almenno San Salvatore, mentre negli stabilimenti di Brembilla (I-Bergamo) vengono effettuate le lavorazioni di montaggio ed assemblaggio di gruppi completi. La superficie coperta delle strutture è di mq. 15.000, dei quali mq. 1.000 sono adibiti agli uffici amministrativi, commerciali e tecnici. L'attività produttiva si svolge con l'utilizzo di impianti e macchinari CNC costantemente aggiornati alle nuove tecnologie ed in grado di sviluppare le seguenti lavorazioni:

- Asportazione di truciolo
- Elettroerosione
- Tornitura orizzontale e verticale
- Fresatura universale 5 assi
- Fresatura/tornitura
- Lappatura per fori e piani
- Rettifica in tondo interno ed esterno
- Rettifica in tangenziale oltre al montaggio di gruppi e sottogruppi completi.

The production is developed in the modern, temperature controlled facility in Almenno San Salvatore, with Brembilla factories there are the assembly operations and the assembly of complete groups. The facilities covered area is of 15,000 sqm., 1,000 sqm. of which are used for the administrative commercial and technical offices. The production cycle takes place with the use of CNC fixtures and equipment constantly updated with new technologies and able to develop the following machining:

- Chip machining
- Electroerosion
- Horizontal and vertical turning
- 5-axis universal milling
- Milling/turning
- Lapping for holes and plane surfaces
- Cylindrical internal and external grinding
- Tangential grinding in addition to the assembly of complete groups and subassemblies.

**Certificazioni:
uno standard
qualitativo**

Certification:
a quality
standard

La tecnologia avanzata svolge un ruolo chiave nell'obiettivo di incrementare il proprio valore, quello dei propri prodotti, dei servizi e della capacità del personale, operando nel rispetto delle norme UNI EN ISO 9001:2008 e ISO 14001:2004. L'alto livello di sensibilità verso il rispetto delle regole di sicurezza e dell'ambiente è presente ed immediatamente percepito in tutte le strutture aziendali.

Advanced technology plays a key role aiming to increase its value and the products, services and staff capacity value, operating in compliance with UNI EN ISO 9001:2008 and ISO 14001:2004.

The high level of sensitivity towards the observance of safety rules and the environment is present and perceived immediately in all facilities.



UNI EN ISO 9001:2008 - Cert. n° 0141



UNI EN ISO 14001:2004 - Cert. n° 0270A



ALGRA S.p.A. Divisione accessori
Via Manzoni, 41 24031 Almenno S. Salvatore (BG)
Tel. +39 035.64.20.51 • Fax +39 035.64.01.28
algra.accessori@algra.it - www.algra.it