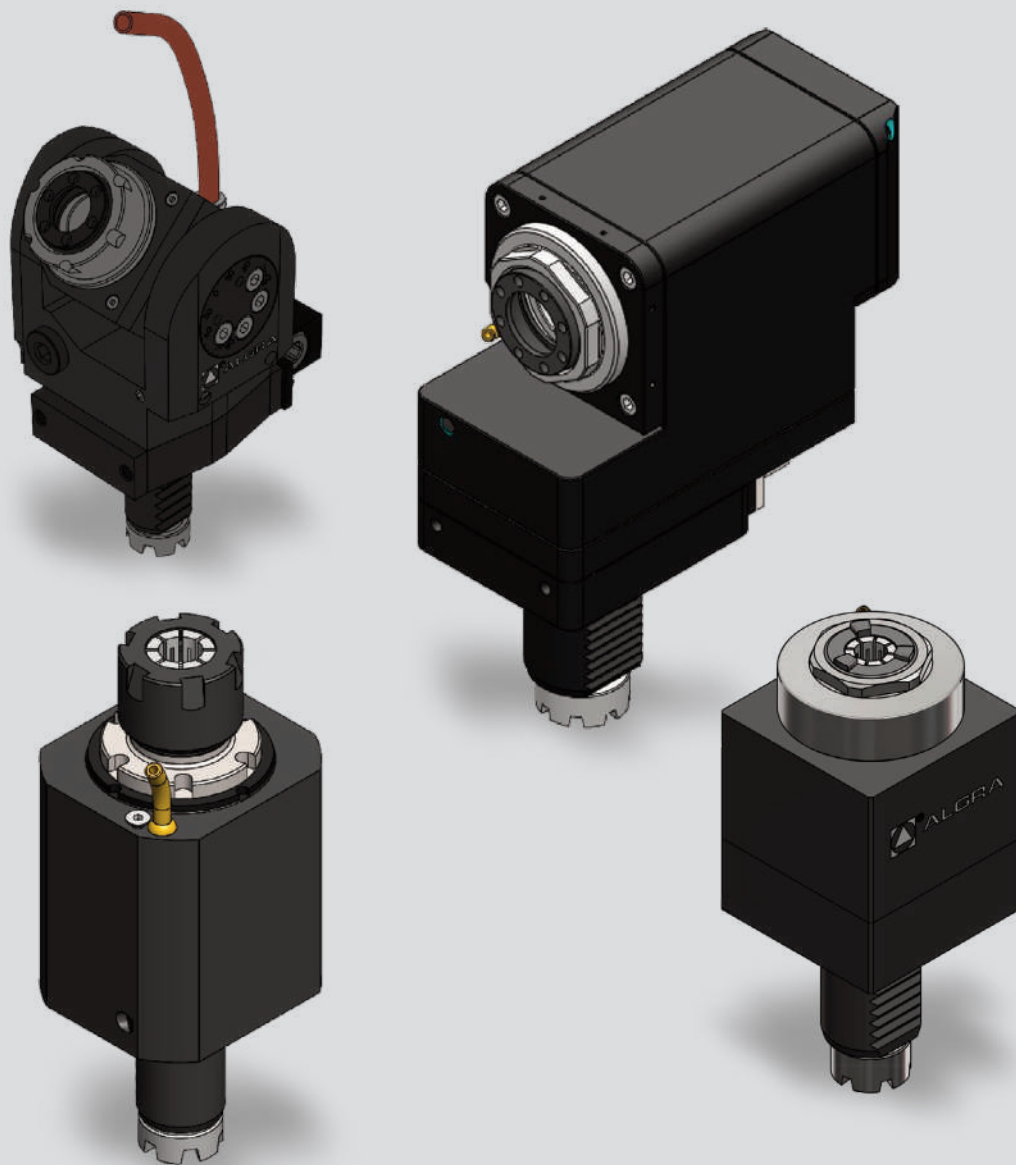
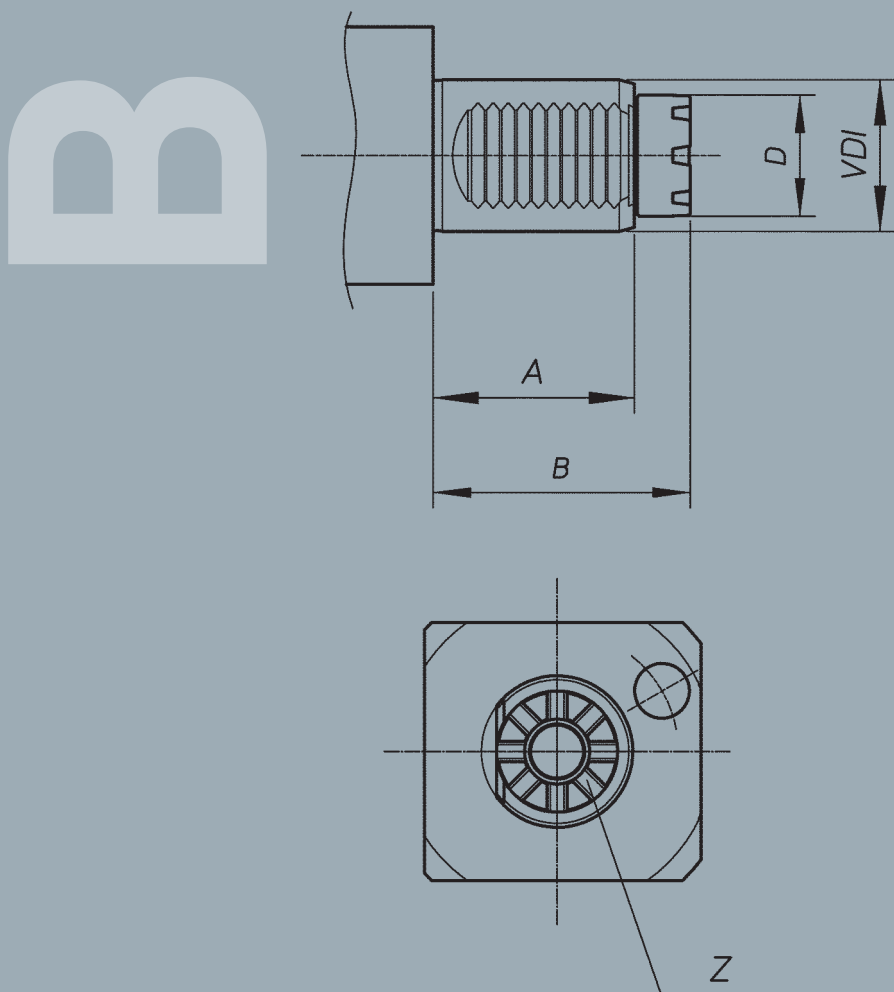


Toolholder Program

BARUFFALDI



B
BARUFFALDI



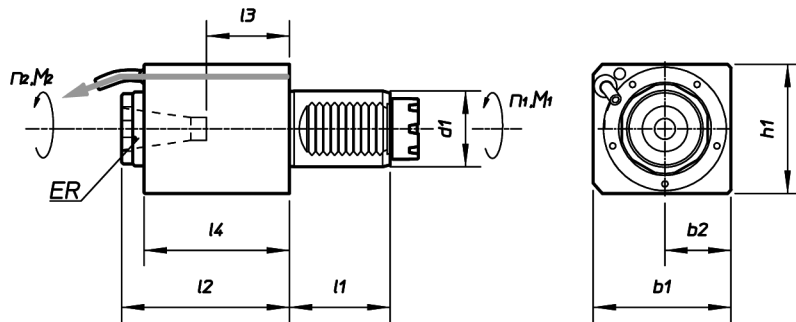
VDI	A	B	D	Z	
20	35	44	19	6	
30	45/53	59	24	6	
40	53	68	32	8	
50	70	84	40	8	
60	83	100	43	8	

3/B

 Assiale
 Axial
 Axial
 Axial

 Portapinza
 Collet chuck
 Pince de serrage
 Spannzangeaufnahme

 Refrigerazione esterna
 External coolant supply
 Alimentation d'arrosage extérieur
 Kühlschmierstoffzuführung extern

 $i = n1:n2 = +0,25 (1:4)$


Codice - code - code - Bestell Nr.	d1	ER	l1	l2	l3	l4	b1	b2	h1	M ₂ Nm	n ₂ min-1	p kw		
RAPPS 20 122UB	20	16	35	100	68	85	50	25	56	3	24000	3		
RAPPS 30 122UB	30	16	45	100	58	88	62	31	64	8	20000	4		
RAPPS 40 122UB	40	20	53	112,5	74,5	106	76	38	76	16	16000	5		

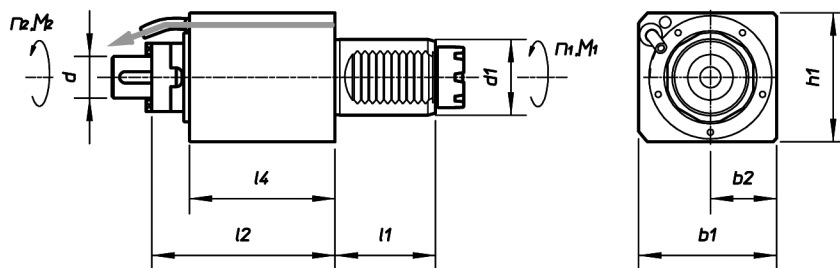

B
 BARUFFALDI

4/B

 Assiale
 Axial
 Axial
 Axial

 Portafresa
 Shell end milling cutters
 Fraises enfichables
 Fräseraufnahme

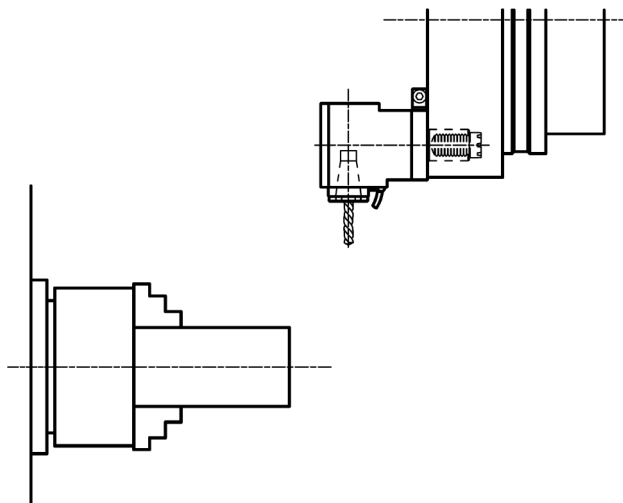
 Refrigerazione esterna
 External coolant supply
 Alimentation d'arrosage extérieur
 Kühlschmierstoffzuführung extern

 $i = n1:n2 = +1 (1:1)$


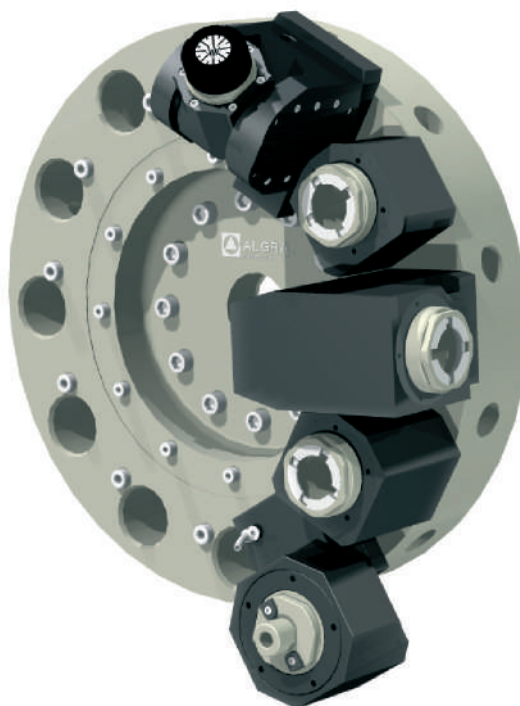
Codice - code - code - Bestell Nr.	d1	ER	l1	l2	l3	l4	b1	b2	h1	M ₂ Nm	n ₂ min-1	p kw		
RAPFS 30 121UB	30	Ø 22	45	112		88	62	31	64	32	5000	8		
RAPFS 40 121UB	40	Ø 22	53	124		99	73	35	70	63	4000	10		



Portautensili radiali per dischi assiali
Radial driven tools for axial tooldiscs
Porte outils radial pour plateau axial
Werkzeughalter radial für axiale werkzeugscheiben



B
BARUFFALDI

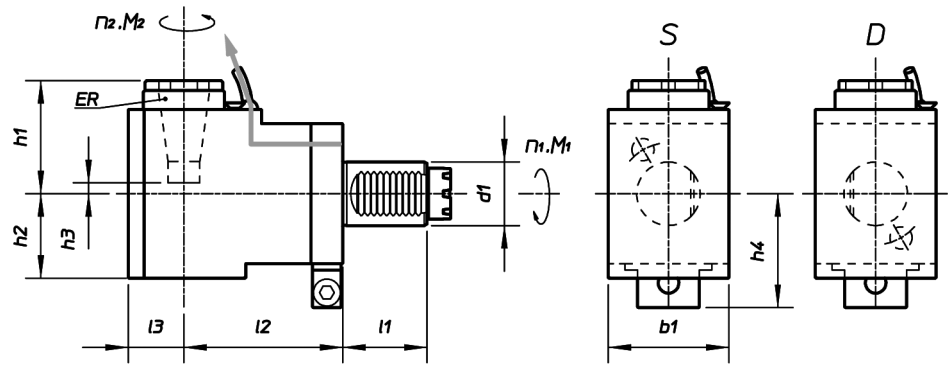


5/B

 Radiale
 Radial
 Radial
 Radial

 Portapinza
 Collet chuck
 Pince de serrage
 Spannzangeaufnahme

 Refrigerazione esterna
 External coolant supply
 Alimentation d'arrosage extérieur
 Kühlschmierstoffzuführung extern

 $i = n_1:n_2 = -1 (1:1)$


Codice - code - code - Bestell Nr.		d1	ER	l1	l2	l3	b1	h1	h2	h3	h4	M ₂	n ₂	p
S	D											Nm	min-1	kw
RRPPS 20 121SB	RRPPS 20 121DB	20	20	35	60	25	50	60	38	19	57	13	6000	5
RRPPS 30 121SB	RRPPS 30 121DB	30	25	45	55	31	64	56	48	3	52	32	6000	8
RRPPS 30 321SB	RRPPS 30 321DB	30	25	45	85	31	64	56	48	3	52	32	6000	8
RRPPS 30 421SB	RRPPS 30 421DB	30	25	45	100	31	64	56	48	3	52	32	6000	8
RRPPS 40 121SB	RRPPS 40 121DB	40	32	53	100	35	76	71	55	11	71	63	5000	10
RRPPS 50 121SB	RRPPS 50 121DB	50	40	70	110	44	88	92	73	16	79	100	4000	12
RRPPS 60 121SB	RRPPS 60 121DB	60	50	83	130	52	110	149	83	46	100	160	3200	15

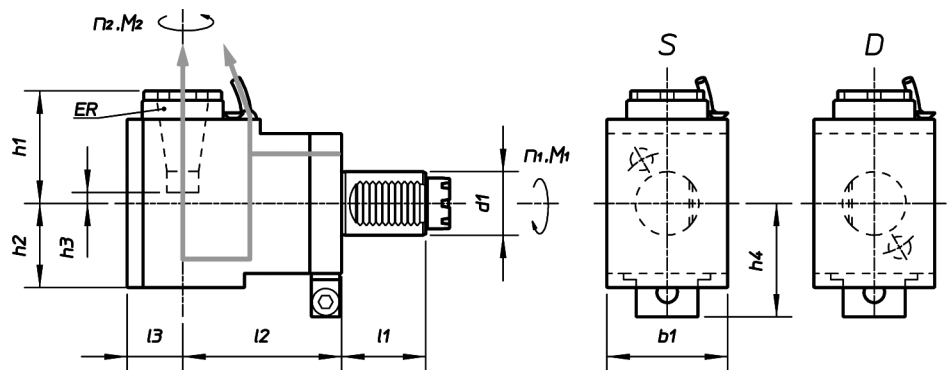
B
 BARUFFALDI

6/B

 Radiale
 Radial
 Radial
 Radial

 Portapinza
 Collet chuck
 Pince de serrage
 Spannzangeaufnahme

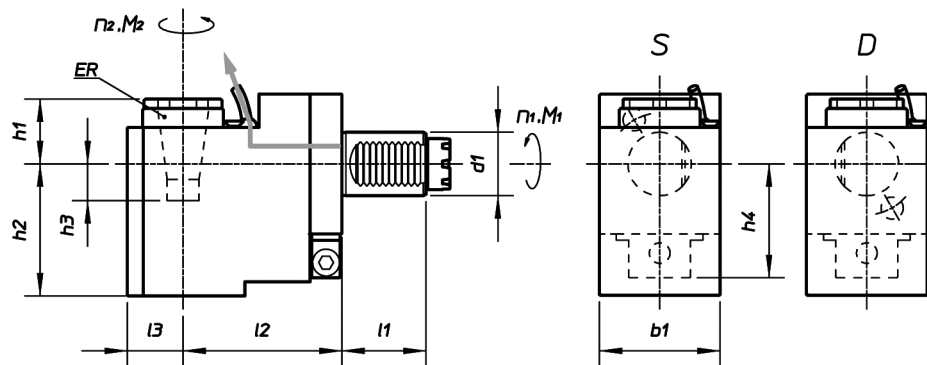
 Refrigerazione interna-esterna
 External and internal coolant supply
 Alimentation d'arrosage extérieur et intérieur
 Kühlschmierstoffzuführung extern und intern

 $i = n_1:n_2 = -1 (1:1)$


Codice - code - code - Bestell Nr.		d1	ER	l1	l2	l3	b1	h1	h2	h3	h4	M ₂	n ₂	p
S	D											Nm	min-1	kw
RRPPS 30 131SB	RRPPS 30 131DB	30	25	45	55	31	64	56	60	3	52	32	6000	8
RRPPS 30 331SB	RRPPS 30 331DB	30	25	45	85	31	64	56	60	3	52	32	6000	8
RRPPS 30 431SB	RRPPS 30 431DB	30	25	45	100	31	64	56	60	3	52	32	6000	8
RRPPS 40 131SB	RRPPS 40 131DB	40	32	53	100	35	76	71	62	11	71	63	5000	10
RRPPS 50 131SB	RRPPS 50 131DB	50	40	70	110	44	88	92	73	16	79	100	4000	12
RRPPS 60 131SB	RRPPS 60 131DB	60	50	83	130	52	110	149	83	46	100	160	3200	15

7/B

Arretrato Rear offset Décalée en arrière Zurückgesetzt	Portapinza Collet chuck Pince de serrage Spannzangeaufnahme	Refrigerazione esterna External coolant supply Alimentation d'arrosage extérieur Kühlschmierstoffzuführung extern
---	--	--

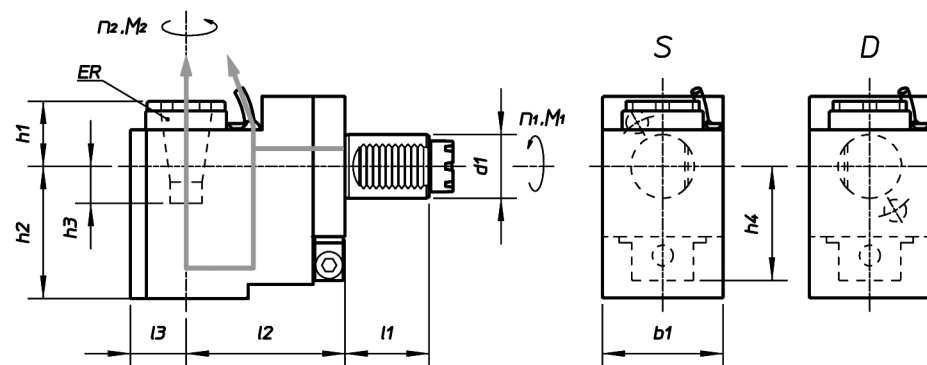
 $i = n_1:n_2 = +1 (1:1)$


Codice - code - code - Bestell Nr.		d1	ER	l1	l2	l3	b1	h1	h2	h3	h4	M ₂ Nm	n ₂ min-1	p kw
S	D													
RRPPA 20 321SB	RRPPA 20 321DB	20	16	35	75	26	50	28	48	4	56	13	6000	5
RRPPA 30 321SB	RRPPA 30 321DB	30	25	45	85	31	64	14,5	90	45	52	32	5000	8
RRPPA 40 121SB	RRPPA 40 121DB	40	32	53	100	35	76	20	106	40	72,5	63	4000	10
RRPPA 50 121SB	RRPPA 50 121DB	50	40	70	110	44	88	31	176	46	79	100	4000	12

B
 BARUFFALDI

8/B

Arretrato Rear offset Décalée en arrière Zurückgesetzt	Portapinza Collet chuck Pince de serrage Spannzangeaufnahme	Refrigerazione interna-esterna External and internal coolant supply Alimentation d'arrosage extérieur et intérieur Kühlschmierstoffzuführung extern und intern
---	--	---

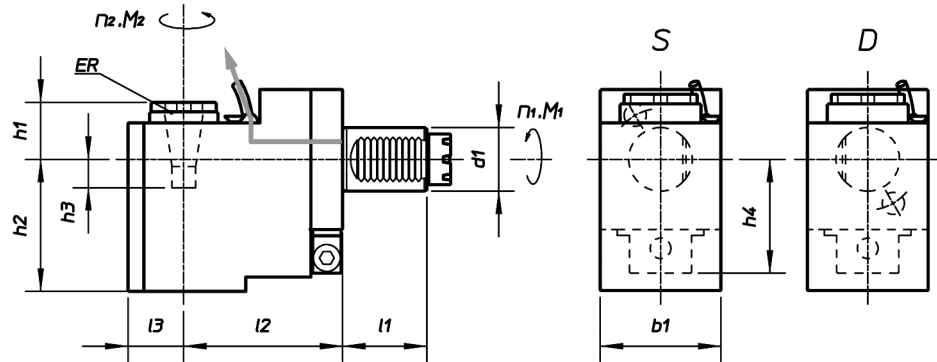
 $i = n_1:n_2 = +1 (1:1)$


Codice - code - code - Bestell Nr.		d1	ER	l1	l2	l3	b1	h1	h2	h3	h4	M ₂ Nm	n ₂ min-1	p kw
S	D													
RRPPA 30 331SB	RRPPA 30 331DB	30	25	45	85	31	64	24	105,5	45,5	52	32	5000	8
RRPPA 40 131SB	RRPPA 40 131DB	40	32	53	100	35	76	30	124	40	72,5	63	4000	10
RRPPA 50 131SB	RRPPA 50 131DB	50	40	70	110	44	88	44	136	46	79	100	4000	12

9/B
Arretrato
 Rear offset
 Décalée en arrière
 Zurückgesetzt

Portapinza
 Collet chuck
 Pince de serrage
 Spannzangeaufnahme

Refrigerazione esterna
 External coolant supply
 Alimentation d'arrosage extérieur
 Kühlschmierstoffzuführung extern

 $i = n_1:n_2 = +0,25 (1:4)$


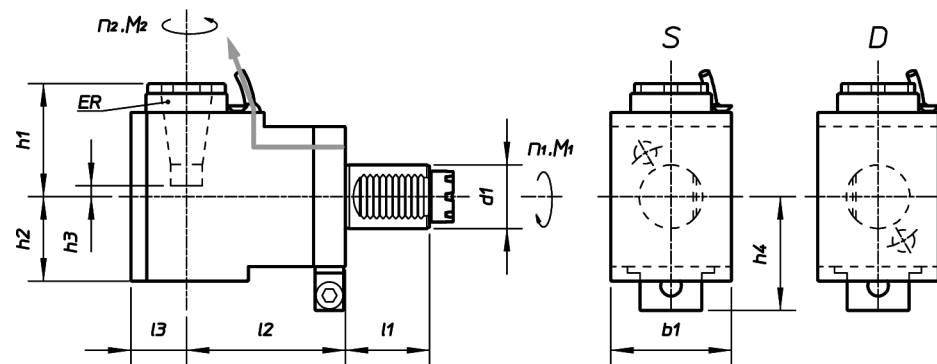
Codice - code - code - Bestell Nr.		d1	ER	l1	l2	l3	b1	h1	h2	h3	h4	M ₂	n ₂	p
S	D											Nm	min-1	kw
RRPPA 20 122SB	RRPPA 20 122DB	20	16	35	75	26	50	28	48	4	56	3	24000	3
RRPPA 30 122SB	RRPPA 30 122DB	30	16	45	95	21	64	33	84	15	56	8	20000	4
RRPPA 40 122SB	RRPPA 40 122DB	40	20	53	125	27	76	45	108	10	65,5	16	16000	5

B
 BARUFFALDI

10/B
Radiale
 Radial
 Radial
 Radial

Portapinza
 Collet chuck
 Pince de serrage
 Spannzangeaufnahme

Refrigerazione esterna
 External coolant supply
 Alimentation d'arrosage extérieur
 Kühlschmierstoffzuführung extern

 $i = n_1:n_2 = -2 (2:1)$


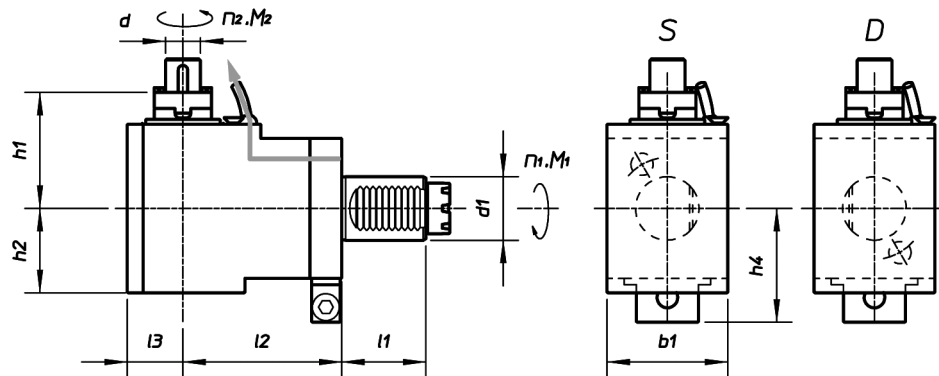
Codice - code - code - Bestell Nr.		d1	ER	l1	l2	l3	b1	h1	h2	h3	h4	M ₂	n ₂	p
S	D											Nm	min-1	kw
RRPPS 30 123SB	RRPPS 30 123DB	30	25	45	55	31	64	56,5	48	3	52	63	2500	8
RRPPS 40 123SB	RRPPS 40 123DB	40	32	53	100	35	76	71	55	-11	72,5	63	2000	8

11/B

 Radiale
 Radial
 Radial
 Radial

 Portafresa
 Shell end milling cutters
 Fraises enfichables
 Fräseraufnahme

 Refrigerazione esterna
 External coolant supply
 Alimentation d'arrosage extérieur
 Kühlschmierstoffzuführung extern

 $i = n_1:n_2 = -2 (2:1)$


Codice - code - code - Bestell Nr.		d1	d	l1	l2	l3	b1	h1	h2	h4	M ₂	n ₂	p	
S	D										Nm	min-1	kw	
RRPFS 30 123SB	RRPFS 30 123DB	30	Ø 22	45	55	31	64	74	48	52	63	2500	8	
RRPFS 40 123SB	RRPFS 40 123DB	40	Ø 22	53	100	35	76	78	55	72,5	63	2000	8	

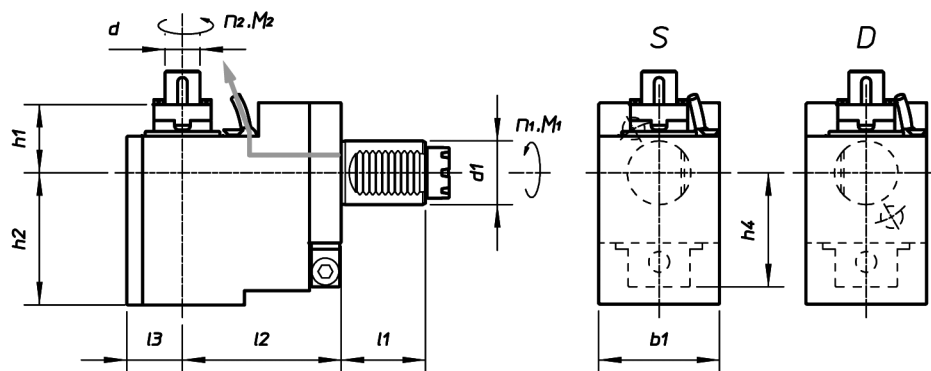
B
 BARUFFALDI

12/B

 Arretrato
 Rear offset
 Décalée en arrière
 Zurückgesetzt

 Portafresa
 Shell end milling cutters
 Fraises enfichables
 Fräseraufnahme

 Refrigerazione esterna
 External coolant supply
 Alimentation d'arrosage extérieur
 Kühlschmierstoffzuführung extern

 $i = n_1:n_2 = +1 (1:1)$


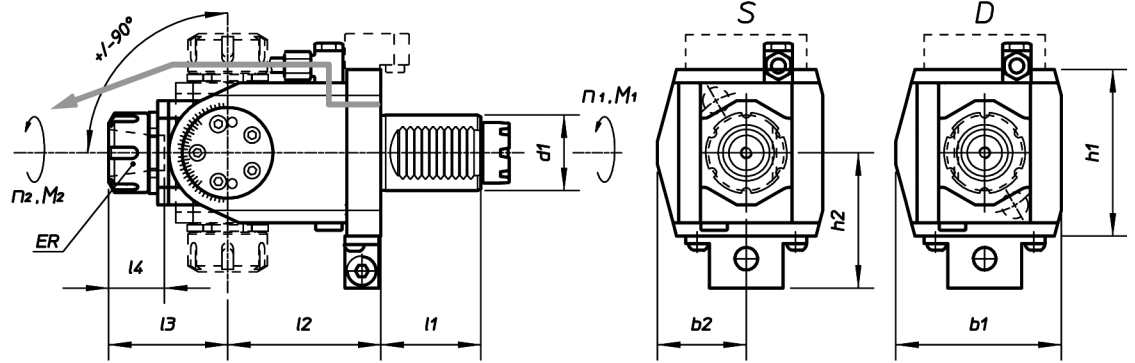
Codice - code - code - Bestell Nr.		d1	d	l1	l2	l3	b1	h1	h2	h4	M ₂	n ₂	p	
S	D										Nm	min-1	kw	
RRPFA 30 321SB	RRPFA 30 321DB	30	Ø 22	45	85	31	64	32	90	52	32	2500	8	
RRPFA 40 121SB	RRPFA 40 121DB	40	Ø 22	53	100	35	76	27	106	72,5	63	4000	10	

15/B

 Orientabile
 Angle adjustable
 Angle réglable
 winkeleinstellbar

 Portapinza
 Collet chuck
 Pince de serrage
 Spannzangeaufnahme

 Refrigerazione esterna
 External coolant supply
 Alimentation d'arrosage extérieur
 Kühlschmierstoffzuführung extern

 $i = n_1:n_2 = +1 (1:1)$


Codice - code - code - Bestell Nr.		d1	ER	l1	l2	l3	l4	b1	h1	h2	h3	M ₂	n ₂	p
S	D											Nm	min-1	kw
ROPPS 30 221SB	ROPPS 30 221DB	30	20	45	64	52	37	70	37	64	54	15	6000	3
ROPPS 30 321SB	ROPPS 30 321DB	30	20	45	97	52	37	70	37	64	54	15	6000	3
ROPPS 40 121SB	ROPPS 40 121DB	40	25	53	81	63	42	87	47	88	71	25	5000	4

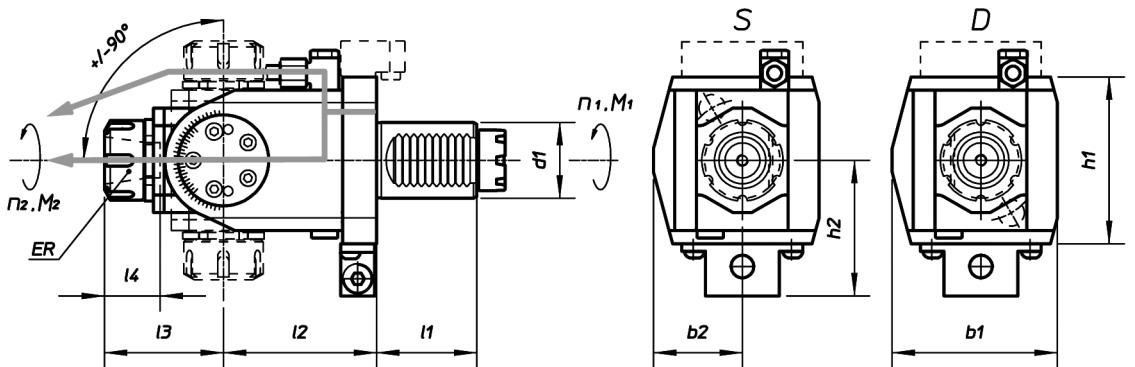
B
 BARUFFALDI

16/SB

 Orientabile
 Angle adjustable
 Angle réglable
 winkeleinstellbar

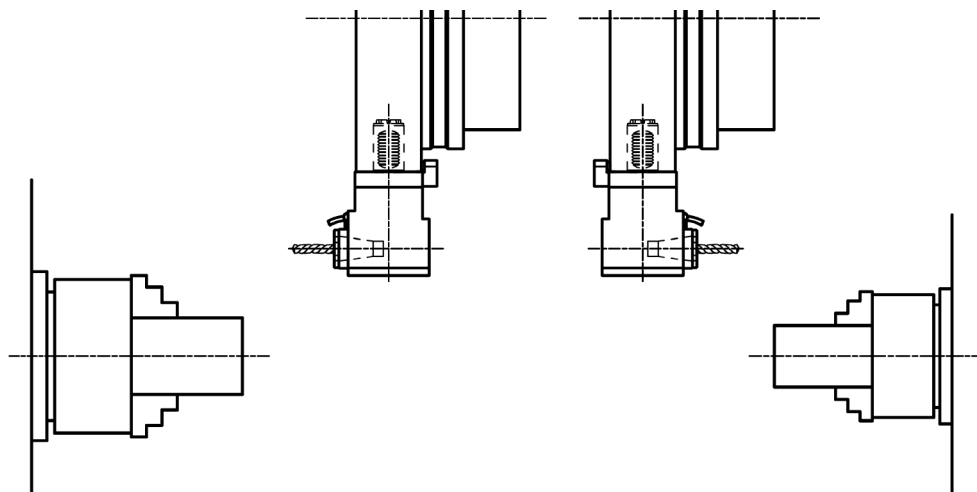
 Portapinza
 Collet chuck
 Pince de serrage
 Spannzangeaufnahme

 Refrigerazione interna-esterna
 External and internal coolant supply
 Alimentation d'arrosage extérieur et intérieur
 Kühlschmierstoffzuführung extern und intern

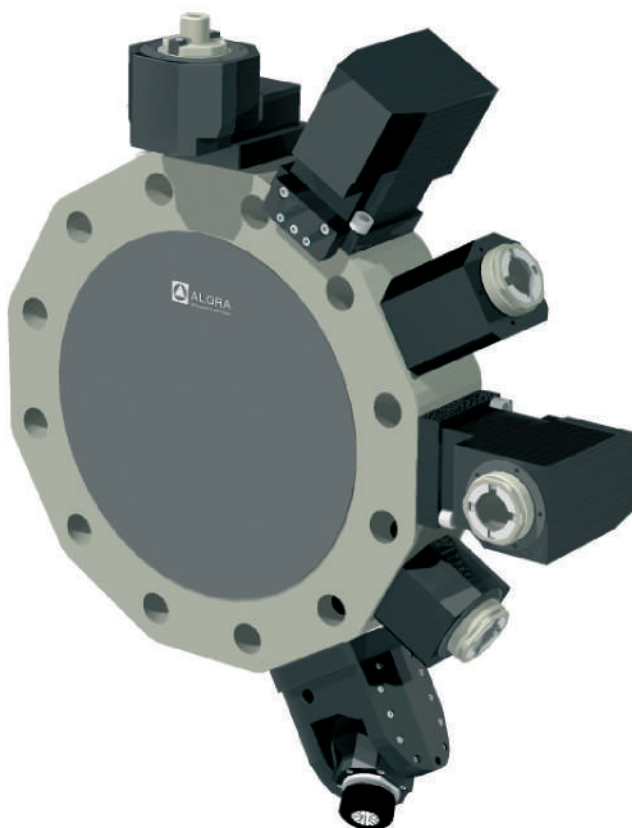
 $i = n_1:n_2 = +1 (1:1)$


Codice - code - code - Bestell Nr.		d1	ER	l1	l2	l3	b1	h1	h2	h3	h4	M ₂	n ₂	p
S	D											Nm	min-1	kw
ROPPS 30 231SB	ROPPS 30 231DB	30	20	45	64	52	37	70	37	64	54	15	6000	3
ROPPS 30 331SB	ROPPS 30 331DB	30	20	45	97	52	37	70	37	64	54	15	6000	3
ROPPS 40 131SB	ROPPS 40 131DB	40	25	53	81	63	42	87	47	88	71	25	5000	4

Portautensili radiali per dischi radiali
Radial driven tools for radial tooldiscs
Porte outils radial pour plateau radial
Werkzeughalter radial für radial werkzeugscheiben



B
BARUFFALDI

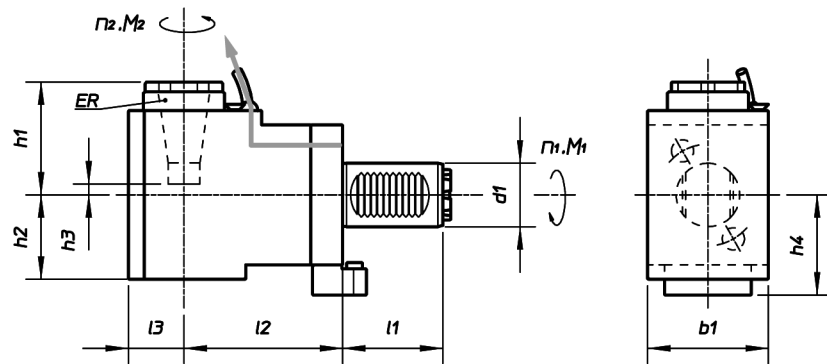


17/UB

 Radiale
 Radial
 Radial
 Radial

 Portapinza
 Collet chuck
 Pince de serrage
 Spannzangeaufnahme

 Refrigerazione esterna
 External coolant supply
 Alimentation d'arrosage extérieur
 Kühlschmierstoffzuführung extern

 $i = n_1:n_2 = -1 (1:1)$


Codice - code - code - Bestell Nr.	d1	ER	l1	l2	l3	b1	h1	h2	h3	h4	M ₂ Nm	n ₂ min-1	p kw
RRPPS 30 121UB	30	25	53	55	31	64	56	48	3	53	32	6000	8
RRPPS 30 321UB	30	25	53	85	31	64	56	48	3	53	32	6000	8
RRPPS 30 421UB	30	25	53	100	31	64	56	48	3	53	32	6000	8
RRPPS 50 121UB	50	40	70	110	44	88	92	73	16	68	100	4000	12

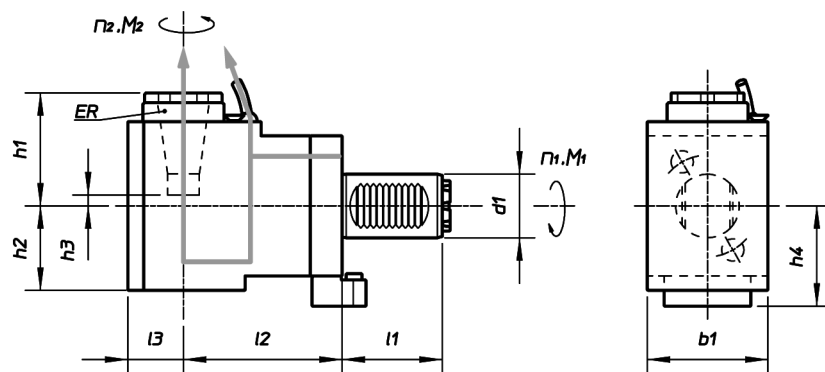
B
 BARUFFALDI

18/UB

 Radiale
 Radial
 Radial
 Radial

 Portapinza
 Collet chuck
 Pince de serrage
 Spannzangeaufnahme

 Refrigerazione interna-esterna
 External and internal coolant supply
 Alimentation d'arrosage extérieur et intérieur
 Kühlschmierstoffzuführung extern und intern

 $i = n_1:n_2 = -1 (1:1)$


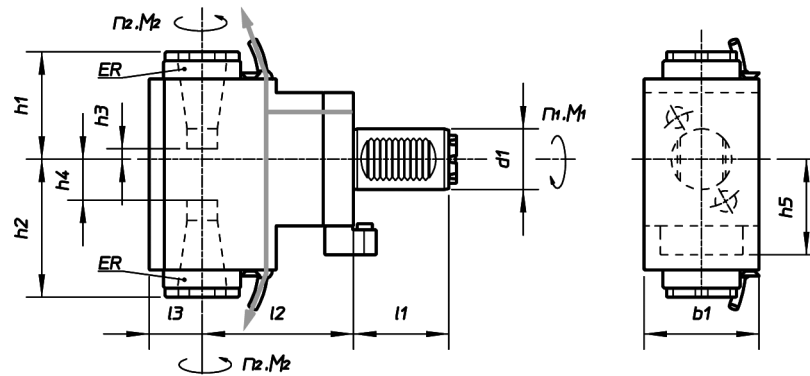
Codice - code - code - Bestell Nr.	d1	ER	l1	l2	l3	b1	h1	h2	h3	h4	M ₂ Nm	n ₂ min-1	p kw
RRPPS 30 131UB	30	25	53	55	31	64	56	60	3	53	32	6000	8
RRPPS 30 331UB	30	25	53	85	31	64	56	60	3	53	32	6000	8
RRPPS 30 431UB	30	25	53	100	31	64	56	60	3	53	32	6000	8
RRPPS 50 131UB	50	40	70	110	44	88	92	62	16	68	100	4000	12

21/UB

 Doppio
 Double
 Double
 2 Fach

 Portapinza
 Collet chuck
 Pince de serrage
 Spannzangeaufnahme

 Refrigerazione esterna
 External coolant supply
 Alimentation d'arrosage extérieur
 Kühlschmierstoffzuführung extern

 $i = n_1:n_2 = -1 (1:1)$


Codice - code - code - Bestell Nr.	d1	ER	l1	l2	l3	b1	h1	h2	h3	h4	h5	M ₂ Nm	n ₂ min-1	p kw
RRPPT 30 421UB	30	25	53	110	31	64	56	68	7	23	53	32	6000	8
RRPPT 50 321UB	50	40	70	140	44	88	93	106	39	52	68	100	4000	12

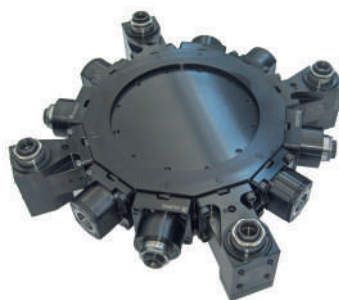
**La produzione:
il lavoro**
Production:
work

La produzione viene sviluppata nella moderna struttura a temperatura controllata di Almenno San Salvatore, mentre negli stabilimenti di Brembilla (I-Bergamo) vengono effettuate le lavorazioni di montaggio ed assemblaggio di gruppi completi. La superficie coperta delle strutture è di mq. 15.000, dei quali mq. 1.000 sono adibiti agli uffici amministrativi, commerciali e tecnici. L'attività produttiva si svolge con l'utilizzo di impianti e macchinari CNC costantemente aggiornati alle nuove tecnologie ed in grado di sviluppare le seguenti lavorazioni:

- Asportazione di truciolo
- Elettroerosione
- Tornitura orizzontale e verticale
- Fresatura universale 5 assi
- Fresatura/tornitura
- Lappatura per fori e piani
- Rettifica in tondo interno ed esterno
- Rettifica in tangenziale oltre al montaggio di gruppi e sottogruppi completi.

The production is developed in the modern, temperature controlled facility in Almenno San Salvatore, with Brembilla factories there are the assembly operations and the assembly of complete groups. The facilities covered area is of 15,000 sqm., 1,000 sqm. of which are used for the administrative commercial and technical offices. The production cycle takes place with the use of CNC fixtures and equipment constantly updated with new technologies and able to develop the following machining:

- Chip machining
- Electroerosion
- Horizontal and vertical turning
- 5-axis universal milling
- Milling/turning
- Lapping for holes and plane surfaces
- Cylindrical internal and external grinding
- Tangential grinding in addition to the assembly of complete groups and subassemblies.



**Certificazioni:
uno standard
qualitativo**
Certification:
a quality
standard

La tecnologia avanzata svolge un ruolo chiave nell'obiettivo di incrementare il proprio valore, quello dei propri prodotti, dei servizi e della capacità del personale, operando nel rispetto delle norme UNI EN ISO 9001:2008 e ISO 14001:2004. L'alto livello di sensibilità verso il rispetto delle regole di sicurezza e dell'ambiente è presente ed immediatamente percepito in tutte le strutture aziendali.

Advanced technology plays a key role aiming to increase its value and the products, services and staff capacity value, operating in compliance with UNI EN ISO 9001:2008 and ISO 14001:2004.

The high level of sensitivity towards the observance of safety rules and the environment is present and perceived immediately in all facilities.



UNI EN ISO 9001:2008 - Cert. n° 0141



UNI EN ISO 14001:2004 - Cert. n° 0270A

Our partners:

AUSTRALIA

MODERN TOOLS (VIC.) PTY LTD
2/2 Newcastle Rd
Bayswater, Australia, VIC 3153
Phone: +61 03 9761 2929

BENELUX

BUCCI INDUSTRIES BENELUX
Alée Verte 12, B-5150 Floreffe (Belgium)
Phone: +32 496 10 10 90

BRASIL

BUCCI INDUSTRIES BRASIL
R. Dr. Augusto De Miranda, 910
Vila Pompeia, São Paulo,
Brasile, SP, 05026-000
Phone: +55 19 3515 7220

BULGARIA

RAIS LTD
Пловдив, Бул. Освобождение 3, Ет. 3,
Plovdiv, Bulgaria, 4019
Phone: +359 34444255

CHINA

**SHANGHAI LUOTUO
AUTOMATION TECHNOLOGY CO**
NORTH GUYANG ROAD,
SONGJIANG DISTRICT
SHANGHAI, Cina, 201620
Phone: +86 2164120150

CZECH REPUBLIC

MACH TRADE S.R.O.
Radiová 1431/2a
Praha, Repubblica Ceca, 102 00
Phone: +420 603293270

FRANCE

BUCCI INDUSTRIES FRANCE SARL
145 Rue Louis Armand
Cluses, Francia, 74300
Phone: +32 81450282

GERMANY

ITAL TECH SERVICE GMBH
Am Langenberg 13
Ingelheim Am Rhein, Germania, 55218
Phone: +49 1752955353

BUCCI INDUSTRIES DEUTSCHLAND

Stammheimer Str, 10
D-70806 Kornwestheim - Germany
Phone: +49 7154 8370 700

INDIA

DWIJ CONSULTANTS
25, Payal Park Part-1, Satellite Road
Gujarat , India, 380015
Phone: +91 7926760747

JAPAN

BUCCI INDUSTRIES JAPAN-IGM NIPPON
Kamoi, 6-10-1 Midori-Ku, 226-0003
Yokohama-Shi Kanagawa
Phone: +81 45 931 5096

NEW ZELAND

SCOTT MACHINERY LIMITED
51 Gilberthorpes Rd, Hei Hei
Christchurch, Nuova Zelanda, 8441
Phone: +64 3-349 2266

POLAND

Narzędzia Skrawające TOOLS Sp. z o.o.
Ul. Władysława Grabskiego 25,
Siechnice, Polonia, 55-011
Phone: +48 713435858

RUSSIA

SOLVER ENGINEERING LLC
43 STANKEVICH STR
VORONEZH, Russia, 394006
Phone: +7 4732777222

SPAIN

DAISA TECHNOLOGIC, S.L.
Urdaneta Bidea, 13
Zarautz, Gipuzkoa, Spagna, 20800
Phone: +34 943133739

SWEDEN

LICHRON AB
Norregårdsvägen 17
Skövde, Svezia, 541 34
Phone: +46 500445050

SWITZERLAND

BUCCI INDUSTRIES SWISS SA
Route Du Granval 3
Belprahon, Svizzera, 2744
Phone: +41 324934054

TAIWAN

MONGTEC PRECISION INC
No.156, FUTAIN 3Rd ST
TAICHUNG CITY, Taiwan, 40241
Phone: +886 422653360

TURKEY

**SELEN MAKINE VE TEKNOLOJI
HIZ.SAN.TIC.LTD.STI**
İbrahim Ağa Cd. No:255
Gebze/Kocaeli, Turchia, 41400
Phone: +90 2626413208

UNITED KINGDOM

YMT LTD
Tuscan House George Smith Way
Lufton, Yeovil , Regno Unito, BA22 8QR
Phone: +44 1935 428375

TDT TECHNOLOGY LTD

Unit 20/Woodside Park
Rugby, Regno Unito, CV21 2NP
Phone: +44 1788570411

UNITED STATES

BUCCI INDUSTRIES USA, INC.
9332 Forsyth Park Dr
Charlotte, Stati Uniti, NC 28273
Phone: +1 7045838341



ALGRA S.p.A. Divisione accessori
Via Manzoni, 41 24031 Almenno S. Salvatore (BG)
Tel. +39 035.64.20.51 • Fax +39 035.64.01.28
algra.accessori@algra.it - www.algra.it