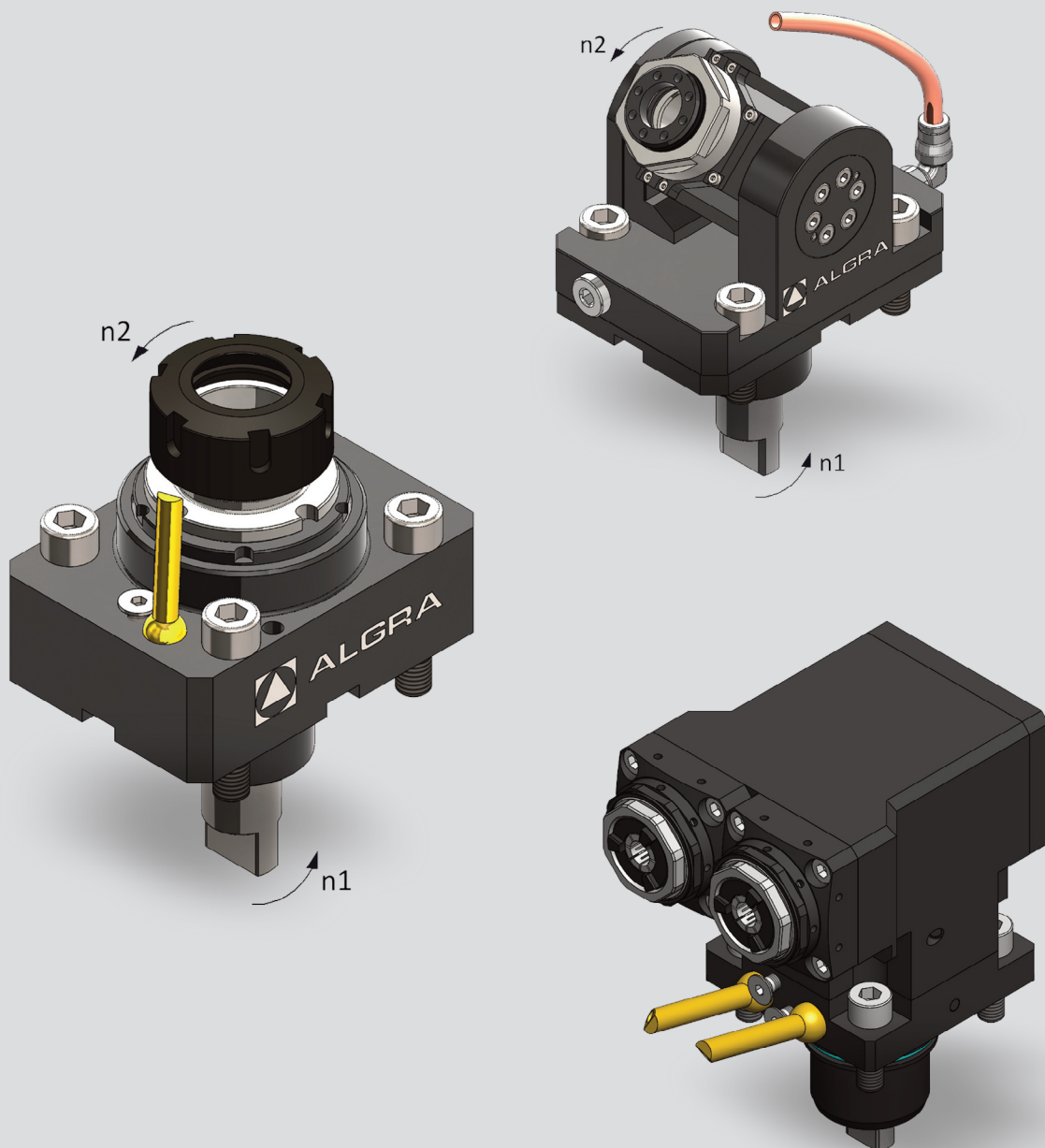


Biglia

B436, B438

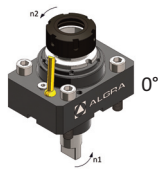

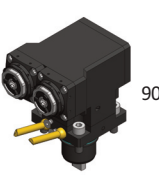
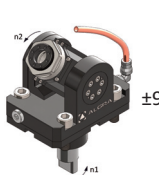
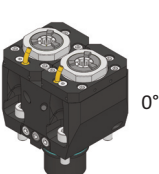
Toolholder Program

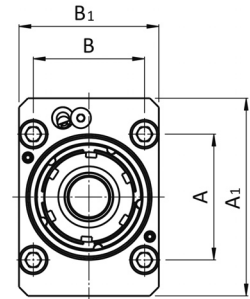
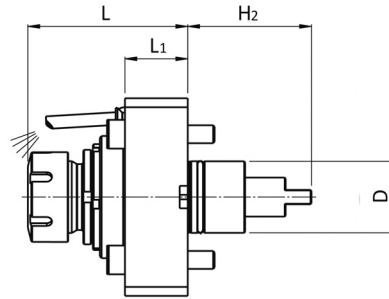
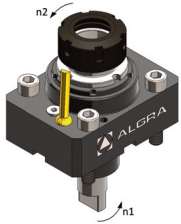
B40






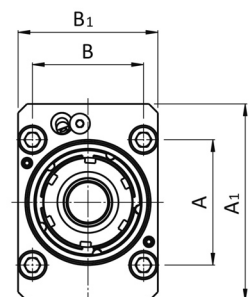
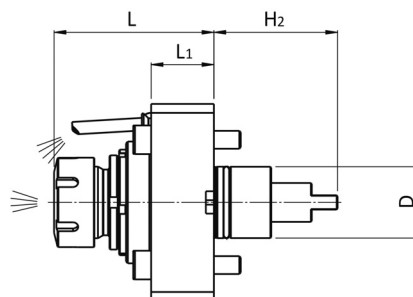
 Biglia






 B436, B438

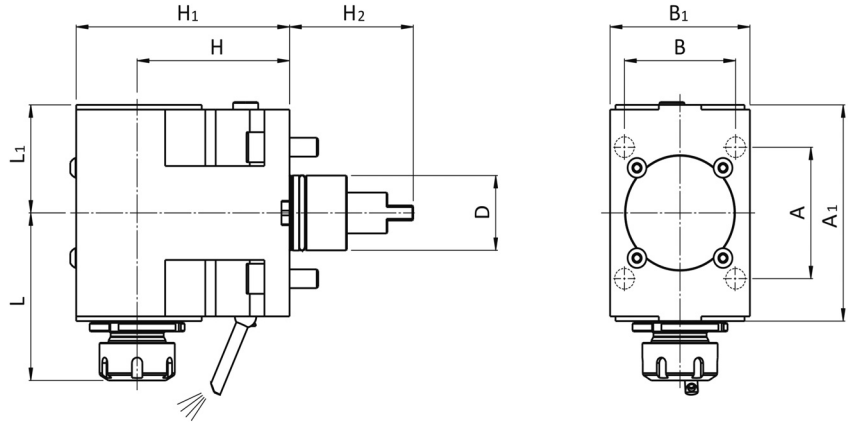
B40	Version Clamping	Tools Height	Center speed	Max.	Ratio	External Coolant	Biglia code	Internal Coolant	Biglia code	Page
	0°	ER20 - DIN6499		8000rpm	i=1:1	RAPPS 20 121UB40	T134-00128 (AMB402)	RAPPS 20 131UB40	T134-00149 (AMB402-A)	5
	90°	ER20 - DIN6499 ER20 - DIN6499	45mm 70mm	8000rpm 8000rpm	i=1:1 i=1:1	RRPPS 20 121UB40 RRPPS 20 321UB40	T134-00145 T134-00129 (AMB401)	RRPPS 20 131UB40 RRPPS 20 331UB40	T134-000151 T134-00150 (AMB401-A)	9
	90° Double Y	ER20 - DIN6499	70mm	8000rpm	i=1:1	RRPPY 16 321UB40	AMB404			5
	±90°	ER16 - DIN6499		8000rpm	i=1:1	ROPPS 11 121UB40	T134-00130	ROPPS 11 131UB40		5
	0°	RT20 - DIN6499		6000rpm	i=1:1	RAPPTY20 121UB40/44	AMB405			7






1/B40			Codice	D	ER	H	H1	H2	H3	L	L1	L2	A	B	A1	B1	A2	B2	M ₂	n ₂	P
			code - code - Bestell Nr.							(min-max)									Nm	min-1	kW
			RAPPS 20 121UB40	40	20			58		52,5	38		50	50	70	70			26	8000	
0°																					
	DIN 6499	±1 (1:1)																			
																					
EXTERNAL																					

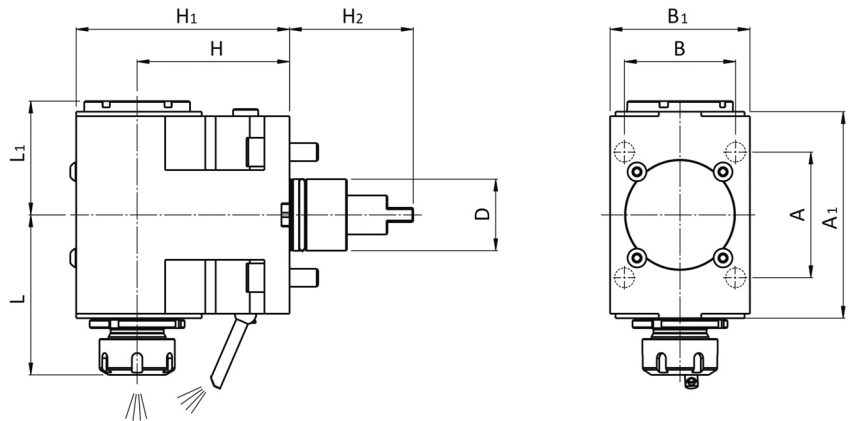







2/B40			Codice	D	ER	H	H1	H2	H3	L	L1	L2	A	B	A1	B1	A2	B2	M ₂	n ₂	P
			code - code - Bestell Nr.							(min-max)									Nm	min-1	kW
			RAPPS 20 131UB40	40	20			58		52,5	38		50	50	70	70			26	8000	
0°																					
	DIN 6499	±1 (1:1)																			
																					
INT./EXT.	100 bar	Filtration 30µm																			

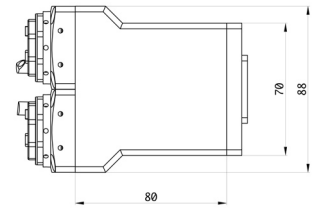
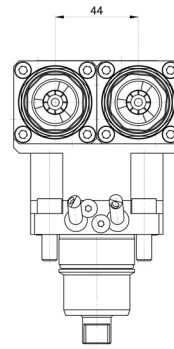
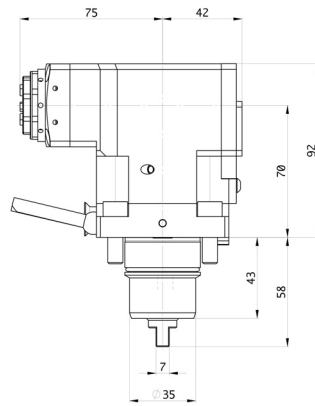
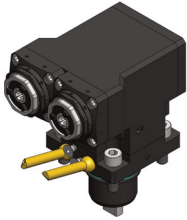






3/B40			Codice	D	ER	H	H1	H2	H3	L	L1	L2	A	B	A1	B1	A2	B2	M ₂	n ₂	P
			code - code - Bestell Nr.							(min-max)									Nm	min-1	kW
90°			RRPPS 20 121UB40	40	20	70	95,5	58		74,5	50		50	50	109	70			26	8000	
			RRPPS 20 321UB40	40	20	100	125,5	58		74,5	50				50	50	70	70			26
																					

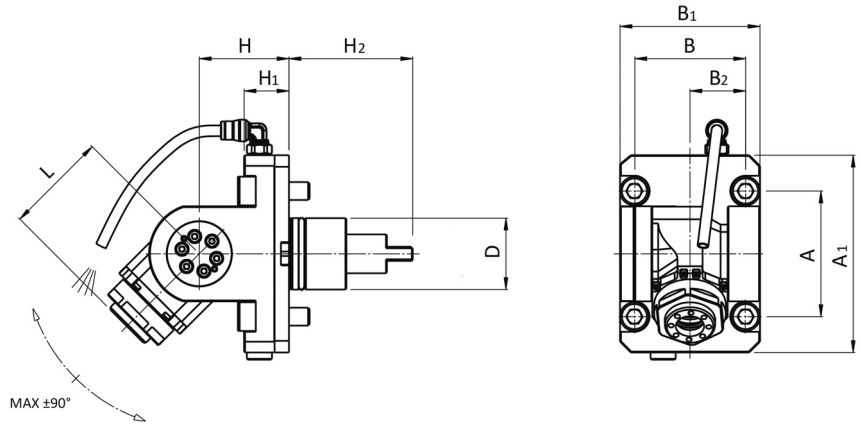
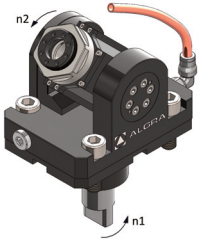
4



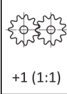



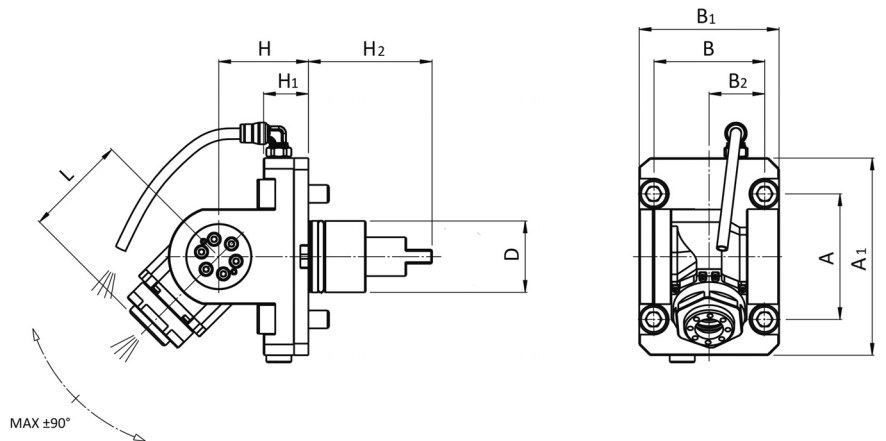
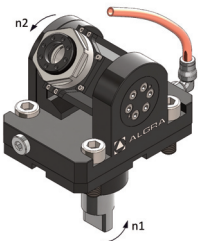
4/B40			Codice	D	ER	H	H1	H2	H3	L	L1	L2	A	B	A1	B1	A2	B2	M ₂	n ₂	P
			code - code - Bestell Nr.							(min-max)									Nm	min-1	kW
90°			RRPPS 20 131UB40	40	20	70	95,5	58		74,5	53		50	50	109	70			26	8000	
			RRPPS 20 331UB40	40	20	100	125,5	58		74,5	53				50	50	70	70			26
																					
																					
																					

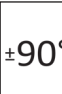

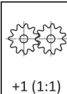
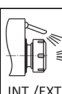




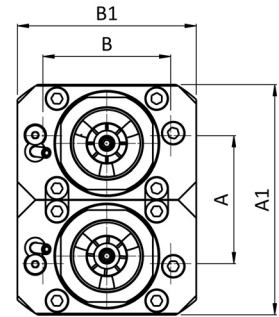
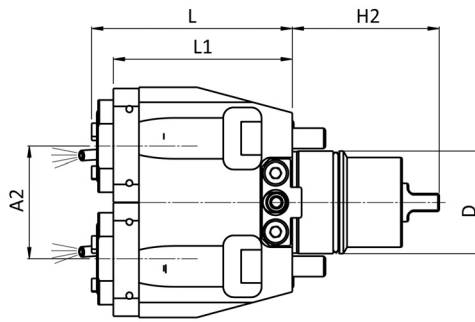
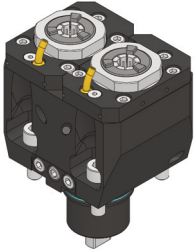
5/B40		Codice	D	ER	H	H1	H2	H3	L	L1	L2	A	B	C	A1	B1	A2	M ₂	n ₂	P
		code - code - Bestell Nr.							(min-max)									Nm	min-1	kW
   DIN 6499 ±1 (1:1)		RRPPY 16 321UB40	40	16	70	92	58		75	42		50	50	22	104	88		8	6000	
 EXTERNAL																				






6/B40			Codice	D	ER	H	H1	H2	H3	L	L1	L2	A	B	A1	B1	A2	B2	M ₂	n ₂	P	
			code - code - Bestell Nr.							(min-max)									Nm	min-1	k	
  			ROPSS 11 121UB40	40	11	36	58			40			50	50	70	70	25	8	6000			
																						



7/B40			Codice	D	ER	H	H1	H2	H3	L	L1	L2	A	B	A1	B1	A2	B2	M ₂	n ₂	P	
			code - code - Bestell Nr.							(min-max)									Nm	min-1	kW	
  			ROPSS 11 131UB40	40	11	36	58			40			50	50	70	70	25	8	6000			
  																						



8/B40			Codice	D	ER	H	H1	H2	H3	L	L1	L2	A	B	A1	B1	A2	B2	M ₂	n ₂	P
			code - code - Bestell Nr.							(min-max)									Nm	min-1	k
0°			RAPPTY20 121UB40/44	40	20			58		78,5			50	50	90	70			10	6000	
 EXTERNAL																					

Our partners:

ARGENTINA - BRAZIL - PERU BUCCI INDUSTRIES BRASIL (IGM DO BRASIL)

Avenida Dos Pinheiros 465,
13280-000 - Vinhedo SP (Brasil)
Phone: +55 19 3515 7220

AUSTRALIA

MODERN TOOLS (VIC.) PTY LTD

Factory 2/2 Newcastle Road,
3153 - Bayswater Vic.
Phone: +61 03 9761 2929

BELGIUM - NETHERLANDS - LIE- CHTENSTEIN - LUXEMBURG

BUCCI INDUSTRIES BENELUX

Allée Verte 12, B-5150 Floreffe (Belgium)
Phone: +32 496 10 10 90

BULGARIA

RAIS LTD

58, Dimcho Debelianov Str., 4400 -
Pazardjik (Bulgaria)
Phone: +359 34444255

CANADA - MEXICO - USA

BUCCI INDUSTRIES USA, INC

9332 Forsyth Park Dr, Charlotte, NC
28273 (USA)
Phone: +1 7045838341

CHINA

SHANGHAI LUOTUO

AUTOMATION TECHNOLOGY CO.

2f, Building 122, Lane 255,
South Sizhuan RD, Xinqiao Town,
Songjiang District Shanghai
201612 (China)
Phone: +86 2164120150

CZECH REPUBLIC

MACH TRADE S.R.O.

Podnikatelská 565, Běchovice,
190 11 Praha 9 (Czech Republic)
Phone: +420 603293270

FRANCE - ALGERIA - MOROCCO

TUNISIA - COTE D'IVOIRE

BUCCI INDUSTRIES FRANCE SARL

145 Rue Louis Armand Zi Des Grands
Pres, 74300 - Cluses (France)
Phone: +33 450896957

GERMANY - AUSTRIA

BUCCI INDUSTRIES DEUTSCHLAND GMBH

Stammheimer Str. 10,
70806 Kornwestheim (Germany)
Phone: +49 7154 8370 700

INDIA - AZERBAIJAN - BANGLADESH

BAHRAIN - IRAN - KASACHSTAN - KUWAIT - SAUDI ARABIA - SRI LANKA DWIJ CONSULTANTS

25 Payal Park, Opp. Sundervan, Satellite
Rd , 380 015 - Ahmedabad (India)
Phone: +91 7926760747

IRELAND

LISTER MACHINE TOOL LIMITED

PO Box 838, Bluebell Industrial Estate,,
Dublin (Ireland)
Phone: +39 035 643131

JAPAN

BUCCI INDUSTRIES JAPAN-IGM NIPPON

Kamoi, 6-10-1 Midori-Ku, 226-0003
Yokohama-Shi Kanagawa (Japan)
Phone: +81 45 931 5096

NEW ZELAND

SCOTT MACHINERY LIMITED

51 Gilberthorpes Rd,
Po Box 16213 Hornby, 8441
Christchurch (New Zealand)
Phone: +64 33492266

POLAND

NARZĘDZIA SKRAWAJĄCE TOOLS SP. Z O.O.

ul. Władysława Grabskiego 25,,
Siechnice, 55-011 (Poland)
Phone: +48 713435858

RUSSIA - BELARUS

SOLVER ENGINEERING LLC

43 Stankevicha Str, 394006 - Voronezh
(Russia)
Phone: +7 4732777222

SPAIN

DAISA TECHNOLOGIC, S.L.

Urdaneta Bidea 13 P.I.Abendano Local n 4,
20800 - Zarautz Gipuzkoa (España)
Phone: +34 943133739

SOUTH KOREA

LINKONEER

427, Dusan Best tel 37, Sangnam-ro,
Seongsan-gu, 51505, Gyeongsangnam-do
(South Korea)
Phone: +82 10 4184 1456

SWEDEN - DENMARK - FINLAND - NORWAY - ESTONIA - LATVIA

LITHUANIA

BUCCI INDUSTRIES NORDIC AB

Metallgatan 4 441 32 Alingsås (Sweden)
Phone: +46 322 66 87 20

SWITZERLAND

BUCCI INDUSTRIES SWISS SA

Route Du Grandval 3, CH-2744
Belprahon (Switzerland)
Phone: +41 324934054

TAIWAN - INDONESIA - VIETNAM -

MALAYSIA - THAILAND - SINGAPORE - PHILIPPINES

MONGTEC PRECISION INC.

2f, No.156, Futain 3rd St., South Dist.,
40241 - Taichung City (Taiwan)
Phone: +886 422653360

TURKEY

SELEN MAKINE VE TEKNOLOJI

HIZ.SAN.TIC.LTD.STI

Gaziler Mah. Ibrahimaga Cad no:255/b,
Gebze/Kocaeli (Turkey)
Phone: +90 2626413208

UNITED KINGDOM

YMT LTD

Tuscan House, G. Smith Way, Lufton
Tr.Est., BA22 8GR - Yeovil Somerset
(England)
Phone: +44 1935 428375



ALGRA S.p.A. Divisione accessori
Via Manzoni, 41 24031 Almenno S. Salvatore (BG)
Tel. +39 035.64.20.51 • Fax +39 035.64.01.28
algra.accessori@algra.it - www.algra.it