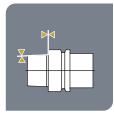
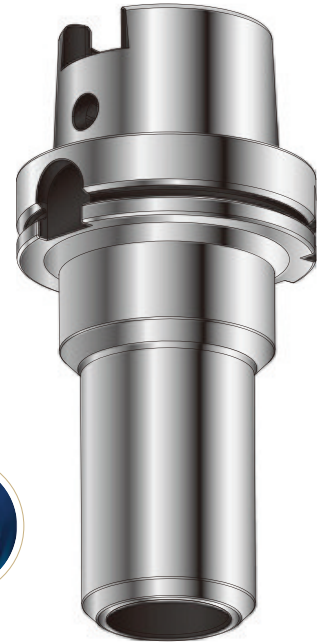
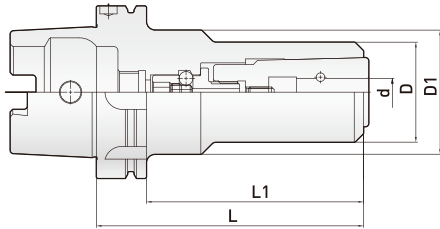


UC PIN COLLET CHUCK (UC25) High Vibration Damping Type

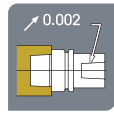
UC 安卡夾頭 (UC25) 高阻尼減震型



Dual face contact
兩面接觸



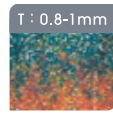
Surface roughness
表面粗度



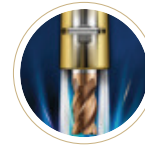
Run out accuracy
內孔偏擺度



Surface hardness
表面硬度



Carbonized depth
滲碳深度



Order Code 訂購編號	Range(d) 夾持範圍	L	L1	D	D1	Min ¹ G2.5 動態平衡	Spanner 扳手規格	Recommended Torsion 推薦鎖固扭力	Torque Wrench 扭力扳手
HSK100A-UC25-160	12-25	160	136	58	72	20,000	M10	25Nm	TW30+M10100

- The collet designed with PIN, 100% never tool pull out.
- Must be used R groove tool or standard specifications DIN 6535 HB for side lock tool.
- Must to choose the Pin collet, please check p.21

- 有PIN的夾頭設計，100%不掉刀。
- 必須使用R型溝槽刀具或標準規範DIN 6535 HB的側固刀具。
- 必須選用有PIN的筒夾，請參閱 p.21

