



testa ad angolo - angle head

TA16.CP

caratteristiche/features



ø 16



M12



1-1



4000

peso/weight



5 kg



7,5 kg

rotazione/rotation

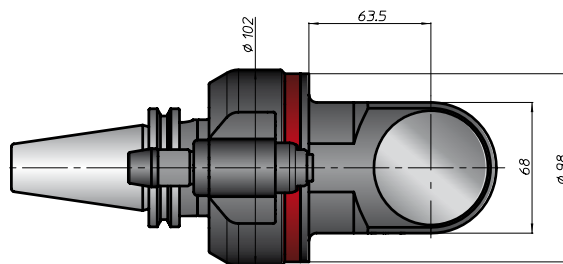
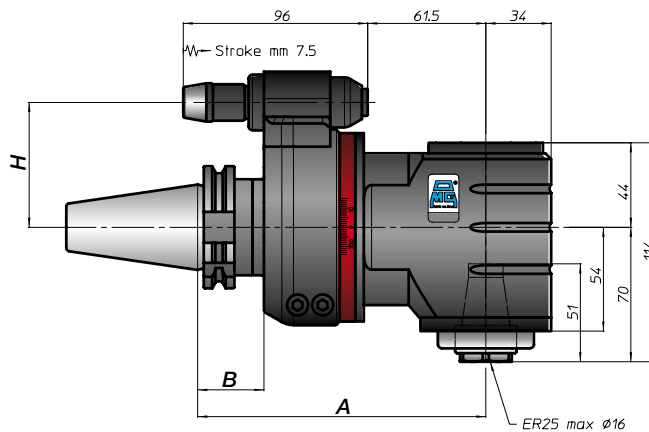
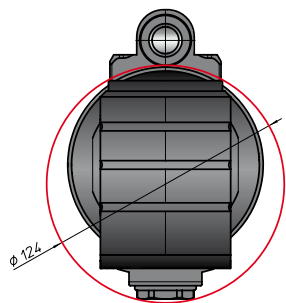
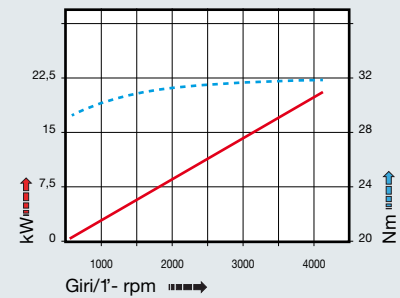


input



output

prestazioni/performance



CONO SHANK	size	H			
		A	B	standard	optional
DIN9871	-			65	-
	40			80	-
	45			80	-
ANSI B5.50	50	150	35	65	-
	40			80	-
	50			80	-
BT	40			65	-
	50	158	45	80	-
HSK	63		44	65	-
	80	159		80	-
	100		46	80	-
CAPTO	-				
	-				
KM	-				
	-				
	-				
DIN2080	-				
	-				
	-				
NMTB	-				
	-				