

# TA13.CPL

caratteristiche/features



ø 13



M10



1-1



6000

peso/weight



5,7 kg



8 kg

rotazione/rotation

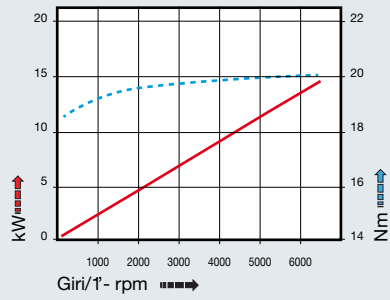


input

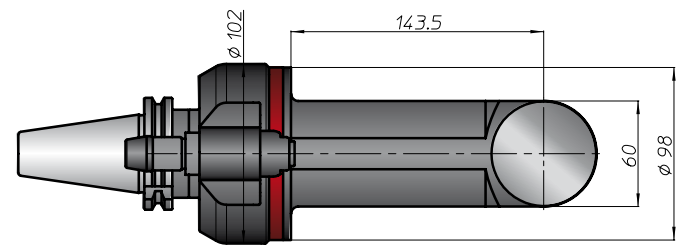
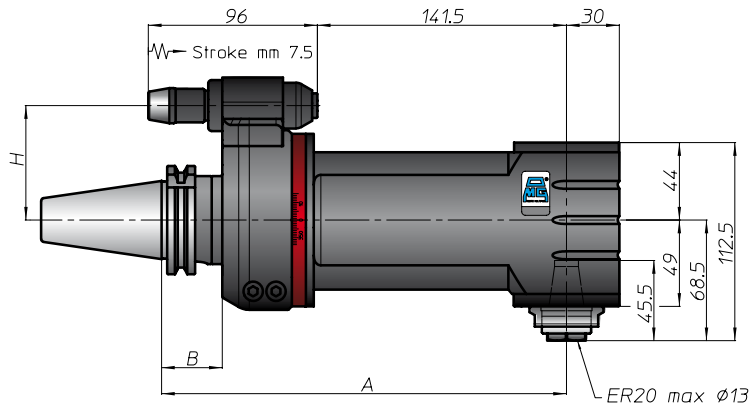
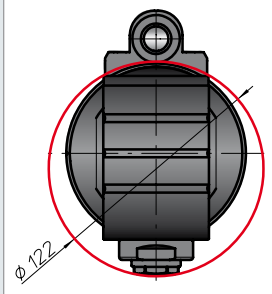


output

prestazioni/performance



| CONO SHANK | size | A   | B  | H        |          |
|------------|------|-----|----|----------|----------|
|            |      |     |    | standard | optional |
| DIN69871   | 30   | 230 | 35 | 65       | -        |
|            | 40   |     |    | 80       | -        |
|            | 45   |     |    | 80       | -        |
|            | 50   |     |    | 80       | -        |
| ANSIB5.50  | 40   | 239 | 46 | 65       | -        |
|            | 50   |     |    | 80       | -        |
| BT         | 40   | 238 | 45 | 65       | -        |
|            | 50   |     |    | 80       | -        |
| HSK        | 63   | 239 | 46 | 65       | -        |
|            | 80   |     |    | 80       | -        |
|            | 100  |     |    | 80       | -        |
| CAPTO      | -    | 239 | 46 | -        | -        |
|            | -    |     |    | -        | -        |
|            | -    |     |    | -        | -        |
| KM         | -    | 239 | 46 | -        | -        |
|            | -    |     |    | -        | -        |
|            | -    |     |    | -        | -        |
| DIN2080    | -    | 239 | 46 | -        | -        |
|            | -    |     |    | -        | -        |
|            | -    |     |    | -        | -        |
| ANSIB5.18  | -    | 239 | 46 | -        | -        |
|            | -    |     |    | -        | -        |



BAH  
TA-CP  
TA  
MO  
HT  
VH  
TSI/TSX  
T  
MT-TC-TC3  
Accessori  
Accessories  
Appendice tecnica  
Technical supplement

