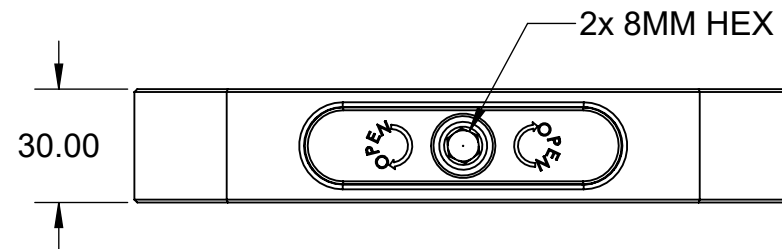
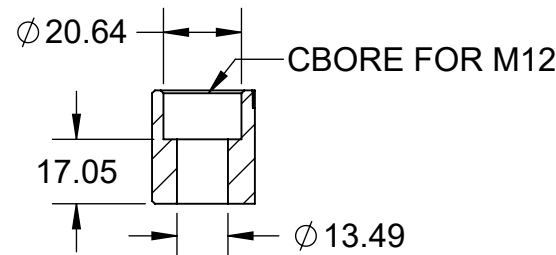
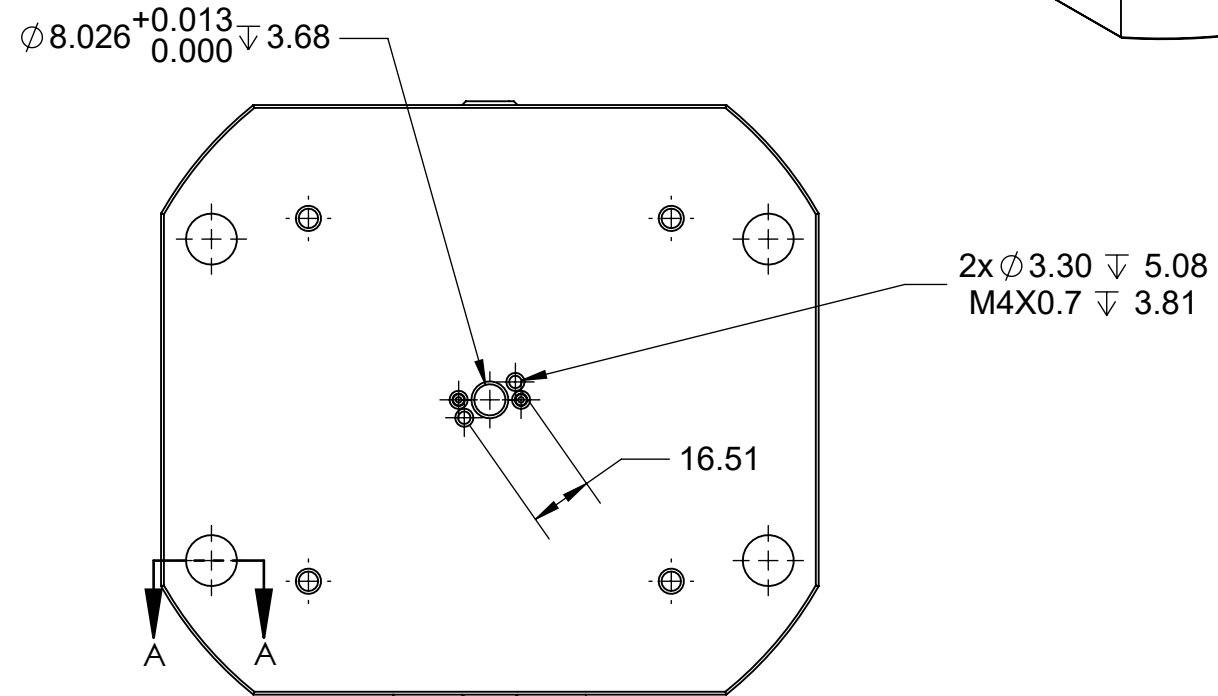
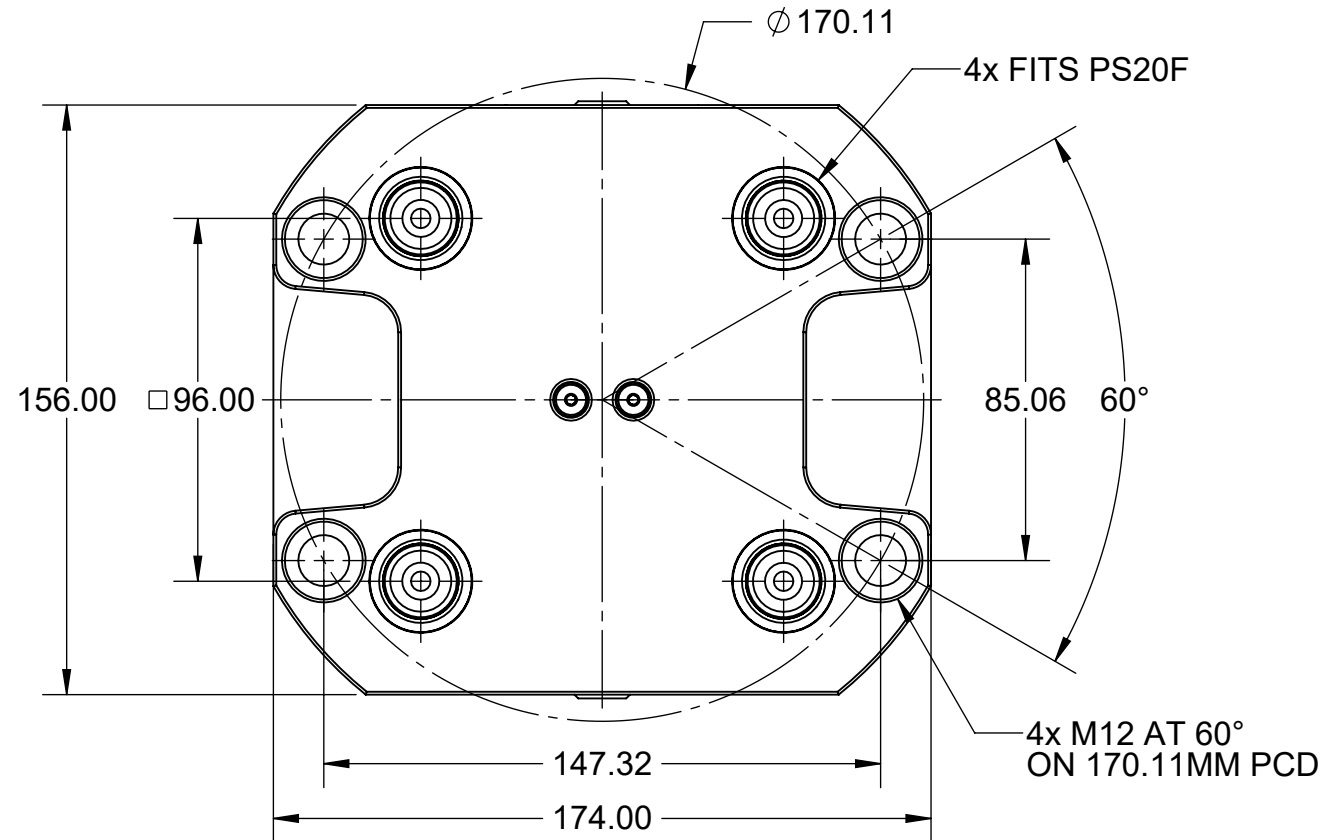
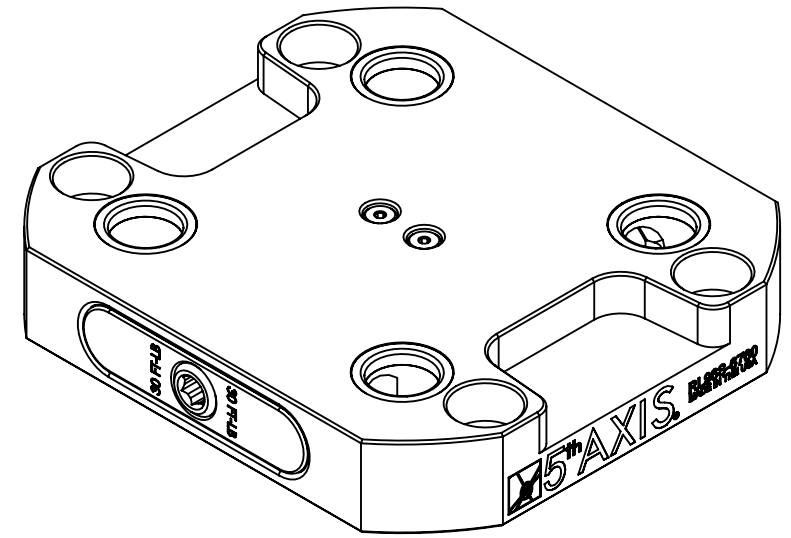

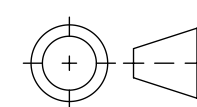


MATERIAL:
 RL96A-6760: 6061 ALUMINUM BODY
 RL96S-6760: 1018 STEEL BODY

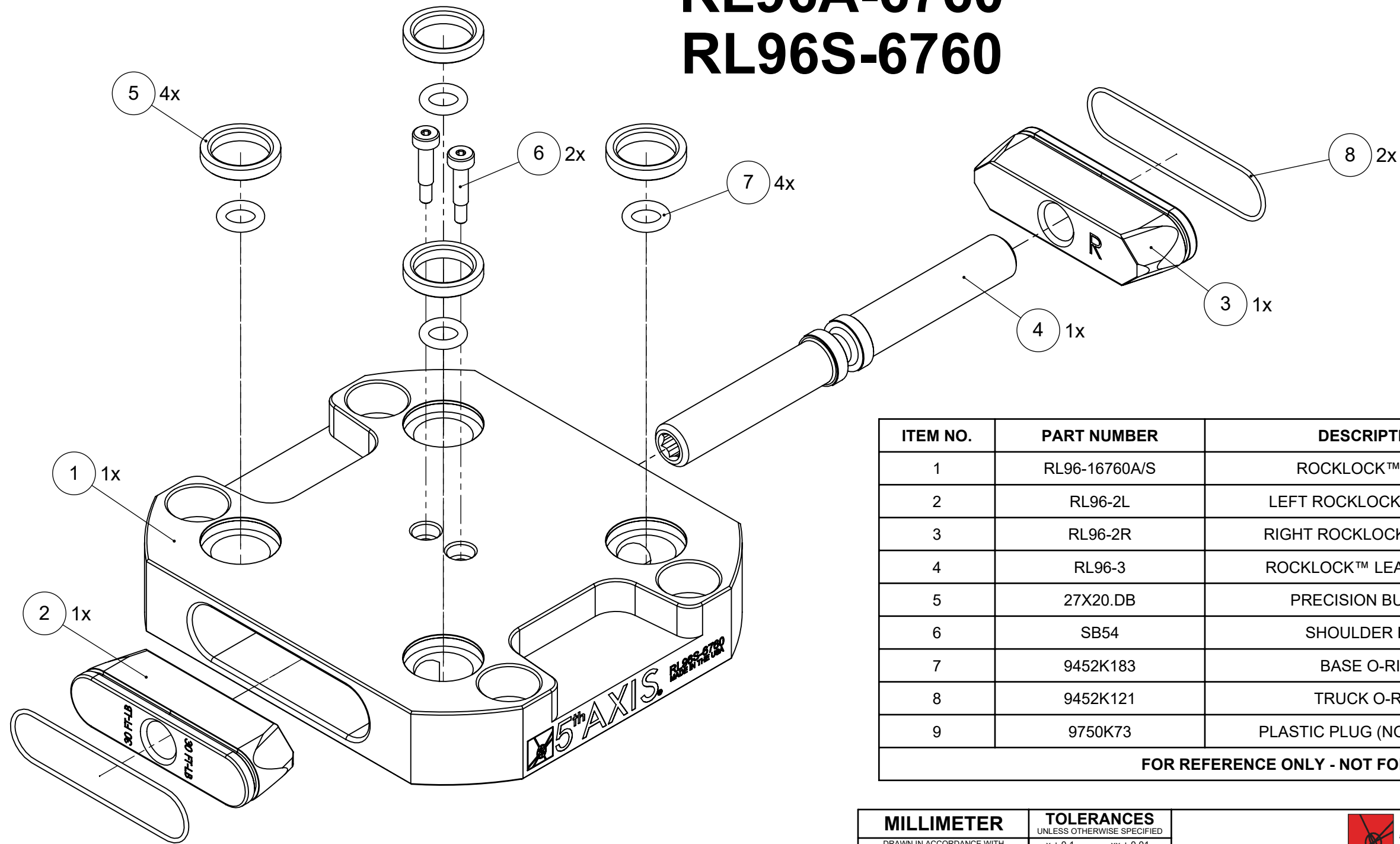
RL96A-6760 RL96S-6760



MILLIMETER		TOLERANCES UNLESS OTHERWISE SPECIFIED		 ROCKLOCK™ 96MM LOW-PROFILE BASE	
DRAWN IN ACCORDANCE WITH ASME Y14.5-2009		x ± 0.1 .xx ± 0.01 .x ± 0.05 .xxx ± 0.005 ANGULAR ± 0.5° THIRD ANGLE PROJECTION			
WWW.5THAXIS.COM		THIRD ANGLE PROJECTION		DESCRIPTION	
7140 ENGINEER ROAD SAN DIEGO, CA 92111				SIZE PART NO.	
P (858) 505-0432 F (858) 505-9344				B RL96A-6760 / RL96A-6760 REV A	
				DO NOT SCALE DRAWING SCALE 1:2 WEIGHT: SHEET 1 OF 2	

MATERIAL:
RL96A-6760: 6061 ALUMINUM BODY
RL96S-6760: 1018 STEEL BODY

RL96A-6760 RL96S-6760



ITEM NO.	PART NUMBER	DESCRIPTION	QTY.
1	RL96-16760A/S	ROCKLOCK™ BASE	1
2	RL96-2L	LEFT ROCKLOCK™ TRUCK	1
3	RL96-2R	RIGHT ROCKLOCK™ TRUCK	1
4	RL96-3	ROCKLOCK™ LEAD SCREW	1
5	27X20.DB	PRECISION BUSHING	4
6	SB54	SHOULDER BOLT	2
7	9452K183	BASE O-RING	4
8	9452K121	TRUCK O-RING	2
9	9750K73	PLASTIC PLUG (NOT SHOWN)	4

FOR REFERENCE ONLY - NOT FOR RESALE

MILLIMETER <small>DRAWN IN ACCORDANCE WITH ASME Y14.5-2009</small> WWW.5THAXIS.COM 7140 ENGINEER ROAD SAN DIEGO, CA 92111 P (858) 505-0432 F (858) 505-9344	TOLERANCES <small>UNLESS OTHERWISE SPECIFIED</small> x ± 0.1 .xx ± 0.01 .x ± 0.05 .xxx ± 0.005 ANGULAR ± 0.5° THIRD ANGLE PROJECTION		
		DESCRIPTION ROCKLOCK™ 96MM LOW-PROFILE BASE	
SIZE B PART NO. RL96A-6760 / RL96A-6760 REV A		DO NOT SCALE DRAWING SCALE 2:3 WEIGHT: SHEET 2 OF 2	