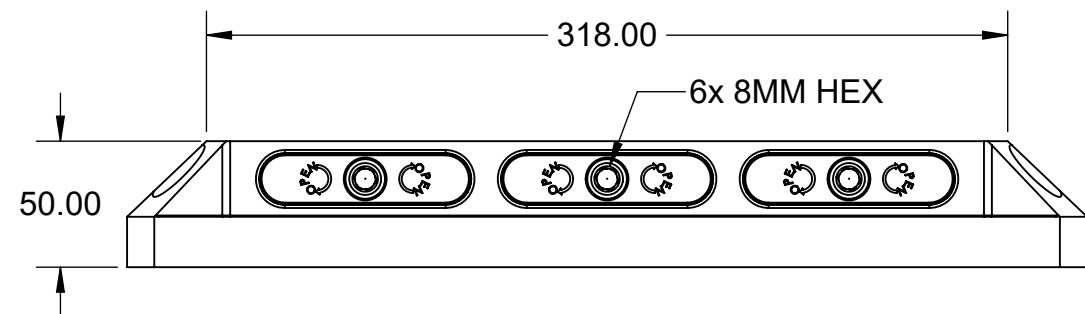
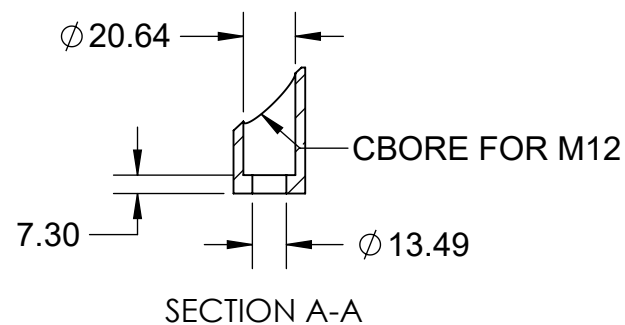
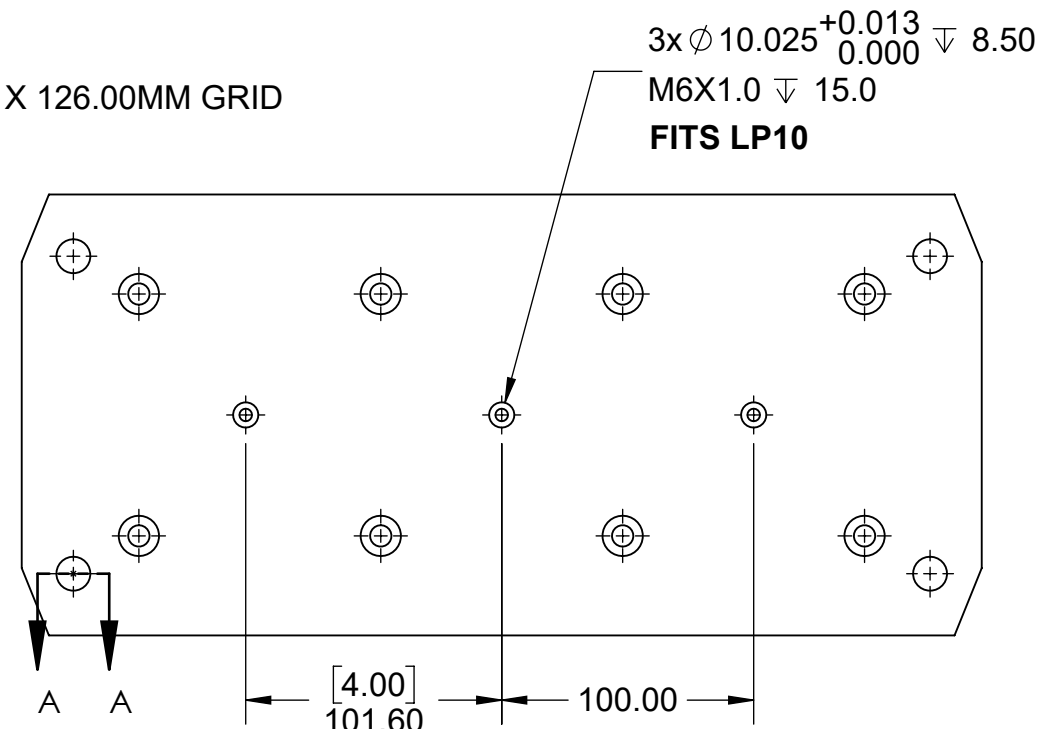
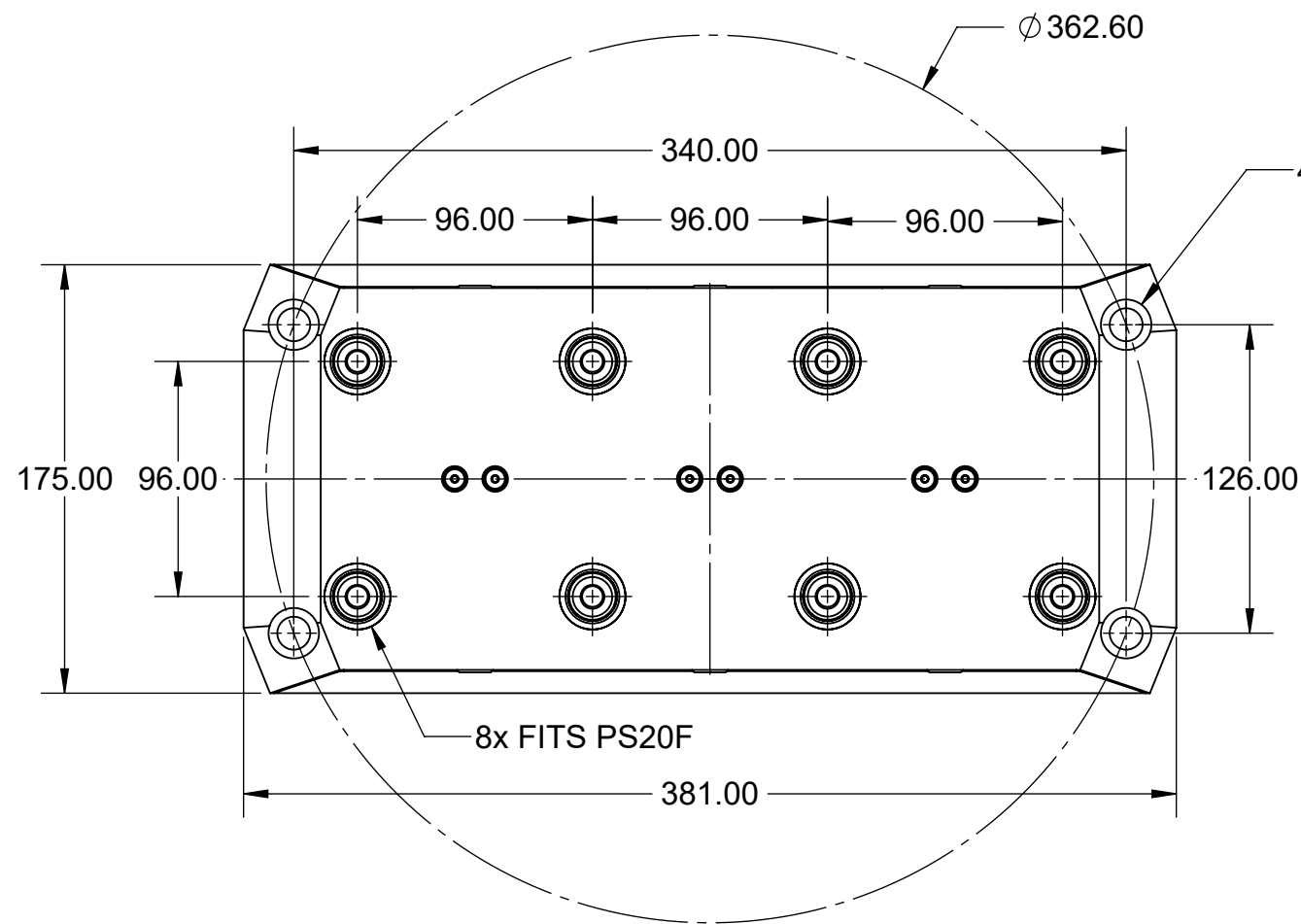
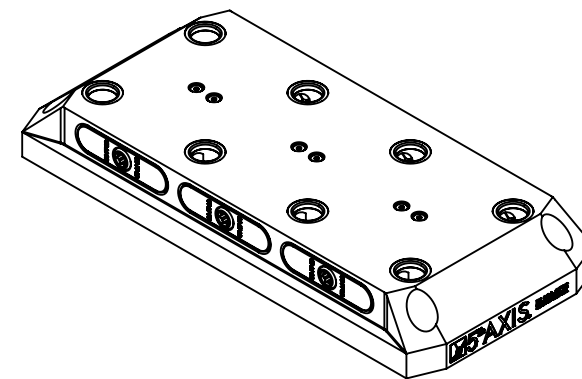



**MATERIAL:**  
**RL96A-2715: 6061 ALUMINUM BODY**

# RL96A-2715



<b>MILLIMETER</b>		<b>TOLERANCES</b> UNLESS OTHERWISE SPECIFIED			
DRAWN IN ACCORDANCE WITH ASME Y14.5-2009		x $\pm 0.1$ .xx $\pm 0.01$ .x $\pm 0.05$ .xxx $\pm 0.005$ ANGULAR $\pm 0.5^\circ$ THIRD ANGLE PROJECTION			
WWW.5THAXIS.COM		DESCRIPTION <b>ROCKLOCK™ 96MM MULTI-POSITION RISER</b>			
7140 ENGINEER ROAD SAN DIEGO, CA 92111		SIZE <b>B</b>	PART NO. <b>RL96A-2715</b>	REV <b>A</b>	
P (858) 505-0432 F (858) 505-9344		DO NOT SCALE DRAWING		SCALE 1:3	WEIGHT:
				SHEET 1 OF 2	

8

7

6

5

4

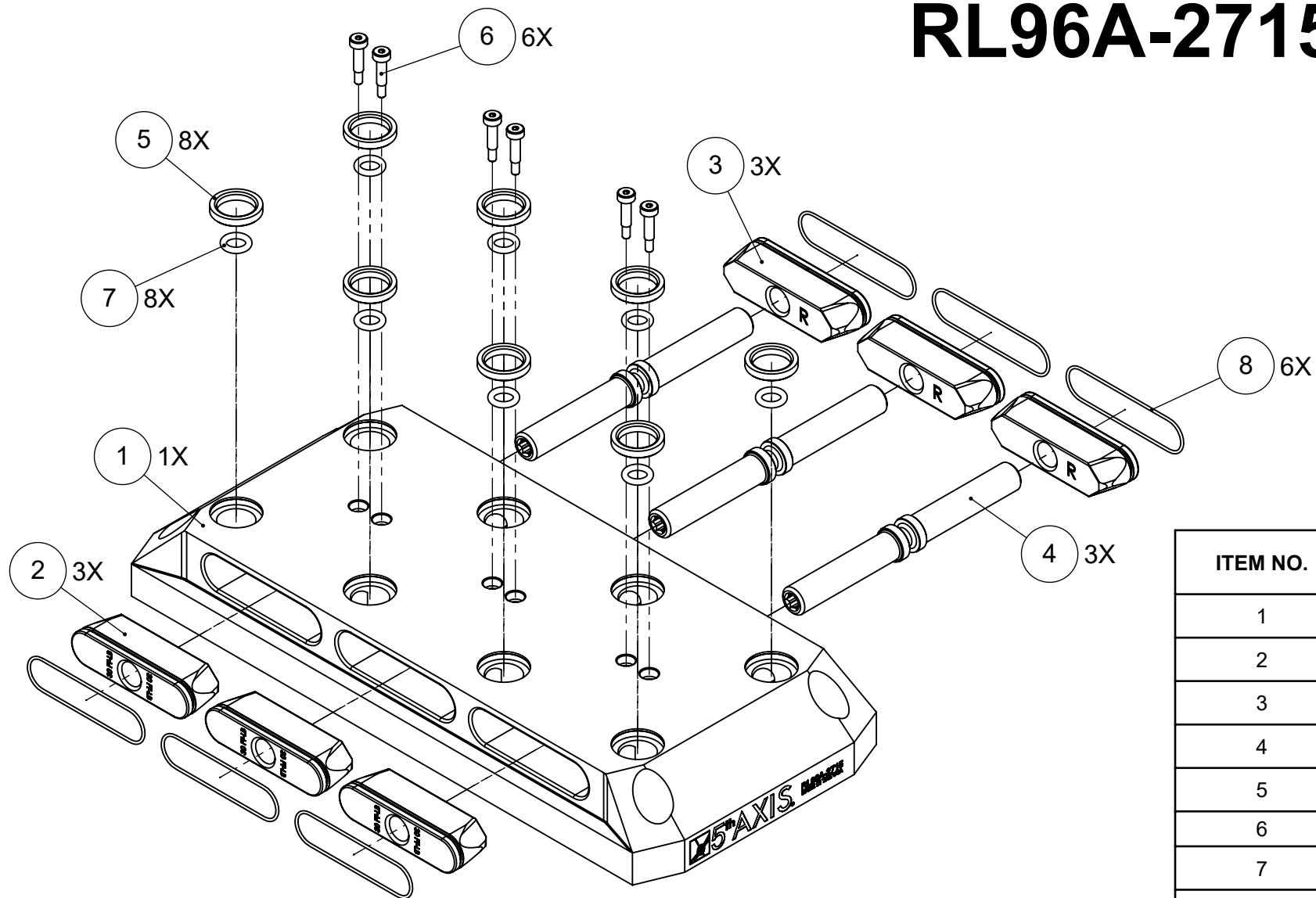
3

2

1

**MATERIAL:**  
**RL96A-2715: 6061 ALUMINUM BODY**

# RL96A-2715



ITEM NO.	PART NUMBER	DESCRIPTION	QTY.
1	RL96-12715A	ROCKLOCK™ BASE	1
2	RL96-2L	LEFT ROCKLOCK™ TRUCK	3
3	RL96-2R	RIGHT ROCKLOCK™ TRUCK	3
4	RL96-3	ROCKLOCK™ LEAD SCREW	3
5	27X20.DB	PRECISION BUSHING	8
6	SB54	SHOULDER BOLT	6
7	9452K183	BASE O-RING	8
8	9452K121	TRUCK O-RING	6
9	9750K73	PLASTIC PLUG (NOT SHOWN)	8

**FOR REFERENCE ONLY - NOT FOR RESALE**

### MILLIMETER

DRAWN IN ACCORDANCE WITH  
ASME Y14.5-2009

WWW.5THAXIS.COM

7140 ENGINEER ROAD  
SAN DIEGO, CA 92111

P (858) 505-0432  
F (858) 505-9344

### TOLERANCES

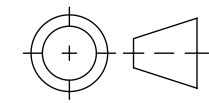
UNLESS OTHERWISE SPECIFIED

x ± 0.1    .xx ± 0.01

.x ± 0.05    .xxx ± 0.005

ANGULAR ± 0.5°

THIRD ANGLE PROJECTION



DESCRIPTION  
**ROCKLOCK™ 96MM MULTI-POSITION RISER**

SIZE **B** PART NO. **RL96A-2715** REV **A**

DO NOT SCALE DRAWING

SCALE 1:3

WEIGHT:

SHEET 2 OF 2

8

7

6

5

4

3

2

1

D

D

C

C

B

B

A

A