

8

7

6

5

4

3

2

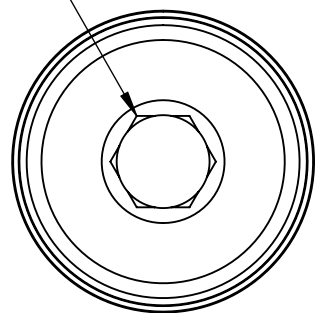
1

D

D

# PS20F

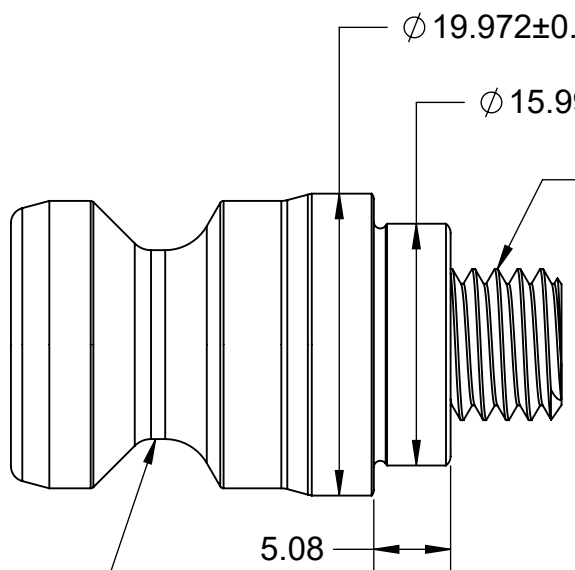
6MM HEX



$\phi 19.972 \pm 0.005$

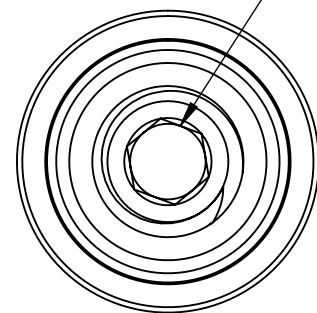
$\phi 15.992 \pm 0.005$

M10X1.5X25MM  
CUP POINT SET SCREW



5.08

5MM HEX



INTERFACES WITH  
5TH AXIS ROCKLOCK SYSTEM

IS ALSO COMPATIBLE WITH  
LANG 96MM TOP TOOLING AND  
JERGENS 96MM TOP TOOLING

C


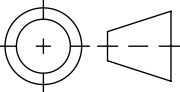
C

B

B

A

A

<b>MILLIMETER</b>		<b>TOLERANCES</b> UNLESS OTHERWISE SPECIFIED			
DRAWN IN ACCORDANCE WITH ASME Y14.5-2009		x ± 0.1    .xx ± 0.01 .x ± 0.05    .xxx ± 0.005 ANGULAR ± 0.5° THIRD ANGLE PROJECTION			
WWW.5THAXIS.COM				DESCRIPTION <b>ROCKLOCK INTERFACING PIN</b>	
7140 ENGINEER ROAD SAN DIEGO, CA 92111				SIZE <b>B</b>	PART NO. <b>PS20F</b>
P (858) 505-0432 F (858) 505-9344		DO NOT SCALE DRAWING		SCALE 2:1	WEIGHT:
				SHEET 1 OF 1	

8

7

6

5

4

3

2

1