

8

7

6

5

4

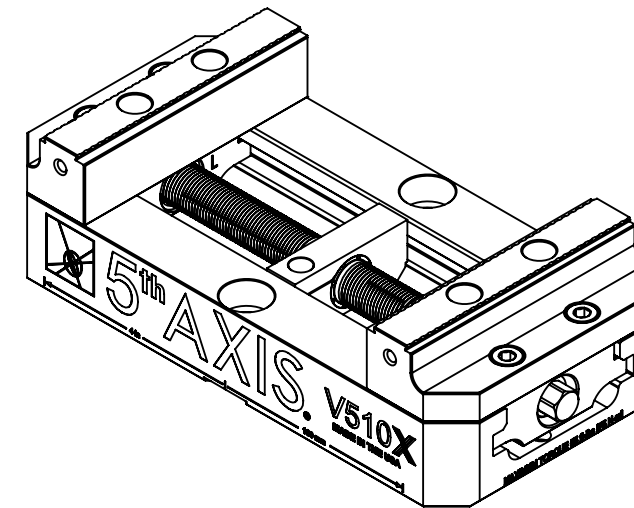
3

2

1

| TECHNICAL DATA | V510X |
|--------------------------------|--------------------|
| JAW WIDTH | 125.73mm |
| BASE LENGTH | 254.00mm |
| MAXIMUM TORQUE (JAW BOLT) | 47.45 Nm |
| CLAMPING FORCE | 25.13kN @ 74.57 Nm |
| MAXIMUM TORQUE (LEADSCREW) | 74.57 Nm |
| MAXIMUM TORQUE (MOUNTING BOLT) | 47.45 Nm |
| SELF-CENTERING ACCURACY | ± 12.7µm |

V510X



D

D

C

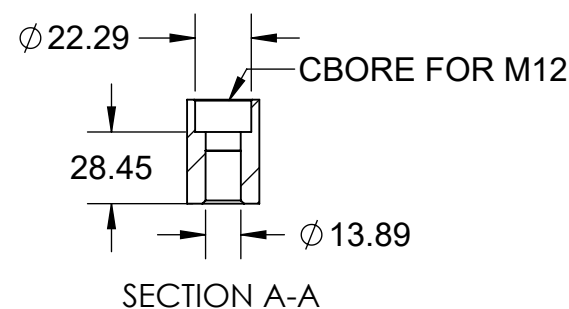
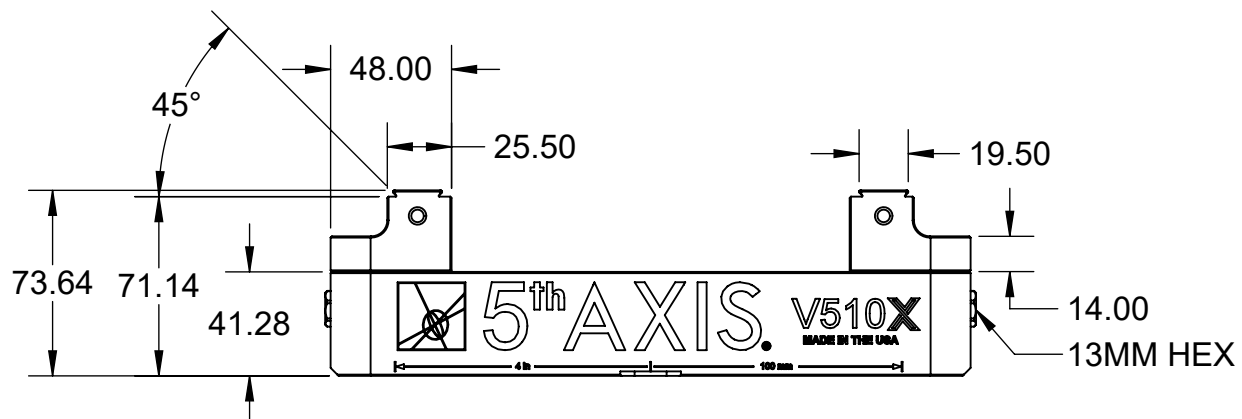
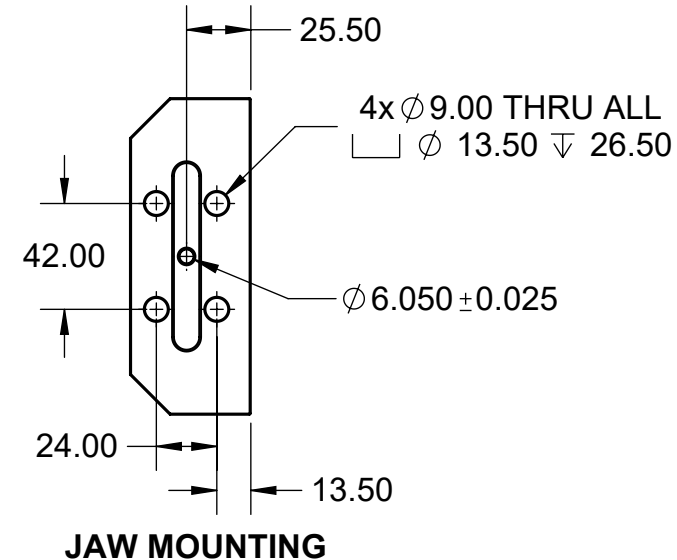
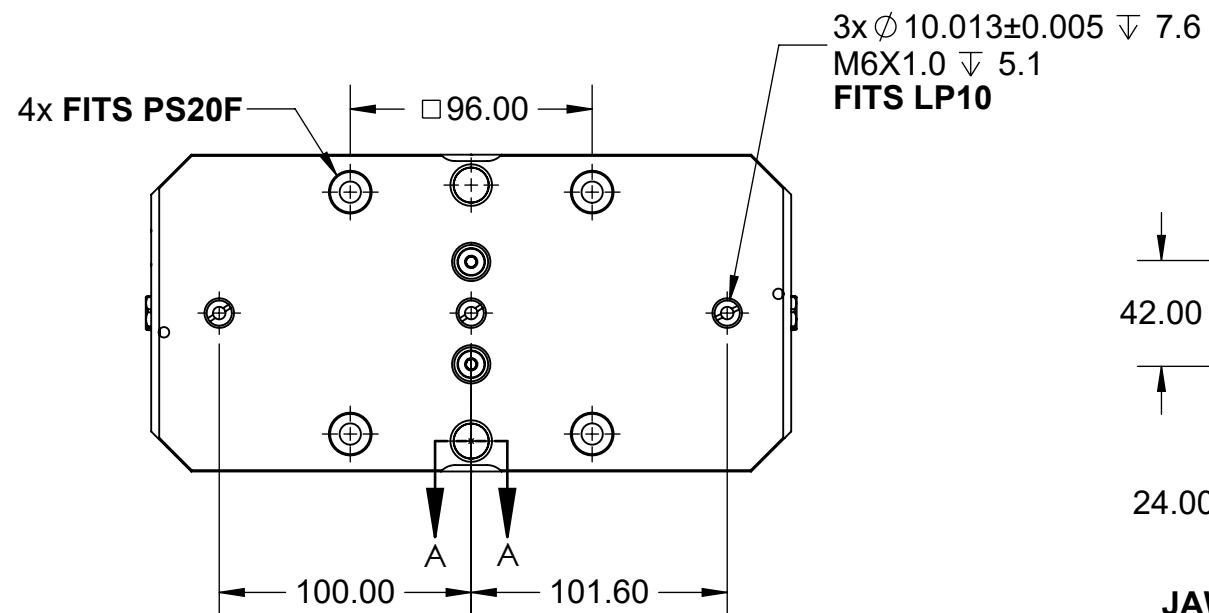
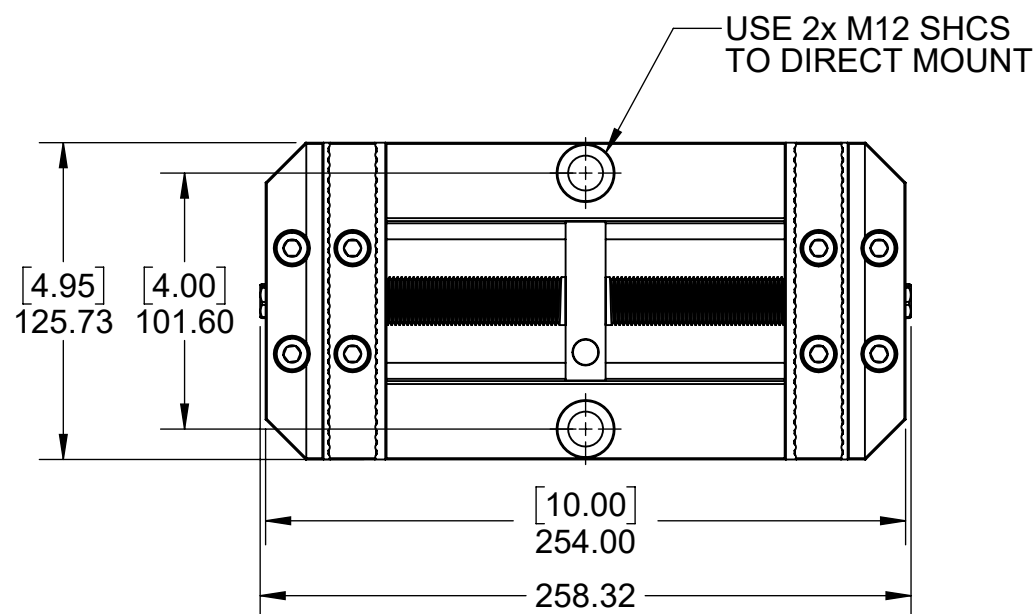
C

B

B

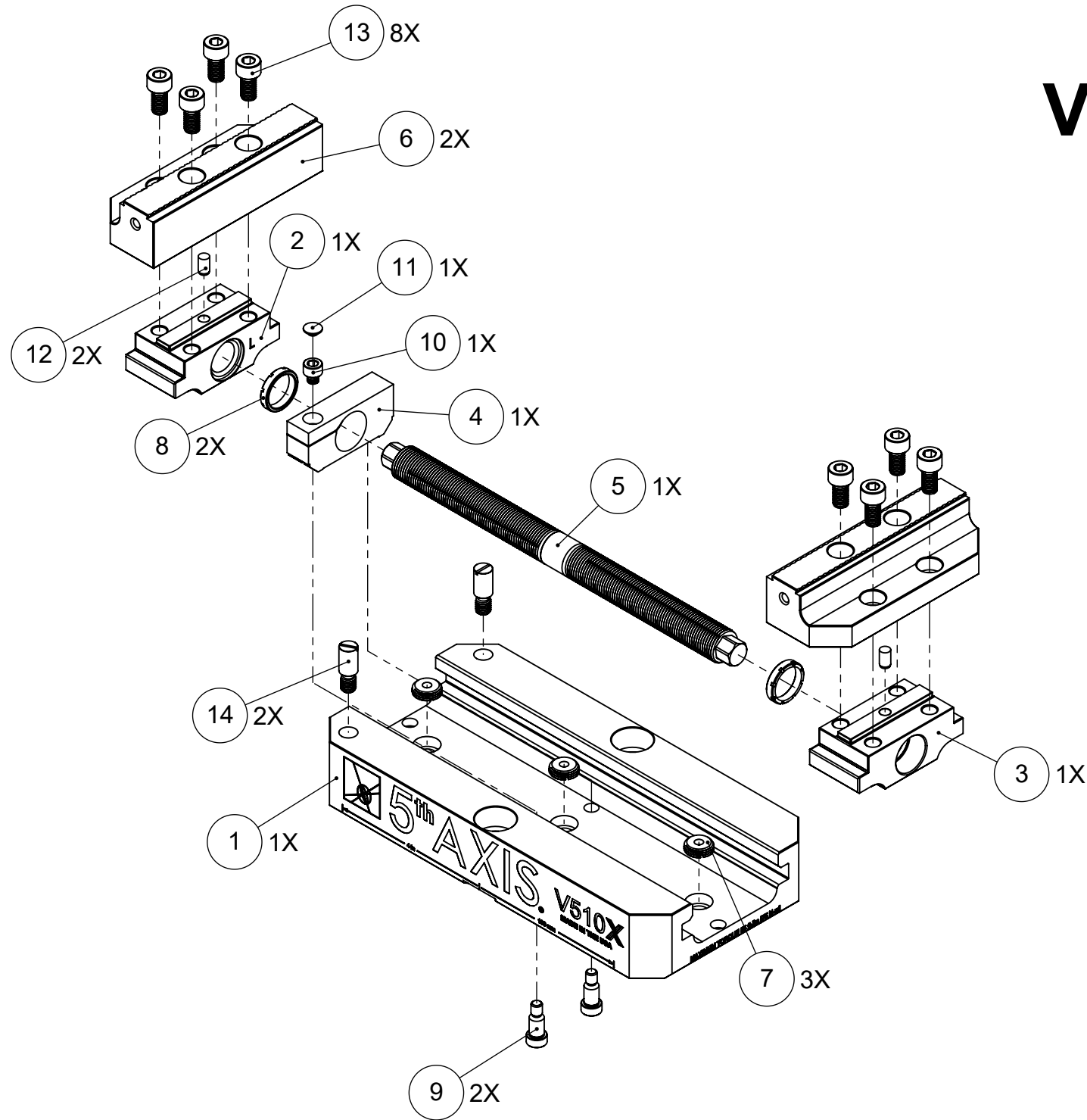
A

A



| MILLIMETER | | TOLERANCES UNLESS OTHERWISE SPECIFIED | | 5 th AXIS [®] | |
|-------------------------------------------|--|---------------------------------------|--------------|-------------------------------------------------|--------------------------|
| DRAWN IN ACCORDANCE WITH ASME Y14.5-2009 | | x ± 0.1 | .xx ± 0.01 | DESCRIPTION LARGE SELF-CENTERING VISE | |
| WWW.5THAXIS.COM | | .x ± 0.05 | .xxx ± 0.005 | | |
| 7140 ENGINEER ROAD SAN DIEGO, CA 92111 | | ANGULAR ± 0.5° | | REV A | |
| P (858) 505-0432 F (858) 505-9344 | | THIRD ANGLE PROJECTION | | SIZE B | PART NO. V510X |
| | | | | DO NOT SCALE DRAWING | SCALE 1:3 |
| | | | | WEIGHT: | SHEET 1 OF 3 |

V510X



| ITEM NO. | PART NUMBER | DESCRIPTION | QTY. |
|----------|-------------|--------------------------|------|
| 1 | V5104-1 | BASE | 1 |
| 2 | V562X-2L | LEFT TRUCK | 1 |
| 3 | V562X-2R | RIGHT TRUCK | 1 |
| 4 | V562MX-3 | CENTER BLOCK | 1 |
| 5 | V56124-4 | LEAD SCREW | 1 |
| 6 | V562X-5 | JAW | 2 |
| 7 | TIM-58 | THREADED INSERT | 3 |
| 8 | V56124-6 | CENTER BLOCK RING | 2 |
| 9 | SB5VX | SHOULDER BOLT | 2 |
| 10 | 91290A310 | SOCKET HEAD CAP SCREW | 1 |
| 11 | M6C | PLASTIC PLUG | 1 |
| 12 | M6X12.DP | DOWEL PIN, M6 X 12mm | 2 |
| 13 | 91290A418 | SOCKET HEAD CAP SCREW | 8 |
| 14 | BASE PLUG | BASE PLUG | 2 |
| 15 | ANTI-SEIZE | ANTI-SEIZE (NOT SHOWN) | 1 |
| 16 | LP10 | LOCATING PIN (NOT SHOWN) | 2 |
| 17 | TS13 | THUMB SCREW (NOT SHOWN) | 1 |

FOR REFERENCE ONLY - NOT FOR RESALE

| | | | | |
|--------------------------------------------------------------------------------------------------------------------------------------------------------------------------------------------------|------------------------------------------------------------------------------------------------------------------------------------------------------------------|-------------------------------------------------|---------------------------------|------------------------|
| MILLIMETER <small>DRAWN IN ACCORDANCE WITH ASME Y14.5-2009</small> WWW.5THAXIS.COM 7140 ENGINEER ROAD SAN DIEGO, CA 92111 P (858) 505-0432 F (858) 505-9344 | TOLERANCES <small>UNLESS OTHERWISE SPECIFIED</small> x ± 0.1 .xx ± 0.01 .x ± 0.05 .xxx ± 0.005 ANGULAR ± 0.5° THIRD ANGLE PROJECTION | | | |
| | | DESCRIPTION LARGE SELF-CENTERING VISE | | |
| | | SIZE B | PART NO. V510X | REV A |
| DO NOT SCALE DRAWING | | SCALE 1:3 | WEIGHT: | SHEET 2 OF 3 |

8

7

6

5

4

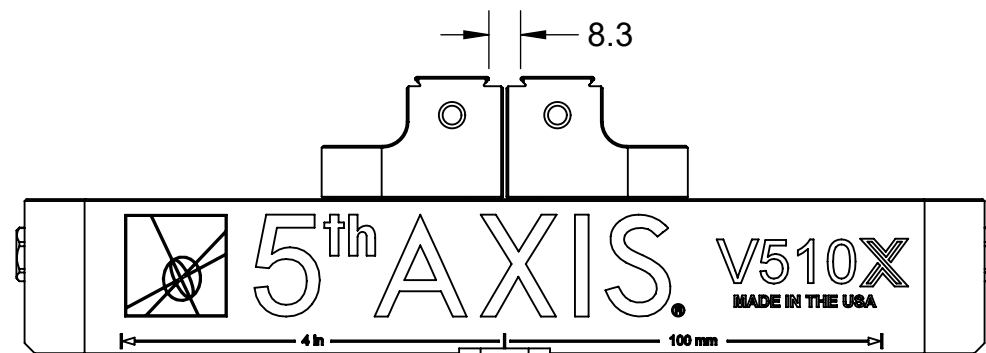
3

2

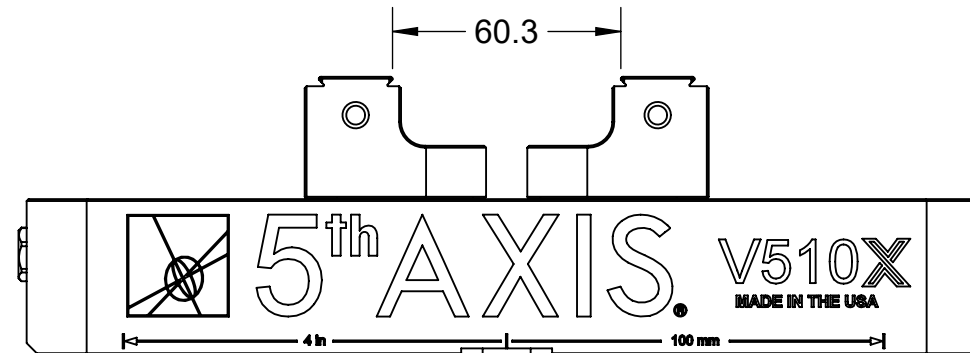
1

NOTE: USING DOVETAIL ALLOWS VISE TO CLAMP LARGER PART.
BELOW CLAMPING RANGE ONLY SHOWS THE CAPABILITY OF THE GRIPPER TEETH.

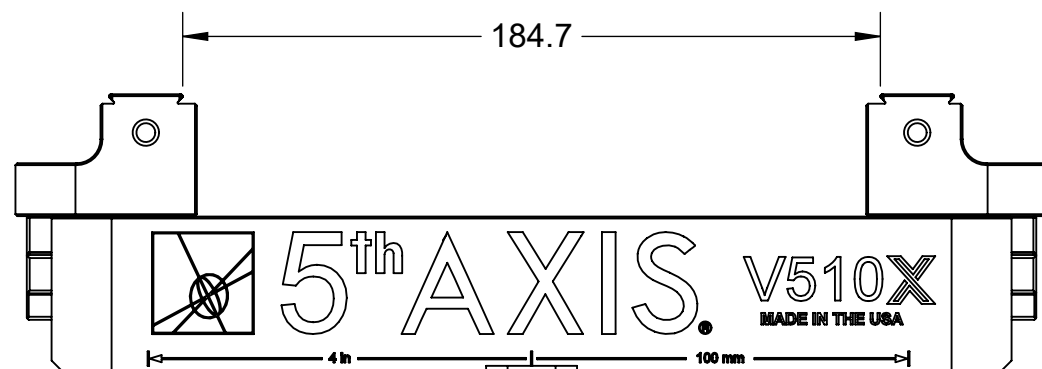
V510X



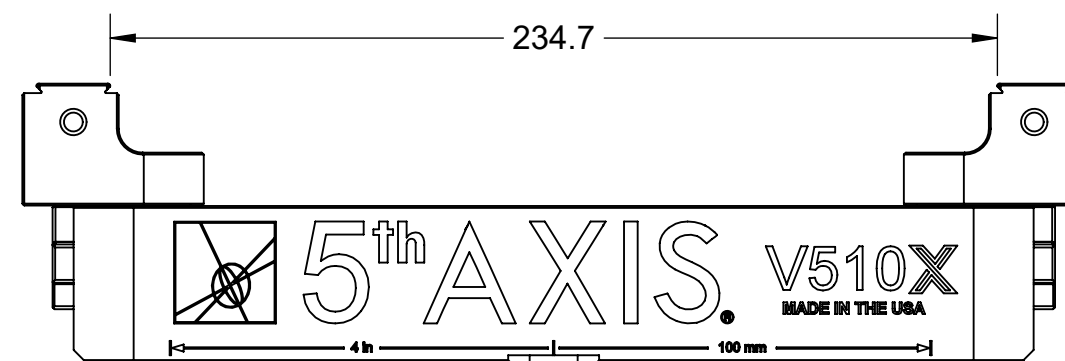
FORWARD JAWS (MINIMUM CLAMPING RANGE)



REVERSE JAWS (MINIMUM CLAMPING RANGE)



FORWARD JAWS (MAXIMUM CLAMPING RANGE)



REVERSE JAWS (MAXIMUM CLAMPING RANGE)

MILLIMETER

DRAWN IN ACCORDANCE WITH
ASME Y14.5-2009

WWW.5THAXIS.COM

7140 ENGINEER ROAD
SAN DIEGO, CA 92111

P (858) 505-0432
F (858) 505-9344

TOLERANCES

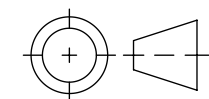
UNLESS OTHERWISE SPECIFIED

x ± 0.1 .xx ± 0.01

.x ± 0.05 .xxx ± 0.005

ANGULAR ± 0.5°

THIRD ANGLE PROJECTION



DESCRIPTION

LARGE SELF-CENTERING VISE

SIZE
B

PART NO.

V510X

REV
A

DO NOT SCALE DRAWING

SCALE 1:2

WEIGHT:

SHEET 3 OF 3

8

7

6

5

4

3

2

1