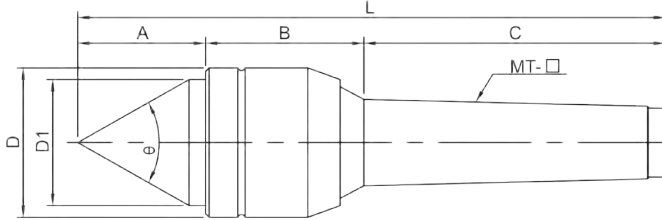


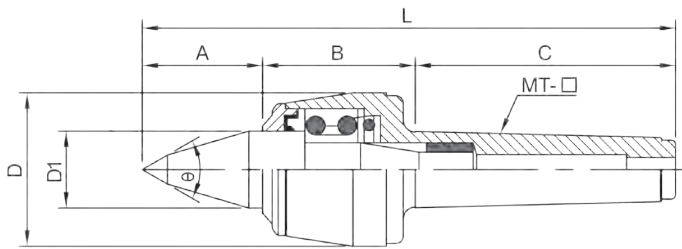
## Revolving Centres

Part No.	Size	A	B	C	D	D1	L	Accuracy (mm)	Max Speed	Nose Angle	Weight (kg)
VLC-212	MT2	28	35	69	32	23	132	0.005	4,000rpm	60°	0.3
VLC-213	MT3	36	44	86	41	35	166	0.005	3,000rpm	60°	0.9
VLC-214	MT4	41	51	108	47	40	200	0.005	2,500rpm	60°	1.5
VLC-215	MT5	54	72	136	65	52	262	0.005	2,000rpm	60°	3.8



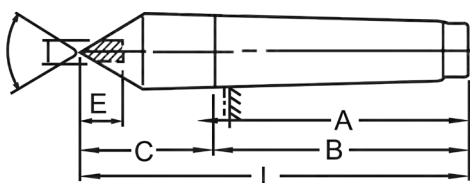
## High Speed Extended Nose Revolving Centres

Part No.	Size	A	B	C	D	D1	L	Accuracy (mm)	Max Speed	Nose Angle	Weight (kg)
VLC-MT3B	MT3	48	52	86	53	30	186	0.005	4,000rpm	60°	1.4
VLC-MT4B	MT4	52	62	108	63	32	218	0.005	3,000rpm	60°	2.2
VLC-MT5B	MT5	67	71	136	83	40	274	0.005	2,500rpm	60°	4.5



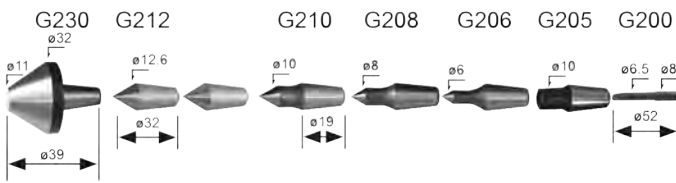
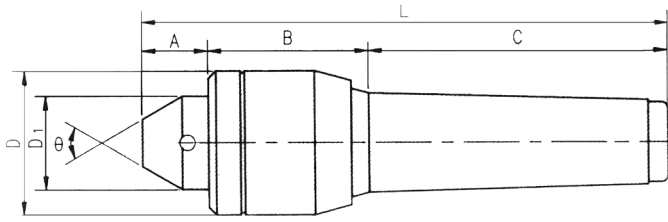
## Carbide Tipped Dead Centres

Part No	Size	A	B	C	E	L	Nose Angle	Weight (kg)
VLC-112	MT2	69	67	31	8	100	60°	0.2
VLC-113	MT3	89	81	39	10	125	60°	0.4
VLC-114	MT4	109	102.5	46	14	155	60°	0.8
VLC-115	MT5	136	129.5	64	18	200	60°	2.1



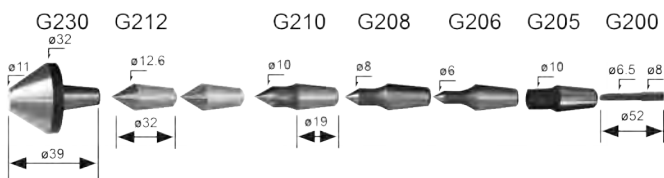
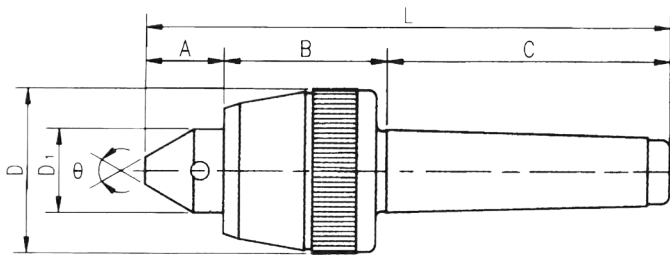
## Revolving Centre Sets

Part No.	Size	A	B	C	D	D1	L	Accuracy (mm)	Max Speed	Nose Angle	Weight (kg)
VLC-312	MT2	22	36	69	32	25	127	0.008	4,000rpm	60°	0.9
VLC-313	MT3	23	44	86	41	30	153	0.008	3,000rpm	60°	1.4
VLC-314	MT4	23	51	108	47	32	182	0.008	2,500rpm	60°	2

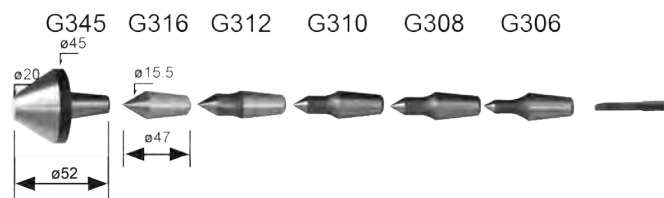


## High Speed Revolving Centre Sets

Part No.	Size	A	B	C	D	D1	L	Accuracy (mm)	Max Speed	Nose Angle	Weight (kg)
VCS-MT3	MT3	28	51	86	53	30	165	0.008	4,000rpm	60°	1.8
VCS-MT4P	MT4	30	62	108	63	32	196	0.008	3,500rpm	60°	2.7
VCS-MT5P	MT5	34	71	136	83	40	237	0.008	2,500rpm	60°	5.1



-VCS-MT3 Type



-VCS-MT4P/MT5P Type

