

testa ad angolo - angle head

TAO20.P



caratteristiche/features

ø 20 M14 1150 N

 1-1 3500

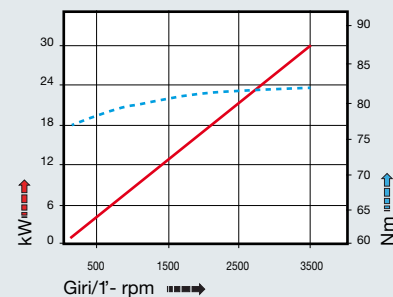
peso/weight

15 kg

rotazione/rotation

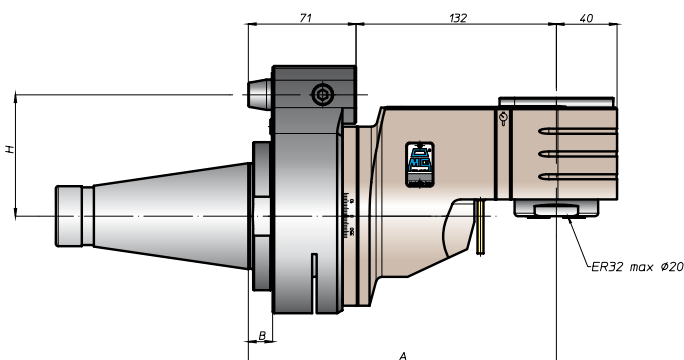
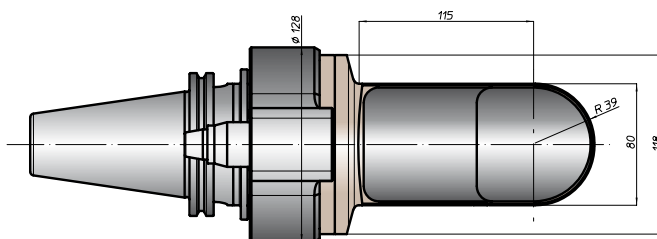
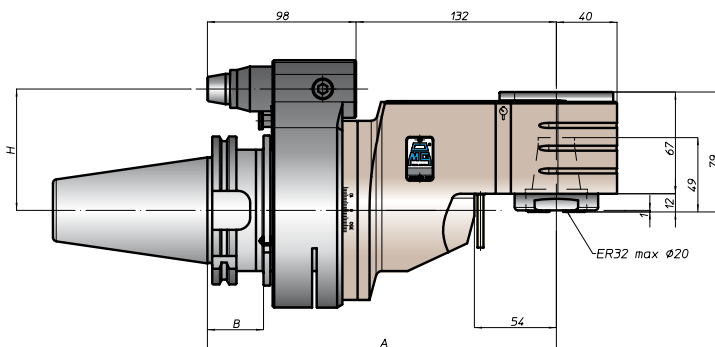
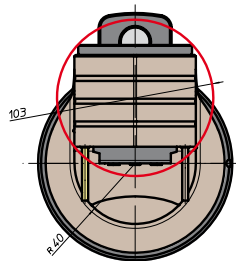
→
 input output

prestazioni/performance



tipi mandrino disponibili / available spindle types

- 2** Albero portafresa
Milling shaft
Ø22-Ø27-Ø32
- 3** Weldon
Whistle-Notch
Ø16-Ø20
- 4** DIN69893-HSK
HSK50



CONO SHANK	size	H			
		A	B	standard	optional
DIN69871 *	-	-	-	-	-
ANSIB5.50 *	45	230	35	80	110
	50			80	110
BT *	-	-	65	-	-
	50	238	45	80	110
HSK	-	-	-	-	-
	DIN69893	80	239	46	80
CAPTO	-	234	-	-	-
	ISO28623			-	80
KM	-	230	-	-	-
	80			80	110
DIN2080	-	203	16	-	-
	50			80	110
ANSIB5.18	-	203	16	-	-
	50			80	110

* Option: Dual Contact

