

# TA16.PL



caratteristiche/features



peso/weight



15,5 kg

rotazione/rotation

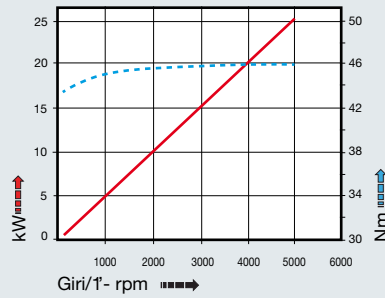


input



output

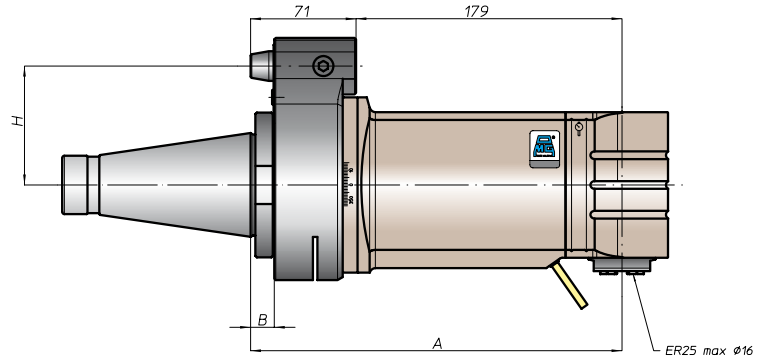
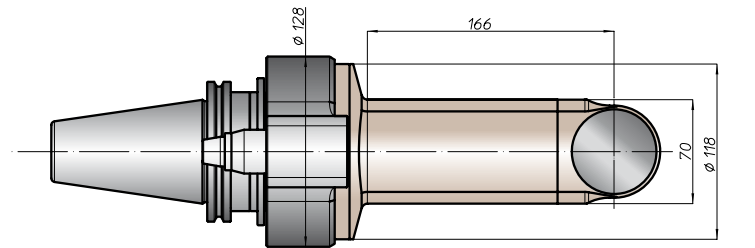
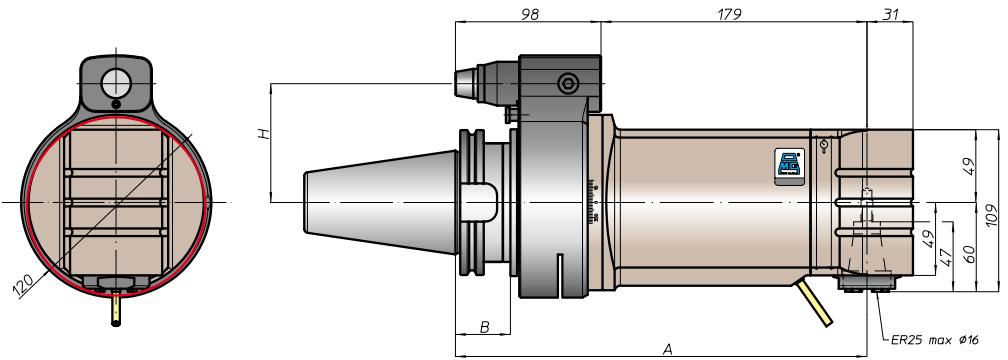
prestazioni/performance



CONO SHANK	size	A	B	H	
				standard	optional
* DIN69871 *	-	-	-	-	-
	45	277	35	80	110
* ANSIB5.50 * CAT	-	-	-	-	-
	50	277	-	80	110
* BT	-	-	-	-	-
	50	285	45	80	110
HSK DIN69893	-	-	-	-	-
	80	286	46	80	110
CAPTO ISO26623	-	-	-	-	-
	C6	281	39	80	110
KM	-	-	-	-	-
	80	277	-	80	110
DIN2080	-	-	-	-	-
	50	250	16	80	110
ANSIB5.18 NMTB	-	-	-	-	-
	50	250	16	80	110

tipi mandrino disponibili / available spindle types

- 1 DIN6388-ER  
**ER32**
- 2 Albero portafresa  
Milling shaft  
**Ø16-Ø22-Ø27-Ø32**
- 3 Weldon  
Whistle-Notch  
**Ø20**
- 4 DIN69893-HSK  
**HSK32**
- 5 COROMANT  
CAPTO®  
**C3**
- 6 ABS  
Licenza KOMET®  
**ABS32**



\* Option: Dual Contact

