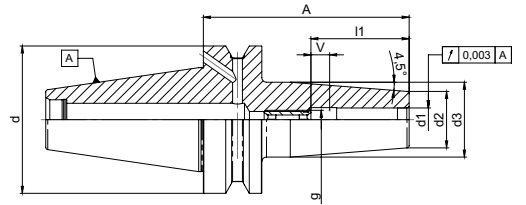


Shrink Fit Toolholders

BT MAS 403

- BT30 Balanced to 20,000rpm @ G2.5
- BT40 Balanced to 18,000rpm @ G2.5



	Part Number	d1	d2	d3	l1	A	V	g
30	72.150.500.010 *	3	15	25	20	80	5	M6
	72.150.500.040 *	4	15	25	20	80	5	M6
	72.150.500.070 *	5	15	25	25	80	5	M6
	72.150.500.100	6	21	31	36	80	10	M5
	72.150.500.200	8	21	31	36	80	10	M6
	72.150.500.300	10	24	34	41	80	10	M8x1
	72.150.500.400	12	24	34	46	80	10	M10x1
72.150.500.500	16	27	37	49	80	10	M12x1	
40	72.160.500.010 *	3	15	20	20	90	5	M6
	72.160.500.040 *	4	15	20	20	90	5	M6
	72.160.500.070 *	5	15	20	25	90	5	M6
	72.161.500.040	6	21	27	36	90	10	M5
	72.161.500.100	6	21	27	36	90	10	M5
	72.161.500.110	6	21	27	36	90	10	M5
	72.161.500.160	6	21	32	36	160	10	M5
	72.161.500.200	8	21	27	36	90	10	M6
	72.161.500.260	8	21	32	36	160	10	M6
	72.161.500.300	10	24	32	42	90	10	M8x1
	72.161.500.360	10	24	34	42	160	10	M8x1
	72.161.500.400	12	24	32	47	90	10	M10x1
	72.161.500.460	12	24	34	47	160	10	M8x1
	72.161.500.470	14	27	34	47	90	10	M10x1
	72.161.500.480	14	27	42	47	160	10	M10x1
	72.161.500.500	16	27	34	50	90	10	M12x1
	72.161.500.560	16	27	42	50	160	10	M12x1
	72.161.500.570	18	33	42	50	90	10	M12
	72.161.500.580	18	33	51	50	160	10	M12x1
	72.161.500.600	20	33	42	52	90	10	M16x1
	72.161.500.660	20	33	51	52	160	10	M16x1
	72.161.500.700	25	44	53	58	100	10	M16x1
	72.161.500.760	25	44	53	58	160	10	M16x1

* - Not suitable for HSS drills



DIN 69871/SK Form

- Balanced to 18,000rpm @ G2.5

	Part Number	d1	d2	d3	l1	A	V	g
40	72.060.500.010 *	3	15	20	20	80	5	M6
	72.060.500.040 *	4	15	20	20	80	5	M6
	72.060.500.070 *	5	15	20	25	80	5	M6
	72.060.500.100	6	21	27	36	80	10	M5
	72.060.500.150	6	21	27	36	120	10	M5
	72.060.500.160	6	21	32	36	160	10	M5
	72.060.500.200	8	21	27	36	80	10	M6
	72.060.500.250	8	21	27	36	120	10	M6
	72.060.500.260	8	21	32	36	160	10	M6
	72.060.500.300	10	24	32	42	80	10	M8x1
	72.060.500.350	10	24	32	42	120	10	M8x1
	72.060.500.360	10	24	34	42	160	10	M8x1
	72.060.500.400	12	24	32	47	80	10	M10x1
	72.060.500.450	12	24	32	47	120	10	M10x1
	72.060.500.460	12	24	34	47	160	10	M10x1
	72.060.500.470	14	27	34	47	80	10	M10x1
	72.060.500.475	14	27	34	47	120	10	M10x1
	72.060.500.480	14	27	42	47	160	10	M10x1
	72.060.500.500	16	27	34	50	80	10	M12x1
	72.060.500.550	16	27	34	50	120	10	M12x1
	72.060.500.560	16	27	42	50	160	10	M12x1
	72.060.500.570	18	33	42	50	80	10	M12x1
	72.060.500.575	18	33	42	50	120	10	M12x1
	72.060.500.580	18	33	50	50	160	10	M12x1
	72.060.500.600	20	33	42	52	80	10	M16x1
	72.060.500.650	20	33	42	52	120	10	M16x1
72.060.500.660	20	33	50	52	160	10	M16x1	
72.060.500.700	25	44	50	58	100	10	M16x1	
72.060.500.800	32	44	50	62	100	10	M16x1	

* - Not suitable for HSS drills

